

Blom Hill Farm.

90-1-16. Large tract off 692

below Godwin Drive + across from
Foster.

151.2194 A.

Milton C. Forster Estate

WB. 41 p. 16

10820 Lucasville Rd.

prev

1/2 Wm R Stephens

land use

9255 Lee Ave.

631-2107.

Man. Va. 22110

130 acres

342,300 land

DB. 107 P. 388

41,800 Bldgs.

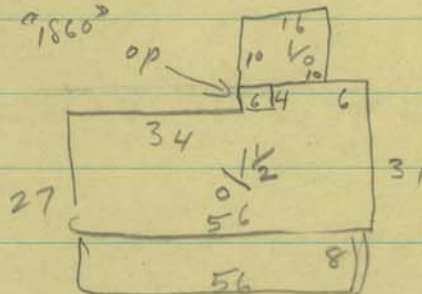
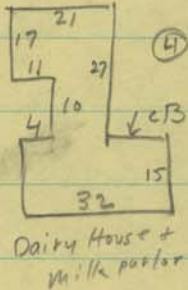
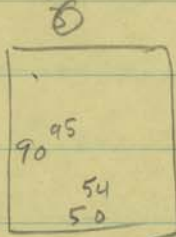
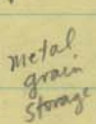
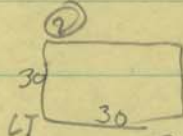
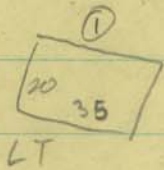
prev. owner. Milton C. + Ruth A. Forster

10816 Lucasville Rd.

wood fr. w/wood sid. plaster walk.
comp. sh. roof. 7 rooms 4 BR,
no basem 1 Bath
4 FP.

In 1977 to M.C.F. estate

or 9 rooms.



1. Lean to. 20x35
2. L " " 30x30
- 3 Barn 90x50
- 4 Dairy House 21x17 irr
5. grain stor.

Lean-to

also a brick ramblers.

"1945" 1/2 B. 25x29. 4 rooms.

1,418.

Taxes.

1979.

Bloom Hill.

10 Nov. 1941

DB. 107 p. 388

Virginia E. Conner + J. K. Conner to
Milton C. Forster + Ruth Arington Forster
and R.C. Printz + Mamie F. Printz
pt. 3d. pt.

130 acres. adj. lands of W. H. Gamie
Harvey Simpson + Buck Brown + others
and being the same. con. to Va. E. Conner
by deed 7 July 1927, from Fedl. Land
Bank Balto. B. 84 p. 177

DB. 84 p. 177. Bank to Va. Conner,
and being same. con. to Bank by deed
from Robt A. Hutchinson, sp. comm.,
13 Apr. 1927. DB 83 p. 182-83
being the same land con.

to Jacob K. Conner from J.S.T. Brawner et al.
17 Oct 1919. DB 73 p. 241.

and being the same land of which J.J. Cockrell
died seized + possessed.

DB. 73 p. 241

J. S. T. Brawner, Chas Brawner, Grace C. Vogt
(living separate from her husb. Wm Vogt),
Elyzina E. Vollmer, Frederick Vollmer,
Margaret W. Griffith + W^m K. Griffith;
Charlie Lloyd + Lee C. Lloyd;
John H. Nelson admin. Edwin Nelson
Trustee and Jacob K. Corna.

↓
4 child's of. Chas. E. + J. S. T. Brawner.