

DRAFT



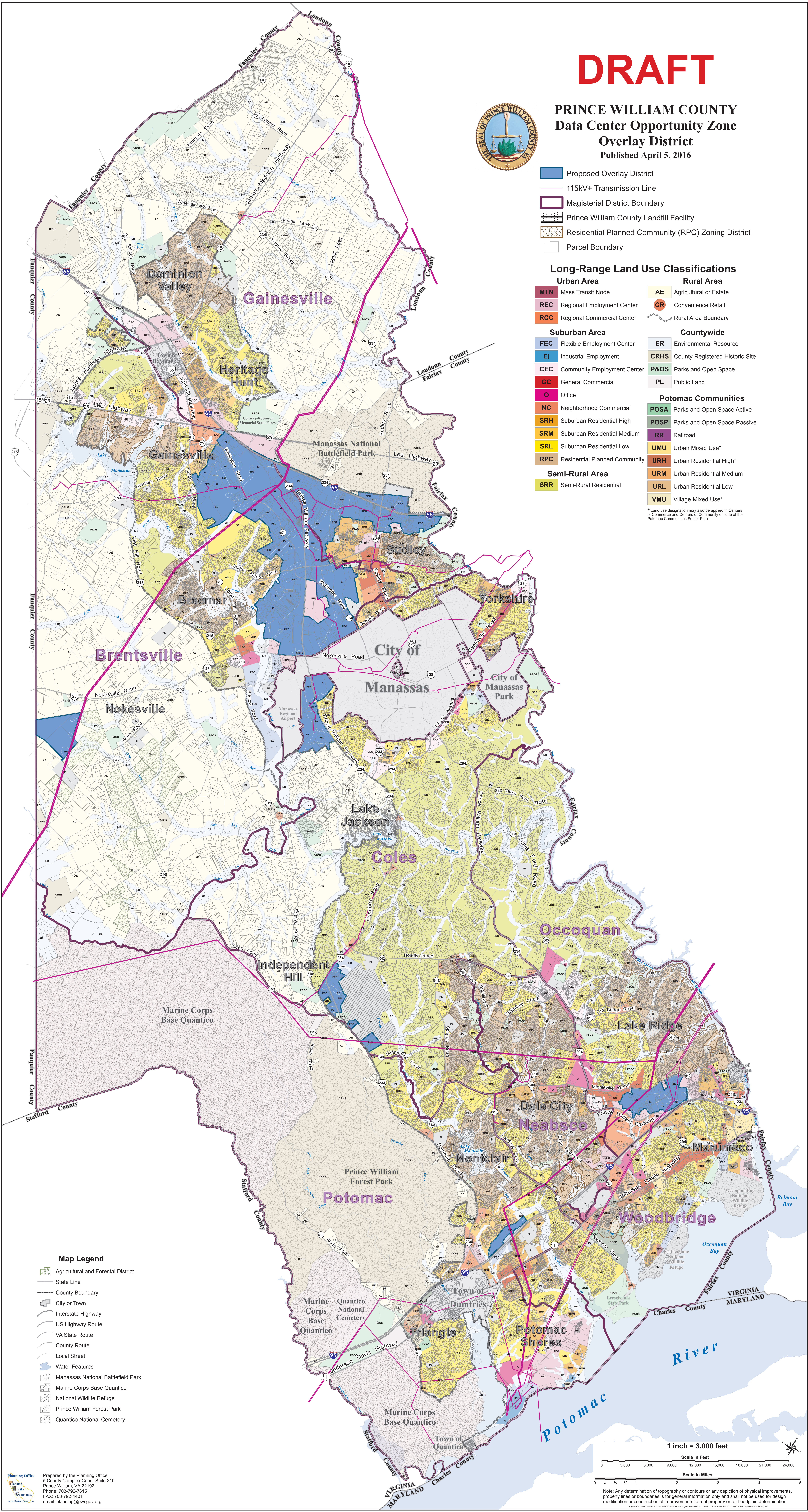
PRINCE WILLIAM COUNTY Data Center Opportunity Zone Overlay District Published April 5, 2016

- Proposed Overlay District
- 115kV+ Transmission Line
- Magisterial District Boundary
- Prince William County Landfill Facility
- Residential Planned Community (RPC) Zoning District
- Parcel Boundary

Long-Range Land Use Classifications

- | Urban Area | | Rural Area | |
|------------|----------------------------|------------|------------------------|
| MTN | Mass Transit Node | AE | Agricultural or Estate |
| REC | Regional Employment Center | CR | Convenience Retail |
| RCC | Regional Commercial Center | | Rural Area Boundary |
- | Suburban Area | | Countywide | |
|---------------|-------------------------------|------------|---------------------------------|
| FEC | Flexible Employment Center | ER | Environmental Resource |
| EI | Industrial Employment | CRHS | County Registered Historic Site |
| CEC | Community Employment Center | P&OS | Parks and Open Space |
| GC | General Commercial | PL | Public Land |
| O | Office | | |
| NC | Neighborhood Commercial | | |
| SRH | Suburban Residential High | | |
| SRM | Suburban Residential Medium | | |
| SRL | Suburban Residential Low | | |
| RPC | Residential Planned Community | | |
- | Semi-Rural Area | | Potomac Communities | |
|-----------------|------------------------|---------------------|------------------------------|
| SRR | Semi-Rural Residential | POSA | Parks and Open Space Active |
| | | POSP | Parks and Open Space Passive |
| | | RR | Railroad |
| | | UMU | Urban Mixed Use* |
| | | URH | Urban Residential High* |
| | | URM | Urban Residential Medium* |
| | | URL | Urban Residential Low* |
| | | VMU | Village Mixed Use* |

* Land use designation may also be applied in Centers of Commerce and Centers of Community outside of the Potomac Communities Sector Plan



Map Legend

- Agricultural and Forestal District
- State Line
- County Boundary
- City or Town
- Interstate Highway
- US Highway Route
- VA State Route
- County Route
- Local Street
- Water Features
- Manassas National Battlefield Park
- Marine Corps Base Quantico
- National Wildlife Refuge
- Prince William Forest Park
- Quantico National Cemetery

1 inch = 3,000 feet

