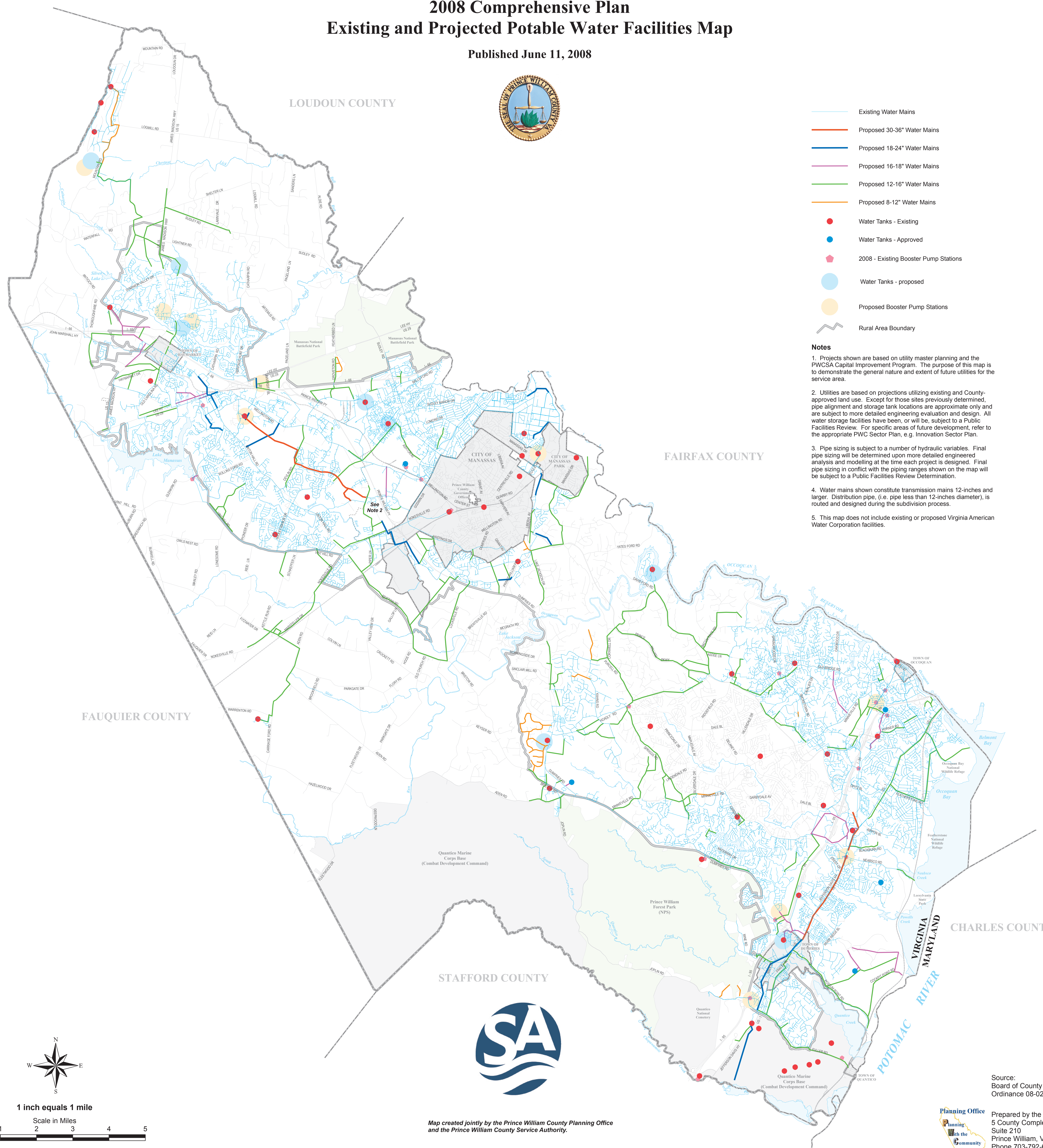


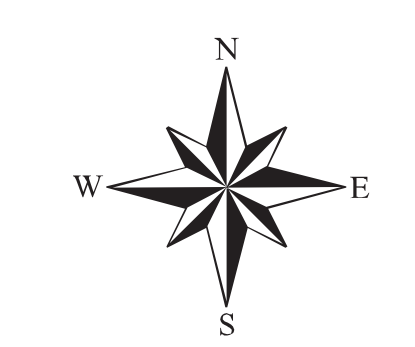
# PRINCE WILLIAM COUNTY 2008 Comprehensive Plan Existing and Projected Potable Water Facilities Map

Published June 11, 2008

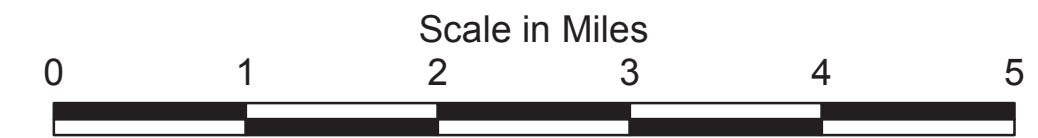


- Existing Water Mains
- Proposed 30-36" Water Mains
- Proposed 18-24" Water Mains
- Proposed 16-18" Water Mains
- Proposed 12-16" Water Mains
- Proposed 8-12" Water Mains
- Water Tanks - Existing
- Water Tanks - Approved
- 2008 - Existing Booster Pump Stations
- Water Tanks - proposed
- Proposed Booster Pump Stations
- Rural Area Boundary

- Notes**
1. Projects shown are based on utility master planning and the PWCSA Capital Improvement Program. The purpose of this map is to demonstrate the general nature and extent of future utilities for the service area.
  2. Utilities are based on projections utilizing existing and County-approved land use. Except for those sites previously determined, pipe alignment and storage tank locations are approximate only and are subject to more detailed engineering evaluation and design. All water storage facilities have been, or will be, subject to a Public Facilities Review. For specific areas of future development, refer to the appropriate PWC Sector Plan, e.g. Innovation Sector Plan.
  3. Pipe sizing is subject to a number of hydraulic variables. Final pipe sizing will be determined upon more detailed engineering analysis and modeling at the time each project is designed. Final pipe sizing in conflict with the piping ranges shown on the map will be subject to a Public Facilities Review Determination.
  4. Water mains shown constitute transmission mains 12-inches and larger. Distribution pipe, (i.e. pipe less than 12-inches diameter), is routed and designed during the subdivision process.
  5. This map does not include existing or proposed Virginia American Water Corporation facilities.



1 inch equals 1 mile



Map created jointly by the Prince William County Planning Office  
and the Prince William County Service Authority.

Source:  
Board of County Supervisors  
Ordinance 08-021

**Planning Office**  
Prepared by the Planning Office (rfh/jbm)  
5 County Complex Court  
Suite 210  
Prince William, VA 22192  
Phone 703-792-6830  
FAX 703-792-4401

Note: This map cannot be interpreted separately from the Comprehensive Plan text.