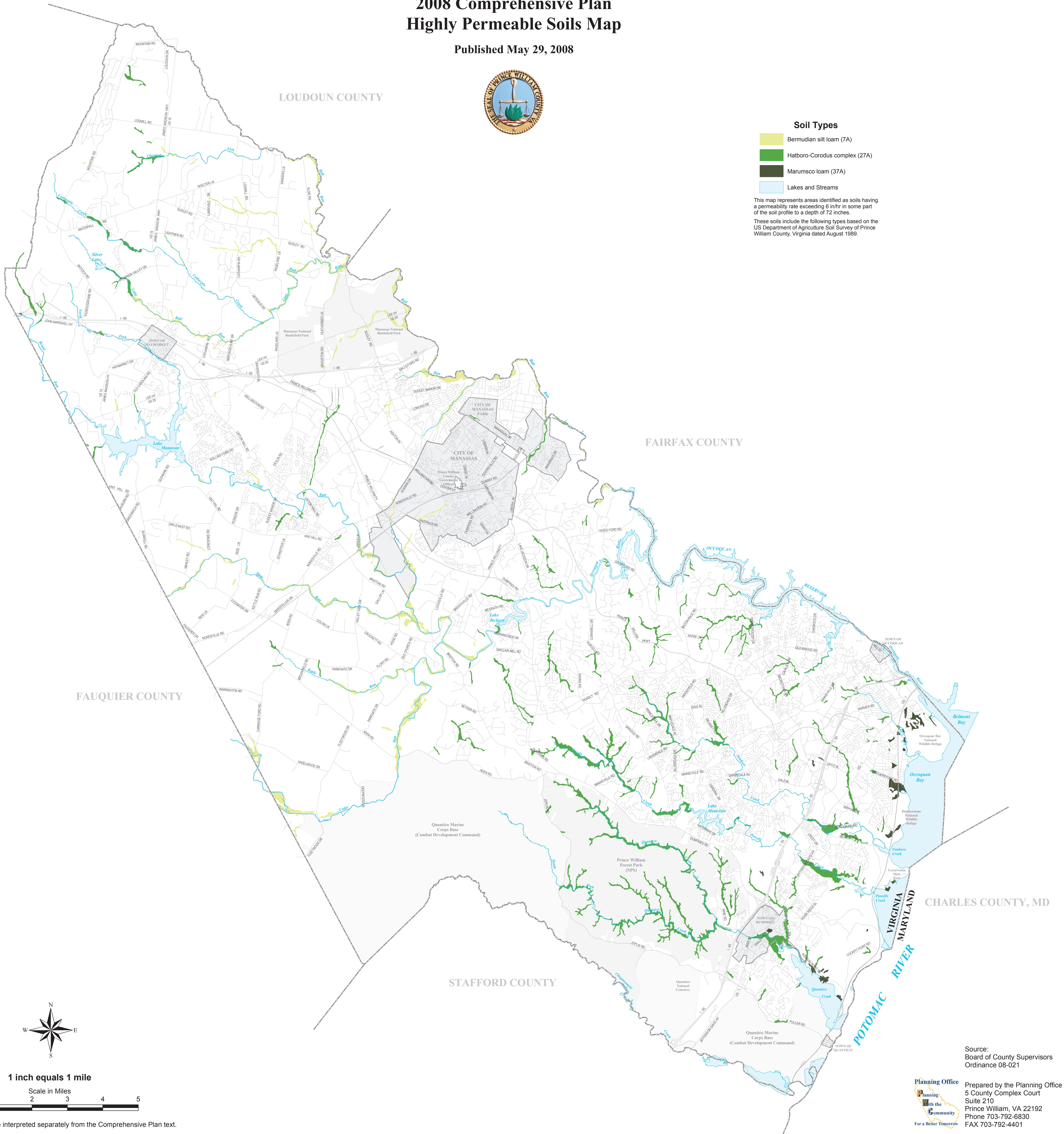


PRINCE WILLIAM COUNTY 2008 Comprehensive Plan Highly Permeable Soils Map

Published May 29, 2008

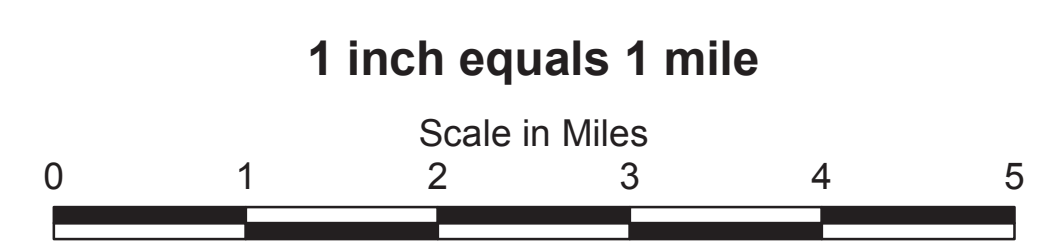
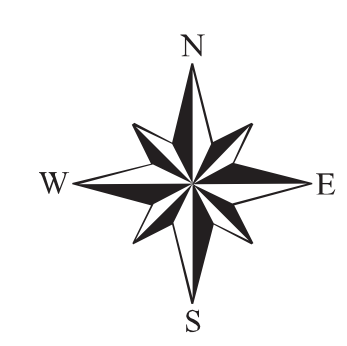


Soil Types

- Bermudian silt loam (7A)
- Hatboro-Cordus complex (27A)
- Marumco loam (37A)
- Lakes and Streams

This map represents areas identified as soils having a permeability rate exceeding 6 in/hr in some part of the soil profile to a depth of 72 inches.

These soils include the following types based on the US Department of Agriculture Soil Survey of Prince William County, Virginia dated August 1989.



Note: This map cannot be interpreted separately from the Comprehensive Plan text.

Source:
Board of County Supervisors
Ordinance 08-021

Planning Office
Prepared by the Planning Office (rfh/jbm)
5 County Complex Court
Suite 210
Prince William, VA 22192
Phone 703-792-6830
FAX 703-792-4401