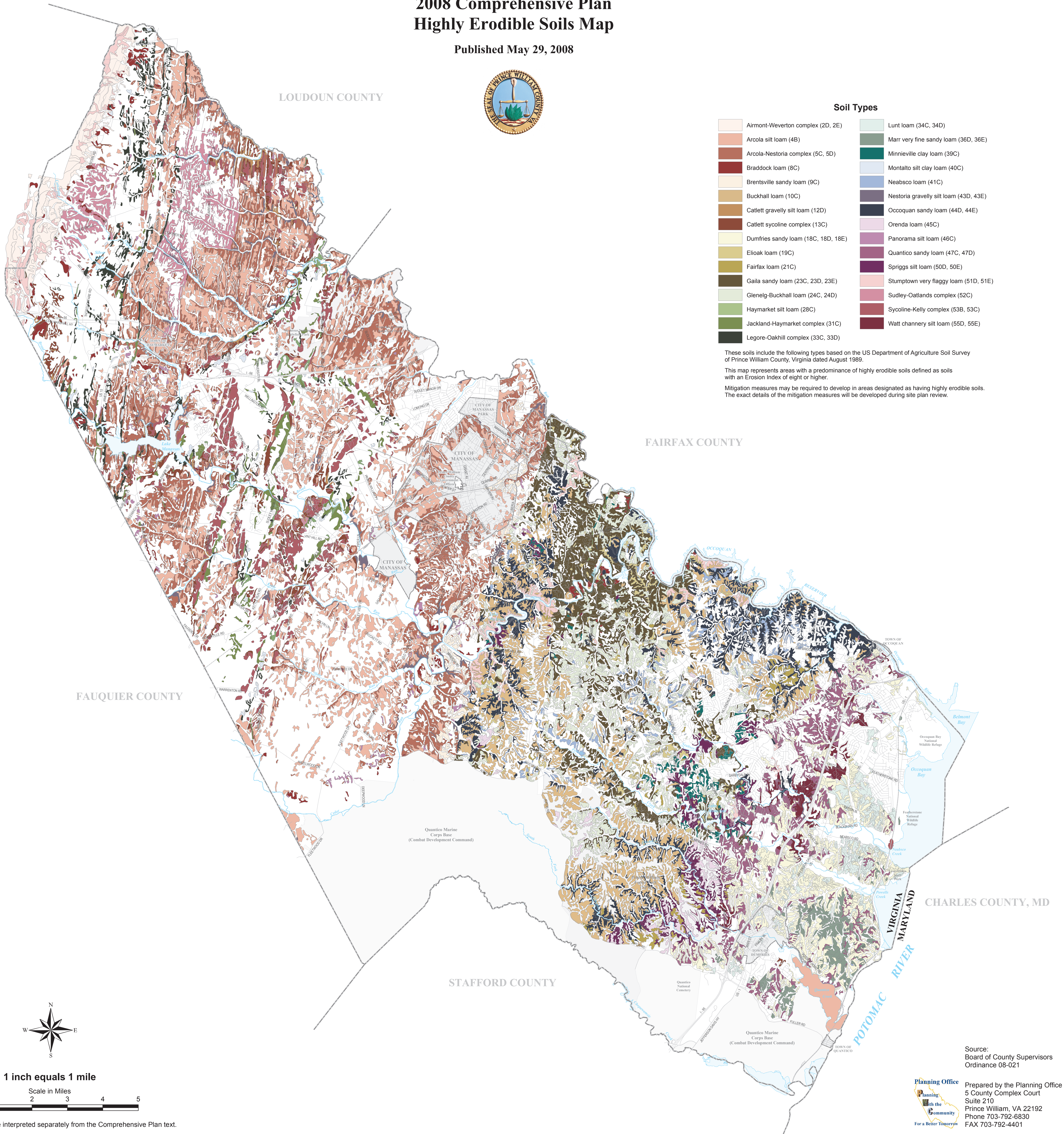


PRINCE WILLIAM COUNTY 2008 Comprehensive Plan Highly Erodible Soils Map

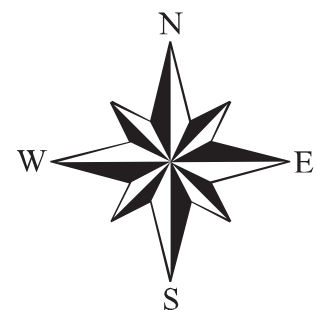
Published May 29, 2008



Soil Types

Airmont-Weverton complex (2D, 2E)	Lunt loam (34C, 34D)
Arcola silt loam (4B)	Marr very fine sandy loam (36D, 36E)
Arcola-Nestoria complex (5C, 5D)	Minnieville clay loam (39C)
Braddock loam (8C)	Montalto silt clay loam (40C)
Brentsville sandy loam (9C)	Neabco loam (41C)
Buckhall loam (10C)	Nestoria gravelly silt loam (43D, 43E)
Catlett gravelly silt loam (12D)	Occoquan sandy loam (44D, 44E)
Catlett sycoline complex (13C)	Orenda loam (45C)
Dumfries sandy loam (18C, 18D, 18E)	Panorama silt loam (46C)
Eloak loam (19C)	Quantico sandy loam (47C, 47D)
Fairfax loam (21C)	Spriggs silt loam (50D, 50E)
Gaila sandy loam (23C, 23D, 23E)	Stumptown very flaggy loam (51D, 51E)
Glenelg-Buckhall loam (24C, 24D)	Sudley-Oatlands complex (52C)
Haymarket silt loam (28C)	Sycoline-Kelly complex (53B, 53C)
Jackland-Haymarket complex (31C)	Watt channery silt loam (55D, 55E)
Legore-Oakhill complex (33C, 33D)	

These soils include the following types based on the US Department of Agriculture Soil Survey of Prince William County, Virginia dated August 1989.
This map represents areas with a predominance of highly erodible soils defined as soils with an Erosion Index of eight or higher.
Mitigation measures may be required to develop in areas designated as having highly erodible soils. The exact details of the mitigation measures will be developed during site plan review.



1 inch equals 1 mile



Note: This map cannot be interpreted separately from the Comprehensive Plan text.

Source:
Board of County Supervisors
Ordinance 08-021



Prepared by the Planning Office (rhw/jbm)
5 County Complex Court
Suite 210
Prince William, VA 22192
Phone 703-792-6830
FAX 703-792-4401