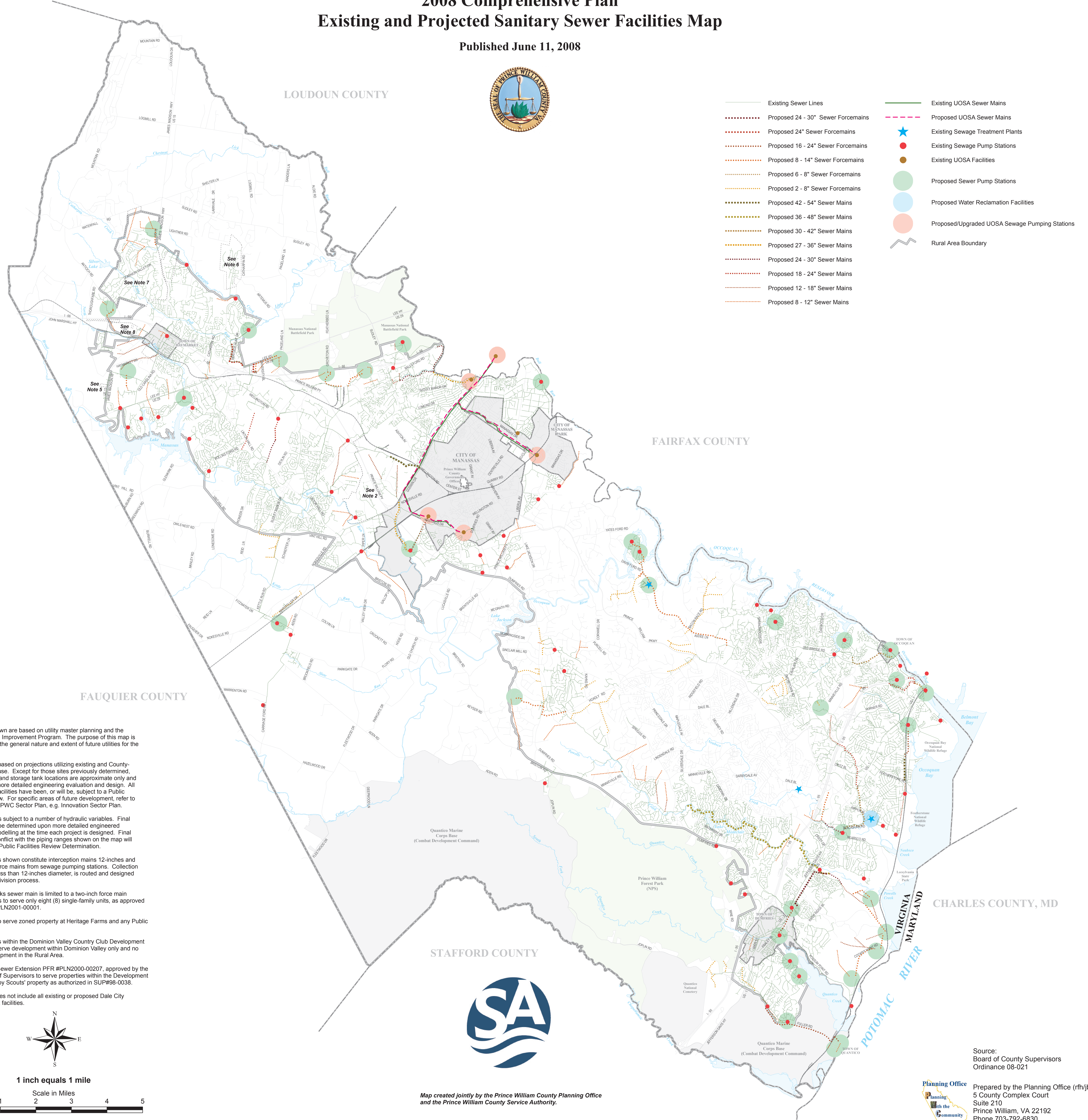


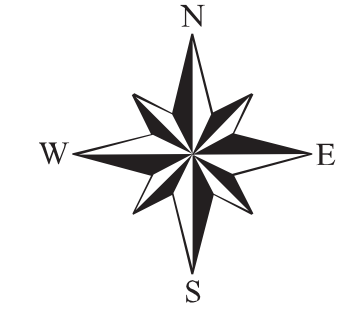
PRINCE WILLIAM COUNTY 2008 Comprehensive Plan Existing and Projected Sanitary Sewer Facilities Map

Published June 11, 2008

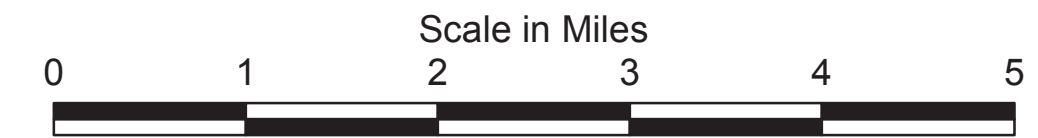


- Existing Sewer Lines
- Proposed 24 - 30" Sewer Forcemains
- Proposed 24" Sewer Forcemains
- Proposed 16 - 24" Sewer Forcemains
- Proposed 8 - 14" Sewer Forcemains
- Proposed 6 - 8" Sewer Forcemains
- Proposed 2 - 8" Sewer Forcemains
- Proposed 42 - 54" Sewer Mains
- Proposed 36 - 48" Sewer Mains
- Proposed 30 - 42" Sewer Mains
- Proposed 27 - 36" Sewer Mains
- Proposed 24 - 30" Sewer Mains
- Proposed 18 - 24" Sewer Mains
- Proposed 12 - 18" Sewer Mains
- Proposed 8 - 12" Sewer Mains
- Existing UOSA Sewer Mains
- Proposed UOSA Sewer Mains
- Existing Sewage Treatment Plants
- Existing Sewage Pump Stations
- Existing UOSA Facilities
- Proposed Sewer Pump Stations
- Proposed Water Reclamation Facilities
- Proposed/Upgraded UOSA Sewage Pumping Stations
- Rural Area Boundary

- Notes**
1. Projects shown are based on utility master planning and the PWCSA Capital Improvement Program. The purpose of this map is to demonstrate the general nature and extent of future utilities for the service area.
 2. Utilities are based on projections utilizing existing and County-approved land use. Except for those sites previously determined, pipe alignment and storage tank locations are approximate only and are subject to more detailed engineering evaluation and design. All water storage facilities have been, or will be, subject to a Public Facilities Review. For specific areas of future development, refer to the appropriate PWC Sector Plan, e.g. Innovation Sector Plan.
 3. Pipe sizing is subject to a number of hydraulic variables. Final pipe sizing will be determined upon more detailed engineering analysis and modeling at the time each project is designed. Final pipe sizing in conflict with the piping ranges shown on the map will be subject to a Public Facilities Review Determination.
 4. Sewer mains shown constitute interception mains 12-inches and larger and all force mains from sewage pumping stations. Collection pipe, i.e. pipe less than 12-inches diameter, is routed and designed during the subdivision process.
 5. Gateway Oaks sewer main is limited to a two-inch force main extension and is to serve only eight (8) single-family units, as approved per rezoning #PLN2001-00001.
 6. Sewer line to serve zoned property at Heritage Farms and any Public Facility.
 7. Sewer mains within the Dominion Valley Country Club Development Project are to serve development within Dominion Valley only and no adjacent development in the Rural Area.
 8. North Fork Sewer Extension PFR #PLN2000-00207, approved by the County Board of Supervisors to serve properties within the Development Area and the Boy Scouts' property as authorized in SUP#98-0038.
 9. This map does not include all existing or proposed Dale City Sanitary District facilities.



1 inch equals 1 mile



Map created jointly by the Prince William County Planning Office and the Prince William County Service Authority.

Source:
Board of County Supervisors
Ordinance 08-021

Planning Office
Prepared by the Planning Office (rfh/jbm)
5 County Complex Court
Suite 210
Prince William, VA 22192
Phone 703-792-6830
FAX 703-792-4401

Note: This map cannot be interpreted separately from the Comprehensive Plan text.