



Special Use Permit

SUP2020-00001 Ashland Square Parcel B – Motor Vehicle Repair

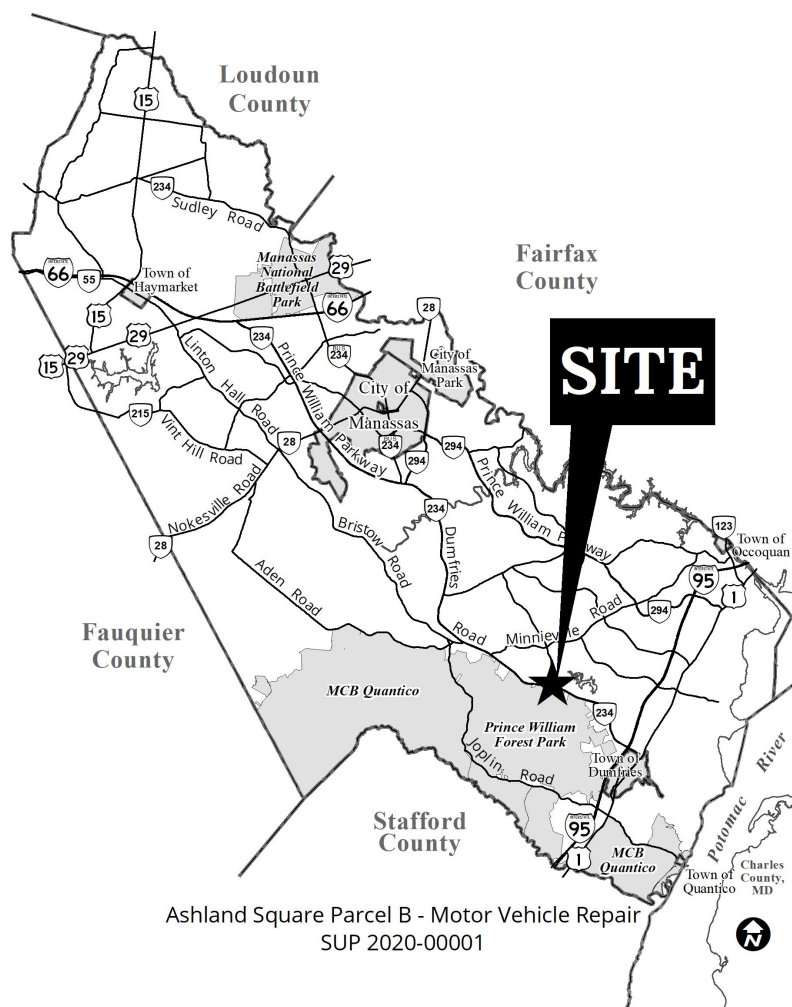
The staff report for this case is currently unavailable

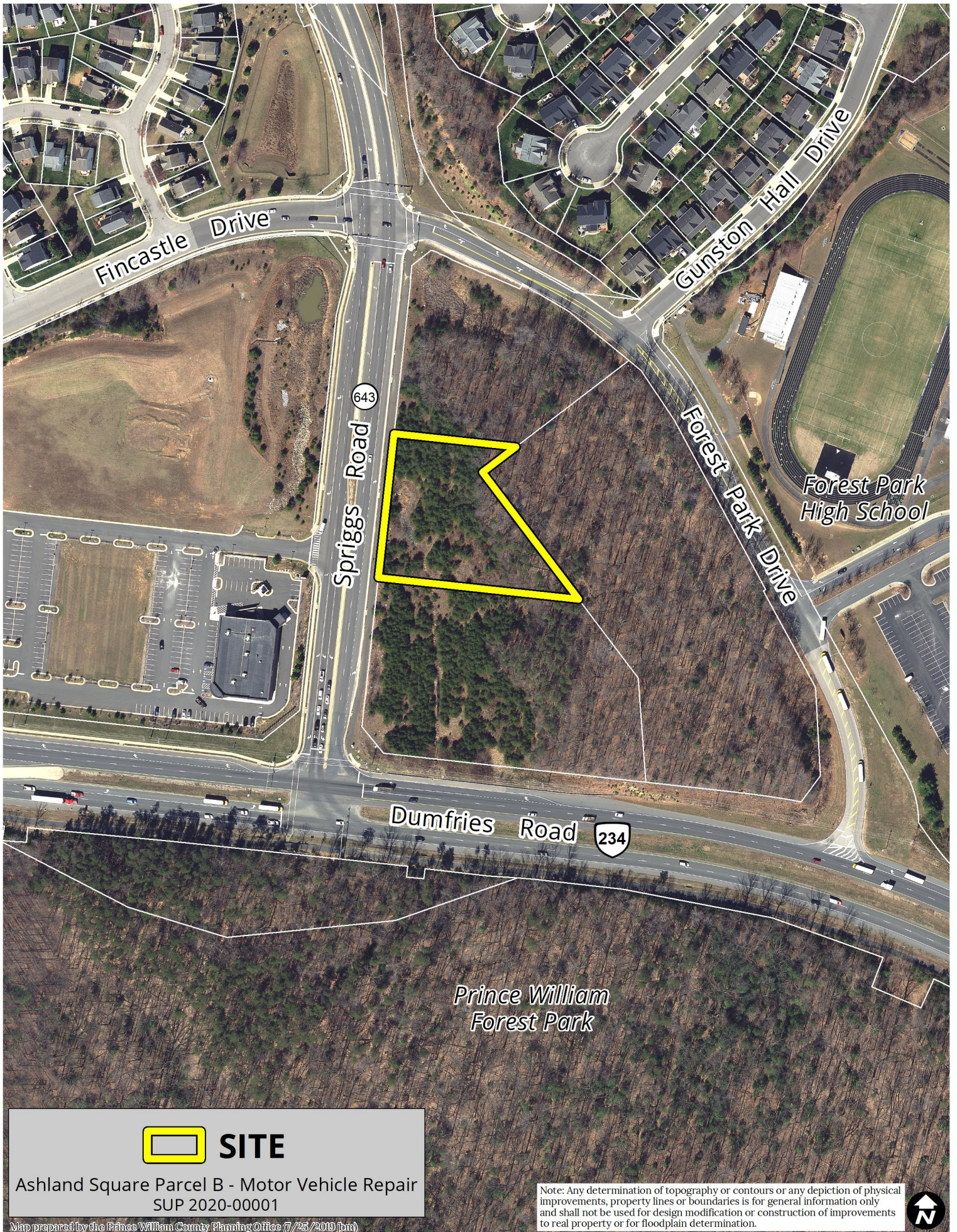
Staff reports for [Planning Commission](#) hearings are available on the Wednesday before the scheduled hearing date.

Staff reports for the [Board of County Supervisors](#) hearings are available on the Friday before the scheduled hearing date.

Please follow the link to [ePortal](#) for more information about the case.

For more information call the Planning Office at 703-792-7615 or email planning@pwcgov.org.





SITE

Ashland Square Parcel B - Motor Vehicle Repair
SUP 2020-00001

Map prepared by the Prince William County Planning Office (7/25/2019 jbm)

Note: Any determination of topography or contours or any depiction of physical improvements, property lines or boundaries is for general information only and shall not be used for design modification or construction of improvements to real property or for floodplain determination.

