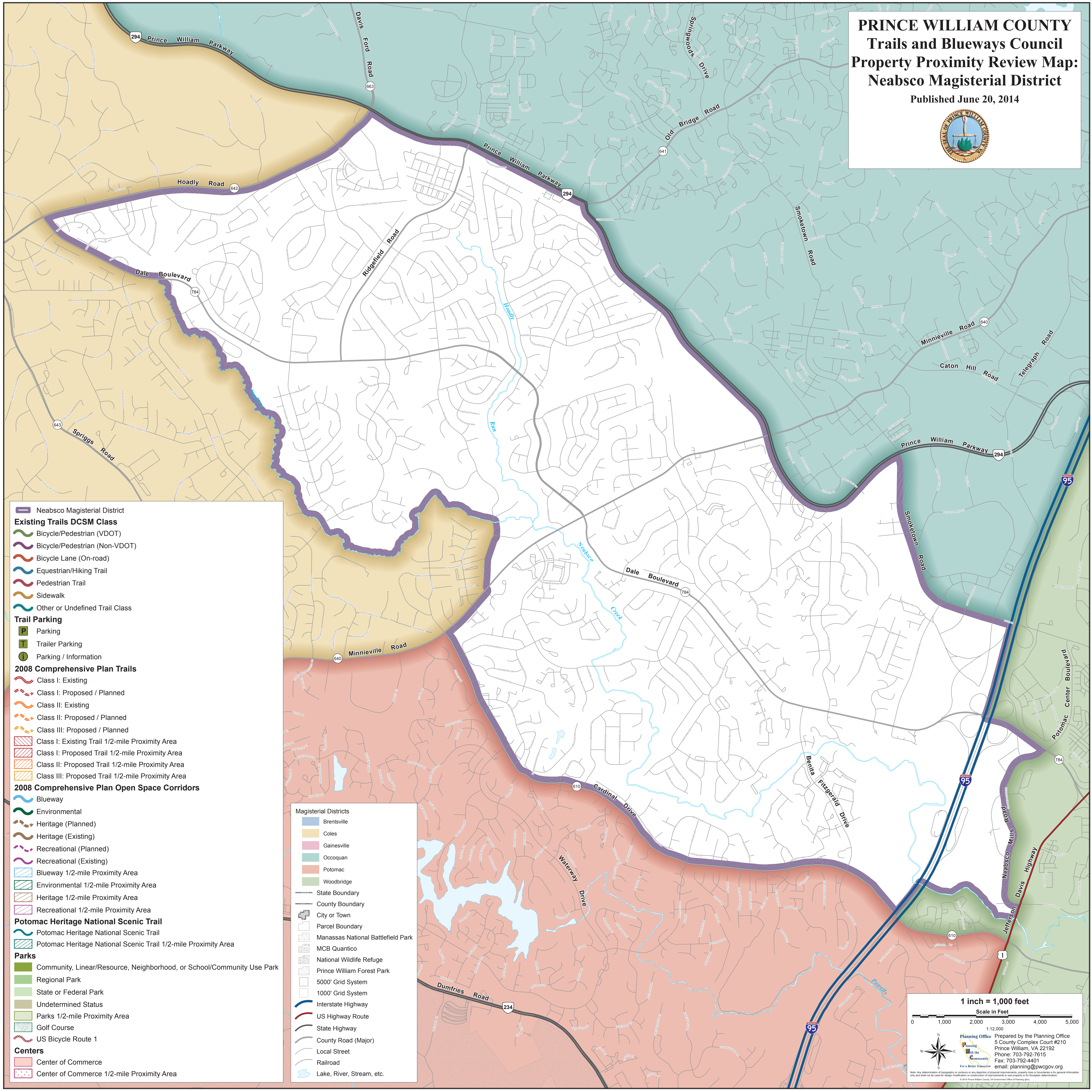


PRINCE WILLIAM COUNTY Trails and Blueways Council Property Proximity Review Map: Neabsco Magisterial District

Published June 20, 2014



- Neabsco Magisterial District
- Existing Trails DCSM Class**
- Bicycle/Pedestrian (VDOT)
- Bicycle/Pedestrian (Non-VDOT)
- Bicycle Lane (On-road)
- Equestrian/Hiking Trail
- Pedestrian Trail
- Sidewalk
- Other or Undefined Trail Class
- Trail Parking**
- Parking
- Trailer Parking
- Parking / Information
- 2008 Comprehensive Plan Trails**
- Class I: Existing
- Class I: Proposed / Planned
- Class II: Existing
- Class II: Proposed / Planned
- Class III: Proposed / Planned
- Class I: Existing Trail 1/2-mile Proximity Area
- Class I: Proposed Trail 1/2-mile Proximity Area
- Class II: Proposed Trail 1/2-mile Proximity Area
- Class III: Proposed Trail 1/2-mile Proximity Area
- 2008 Comprehensive Plan Open Space Corridors**
- Blueway
- Environmental
- Heritage (Planned)
- Heritage (Existing)
- Recreational (Planned)
- Recreational (Existing)
- Blueway 1/2-mile Proximity Area
- Environmental 1/2-mile Proximity Area
- Heritage 1/2-mile Proximity Area
- Recreational 1/2-mile Proximity Area
- Potomac Heritage National Scenic Trail**
- Potomac Heritage National Scenic Trail
- Potomac Heritage National Scenic Trail 1/2-mile Proximity Area
- Parks**
- Community, Linear/Resource, Neighborhood, or School/Community Use Park
- Regional Park
- State or Federal Park
- Undetermined Status
- Parks 1/2-mile Proximity Area
- Golf Course
- US Bicycle Route 1
- Centers**
- Center of Commerce
- Center of Commerce 1/2-mile Proximity Area

- Magisterial Districts**
- Brentsville
- Coles
- Gainesville
- Occoquan
- Potomac
- Woodbridge
- State Boundary
- County Boundary
- City or Town
- Parcel Boundary
- Manassas National Battlefield Park
- MCB Quantico
- National Wildlife Refuge
- Prince William Forest Park
- 5000' Grid System
- 1000' Grid System
- Interstate Highway
- US Highway Route
- State Highway
- County Road (Major)
- Local Street
- Railroad
- Lake, River, Stream, etc.

1 inch = 1,000 feet
Scale in Feet

0 1,000 2,000 3,000 4,000 5,000

1:12,000

Planning Office: Prepared by the Planning Office
5 County Complex Court #210
Prince William, VA 22192
Phone: 703-792-7615
Fax: 703-792-4401
email: planning@pwvcgov.org

Note: Any determination of topography or contours or any depiction of physical improvements, property lines or boundaries is for general information only and shall not be used for design modification or construction of improvements to the property or for boundary determination.
© 2014 Prince William County, VA Government Office of Planning and Design