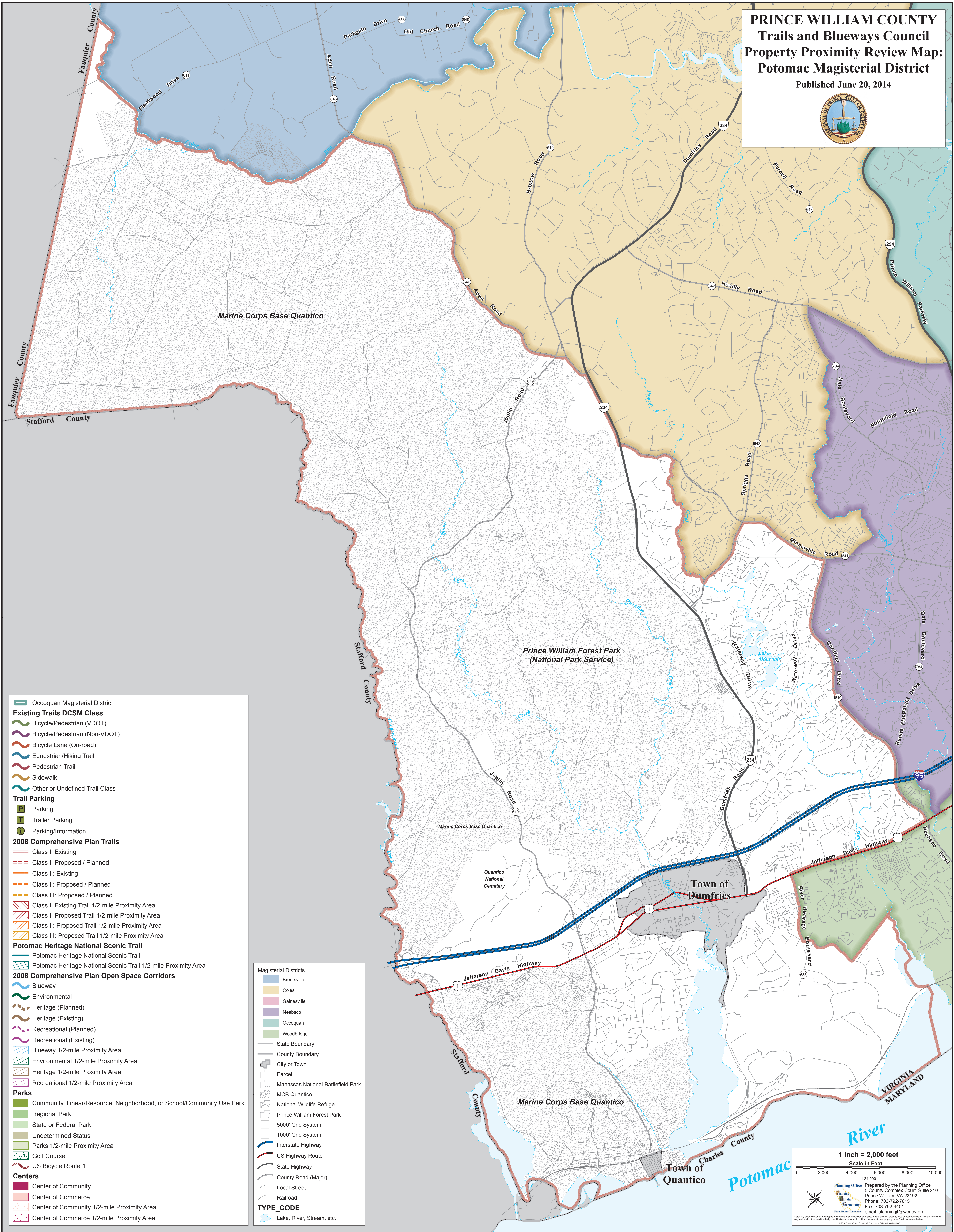


PRINCE WILLIAM COUNTY
Trails and Blueways Council
Property Proximity Review Map:
Potomac Magisterial District
Published June 20, 2014



- Ocoquan Magisterial District
- Existing Trails DCSM Class**
- Bicycle/Pedestrian (VDOT)
 - Bicycle/Pedestrian (Non-VDOT)
 - Bicycle Lane (On-road)
 - Equestrian/Hiking Trail
 - Pedestrian Trail
 - Sidewalk
 - Other or Undefined Trail Class
- Trail Parking**
- Parking
 - Trailer Parking
 - Parking/Information
- 2008 Comprehensive Plan Trails**
- Class I: Existing
 - Class I: Proposed / Planned
 - Class II: Existing
 - Class II: Proposed / Planned
 - Class III: Proposed / Planned
 - Class I: Existing Trail 1/2-mile Proximity Area
 - Class I: Proposed Trail 1/2-mile Proximity Area
 - Class II: Proposed Trail 1/2-mile Proximity Area
 - Class III: Proposed Trail 1/2-mile Proximity Area
- Potomac Heritage National Scenic Trail**
- Potomac Heritage National Scenic Trail
 - Potomac Heritage National Scenic Trail 1/2-mile Proximity Area
- 2008 Comprehensive Plan Open Space Corridors**
- Blueway
 - Environmental
 - Heritage (Planned)
 - Heritage (Existing)
 - Recreational (Planned)
 - Recreational (Existing)
 - Blueway 1/2-mile Proximity Area
 - Environmental 1/2-mile Proximity Area
 - Heritage 1/2-mile Proximity Area
 - Recreational 1/2-mile Proximity Area
- Parks**
- Community, Linear/Resource, Neighborhood, or School/Community Use Park
 - Regional Park
 - State or Federal Park
 - Undetermined Status
 - Parks 1/2-mile Proximity Area
 - Golf Course
 - US Bicycle Route 1
- Centers**
- Center of Community
 - Center of Commerce
 - Center of Community 1/2-mile Proximity Area
 - Center of Commerce 1/2-mile Proximity Area

- Magisterial Districts**
- Brentsville
 - Coles
 - Gainesville
 - Neabsco
 - Ocoquan
 - Woodbridge
- State Boundary**
- County Boundary**
- City or Town**
- Parcel**
- Manassas National Battlefield Park**
- MCB Quantico**
- National Wildlife Refuge**
- Prince William Forest Park**
- 5000' Grid System**
- 1000' Grid System**
- Interstate Highway**
- US Highway Route**
- State Highway**
- County Road (Major)**
- Local Street**
- Railroad**
- TYPE_CODE**
- Lake, River, Stream, etc.**

