

# PRINCE WILLIAM COUNTY Zoning Districts

Published January 1, 2021



## Zoning District Classifications

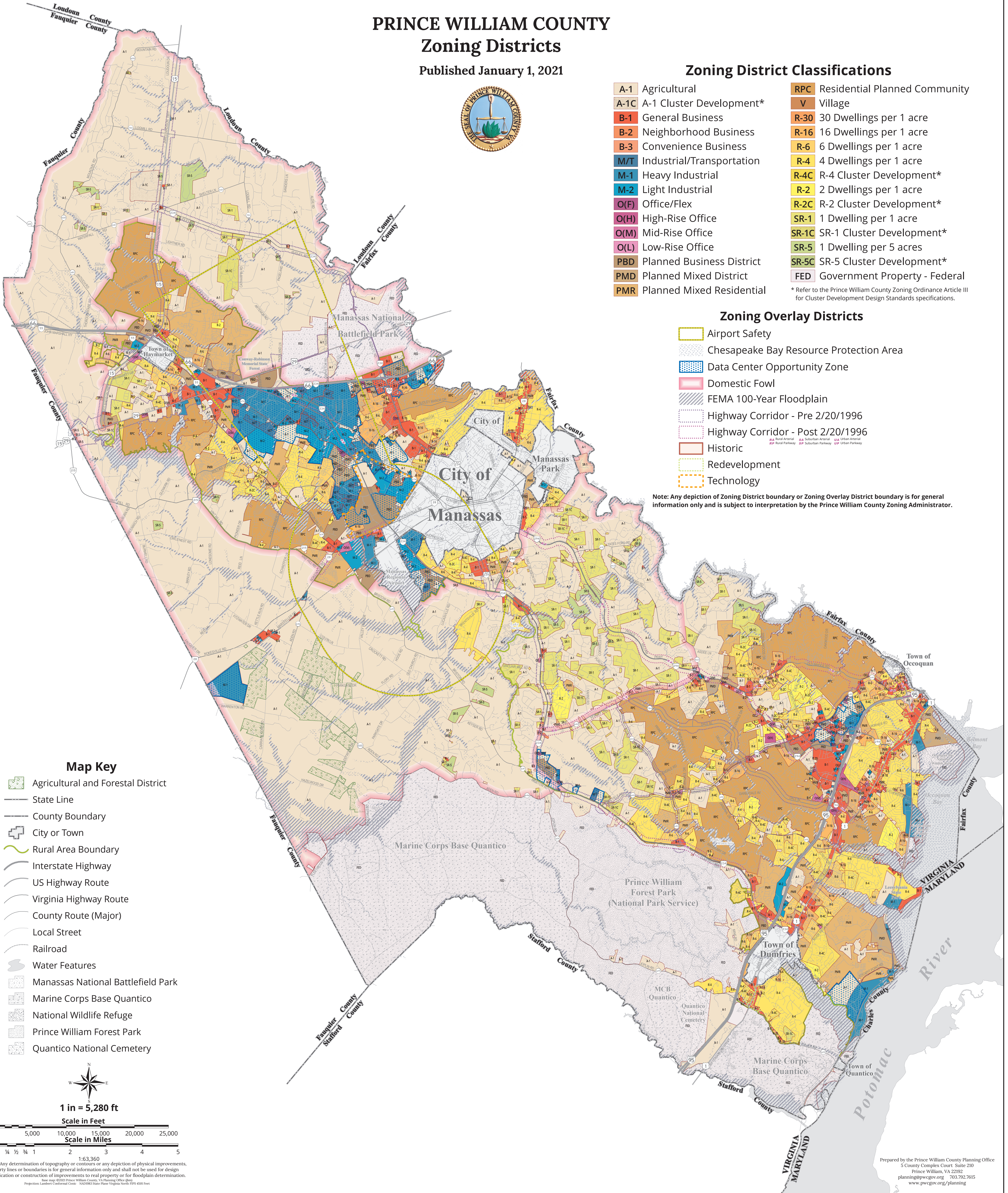
A-1	Agricultural	RPC	Residential Planned Community
A-1C	A-1 Cluster Development*	V	Village
B-1	General Business	R-30	30 Dwellings per 1 acre
B-2	Neighborhood Business	R-16	16 Dwellings per 1 acre
B-3	Convenience Business	R-6	6 Dwellings per 1 acre
M/T	Industrial/Transportation	R-4	4 Dwellings per 1 acre
M-1	Heavy Industrial	R-4C	R-4 Cluster Development*
M-2	Light Industrial	R-2	2 Dwellings per 1 acre
O(F)	Office/Flex	R-2C	R-2 Cluster Development*
O(H)	High-Rise Office	SR-1	1 Dwelling per 1 acre
O(M)	Mid-Rise Office	SR-1C	SR-1 Cluster Development*
O(L)	Low-Rise Office	SR-5	1 Dwelling per 5 acres
PBD	Planned Business District	SR-5C	SR-5 Cluster Development*
PMD	Planned Mixed District	FED	Government Property - Federal
PMR	Planned Mixed Residential		

\* Refer to the Prince William County Zoning Ordinance Article III for Cluster Development Design Standards specifications.

## Zoning Overlay Districts

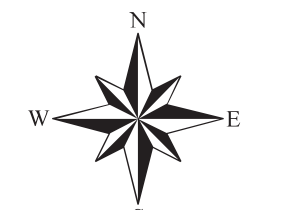
	Airport Safety
	Chesapeake Bay Resource Protection Area
	Data Center Opportunity Zone
	Domestic Fowl
	FEMA 100-Year Floodplain
	Highway Corridor - Pre 2/20/1996
	Highway Corridor - Post 2/20/1996
	Historic
	Redevelopment
	Technology

Note: Any depiction of Zoning District boundary or Zoning Overlay District boundary is for general information only and is subject to interpretation by the Prince William County Zoning Administrator.



## Map Key

	Agricultural and Forestal District
	State Line
	County Boundary
	City or Town
	Rural Area Boundary
	Interstate Highway
	US Highway Route
	Virginia Highway Route
	County Route (Major)
	Local Street
	Railroad
	Water Features
	Manassas National Battlefield Park
	Marine Corps Base Quantico
	National Wildlife Refuge
	Prince William Forest Park
	Quantico National Cemetery



1 in = 5,280 ft

Scale in Feet

0 5,000 10,000 15,000 20,000 25,000

Scale in Miles

0 1/4 1/2 3/4 1 2 3 4 5

1:63,360

Note: Any determination of topography or contours or any depiction of physical improvements, property lines or boundaries is for general information only and shall not be used for design modification or construction of improvements to real property or for floodplain determination.

Base map: ©2021 Prince William County, VA Planning Office (Geo)

Projection: Lambert Conformal Conic - NAD83 State Plane Virginia North 83N 49N Feet

Prepared by the Prince William County Planning Office  
5 County Complex Court Suite 210  
Prince William, VA 22192  
planning@pwco.org 703.792.7615  
www.pwco.org/planning