



**PRINCE WILLIAM**  
COUNTY

**10-A**  
**Staff**

# 2021 County Redistricting Update

November 9, 2021

# Redistricting To Date



- Board adopted Redistricting Criteria – May 18, 2021
- ARCBridge Consulting was chosen as contractor/consultant – August 4, 2021
- Legacy Census Data was made available – August 13, 2021
- Tabulated Census Data was made available – September 16, 2021
- Prison Population Apportionment Data Released – September 2021
- Staff met with BOCS to gather initial feedback and data – September 2021
- ARCBridge drafted 2 maps – 7 districts and 8 districts – September-October 2021

# 7 Districts/8 Districts



## 7 Districts

- Addresses where growth occurred
- Must reprecinct

## 8 Districts

- Addresses where growth occurred
- Becomes effective immediately
- 8<sup>th</sup> District BOCS member and School Board member elected in 2022
  - Another election in 2023 (on cycle)
- Cost absorbed in FY23 Budget
  - Estimated First year: \$1.1 million - \$1.6 million
  - Estimated Ongoing: \$786,000 - \$827,000
- Must reprecinct

# Timeline



Nov. 9,  
2021

- Board decides to move forward with 7 or 8 district map

Nov  
2021

- Community input and feedback
- Reprecincting

Dec. 7,  
2021

- Public hearing is advertised, all material is available (maps, precincts, descriptions)

Dec. 21,  
2021

- BOCS holds public hearing and adopts redistricting measures by ordinance
- After BOCS adopts, County Attorney submits to the Attorney General and asks for issuance of a certification of no objection

Questions?





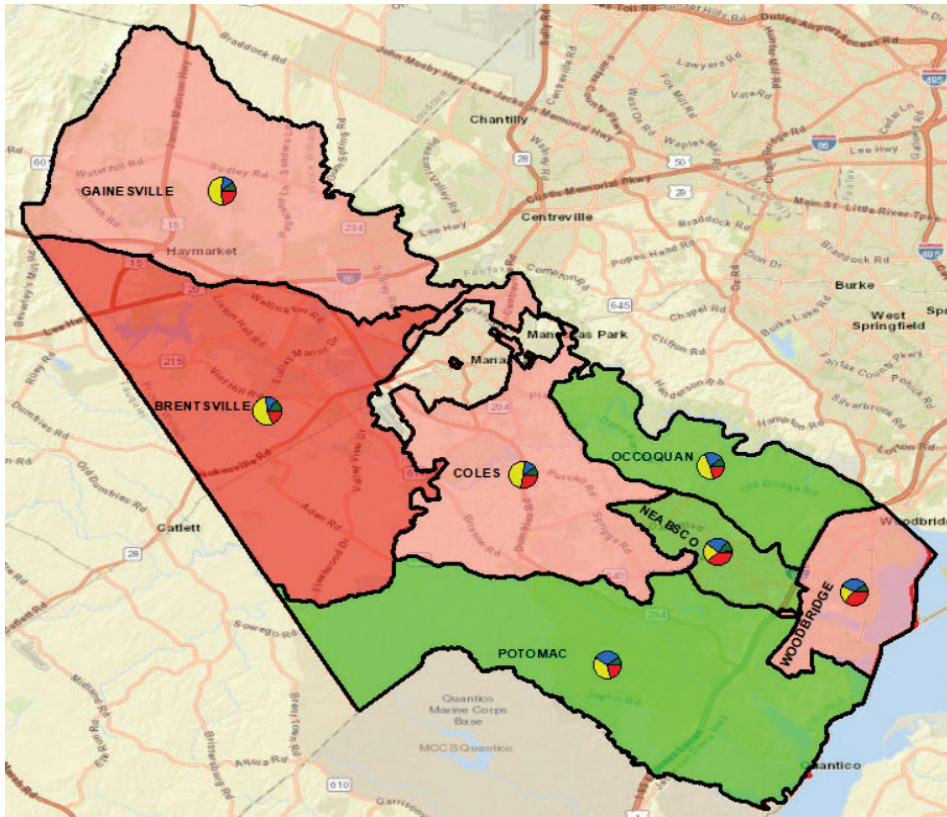
# PRINCE WILLIAM COUNTY Redistricting 2021

---



ARCBridge Consulting & Training Inc.  
[www.arcbridge.com](http://www.arcbridge.com)

# Current Districts with 2020 Census Data



Population in 2010 -	402,002
Population in 2020 -	482,204
Gain -	80,202
Prison- Adjusted population	482,691
2020 Ideal Population with 7 districts –	68,886
2020 Ideal Population with 8 districts –	60,276

Brentsville District has the most population  
Neabsco District has the least population

Name	Count	Optimum	Deviation	Deviation %
BRENTSVILLE	75,844	68,886	6,958	10.10%
COLES	71,847	68,886	2,961	4.30%
GAINESVILLE	70,566	68,886	1,680	2.44%
NEABSCO	61,327	68,886	-7,559	-10.97%
OCCOQUAN	62,969	68,886	-5,917	-8.59%
POTOMAC	68,098	68,886	-788	-1.14%
WOODBIDGE	71,553	68,886	2,667	3.87%

Comparison with ideal population

- >10% Below
- <10% Below
- None
- <10% Above
- >10% Above

# Plan Options

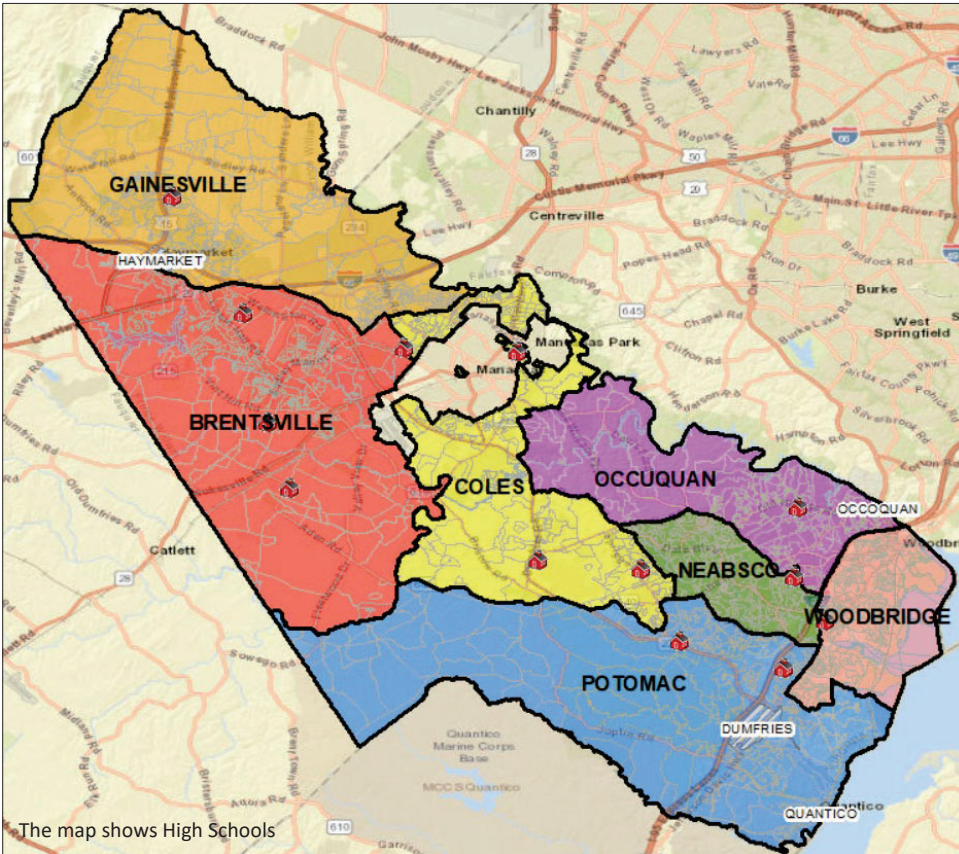
---

PLAN 1 WITH 7 AND PLAN 2 WITH 8 DISTRICTS

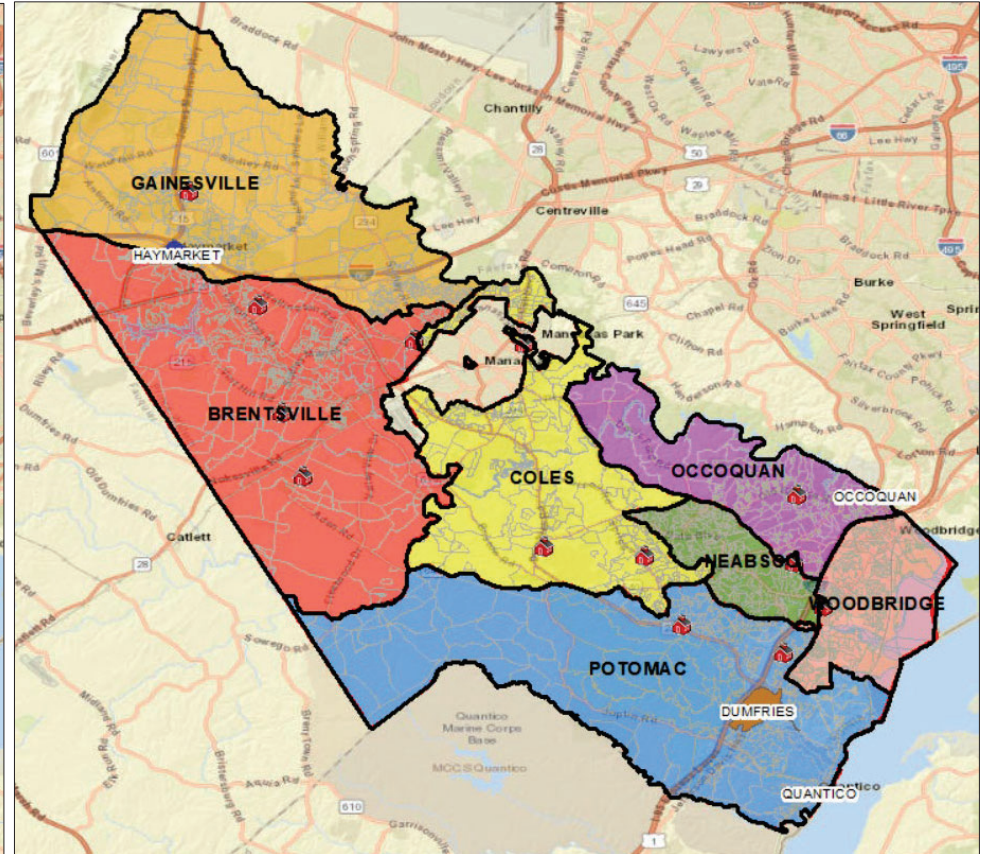


# Plan 1 with 7 Districts vs Current Districts

Plan 1 (Max. Dev- 2.51%)



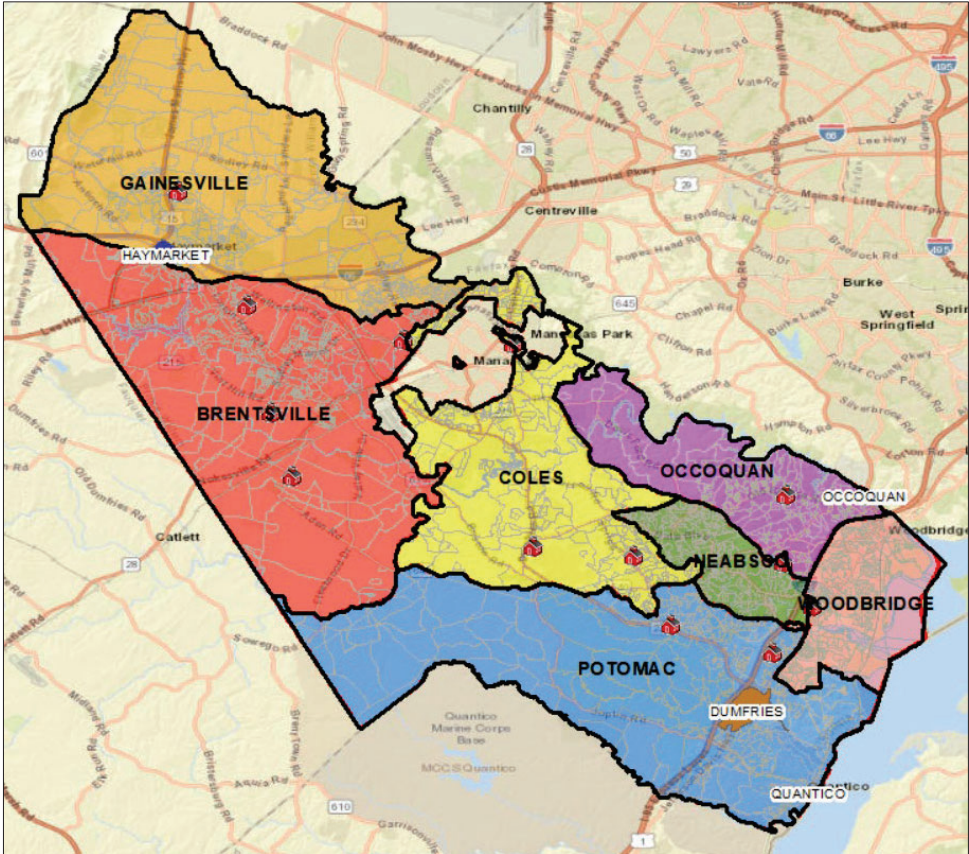
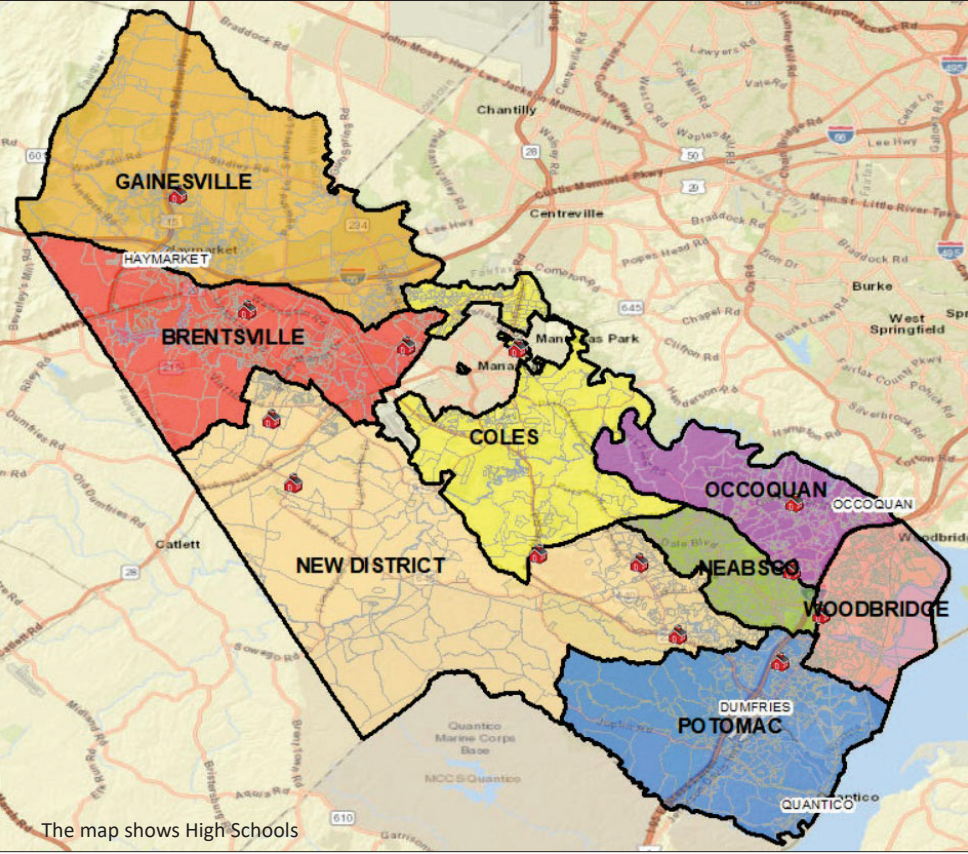
Current 7 Districts (Max. Dev – 20.24%)



# Plan 2 with 8 Districts vs Current Districts

8 Districts (Max. Dev- 2.90%)

Current 7 Districts (Max. Dev- 20.24%)



# Current District Statistics – Maximum Deviation – 20.24%

Current

		Hispanic	NH White	NH Black	NH AIAN	NH Asian	NH NHOPI	NH Other	NH - 2+ Race	Total	Prison-Adjusted
1	Brentsville	13,254	38,673	8,896	105	9,865	57	424	4,539	75,813	75,463
2	Coles	19,314	32,290	9,001	88	6,735	59	506	3,885	71,878	72,004
3	Gainesville	15,687	34,981	7,788	88	7,850	35	403	3,734	70,566	70,662
4	Neabsco	22,573	12,942	15,351	109	6,789	58	604	2,901	61,327	61,508
5	Occoquan	12,652	27,652	12,065	114	6,218	71	457	3,740	62,969	63,071
6	Potomac	13,222	23,976	20,322	149	5,808	157	501	3,963	68,098	68,237
7	Woodbridge	24,822	14,534	21,516	92	6,571	70	489	3,459	71,553	71,746
										482,204	482,691

## Racial Ethnic Composition of Each District % Based on Prison-Adjusted Population

		Hispanic%	NH White%	NH Black%	NH AIAN%	NH Asian%	NH NHOPI%	NH Other%	NH - 2+ Race%
1	Brentsville	17.56%	51.25%	11.79%	0.14%	13.07%	0.08%	0.56%	6.01%
2	Coles	26.82%	44.84%	12.50%	0.12%	9.35%	0.08%	0.70%	5.40%
3	Gainesville	22.20%	49.50%	11.02%	0.12%	11.11%	0.05%	0.57%	5.28%
4	Neabsco	36.70%	21.04%	24.96%	0.18%	11.04%	0.09%	0.98%	4.72%
5	Occoquan	20.06%	43.84%	19.13%	0.18%	9.86%	0.11%	0.72%	5.93%
6	Potomac	19.38%	35.14%	29.78%	0.22%	8.51%	0.23%	0.73%	5.81%
7	Woodbridge	34.60%	20.26%	29.99%	0.13%	9.16%	0.10%	0.68%	4.82%

# Plan 1 with 7 Districts - District Statistics

Plan 1 with 7 Districts

		Hispanic	NH White	NH Black	NH AIAN	NH Asian	NH NHOPI	NH Other	NH - 2+ Race	Total	Prison- Adjusted
1	Brentsville	9382	37605	7936	90	9,389	54	385	4328	69,169	69,251
2	Coles	21,804	28,817	8,736	84	6,725	51	476	3,600	70,293	69,968
3	Gainesville	15,098	34,384	7,528	88	7,517	34	395	3,644	68,688	68,784
4	Neabsco	24,431	14,585	17,438	116	7,530	63	643	3,236	68,042	68,243
5	Occoquan	13,154	31,331	12,493	127	6,500	78	503	4,093	68,279	68,388
6	Potomac	13,222	23,976	20,322	149	5,808	157	501	3,963	68,098	68,237
7	Woodbridge	24,433	14,350	20,486	91	6,367	70	481	3,357	69,635	69,820
										482,204	48,2691

**Racial Ethnic Composition of Each District % Based on Prison-Adjusted Population**

		Hispanic%	NH White%	NH Black%	NH AIAN%	NH Asian%	NH NHOPI %	NH Other%	NH - 2+ Race%
1	Brentsville	13.55%	54.30%	11.46%	0.13%	13.56%	0.08%	0.56%	6.25%
2	Coles	31.16%	41.19%	12.49%	0.12%	9.61%	0.07%	0.68%	5.15%
3	Gainesville	21.95%	49.99%	10.94%	0.13%	10.93%	0.05%	0.57%	5.30%
4	Neabsco	35.80%	21.37%	25.55%	0.17%	11.03%	0.09%	0.94%	4.74%
5	Occoquan	19.23%	45.81%	18.27%	0.19%	9.50%	0.11%	0.74%	5.98%
6	Potomac	19.38%	35.14%	29.78%	0.22%	8.51%	0.23%	0.73%	5.81%
7	Woodbridge	34.99%	20.55%	29.34%	0.13%	9.12%	0.10%	0.69%	4.81%

**Maximum  
Deviation is 2.51%**

# Plan 2 with 8 Districts - District Statistics

Plan 2 with 8 Districts

		Hispanic	NH White	NH Black	NH AIAN	NH Asian	NH NHOPI	NH Other	NH - 2+ Race	Total	Prison-Adjusted
1	Brentsville	12,079	27,987	7,333	72	8,453	35	341	3,585	59,885	59,976
2	Coles	18,189	27,476	5,850	89	5,371	30	397	2,896	60,298	59,961
3	Gainesville	10,565	31,917	6,700	69	6,986	34	358	3,361	59,990	60,058
4	Neabsco	22,573	12,942	15,351	109	6,789	58	604	2,901	61,327	61,508
5	New District	10,353	30,872	9,607	107	5,181	75	351	3,778	60,324	60,398
6	Occoquan	12,389	25,796	11,966	107	6,069	71	446	3,612	60,456	60,555
7	Potomac	12,930	15,268	22,711	117	5,374	145	479	3,297	60,321	60,479
8	Woodbridge	22,446	12,790	15,421	75	5,613	59	408	2,791	59,603	59,756
										482,204	482,691

## Racial Ethnic Composition of Each District % Based on Prison-Adjusted Population

		Hispanic %	NH White%	NH Black%	NH AIAN%	NH Asian%	NH NHOPI %	NH Other%	NH - 2+ Race%
1	Brentsville	20.14%	46.66%	12.23%	0.12%	14.09%	0.06%	0.57%	5.98%
2	Coles	30.33%	45.82%	9.76%	0.15%	8.96%	0.05%	0.66%	4.83%
3	Gainesville	17.59%	53.14%	11.16%	0.11%	11.63%	0.06%	0.60%	5.60%
4	Neabsco	36.70%	21.04%	24.96%	0.18%	11.04%	0.09%	0.98%	4.72%
5	New District	17.14%	51.11%	15.91%	0.18%	8.58%	0.12%	0.58%	6.26%
6	Occoquan	20.46%	42.60%	19.76%	0.18%	10.02%	0.12%	0.74%	5.96%
7	Potomac	21.38%	25.25%	37.55%	0.19%	8.89%	0.24%	0.79%	5.45%
8	Woodbridge	37.56%	21.40%	25.81%	0.13%	9.39%	0.10%	0.68%	4.67%

**Maximum Deviation is 2.90%**