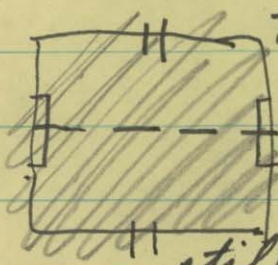


descr.

This small, 1½-story, heavy-timber-constructed gable-roofed house formerly had ~~two~~ a large chimney at either end, ^{both of} which were removed sometime in the early 20th century. The house, an almost square, double-pile plan house with an enclosed staircase, rests on a high stone foundation. ~~and~~ ^{is its} ^{weatherboarded} exterior was recently sheathed ~~in~~ with aluminum siding. ~~Formerly there~~ ~~was~~ The rubble masonry foundation, composed of sandstone and "mountain stone," stands approximately 45" high, is mortared with portland cement, and has a 2-inch water table, all around. The house has a box [#] cornice, gable returns, double cornerboards, and a moulded rake. The earlier box trim around the ¾ sliding sash windows and doors ~~are surrounded by box trim~~ has been covered ~~over~~ with aluminum.

There is a small addition on the south end containing a bathroom and flanked on either side by an ^{enclosed} ~~open~~ porch. An open porch on the north end dates to the early 1900s, when the exterior end chimney was

turned down. New ~~doors~~ have doorways to the outside have been added, and existing ones have been blocked.



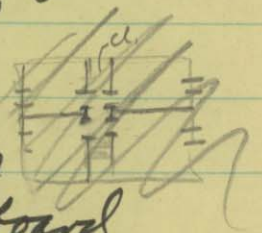
The plan of four almost equal-sized rooms on the first floor has remained the same, but three of the four rooms have been ~~renovated~~

remodeled. The dining room, however, still contains some old chair rail, a corner cupboard, old ^{6-panel} doors ^{with h-l hinges,} and

an old pine floor. Elsewhere throughout the house are both 6-panel and 4-panel doors. The enclosed stair rises between the two rear rooms, the present kitchen and a bedroom. It is a fairly wide, single-landing, single-flight, straight run stair which ~~can be~~ can be entered from either of the two rear rooms.

The stair walls are paneled, as ^{are the walls and ceiling of the} so the ~~entire~~ upper floor, with ^{wide,} beaded ~~vertical~~ boards.

There are four small rooms on the second floor. The doors upstairs are ~~to~~ board and batten. Behind the house is a collection of wooden sheds and a small frame barn. In front of the house is a small cinder block



(2)

shed, probably built on the site of an earlier out building. Beside that is a covered well. According to the owner, there was a large barn north of the house, which was demolished.