

BEN LOMOND
(MANOR HOUSE)

76-4

3/12

door - painted white over
buff over blue gray.

restored? outbldg.

6 paneled door.

V. weathered.

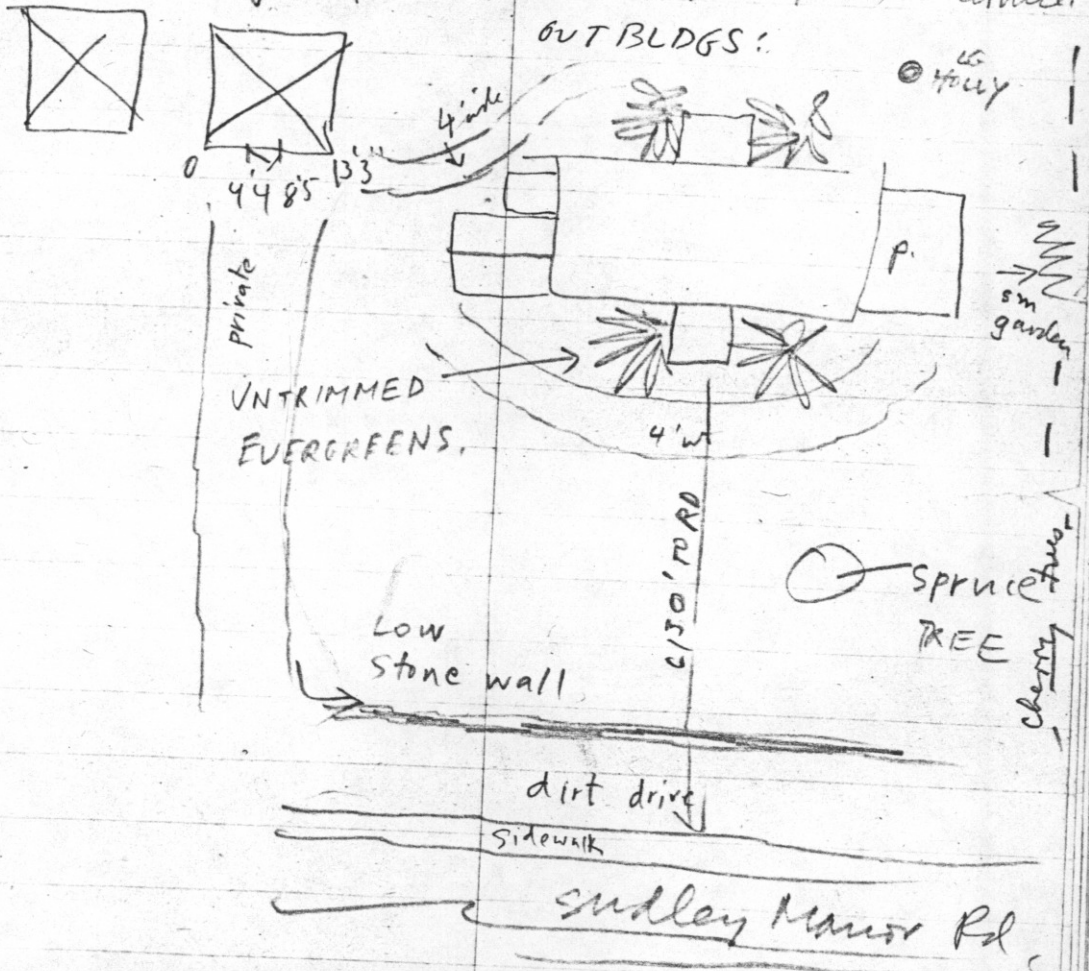
from somewhere else?

door is 6'2" x 3'7 1/4

shingle roof
repointed w portland c.

lowest rail is shortened?

repl. hinges. Box cornice.

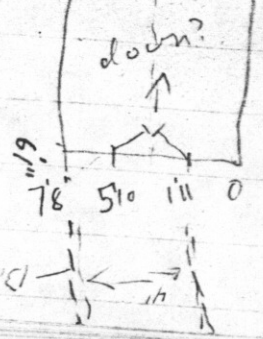
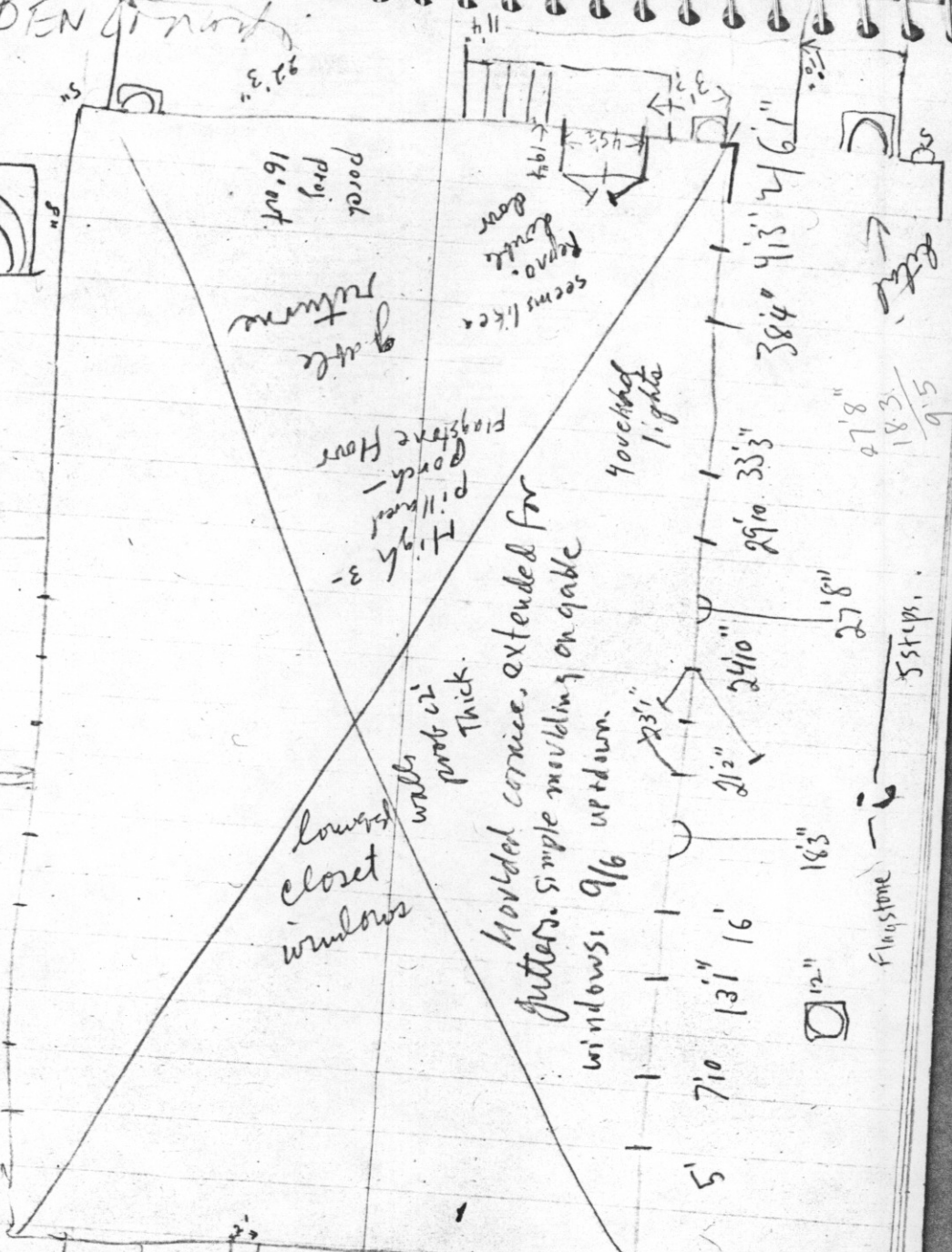


BEN



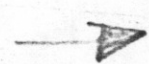
8'9" 4 steps

23 X 46



1 story modern frame addition

RATHER HIGH BASEMENT and shutters



47'8" / 18'3" / 9'5"

5 steps

Flagstone



5' 7'10" 13'1" 16"

29'10" 33'3"

384" 4'13" 4'6"

gate return

pillars - 3 - High - 3 -

lowered closet windows

Moulded cornice, extended for gutters. simple moulding on gable windows: 9/16 up/down

touched light

seems like

porch proj 16' out