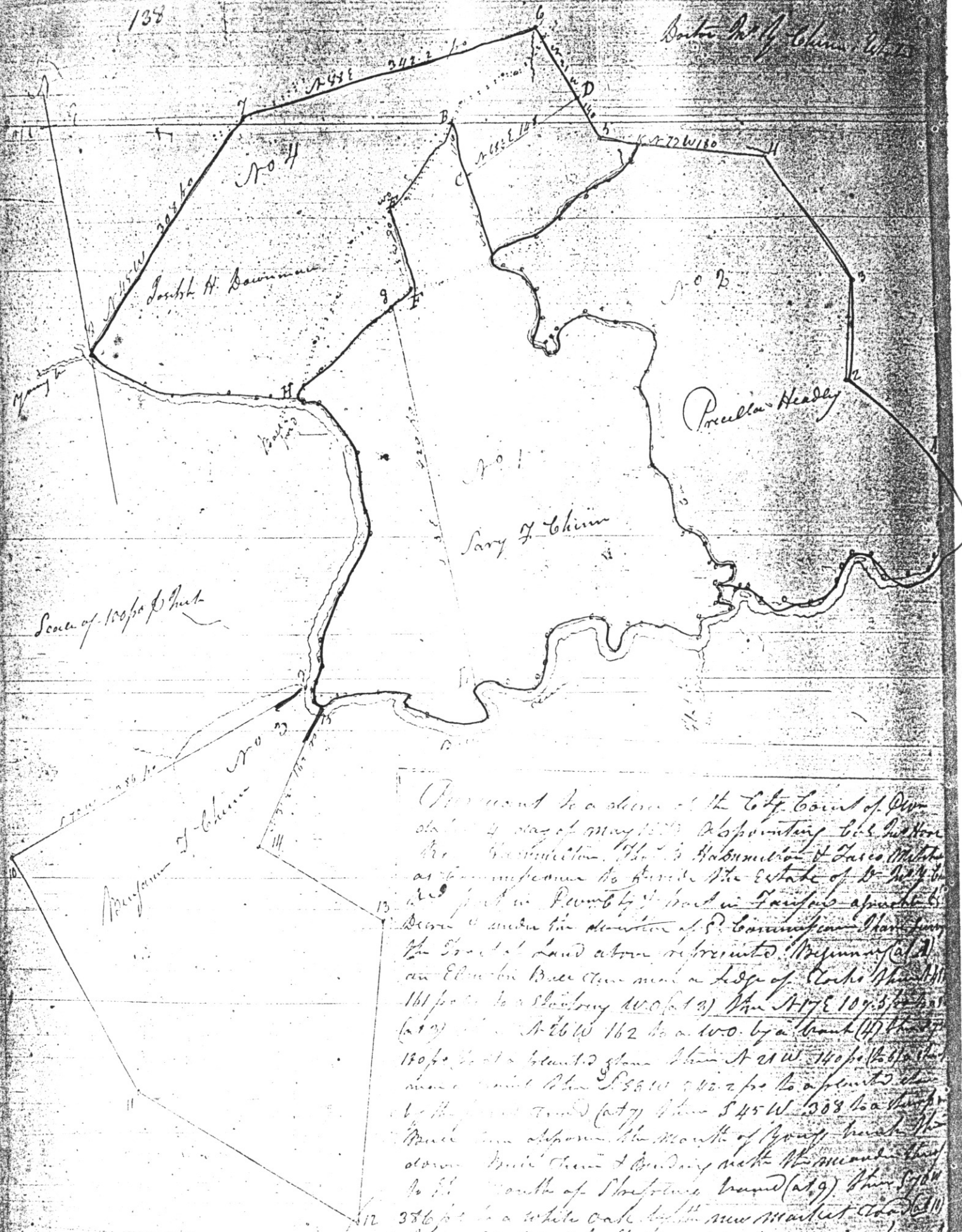


Barth W. of China White



Pursuant to a decree of the City Council of New
 York dated 4 day of May 1852 appointing Geo. W. Wood
 Esq. Surveyor. The said Surveyor & James M. Little
 as Commissioners to divide the estate of Dr. W. W. Wood
 deceased in conformity to a deed in California a parcel of
 land & under the direction of S. C. Cunningham Esq. Surveyor
 the several lands above represented beginning at (1)
 an Elm tree base then a ledge of rocks (2) 161 feet to a
 slatery W. O. (3) then N 77 E 109.3 feet (4) then
 S 22 W 162 to a W. O. by a bank (5) then
 180 feet to a slatery then N 21 W 140 feet to a
 mound of earth then S 56 W 240 feet to a fence then
 by the fence to a pond (6) then S 45 W 130 feet to a
 mound of earth upon the mouth of Spring branch the
 down side then a boundary with the mound then
 to the mouth of Spring branch (7) then S 56 W
 386 feet to a white oak by the new market (8) then
 then S 70 E 294 feet (9) corner shown by Mr. Cunningham
 agree to be the monument of the land then a line to the
 corner of the land then a line to the corner of the land

agree to be the monument of the land then a line to the corner of the land then a line to the corner of the land