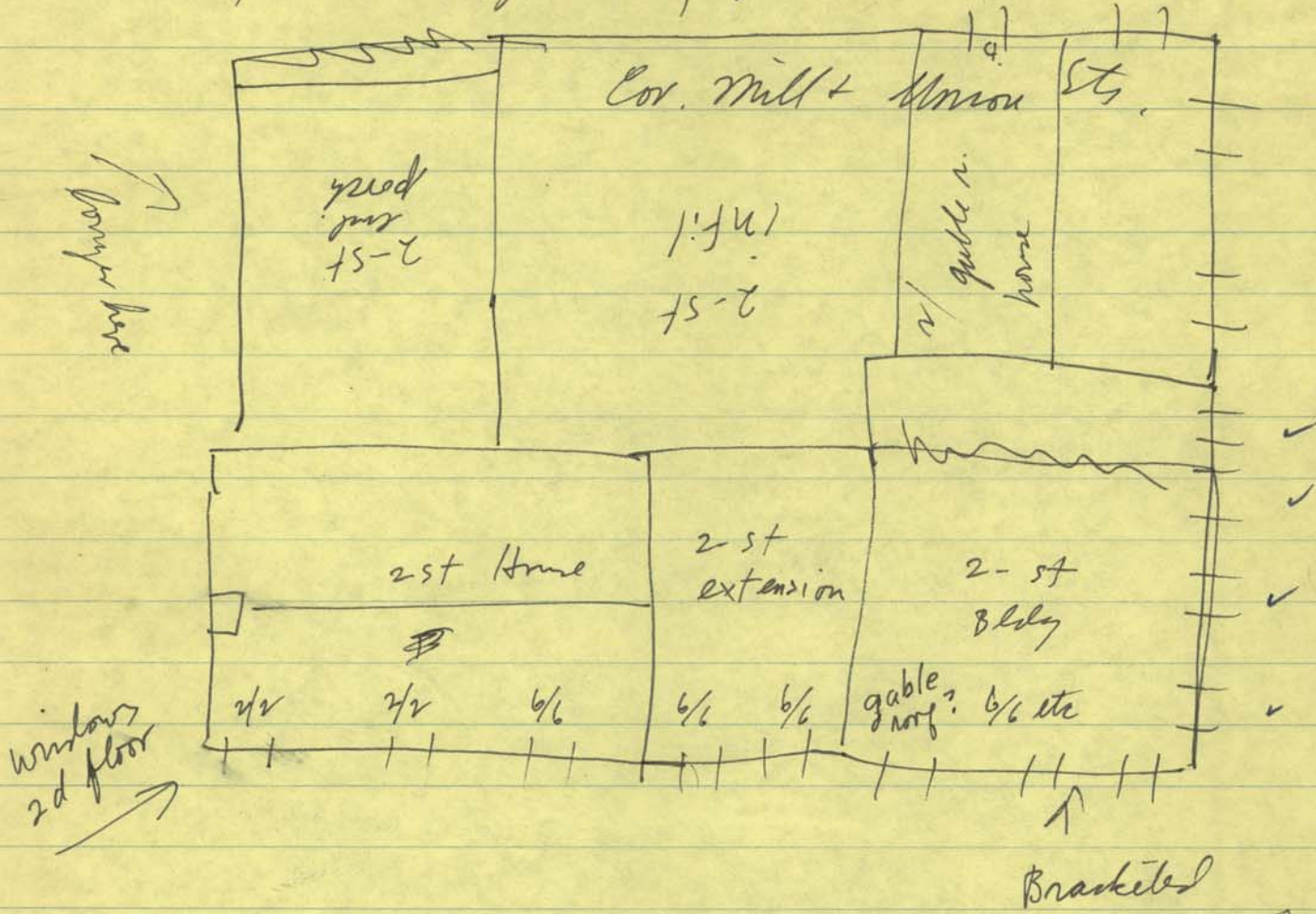


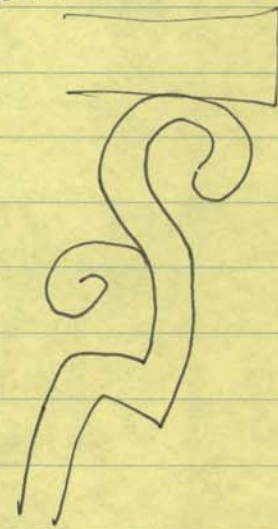
photos. 12/29  
4906

Chuckling Oyster 302 Mill St.  
Alley Arms Efficiency Apts.



part. cov. w/ alum siding.  
1st floor windows cov. bldg all  
repl.

asphalt shingle



contact owner

mill st. +  
Poplar Alley.

chuckling oyster + — apts,

57-02-26

Donald L + Ruby F Sonner — P.O. Box 40, OCCOQUAN.

12120 Mill St. (prem)

8.000 F

DB450-p.226

4,220 C.

16,420 B.

90 YRS OLD IN 1974.

1970

1860+-

36

2 ST SP

10

12

56

2/0

1-ST  
FR.

24

2 ST, apt Bldg. (conv. to

REST.) WOOD FR., WOOD

SID., PANELED WALLS,

3 baths.

metal garage

2D FL VAL IN 1970.

54

BLACKBEARDS 1973.

Rest. remod. 1978. BP #110

prev. owner. John Leary.

plaster walls.

pine flrs.

1 FP.

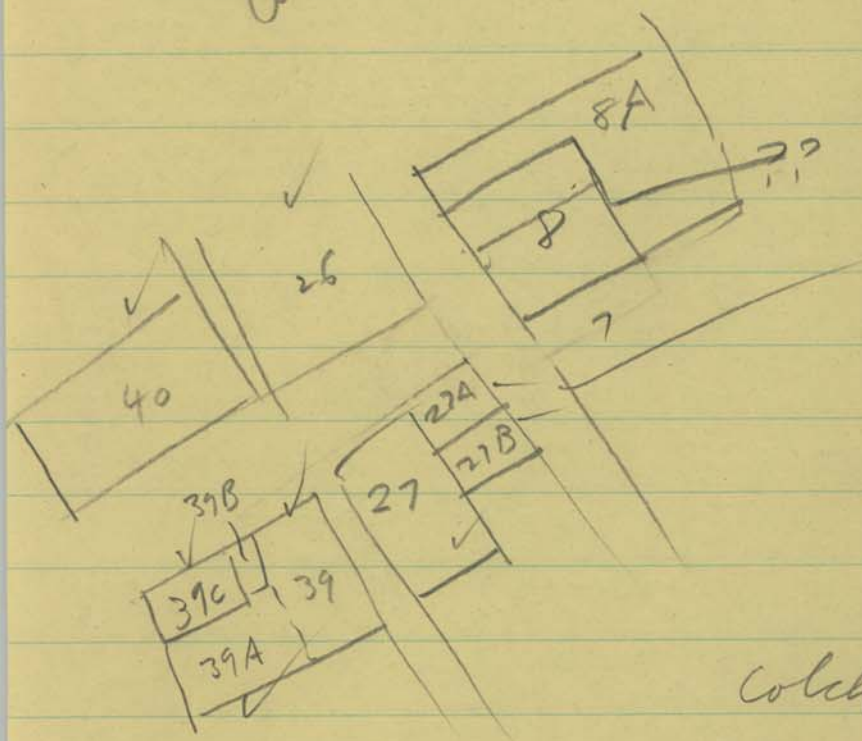
9 ROOMS. grocery store.

TO Rowena Leary in 1965 WB 22 p.489

TO Donald Sonner in 1967 DB450 p 226

55,000 for 2.

photo  
occupancy  
for 1979  
Ch. units 8-80



Corner Union + Commerce St.  
39C

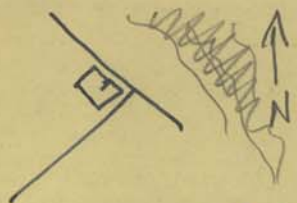
39B small p.

Colch. Sh. 39

39A

27

arch.



This is a collection of three, perhaps four, two-story frame-constructed buildings, with additions, located at the ~~east~~ southwest corner formed on the south side of Mill Street and the west side of Union Street. The corner building, a ~~former~~ grocery store prior to its conversion to a restaurant, asphalt shingle-covered now has a ~~bluff~~ modified, hip roof to conform with the gable roofs of the adjacent buildings, but it probably once ~~previously~~ had a <sup>metal-covered</sup> shed roof or "flat" roof. This building has a bracketed and dentiled box cornice, and its four bays by three bays exterior is clad with wide-gauge aluminum siding. The entrance to the restaurant is located in this building. The first floor exterior contains several panels of large, multiple-pane windows, set between square, recessed, moulded columns. Applied decoration at the first floor level consists of a bracketed, moulded, dentiled cornice. The upper floor windows in this section are  $\frac{1}{6}$  sliding sash, surrounded

by architrave moulding and <sup>flanked by</sup> ~~having~~ dark-colored shutters. The front door, a multiple-pane glass, double door, is reached by an open brick stoop with an iron rail.

Attached to the ~~corner~~ <sup>(north end)</sup> corner building's is a two-story gable-roofed, aluminum-clad, frame building, having a two-story rear addition and a one-story shed-roofed addition. There is wide aluminum box trim surrounding the 4/6 (replacement) sliding sash, shuttered windows.

A late-19<sup>th</sup> century - early 20<sup>th</sup> century former residence ~~structure~~, most of the identifying or distinguishing architectural or decorative details have been concealed or ~~obliterated~~ by the new siding.

On the corner building's southwest end, facing Union Street, is a frame-constructed, two-story, weatherboard-clad, gable roofed, ~~form~~ (Federal style?) former residence. Five bays long by two bays deep, it has a moulded cornice, a paneled frieze, and gable returns. \* The windows <sup>reproduction-style</sup> [on the first floor front are replacements, but those on the

second floor are  $3/2$  sliding sash with plain box trim. The windows have dark-colored shutters. The front, pedimented, entrance is located in the center bay. The ~~gable roofed~~ projecting pediment is supported by square columns. The front, (probably reproduction) ~~door is a~~ double door has ~~two~~ three tiers of two panels per door. There is an interior, brick ~~and~~ chimney projecting from the southwest end, probably a stove flue. Attached to the southwest end is a one-story ~~frame~~<sup>metal</sup> garage and storage area. Behind the whole complex and filling in the el formed by the three buildings is a two-story frame, shed-roofed (probably once ~~an enclosed~~ a two-story porch) addition.

The interior of parts of the three buildings was remodeled in 1978. Room division, partitions, flooring, etc., probably has been

\* Building may be four bays long with a connector bay to the corner buildings

renovated more than once. Ceilings, 1st floor, restaurant are high, pressed tin. Some plaster walls remain.

This collection of buildings, though no serious attempt has been made at restoration, is an important component in the commercial section of old Occoquan.

## History

The present owners purchased the property in 1967 from Rowena Leary. Leary had received it by inheritance in 1965 from John Leary. At the time of John Leary's ownership, the building(s) housed a grocery store. It is said that at one time, there were five grocery or general merchandise stores operating in Occoquan.

Blackbeard's Restaurant was opened in 1973, a year after floods damaged much of the town. ~~after Hurricane~~

caused by  
Hurricane  
Agnes

~~Agnes~~. In about 1978, the management of the restaurant changed, and it was renamed the Chuckling Oyster. Since the beginning of 1980, however, the ~~same Blackbeard's~~ restaurant has been called Blackbeard's.