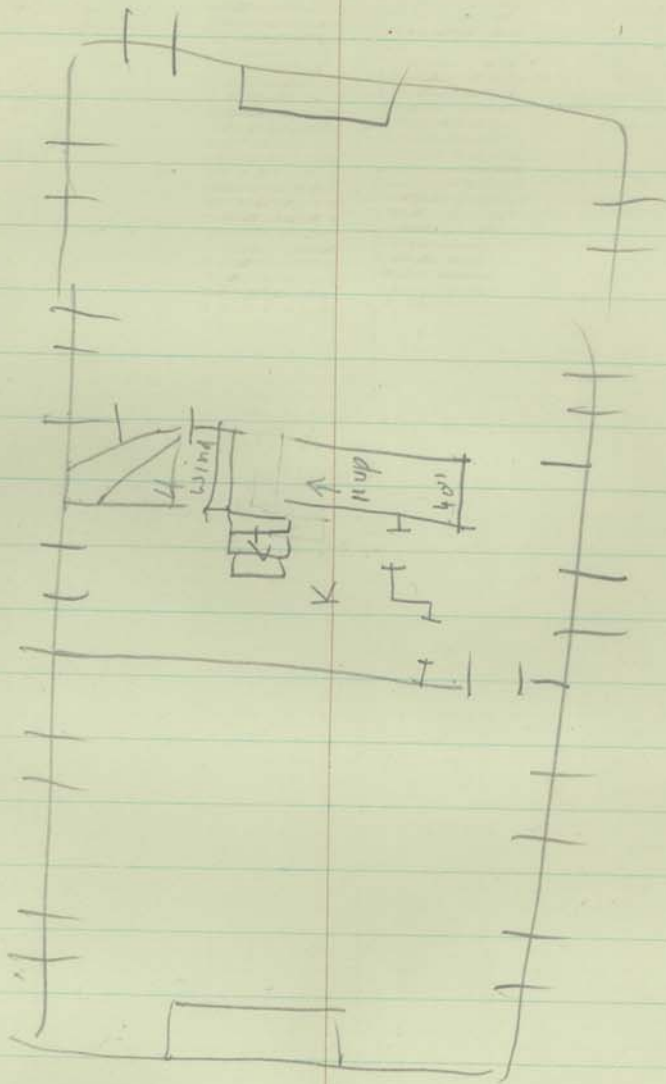


Bradley,

4-15-81



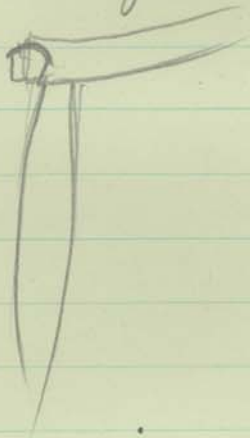
treats = 11

doors = 7 1/2

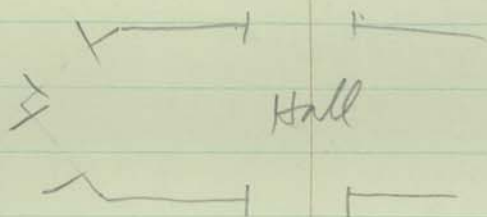
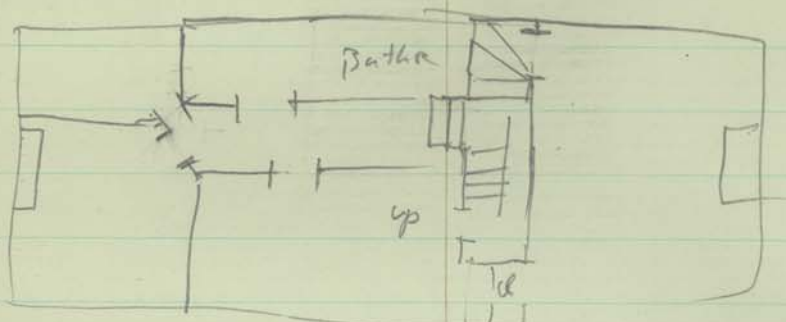
Bradley 4-15

keyed elliptical arch ~~below~~ in  
hall, has "ribbon-motif" carving  
on both outer edges.

newel is a slender colonette  
rail terminates atop newel  
4 square bal.

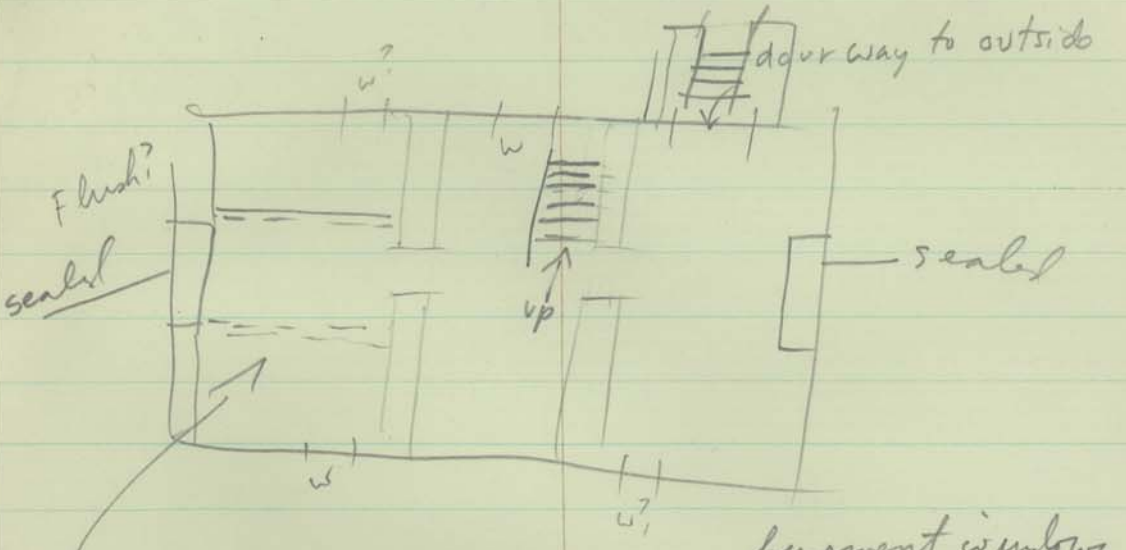


4-15



Bradley.

basement floor has been cemented



basement windows  
not dir. below  
the 1st floor windows

bracing supports,

1 riven

signs of lath + plaster in both rooms  
in basement.

walls to the waist have been cov. of  
concrete.

beams are hemu & pit sawn

simple stair w/ open treads (not old).

Floors. 1st floor covered over  
w/ tile or sub-flooring.

2d fl. room on north has had a  
new oak floor laid on top of old one

rooms on north except bedroom  
have med-width pine floors.