

ICATLETT
5461 II NW

Mapped, edited, and published by the Geological Survey

Control by USGS, USC&GS, and USCE

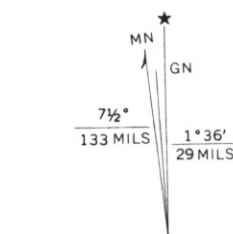
Topography by photogrammetric methods from aerial photographs taken 1964. Field checked 1968

Supersedes Army Map Service map dated 1953

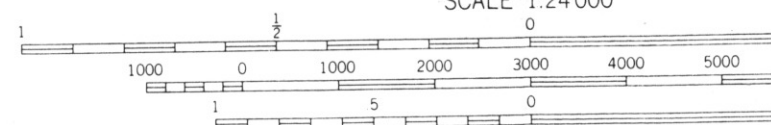
Polyconic projection. 1927 North American datum
10,000-foot grid based on Virginia coordinate system, north zone
1000-meter Universal Transverse Mercator grid ticks,
zone 18, shown in blue

Fine red dashed lines indicate selected fence and field lines where generally visible on aerial photographs. This information is unchecked

Red tint indicates area in which only landmark buildings are shown

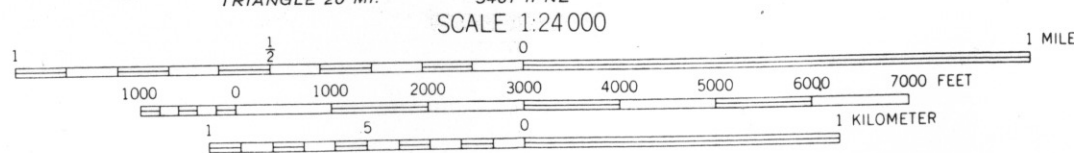
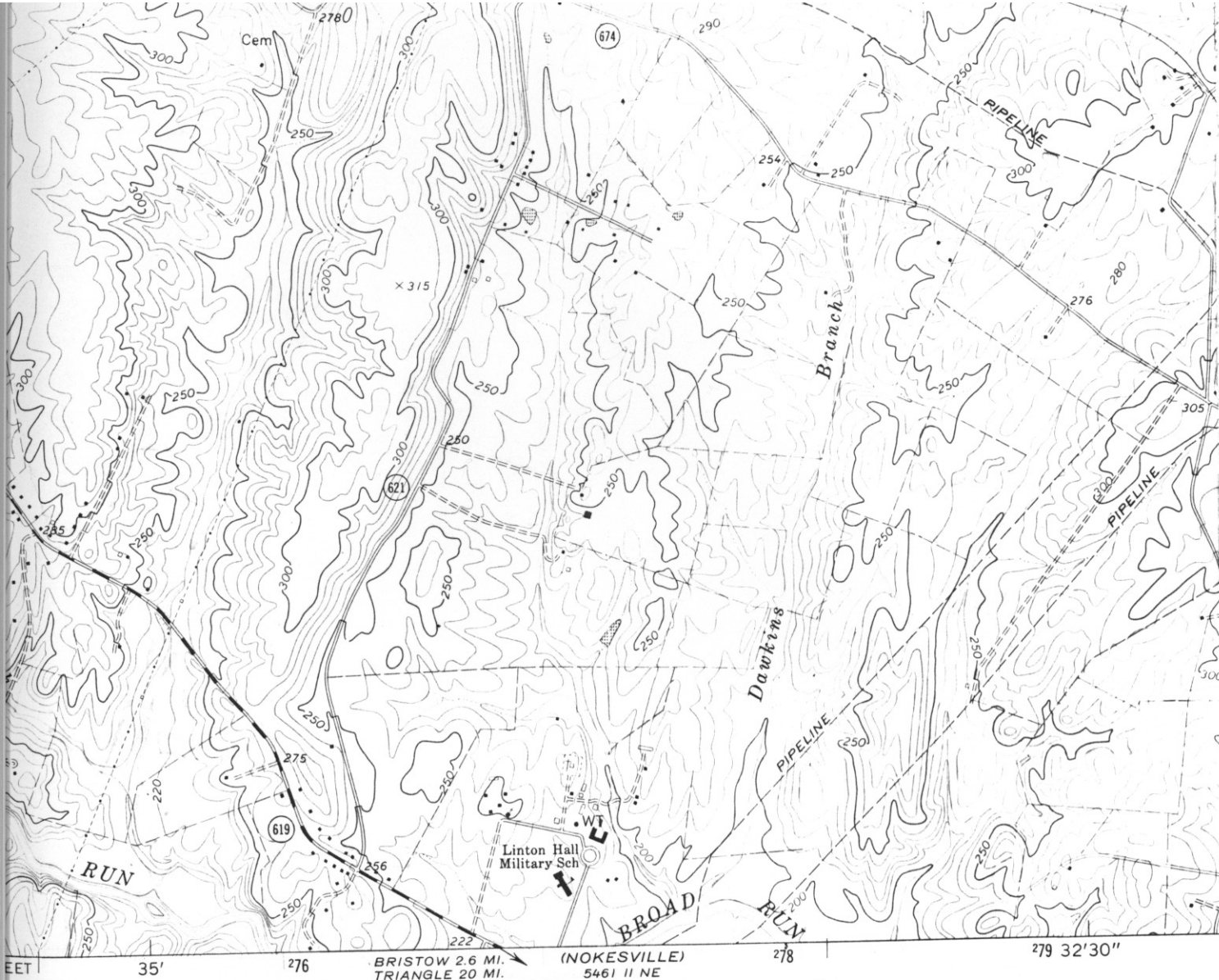


UTM GRID AND 1972 MAGNETIC NORTH
DECLINATION AT CENTER OF SHEET



CONTOUR INTERVAL 10 FEET
DATUM IS MEAN SEA LEVEL

THIS MAP COMPLIES WITH NATIONAL MAP ACCURACY STANDARDS
FOR SALE BY U.S. GEOLOGICAL SURVEY, WASHINGTON
AND VIRGINIA DIVISION OF MINERAL RESOURCES, CHARLOTTE
A FOLDER DESCRIBING TOPOGRAPHIC MAPS AND SYMBOLS IS AVAILABLE



CONTOUR INTERVAL 10 FEET
DATUM IS MEAN SEA LEVEL

1°36'
29 MILS

1/2 MAGNETIC NORTH
CENTER OF SHEET

THIS MAP COMPLIES WITH NATIONAL MAP ACCURACY STANDARDS
FOR SALE BY U. S. GEOLOGICAL SURVEY, WASHINGTON, D. C. 20242
AND VIRGINIA DIVISION OF MINERAL RESOURCES, CHARLOTTESVILLE, VIRGINIA 22903
A FOLDER DESCRIBING TOPOGRAPHIC MAPS AND SYMBOLS IS AVAILABLE ON REQUEST

Revisions shown
Commonwealth of
taken 1972