

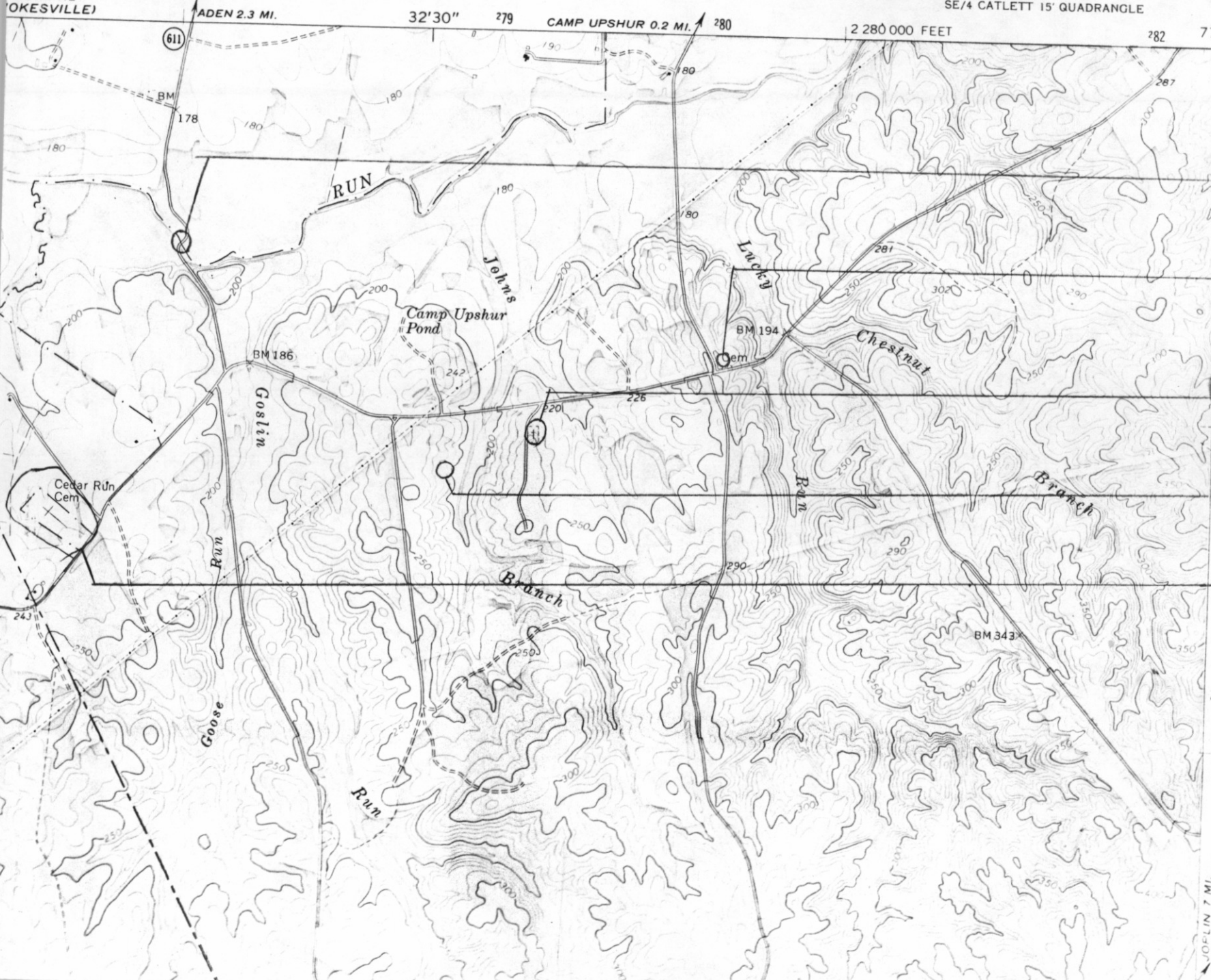
DEPARTMENT OF VIRGINIA
MINERAL RESOURCES
SURVEY, STATE GEOLOGIST
5461 11 NE
(NOKESVILLE)

SEE NOKESVILLE QUAD.

SOMERVILLE QUADRANGLE
VIRGINIA

7.5 MINUTE SERIES (TOPOGRAPHIC)
SE/4 CATLETT 15' QUADRANGLE

5561 11 NW
(INDEPENDENT HILL)



Cedar Run
Bridge 76-71

4277
Lowe Cemetery
76-55

Bridwell Cemetery
76-50

4276
Bridwell-Holmes
Cemetery 76-51

Cedar Run
Cemetery 76-5

JOELIN 7 MI.