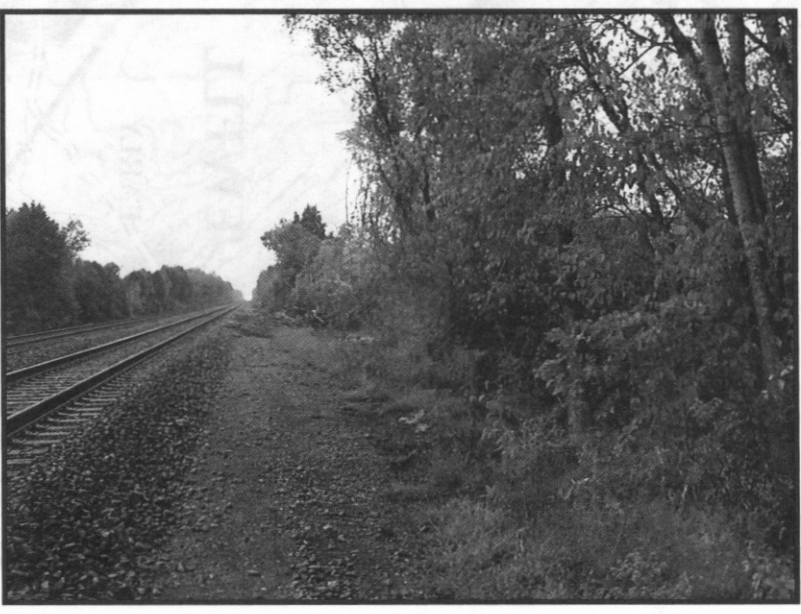
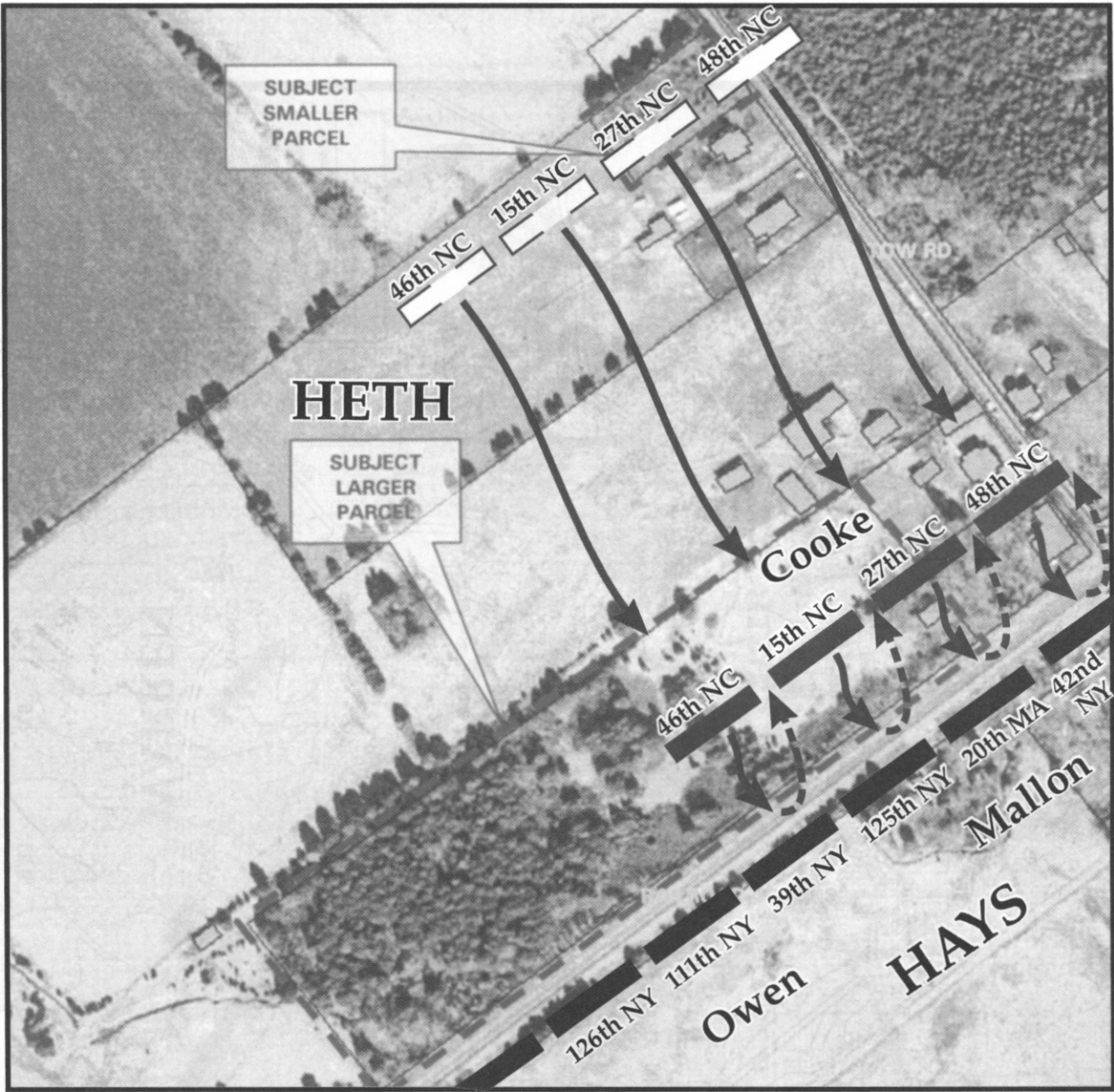


HISTORIC SITE FILE: BRISTOE STATION BATTLEFIELD  
 PRINCE WILLIAM PUBLIC LIBRARY SYSTEM  
 RELIC/Bull Run Reg Lib Manassas, VA  
 Rec'd July 31, 2003



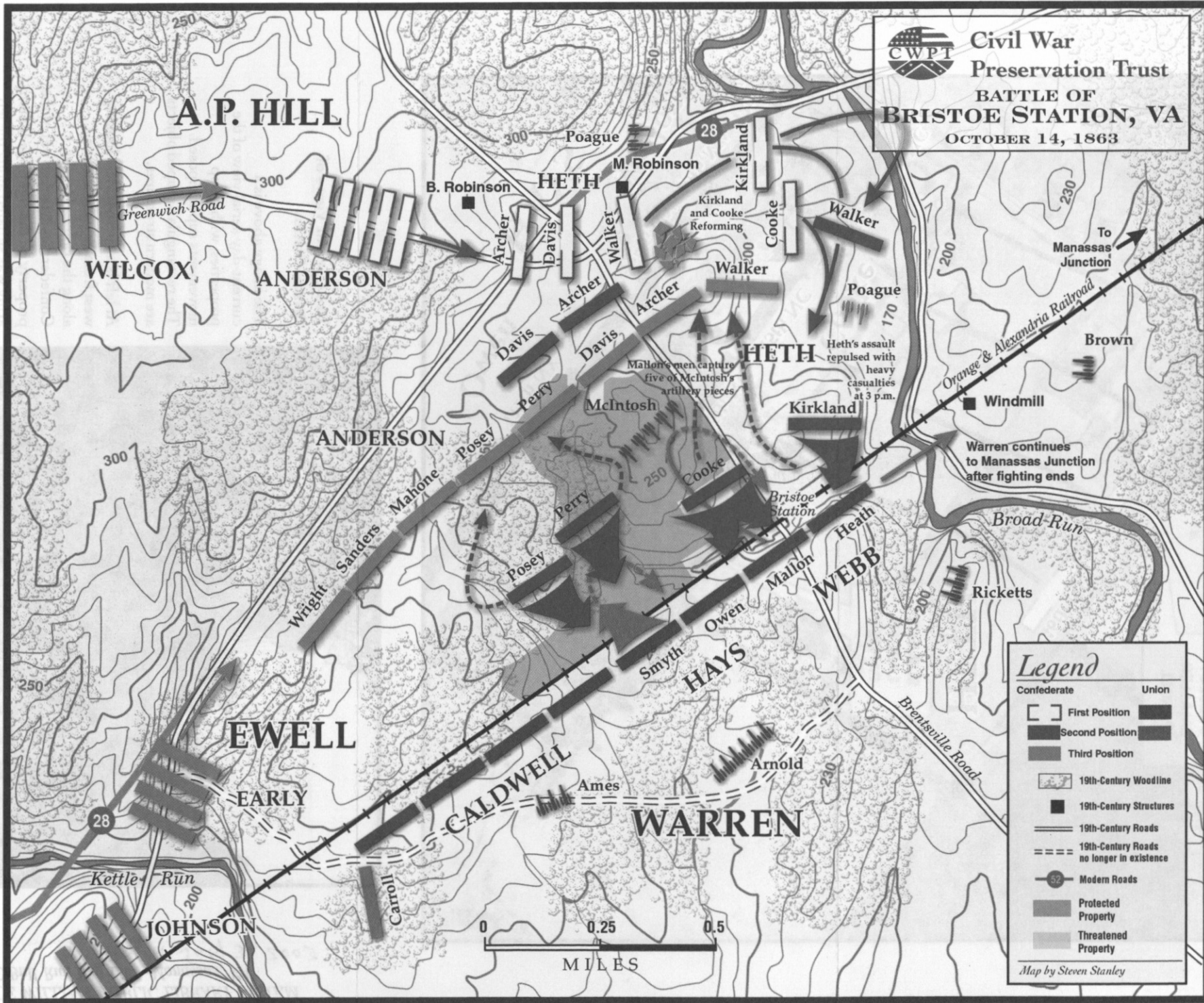
**Two Current Views of Bristoe Station**

The image above is a current-day aerial view of the properties, with troop movements superimposed. The rectangular-shaped objects are modern structures.

At left is a current view looking west from Bristoe Station along the railroad tracks. Confederates attacked out of the property on the right, the Union army was situated along the left side of the railroad embankment.



Civil War  
 Preservation Trust  
**BATTLE OF  
 BRISTOE STATION, VA**  
 OCTOBER 14, 1863



**Legend**

Confederate	Union
[Light Gray Box]	[Dark Gray Box]
[Medium Gray Box]	[Medium-Dark Gray Box]
[Dark Gray Box]	[Darkest Gray Box]
[Stippled Area]	[Stippled Area]
[Solid Black Square]	[Solid Black Square]
[Solid Line]	[Solid Line]
[Dashed Line]	[Dashed Line]
[Circle with 28]	[Circle with 28]
[Dark Gray Box]	[Dark Gray Box]
[Light Gray Box]	[Light Gray Box]

Map by Steven Stanley

size of 11x14 in. color print \$19.95

VETIC  
 BRING  
 HISTORIC ALL THE