

THE MATHEMATICS OF THIS EDITION

Papers Placed End to End
Would Reach More Than
Half the Distance to
Washington.

There are, perhaps, few of our readers who have an adequate conception as to the quantity of material and labor required to produce the mammoth edition of THE JOURNAL which goes forth from our press today to 5,000 homes and which will be read by at least 25,000 people.

For the edification of the skeptical, we have made the following estimate based on a careful examination of details:

One and a quarter tons of newsprint, at a cost of three cents per pound or \$75, was required.

It required approximately, 40 hours of press work for the 50,000 impressions.

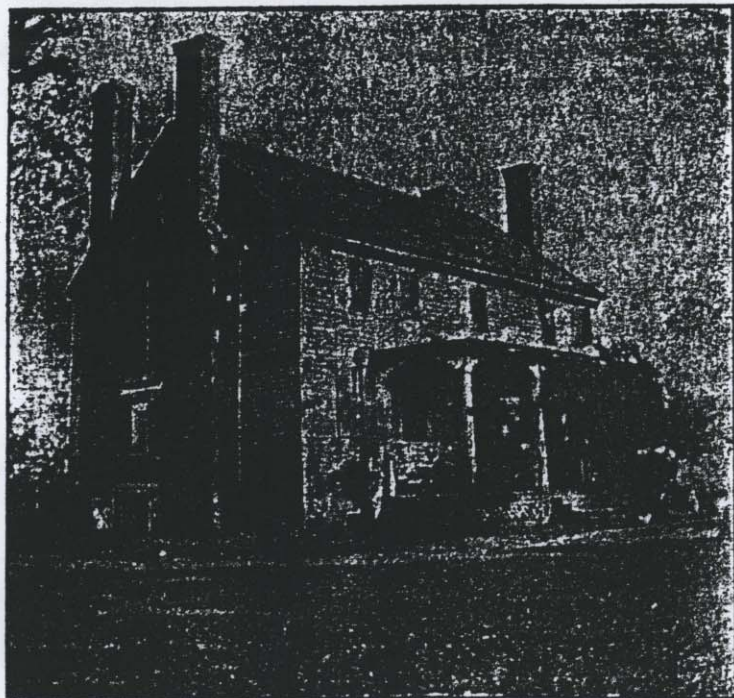
Two hundred and forty columns, of twenty inches in length or, exactly 400 linear feet of matter was used.

The superficial measurement of the paper used was 341,000,000 square inches, or 236,805.55 square feet, or 26,311.72 square yards.

If the sheets of paper used in this edition—which is exactly five times the size of our regular edition—were pasted together in one continuous sheet it would reach a distance of 17,361 miles or a little more than one-half the distance from Manassas to the National capital.

If the sheets, each measuring 31x44 inches and containing 1

"EFFINGHAM"—Old Colonial Harrison Home.



The old colonial Harrison home, built by English convicts, with material brought by boat to Dumfries, from England. It is part of the original Harrison grant from King George III; was owned at one time by the Alexanders, but bought back by Mr. Allen Harrison about 1830 and has been in same family until recently sold by last owner, Wm. J. Green, a grandson. The house is a dear, sweet, old Colonial Home. The rooms with panneling, and beautiful carving in the immense hall, which runs through the center of the house, add to the general attractiveness of the place. All the mantels are very high and of ancient design. The house and surrounding grounds are well preserved, with a large lawn in front, and a terraced garden in the rear—three beautiful falls from house to orchard—being the old plan, and it has always been maintained.

you, but they are, nevertheless, absolutely correct.

The above figures apply to the five sections, and do not include the cover, which was printed after the above article was placed in type.

Soldiers Bones Unearthed.

While some boys were searching for war relics in the vicinity

Eastern's Team Makes Record.

This season the Eastern baseball team has made a phenomenal record. More than a dozen games have been played, without a single defeat, and the team will add more laurels on the diamond before the season closes. Some of the most notable college teams of the North and South have been

INSURANCE FIRM MAKES RECORD

Karl Austin, Youngest Agent
in Manassas, Has Built
Up Remarkable
Business.

Although the youngest insurance agency in Manassas, Karl J. Austin has developed a volume of business which would be a credit to much older firms.

Having started in the insurance business May 2, 1910, Mr. Austin has just passed the first milestone in his insurance career and it is a pleasure for THE JOURNAL to take this notice of his phenomenal success.

Carrying partial insurance in the Prince William Hotel, in the Aachen & Munich Company, of Germany, this was the first loss paid by Mr. Austin, and also the first insurance money received by the owner of the hotel.

In the recent Lipscomb building fire, Mr. Austin's agency experienced two small losses, which were promptly and satisfactorily settled.

The companies represented here by Mr. Austin are all old line organizations which require personal inspection of all risks, and are recognized as the best firms in existence, as they show a material growth of business each succeeding year.

Mr. Austin offers service in companies having from \$1,000,000 to \$5,000,000 surplus and will call and inspect your premises, and write your policies at less cost

Probey's Special \$50

The Handicraft
Strongest, Most
Up-to-Date Buggy
on the Market.



Storm Apron, Reinforced Shafts, Patent
Body Black, Gear Green or Carmine, Ends
PROBEY CARRIAGE CO.

MOTO

It means a LOW AFTER-COST quickly to business in the mornin' work.

A LOW AFTER-COST CAR i rest and recreation, make calls, s she may drive you to and from station.

It means a LOW AFTER-CO go to school, on errands, etc. A a Motorette.

With it the old hindrance to maintenance and operation—is a cycle.

