

Egypt 8-20

Barns or outbldgs.?

springhouse ~~now~~ behind greenhouse?

Root cells incorporated in present greenhouse

walls 22" thick

2 layers of rock w 1 center filled w/mud.

~~Site~~ Kitchen may have been where present brick adtr. is now.  
2-st frame adtr or house built c1910.

Summer kitchen may have been incorporated in  
the old adtr. brick fireplace w/ wooden lintel.

Bricks from F.P. saved + reconstructed. for k. in NEW ADTR.

repointed mortar where necessary  
~~smear wall sand blasted.~~

work.  
mid-60s  
adtr. done 1965.

Interior - plaster removed.

trim copied + replaced

mantels + stair rail stripped + refinished.

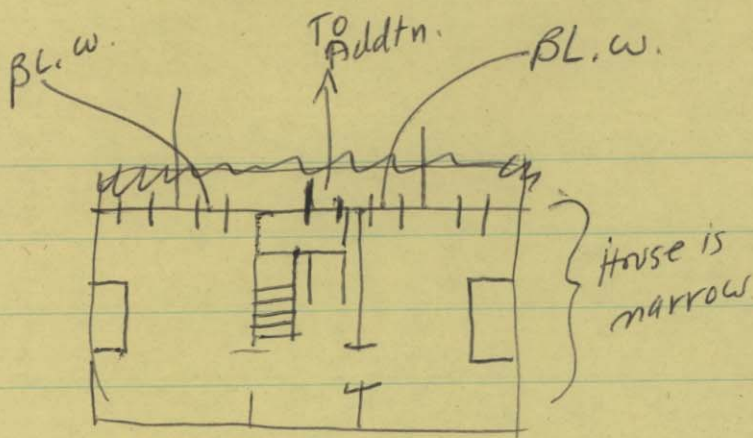
on one wall, stone exposed and mantel removed.

End wall ext. completely cleaned any pictures?

~~sand blasted.~~

LOU DOWN  
RESIDENT  
HAS PHOTOS.

Egypt int.  
Faces West?



sq flattened oval-profile  
walnut rail.  
newels are rough  
square-profile waln.  
posts.

Repro 6-panel moulded doors  
11 wide  
architrave door +  
window trim.

square profile bbs.  
narrow pine stairs  
fairly steep.

Replacement  $\frac{1}{6}$  thermal pane  
sliding sash windows

Repro crown moulding. + chair rail in sitting room.

Floors - some are old pine fairly wide;

some narrow pine

floor in den? is laid out on top of old floor.

~~Crown moulding~~

Interior walls were gutted, all w/ plaster  
removed, woodwork removed + discarded

Mantel in 1st floor south room. is a moulded shelf  
a cutout shaped frieze, with a slight bulge  
or console in it, two bulging ~~pillars~~ columns  
on blocks support the shelf. Atop <sup>each</sup> the columns  
~~are~~ is a block with concentric circles.

Present owners installed cabinets or bookcases  
acide each fireplace.

Mantel in 1st fl. north room has been  
removed. The stone chimney exposed  
and the fireplace rebuilt?

Two other mantels in upstairs <sup>bed</sup> rooms  
but not outstanding. Fireplace in  
2d fl. north room not a working F.P.

Egypt,  
8-20

2 story stone 5 bays across by 2 bays deep.  
stone is gray sandstone? or bluestone (flinty)  
rubble with larger stones at the corners.

2 interior end chimneys.

stone is mortared w/ portland cement.

large stone lintel over windows + probably door  
windows are 6/6 repl. sash. w/ storm sash.

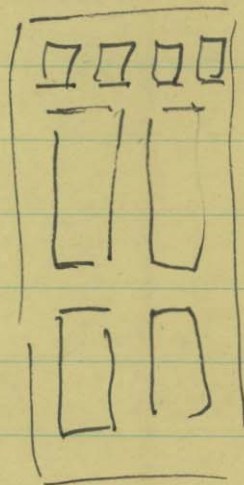
ext. window trim cor. w/ alum siding.

Front door is a broken pediment surround.

reproduction Georgian doorway w/ fluted engaged  
pilasters. Front door is a 4-panel +

moulded door w/ 4 small  
glass lights in upper portion

sign of a gable roofed one-story  
porch on front



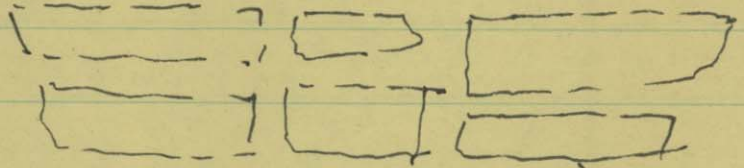
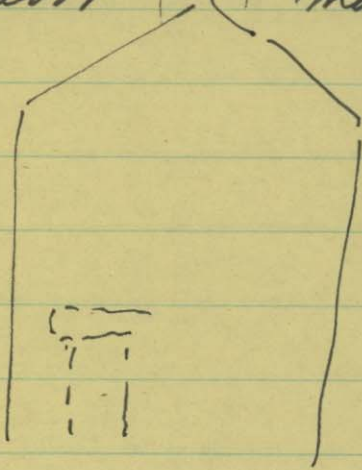
two story columned portico on front. plain round  
flagstone porch.

column  
pedimented gable

Egypt 8-20

main house has box cornice gable returns\*  
chimney windows in south end only.

Door | may have been blocked on north  
end - Keved lintel

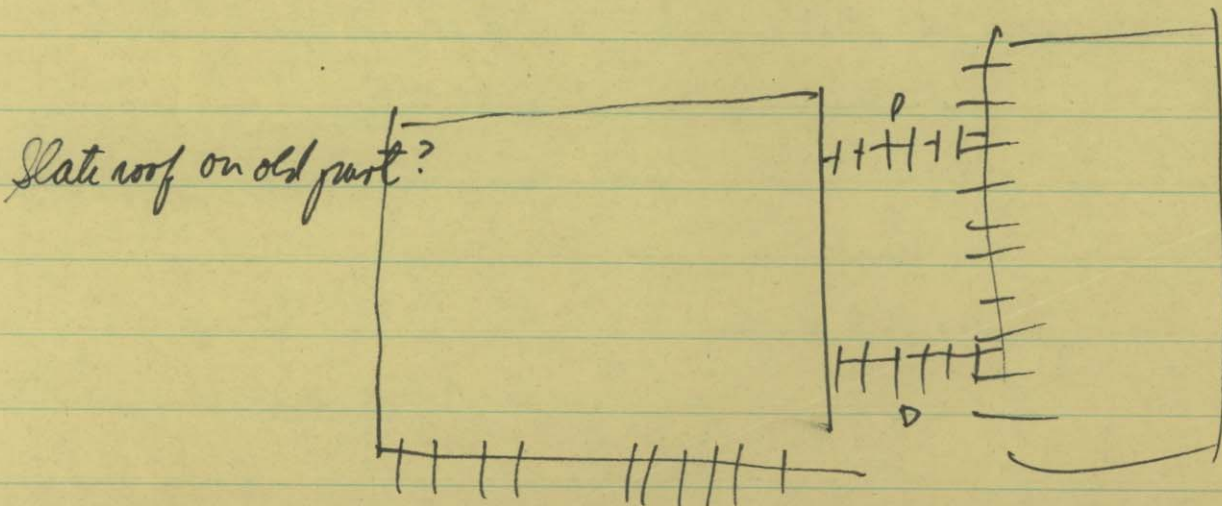


Filled in below  
with some  
red sandstone,  
and other rubble  
stone.

grayer-  
stone;  
chisel marks  
present.

steep narrow strip of moulding present  
between frieze and kofit.  
moulding on bargeboards.

two story, 6 bays by 2 bays, <sup>brick</sup> addition on  
rear connected to older section by  
a 2-story sunroom or conservatory.



Slate roof on old part?

Assessm<sup>✓</sup> 7/29

Egypt.

2705 Logmill Rd.

~~163-01-197~~

~~87-8~~ check.

← 162-1-1

Charles H. & Celia W. Coe

2705 Logmill Rd.

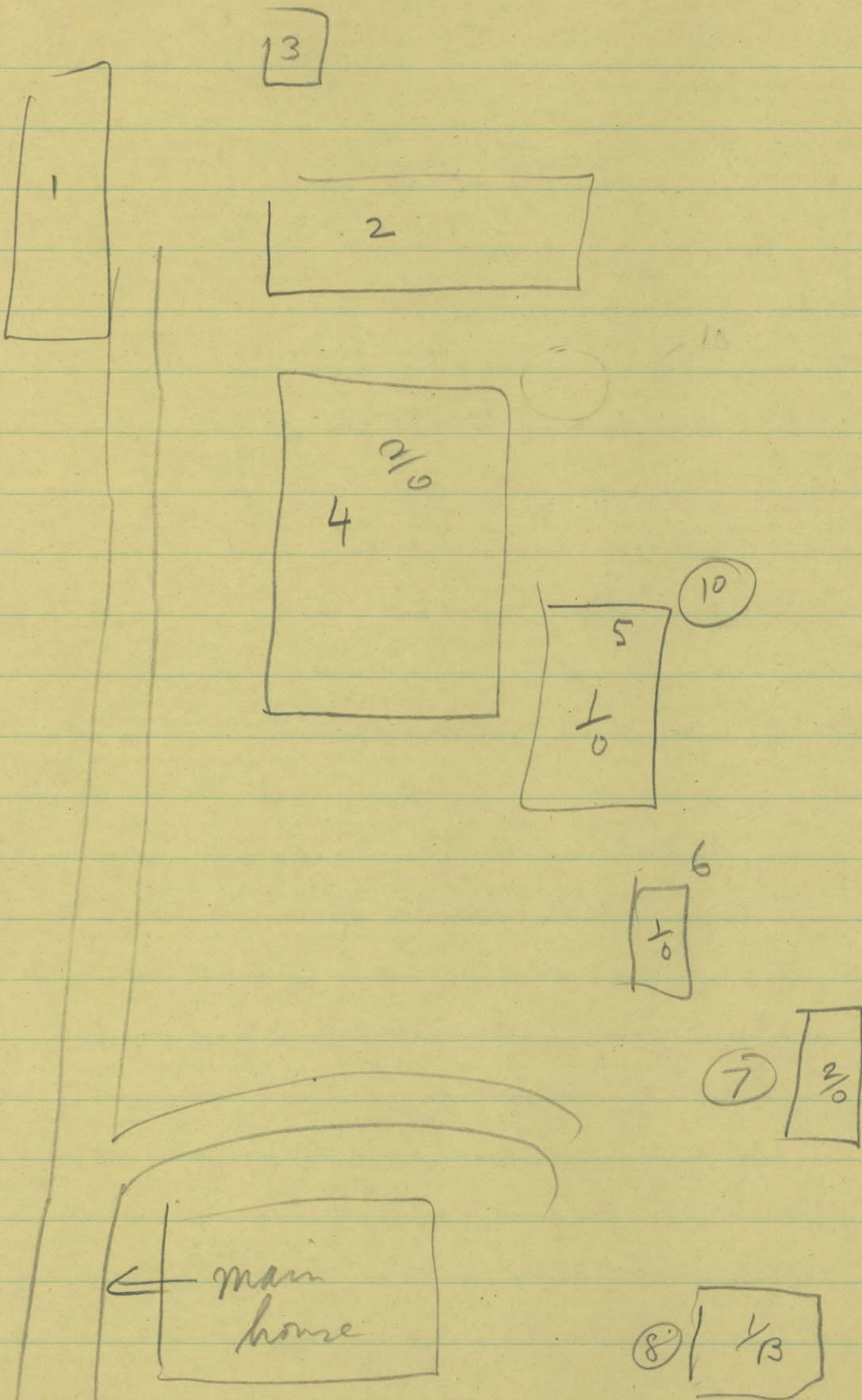
250 acres

320-546

23,860 land

31,840 bldg.

Contact owner



3

1

2

4  
2/0

10

5  
1/0

6  
1/0

7  
2/0

← main house

8  
1/3

Egypt.

162-01-1

2705 Log mill Rd.

2 st. Brick & stone  
dwll. plaster walls  
comp shingle roof.

14 rooms 6 B.R.

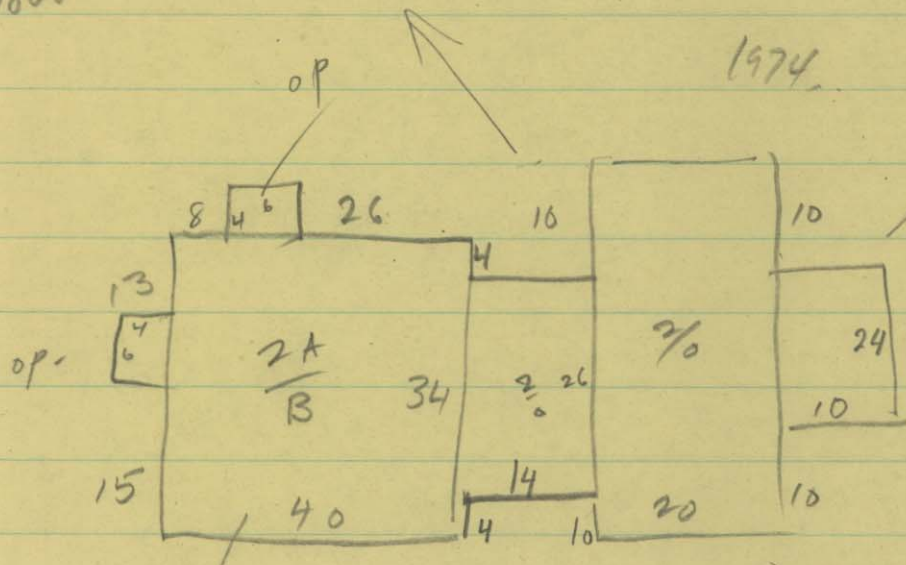
1/2 basement  
3 1/2 baths.

8 Fireplaces  
6 working

2 FP.

"1800"

1974



ad brick  
c. 1940

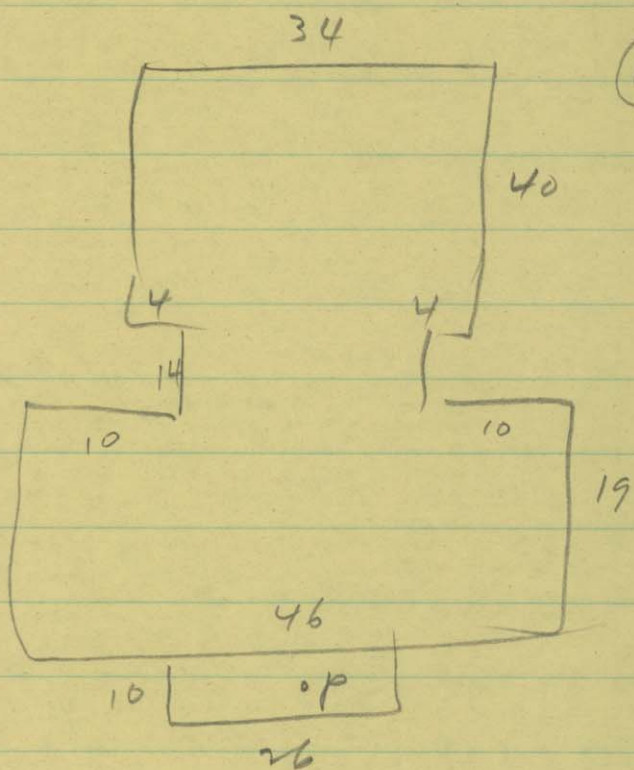
2 st. op.

- ① machine shed 61x29
- 2 open stable 84x16
- 3 corn crib
- 4 barn 62x36
- 5 Dairy barn 68x34
- 6 storage 32x11
- 7 ch. coop
- 8 Storage 14x12
- 9 rented home
- 10 silo

13	
15	40
6	14
34	20
	10
	84



Charles H. + Celia W. Coe. DB 320 p. 546  
in 1964.



1970

7 Fireplaces.

Slate roof.