

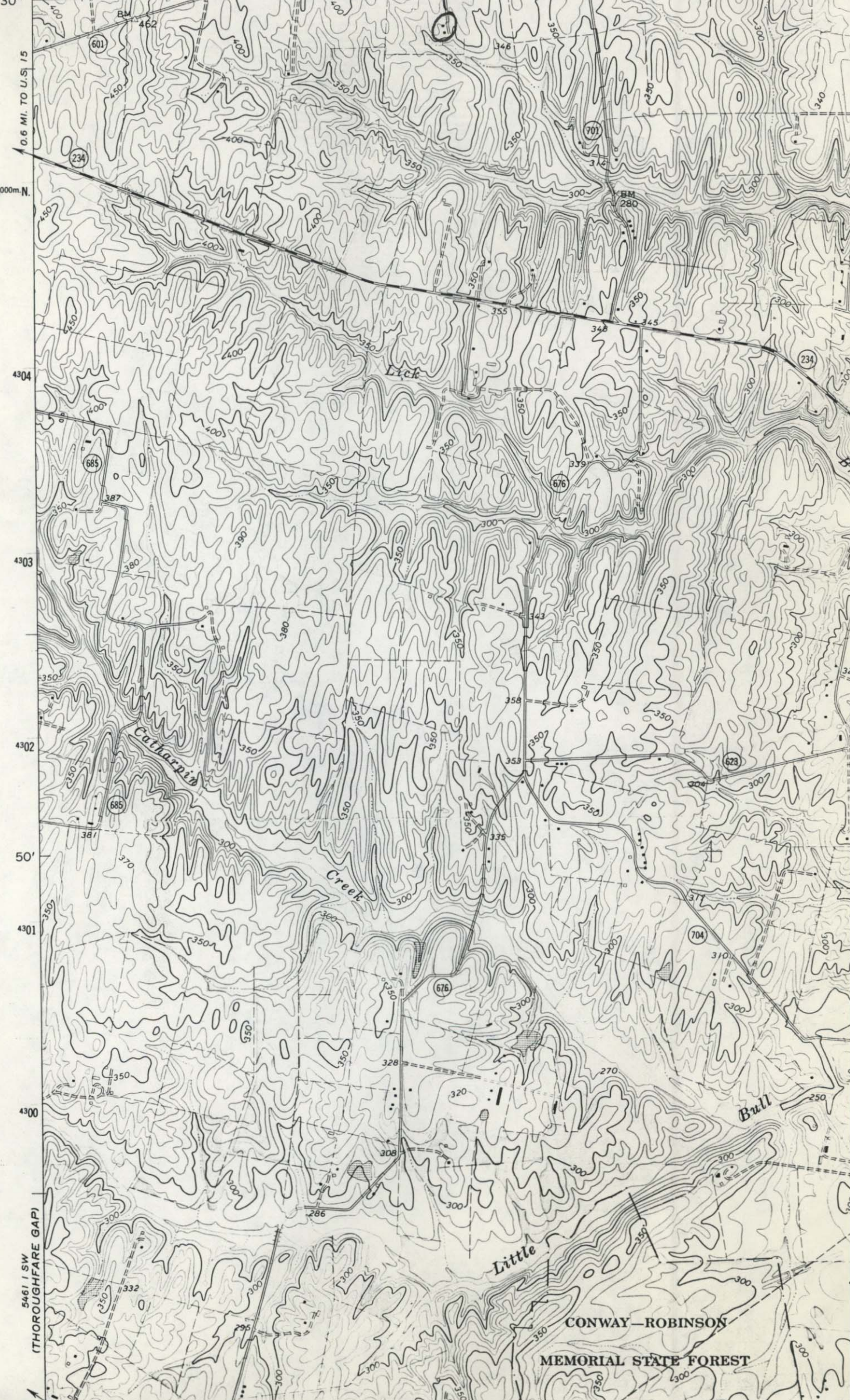
Gainesville Quad.

UNITED STATES  
DEPARTMENT OF THE INTERIOR  
GEOLOGICAL SURVEY

Ellen's Veil (Hottel)

5461 (NW)  
(MIDDLEBURG)

77° 37' 30" 273000m E. 274 275 35' 276  
38° 52' 30"



0.6 MI. TO U.S. 15

4305000m N.

4304

4303

4302

50'

4301

4300

5461 (SW)  
(THOROUGHFARE GAP)

CONWAY-ROBINSON  
MEMORIAL STATE FOREST