

Journal Message March 9, 1967.

People, Places, and Things

Evergreen Mansion Offers A Picture Of The Past

HISTORIC RELIC

By Gladys Bushong
Virginia is a treasure house of beautiful old homes, churches, shrines and museums with Prince William County providing a bountiful share of many.

The mansion and farm of Evergreen, located in the northern section of Prince William County is magnificent. The mansion is among the best remaining examples around which centered highly developed social life of the South in the eighteenth century.

The plantation of Evergreen is a part of "King Carter's" tract of 41,660 acres, which he had patented in the names of two sons and five grandsons. Carter Burwell was the grandson who was the devisee of Evergreen Farm. Carter's mother, (the oldest daughter of "King Carter") married Carter Burwell Sr. Naturally, in time, the son of Carter, (Nathaniel Burwell, who lived at Carter Hall) inherited a sizeable acreage of the original patent.

Then later, another part of this plantation was given to Nathaniel's sister, Mary, who had married Edmund Berkeley IV. Accordingly, her son, Lewis, came in for a large tract. Still later, the Evergreen estate was inherited by Lewis' son, Colonel Edmund Berkeley. This same

of the historical places which have been donated to The National Trust For Historic Preservation. Being erected in 1827, it is located in the foothills of the Bull Run mountains, surrounded by a natural setting of flowering dogwood and red bud, thus making a captivating picture in the springtime. Likewise, during the autumnal season the beauty of the place is just as enchanting.

This old home is well secluded, yet its retreat is closely allied with everyday living. It is within close proximity to the Nation's Capital. Dulles Airport, which is rarely closed by weather conditions is only a short drive, as well as Interstate 66, Routes 15 and 50, all accessible by hard surfaced roads.

The rooms, distinguished by lofty ceilings, are spacious and bright, many with huge fireplaces, handsomely carved mantels and cornices. One of the admirable features of this lovely home, is the privacy of the library, located on the second floor. The soft tones of the walnut paneling add to the comfort of one engrossed in research or reading.

An object of admiration, too, is the wide paneled hall extending through the house, with en-

room; also the large breakfast and reception rooms being accessible, thus making the ease of entertainment an enjoyment. Undoubtedly, this mansion was planned with great care and much forethought.

The woodwork and the pine floors are in excellent condition which appear to be the original. Wings constructed of stone were added to each end of the house about 1938 and 1943. The arched windows on the ground floor of these additions are enhanced by attractive fan lights.

A place of real charm is the solarium. Here a large fireplace is kept in constant use, thus adding comfort and pleasure to guests. Too, the view from the solarium in the West wing is idealistic. There is a uniform and tidy walkway, lined by boxwoods, leading to the swimming pool.

Several other dwellings on this old historic place house those who may be employed on and about the premises.

Some years ago, a log cabin stood near the entrance to Evergreen. History relates it as being one of many which lined the approach to this plantation, but according to recent data and information, this cabin was moved to the rear of it.

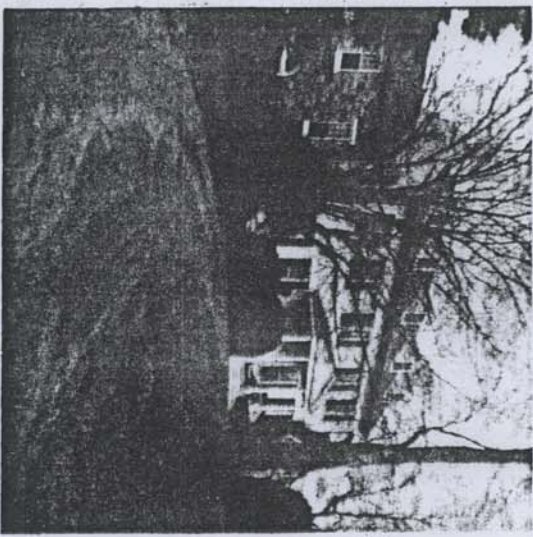
"Jenny House," which was used in the early 1800's as a spinning house. Incidentally, it has been explained that the English inventor by the name of Har-

greaves invented the "spinning Jenny" (named for his wife) which made possible spinning by power looms. Going about on the spacious

lawn, you will find it adorned with large English boxwoods shrubs and flowering plants. There is a formal boxwood garden which lends a sense of dignity to the environment.

Evidently, the owner of this attractive place, gave much consideration to the pleasure of those living there. Tennis courts, a swimming pool, a well kept lawn, stable for riding horses, with groom quarters adjoining, are all kept in good condition.

Evergreen is a charming place; it is almost impossible to describe the impressiveness of the exterior and the interior. It is not at all questionable in one's mind to believe that Colonel Edmund Berkeley entertained high officials and dignitaries of his day--the feast location; the expansive mansion and the certainty of their employment, all point the way in which this gentleman lived at Evergreen. Even today, the extraordinary home presents a real picture of the past. Evergreen is privately owned and is not open to the public.



EVERGREEN, the former home of Col. Edmund Berkeley, located in the northern section of Prince William County.

married Edmund Berkeley IV. Accordingly, her son, Lewis, came in for a large tract. Still later, the Evergreen estate was inherited by Lewis' son, Colonel Edmund Berkeley. This same Colonel Edmund Berkeley lived here during The War Between The States, and was Captain of the Evergreen Guards 1861.

* * *
From this point, the plantation changed ownership relatively few times--all of the owners being influential and prominent citizens of the First Families of Virginia. The house has been occupied practically the entire time, the owners participating in lavish entertaining and gallant hospitality.
Evergreen has no suggestion of cold formality, but one feels the warm and homey atmosphere of the place. The stucco-and-stone mansion, containing 22 rooms, is comparable to some

being one of many which lined the approach to this plantation, but according to recent data and information, this cabin was moved to the rear of the house. It was known as the search or reading.

An object of admiration, too, is the wide paneled hall extending through the house, with entrances to dining or banquet

105-105-105
METYS YHARBL QIBUQ MALLIM EDIRR
AV 262288NSM, dli g9R nUR IwA(1)1EIR