

$$\begin{array}{r} 63 \\ 116 \\ \hline 179 \\ 63 \\ \hline 242 \end{array}$$

$$\begin{array}{r} 239 \\ + 5 \\ \hline 244 \end{array}$$

$$\begin{array}{r} 11 \\ 27 \\ \hline 38 \end{array}$$

$$\begin{array}{r} 34 \\ 10 \\ \hline 44 \\ 108 \\ \hline 152 \end{array}$$

$$\begin{array}{r} 35 \\ 24 \\ \hline 59 \end{array}$$

$$\begin{array}{r} 22 \\ 16 \\ \hline 38 \end{array}$$

$$\begin{array}{r} 51 \\ - 19 \\ \hline 32 \end{array}$$

51' (includes 12' of wall)
arbitrarily trim w/cars.

w/6 2' x 12' x 12' x 12'

or wall at garage 12' long

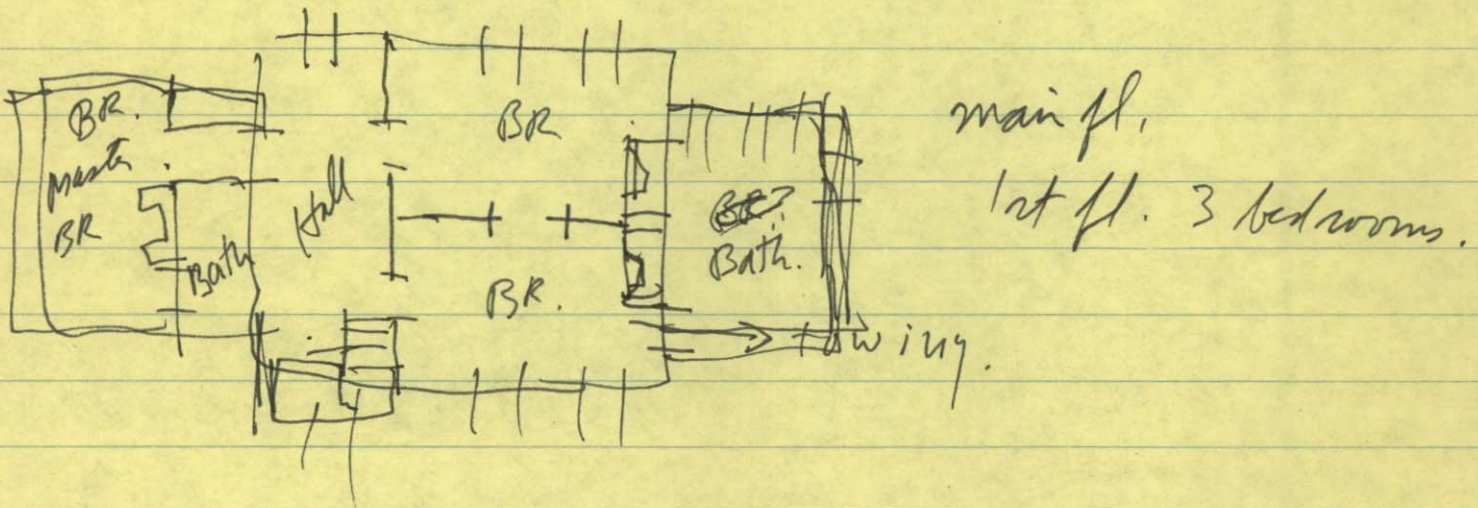
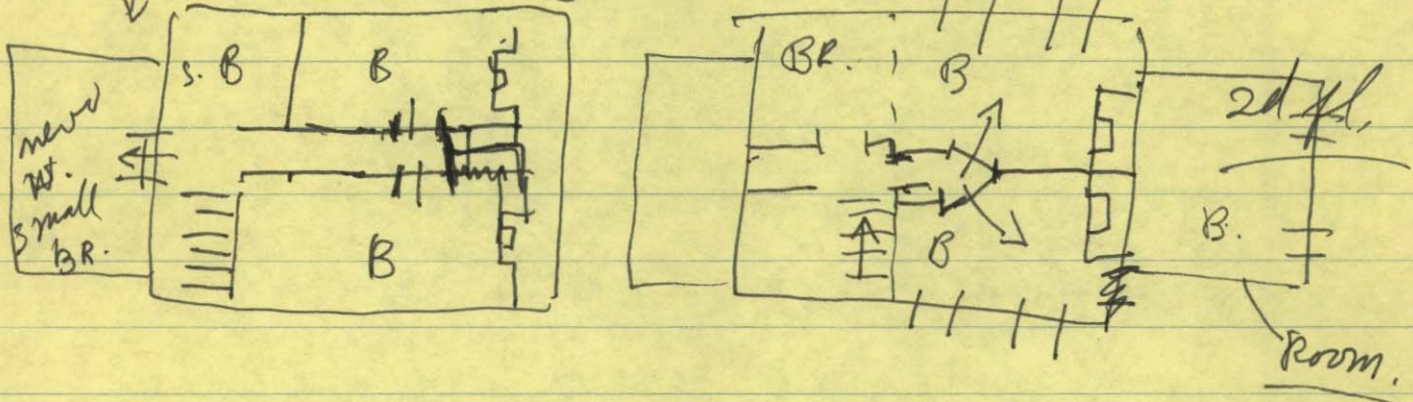
To Garage

27' long
1' at 6'
1' at 17'

mantel, paneled room

the ~~mantel~~ mantel and surround are flanked by fluted pilasters, ^{running} from floor to ceiling, each topped by a ^{carved} medallion.

On the second floor of the central core are ~~four~~ ^{five} bedrooms.



main fl.
1st fl. 3 bedrooms.

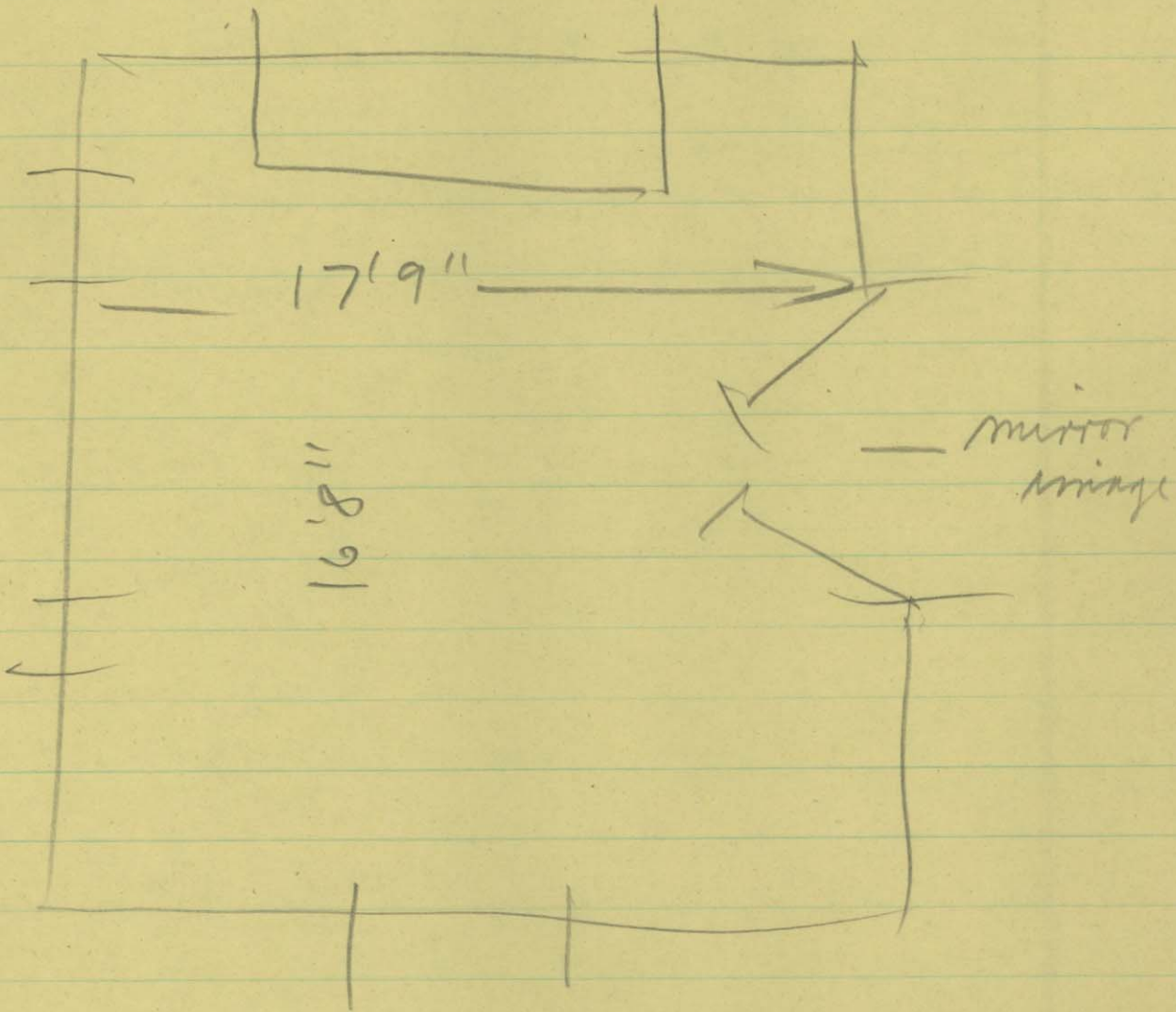
Flows pine?
c 4 1/2 - 5" wide

Bedrooms
mantel (2)
plain shelf
moulded fluted joints on blocks

trim: double doors
between

cyma moulding at ead
moulding cornice

architrave trim ??
see photo.



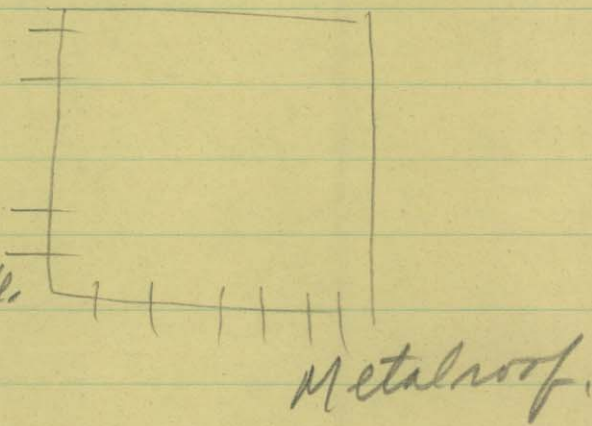
house +
50
acres

sand + lime
repaired w/ portl.

says 1844 in
core gable
1952 in new wing,

General.

3 bay, 2 stories on a high basement, central
cores to which there is an [original?] 1 1/2 stories on a
high basement wing containing a
large end fireplace and a
1 1/2-story on a high basement wing on
the east end built in 1952
containing kitchen, garage on ground fl.
a large room on the 1st floor, +
bedrooms on the top floor.



The stone is yellow or golden sandstone laid up in
carefully shaped rough courses

~~There~~

The house's front is on the north side

The main entrance [now] is in the basement.

Former front entrance where french doors + metal balcony is now.

Greek revival style

moulded cornice, pediment in gable

keystone arches over windows

raised seams mortar, but practically laid
up dry. dark shutters.

plain white trim

rather
tall
windows
on main
floor.

stone cells.

Front door - 2 vert panels.

3'6" x 6'9 1/2" 1 3/4" thick

heavy box-type lock.

repl. knob.

2 pane side lights

door frame has
single bead trim.

to Din. Rm

29'6"

35"

11'11"

to
service
rooms

to
whil

out

Hall

plain doors throughout
single-panel

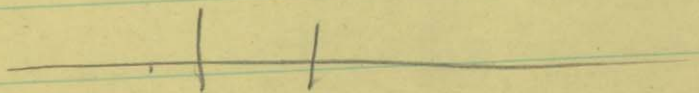
brass knobs
mortise locks.

lino cum floors (tile)

turned newel
rail rest on top of it
& terminate there
flat circular rail
circular bales, 2
per tread
straight, single fl.
open stair

treads = 10"
riser = 8 1/2"
walnut?

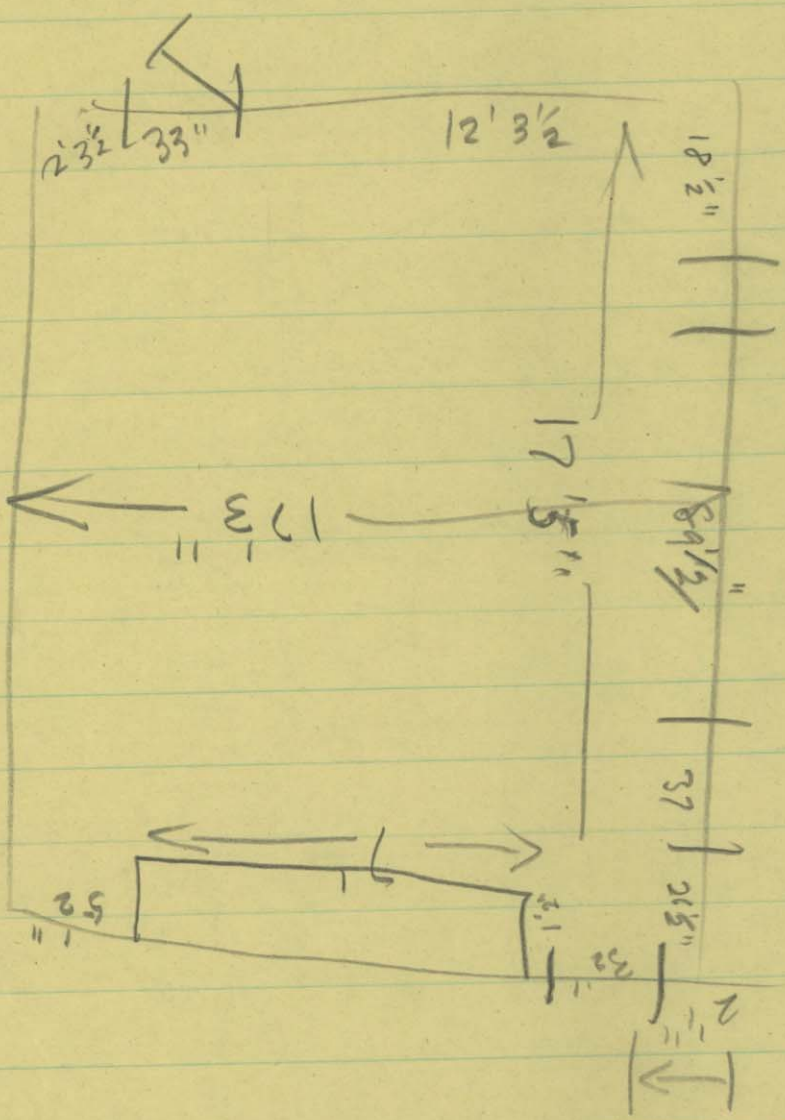
moulded
chair rail



Util room
 cement floor
 sash windows (short)

if b.p. was present,
 it been blocked,
 furnace flue is in it
 now.

walls - 24-26" thick

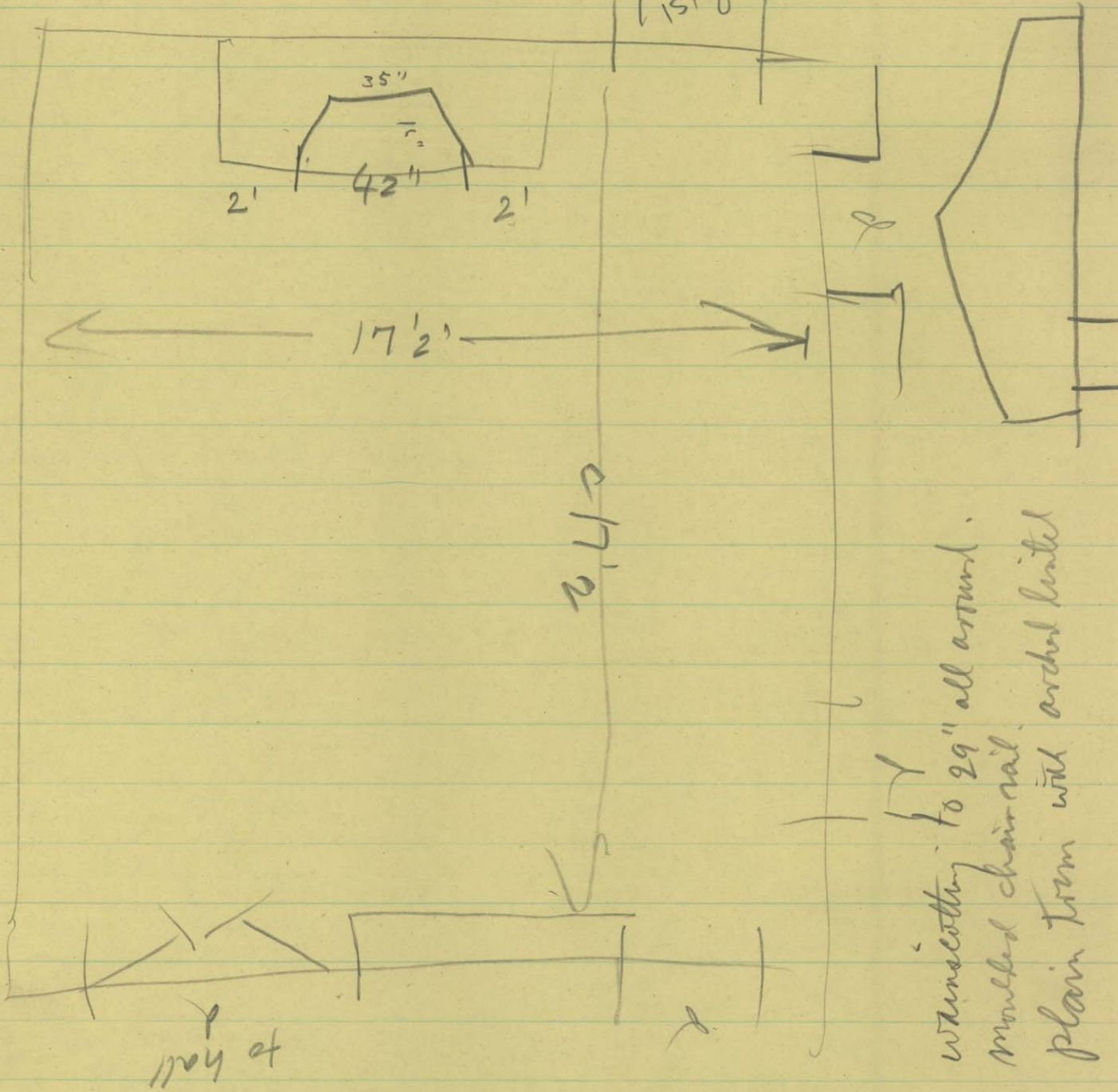


finished w/
 wallbd. + plaster
 concrete floor
 repl. doors ? windows

42" = 3'6"
 $\frac{4}{7'6"}$

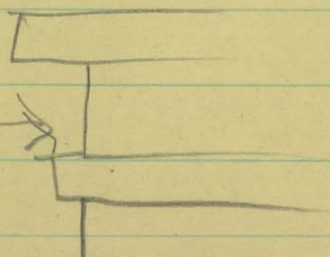
D. R.

↑ to old K
 ↓ 1st step down



$\frac{4}{2'6" = 3'0"}$

plain shelf supported by plain joints plain frieze
 the only decoration

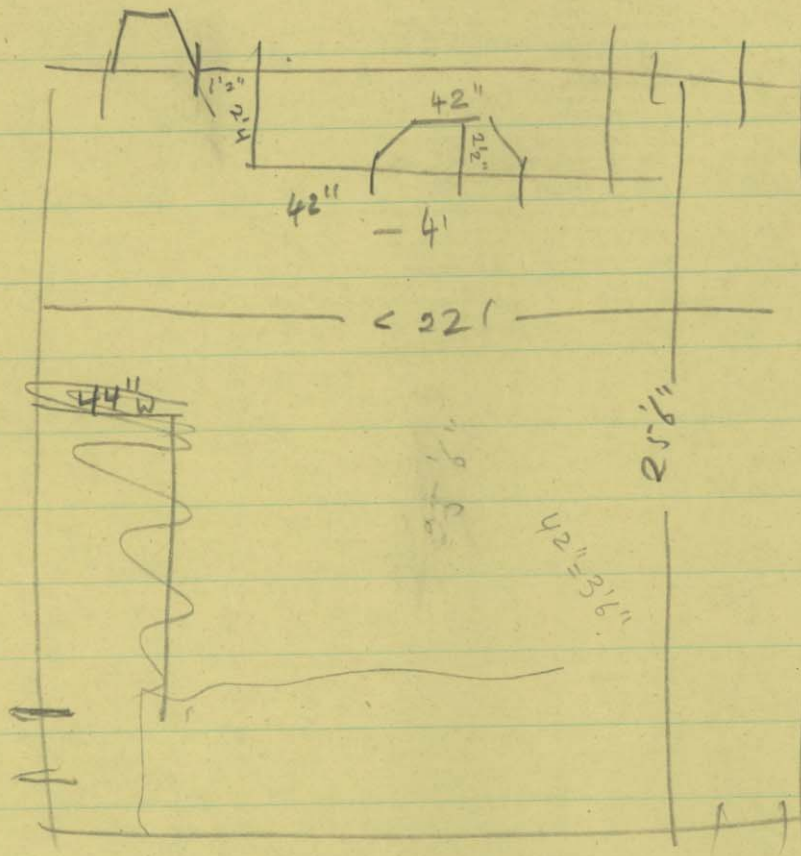


moulded cornice.

GLD K.

wooden moulded cornice
architrave trim
windows 6/6 pl. sash,
repl.
+ casement 8x8
+ 1 french door,
moulded baseboard.

err
windows = 15" deep



$3\frac{1}{2}$
 $3\frac{1}{2}$
 $\frac{4}{-}$
 $11-$

stair = Straight open flight, turned newel - slender
 turned balbs - 3 to a tread squashed elliptical rail
 Malozany? tread = 12" riser = 6 1/2"

scroll skirt trim.

pine paneling moulded w/ chair rail. c 3 1/2' up

marble tile floor

fireplace = brick-lined

architrave surround with ears.

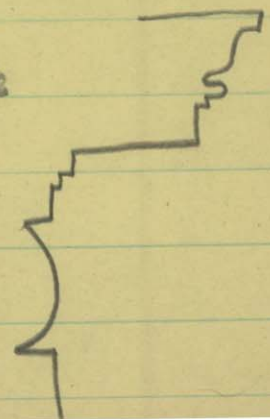
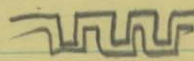
moulded shelf supported by a console

fruit motif betw. shelf + console

floor to ceiling fluted

engaged columns flank fireplace

Capped with a medallion



4 hours
to M + P,

\$ 75 mi.

old kitchen wing
trim ~~not~~ good fl.
is single beaded.

schoolhouse or guest house.

stone found

1 1/2 story frame w/ gable roof +
1-story shed roof addn.

metal roof.

plain box trim.

6/6 sash.

repl. front door w/ old lock + knob.

6-panel moulded w/ butt hinges

horiz bds. wainscoting w/ simple chair rail

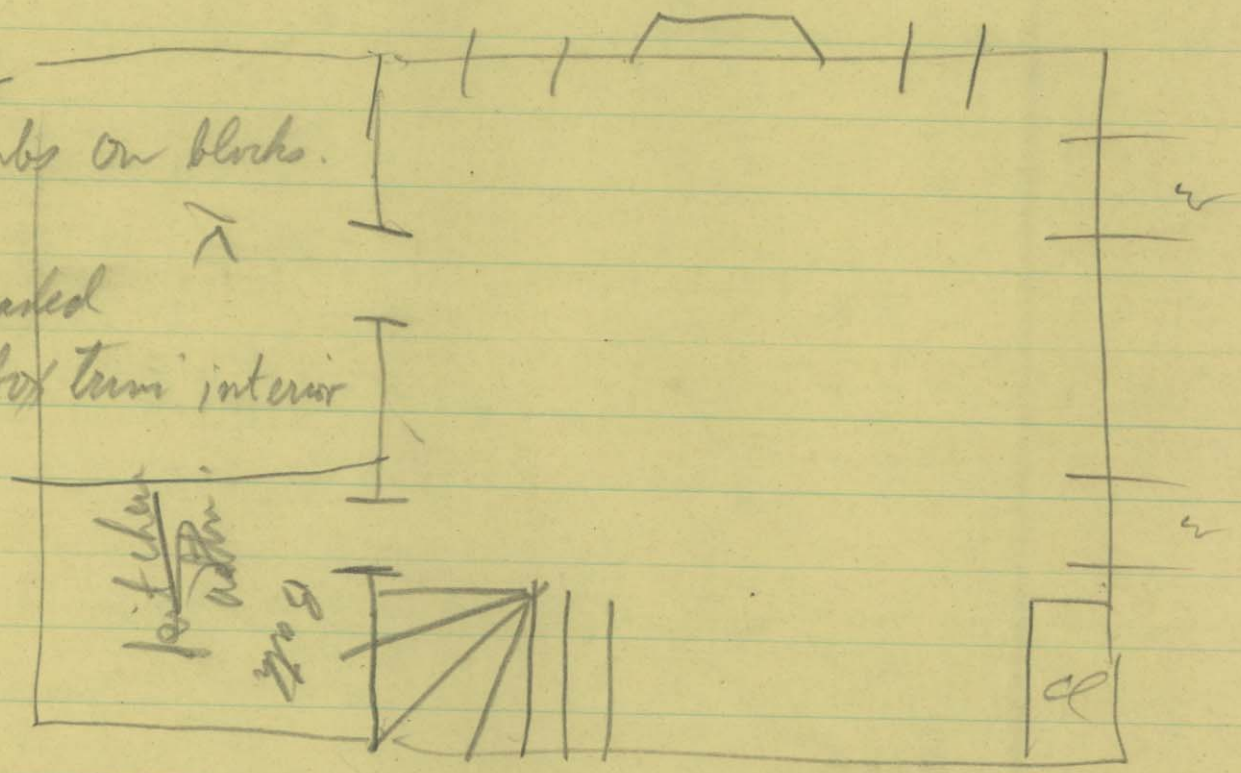
15' x 20'

plain shelf

plain jambs on blocks.

single-beaded

plain box trim interior



single attic room 2d fl.

high winding stairs

wide floor

up to 15-17" wide