

Sainsville Methodist. arch.

Porch ^{rests on concrete block and was} probably added later, and possibly ^{also} "steeple".
Both have channeled siding, while main church has plain 5"-lap weatherboards.

Windows 6/6.

1-story frame addition on west side of church built c1950, covered with 5"-lap plain ~~siding~~ siding.

There is a 1-story shed-roof concrete block addition on rear of 1950 addition.

Interior said by pastor to have been remodeled ~~restored~~ recently.

Gainesville Methodist organ. 1870's.

~~built in 1834~~

part of "Sudley ~~Parsonage~~ Circuit"

1886's

addition last 20 years

→ Buckle

1st Pastor 1879 - 1880

Sudley
Thoroughfare

PROP. Miss Summerville James 1883

donated 1 acre

DB 35-406

"adj. historic Gaines

Red Hill
cemetery."

Parsonage

1883

→ Lorenzo J. Prescott

sold 2 acres in

Gainesville to trustees.

dedicated 1886

remodeled inside few years back.

any Sunday

church + 5 acres

~~gone to~~

Fred Snook of Bristow

laid 1st stone.

5/16

GAINESVILLE UN. METH. CHURCH 76-201

PASTOR: REV. J. CHADSEY
Tel. 754-4511

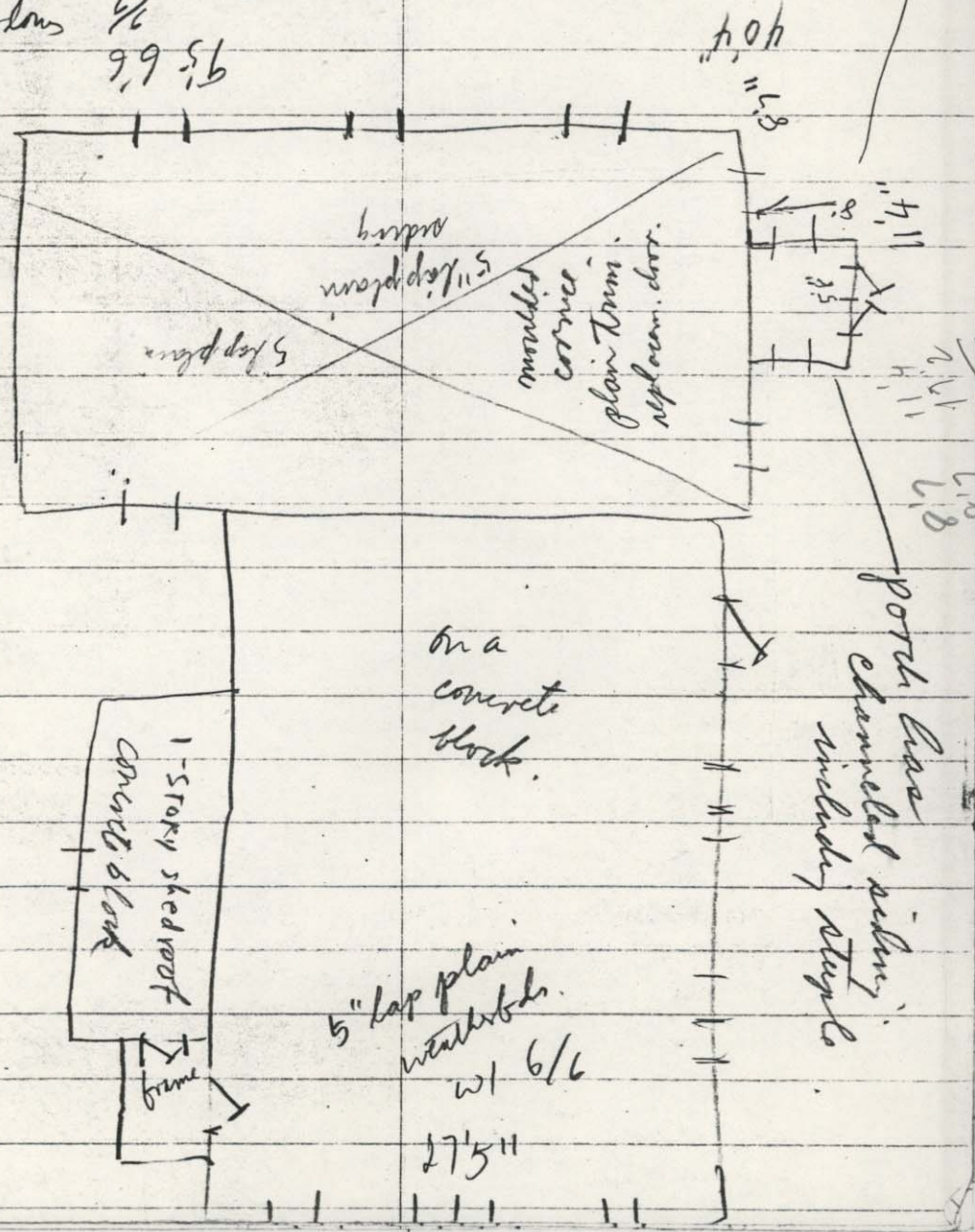
c/acre

7634 Linton Hall Rd. Gainesville

1-story, stone foundation
windows 6/6
9'9" x 5'6"

poor's
on concrete
blocks

date? 1905 with masonry additions



on a
concrete
block.

poor's
channelled siding
including steps

5" lap plain
weathereds.
w/ 6/6
27'5"