

bracketed cornice
 patterned gables
 deep eaves

c. 4 acres

Oman Fisher House
2338 Longview Dr.
Woodbridge Va.

T-shaped
2-story frame home w
central entrance
Turned newel ~~stair~~

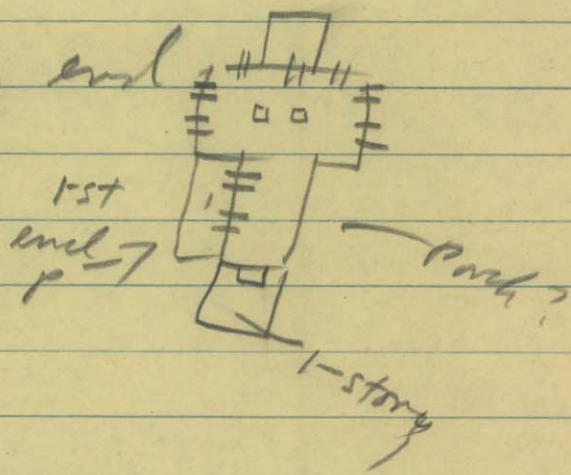
3 bays long

one-story porch on front supported w square columns.

patterned central gable w/ 2 windows.
metal cov. gable roof.

T-shaped home w 2-story end

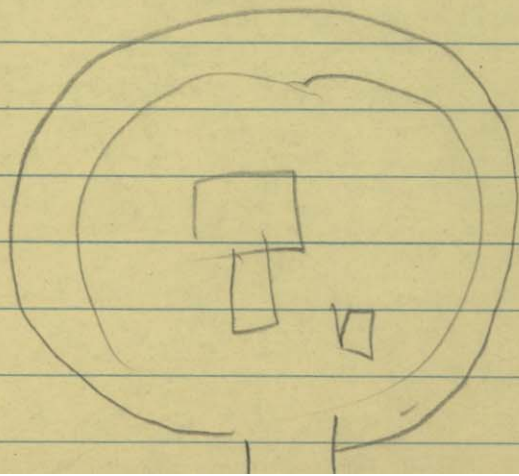
channeled siding
brackets,



windows 4

remodeled 1960.

Trunk.

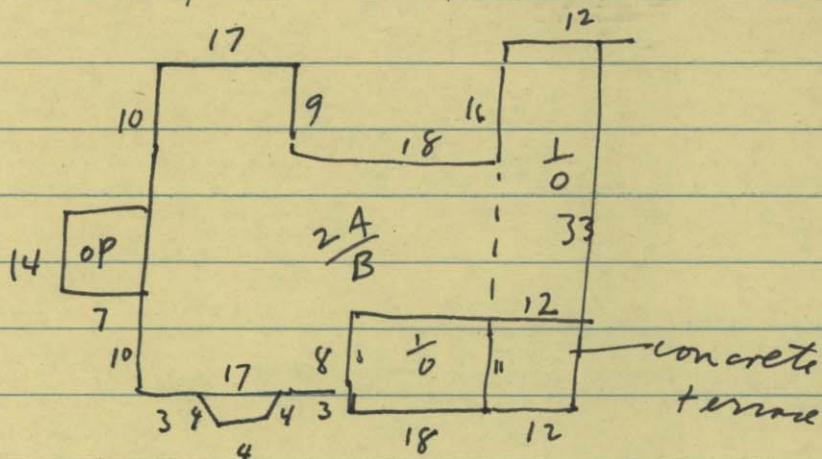


Faces east?

Fisher Home.

1890

Bi-level.



10x12 metal shed
28x30 garage
cinder block

purchase fr. Cecil D. & Irene Hylton

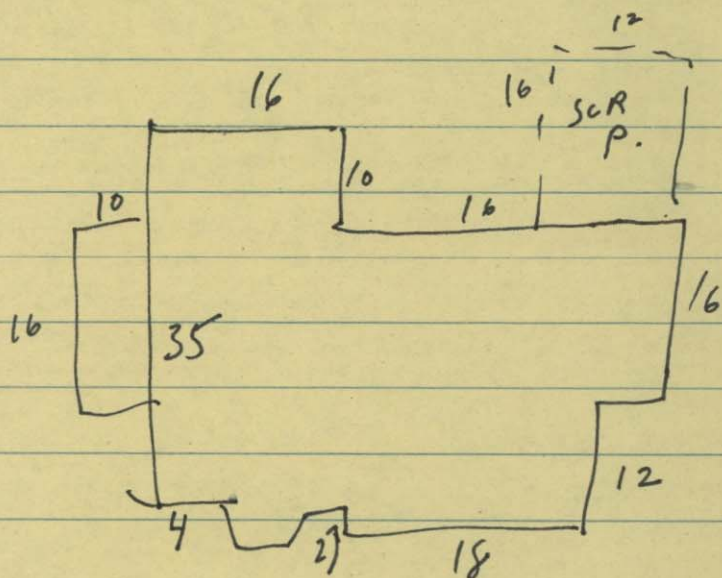
DB 333-487

10-22-64

\$19,000

Hylton ownership DB 282-p. 277 4-19-62

Parcel A. 4.5194 AC.



"85yrs old in 1979

remodeled c1964

owner's separate shed.