

illsborough

Southworth House (VA-313); exact location unknown. Brick, rectangular (five-bay front), one-and-a-half stories above raised basement, gable roof with shed dormers; center-hall plan. Built late 18th C.; demolished. 1 ext. photo (1938), 1 int. photo, basement stair (1938); 1 data page (1941).

NORFOLK

Purdy-Whittle House (Whittle House) (VA-15), 225 W. Freemason St. Brick, 40'2" (three-bay front) x 40'5", two stories, gable roof, pedimented gable-end front, two brick interior chimneys, modillion cornice, pedimented Tuscan entrance porch, two-level side porch; fine interiors. Built late 18th C.; later addition. 5 sheets (1934, including plans, elevations, sections, details); 1 ext. photo (1934); 2 data pages (1936); HABSI (1958).

Whittle House (VA-15), see *Purdy-Whittle House* (VA-15), 225 W. Freemason St., Norfolk.

NOKESVILLE VICINITY

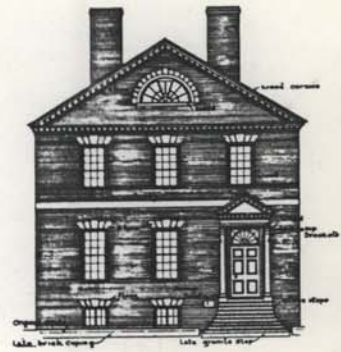
Prince William County (76)

Effingham (VA-575), .5 mi. W of Cedar Run, .4 mi. S of State Rte. 646, 1 mi. SE of intersection with State Rte. 611. Frame with clapboarding, rectangular (five-bay front), two stories, gable roof, four exterior end chimneys; center-hall plan; frame and stone outbuildings including blacksmith shop, dairy, and slave quarters. Built mid 18th C.; extensive later alterations and additions including mid 20th C. giant portico across front. 4 ext. photos, main house (1936, 1959), 9 ext. photos, outbuildings (1936), 4 int. photos, main house (1936); 2 data pages (1959).

Fleetwood (VA-275), S side of Slate Run, W side of State Rte. 611, .7 mi. S of intersection with State Rte. 653. Stone, rectangular (four-bay front), two stories, gable roof, three exterior end chimneys, modillion cornice; side-hall plan; flanking one-story wings, log with clapboarding. E wing built late 18th C.; main section and office wing built early 19th C. 4 ext. photos (1936); HABSI (1959).

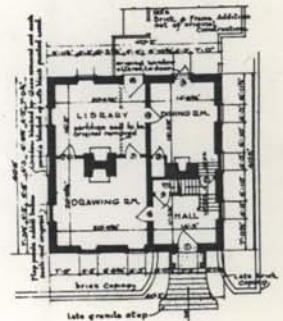
Green
76-9

House (VA-825), .1 mi. W of Cedar Run, N side of State Rte. 646, 1.6 mi. SE of intersection with State Rte. 611. Frame with clapboarding, rectangular (three-bay front), one story, gable roof, two exterior end chimneys; two-room plan; rear ell. Built late 18th C. or early 19th C.; later additions and alterations including dormer windows. 1 ext. photo (1936).



NORTH ELEVATION

Purdy-Whittle House



??
AKA "GREEN"
HOUSE"
in HABS
CATALOG.