

1858.

~~Two-story~~

Victorian gothic revival?

One story + rectangular brick church with brick laid in 7-course American bond. Repointed; scored mortar

Patterned corbelled cornice  
gothic (lancet) arch windows with diagonally-laid diamond square panes colored sliding sash windows.

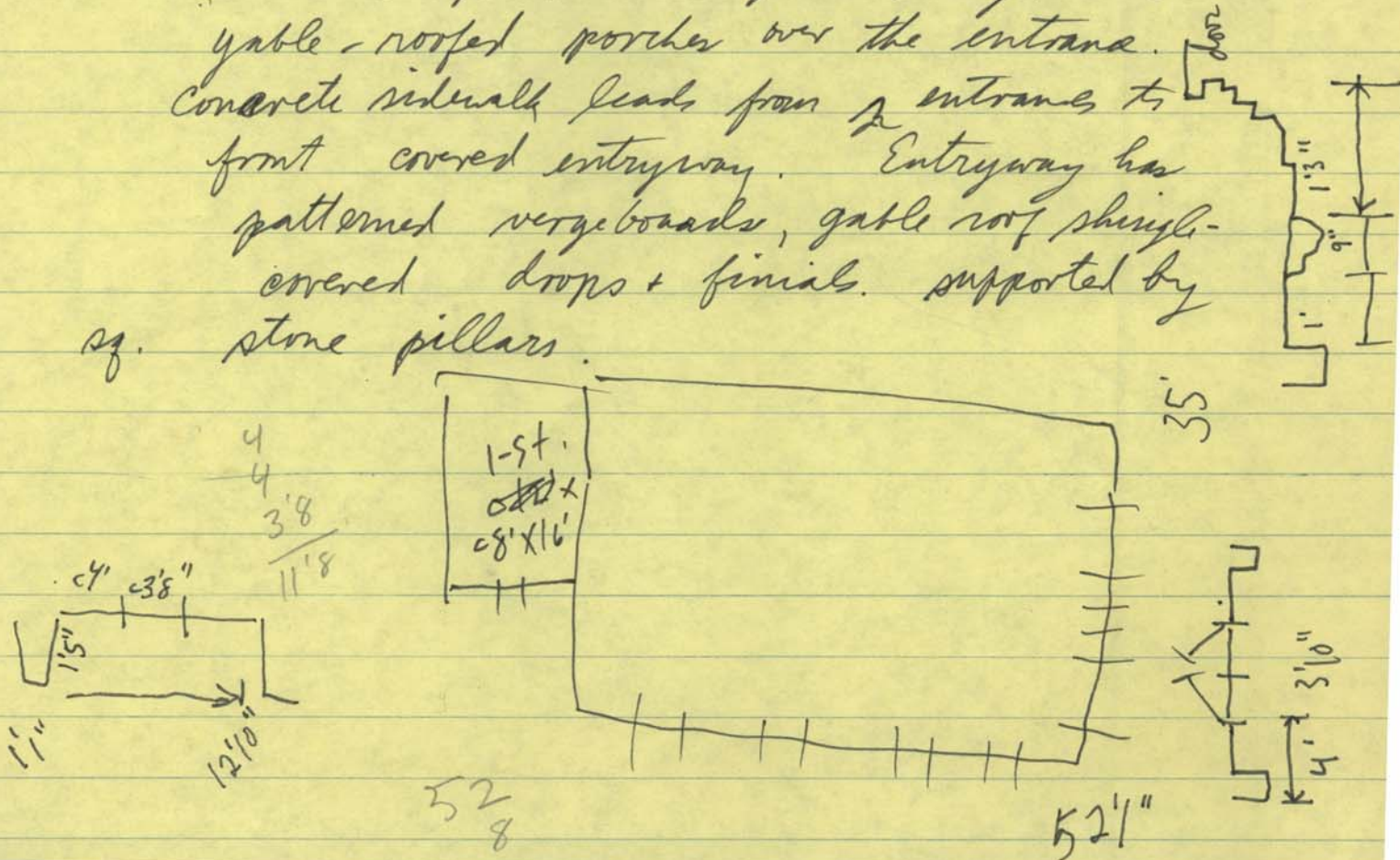
moulded water table. Buttresses (shouldered)

two front entrances double doors made of beaded tongue + groove diagonally-laid doors. Ceramic knobs. Arched entry.

Decorated posts hold up the shingle-covered gable-roofed porch over the entrance.

Concrete sidewalk leads from entrance to front covered entryway. Entryway has patterned vergeboards, gable roof shingle-covered drops + finials. supported by

sq. stone pillars.



bracketed plain cornice

square frame belltower

lowered round-arch windows

diamond-patterned shingled steeple topped  
by a chicken weathervane

gable is stepped

wooden moulded cornice

$\frac{1}{2}$  acre.

previously surrounded by an iron fence but  
replaced with a rail fence.

burial ground on all sides of church.

some large trees, incl. oaks + cedars.