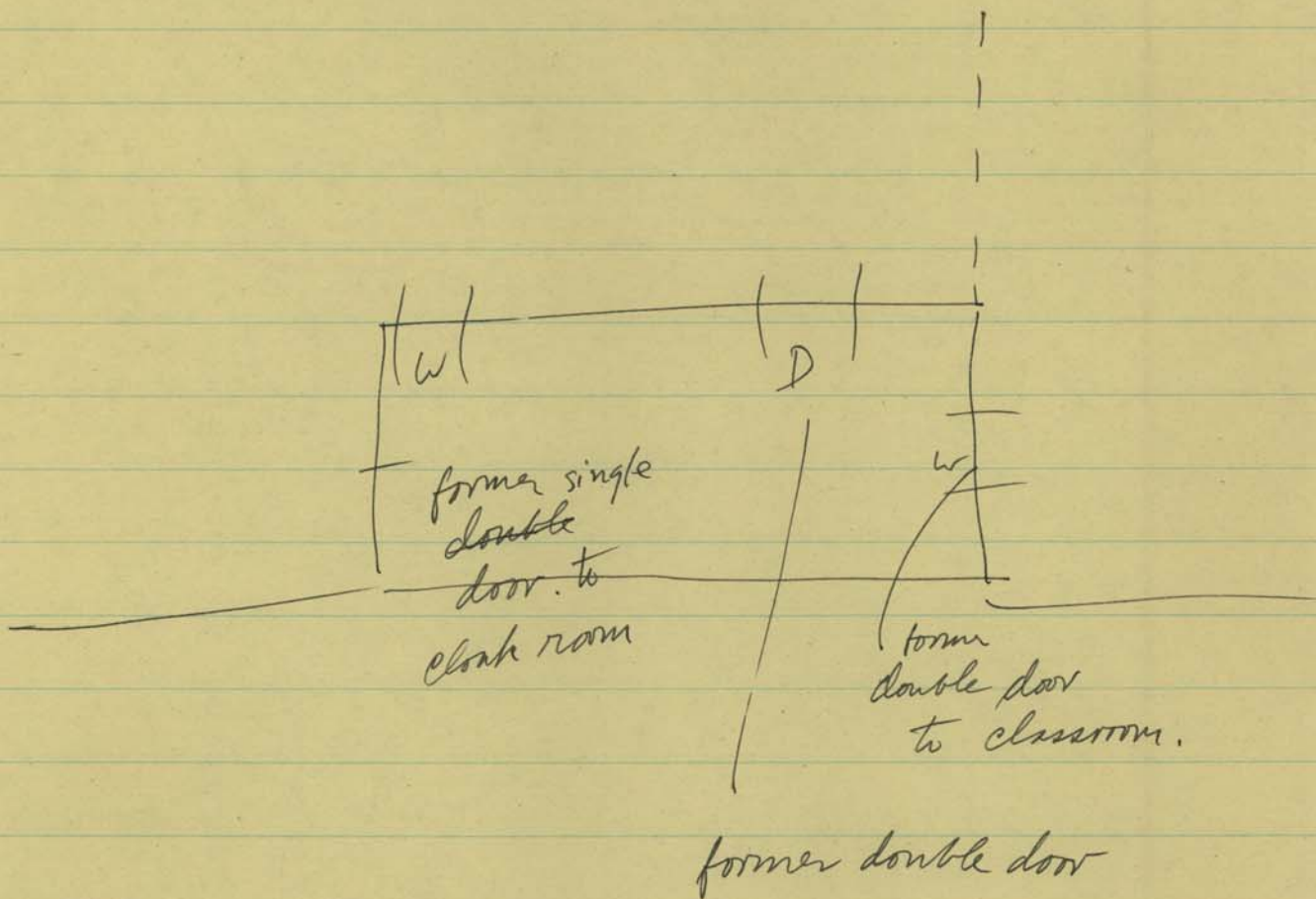


Groveton Sch.

8-20-



floors yellow or ja. pine.

wainscoting to window sills. ~3'.

beaded ceiling. - removed & plastered over.

ceilings were 16' high. lowered
ceil. & made 2d floor.

inst. central heat, a.c.

was 1 chimney in corner to serve 2 rooms. <sup>enlarged +
F.P. added.</sup>

Mr. R. remodeled & added stone facing ~1971.

Mr. J. moved in 1972.

former cloak room now bath room.

out house is behind hen house.

Foundation is cement & stone.