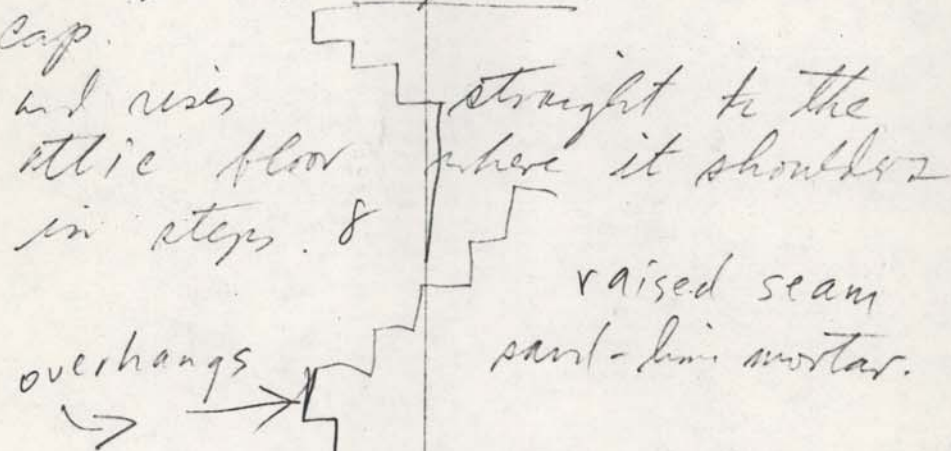


Hazelwood 5-13-81

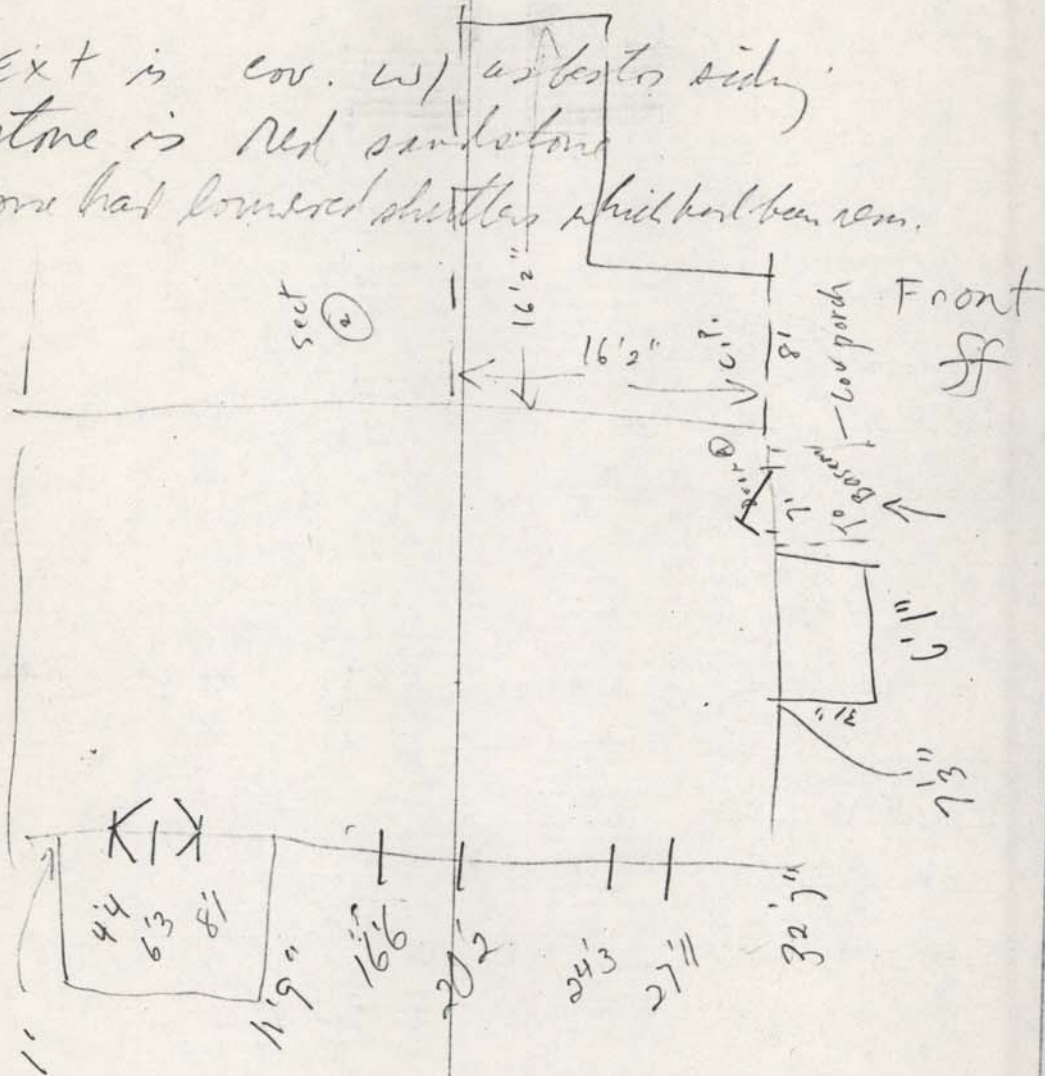
a two-story ^{side-passage} I-house 3
bay long & has an
external brick chimney laid
up in Flemish Bond
House rests on a stone? ~~has~~
foundation w/ a basement
Foundation is partly stuccoed
stack has a water table at
c 3 feet from ground, a corbelled
cap.



has a cut out rake, a box
cornice, 2 chimney windows
windows 12/8 2d floor
surrounded by architrave trim.
Front door has a fan light
architrave moulding
double front door w/ flush panels 3 per side

1st fl. window
 home-made screen w/ double glass
 out shed-roofed
 small covered porch over entrance
 has square posts supports w/
 chamfered corners

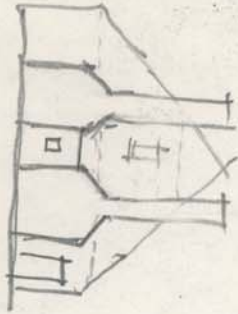
Ext is cov. w/ asbestos siding
 stone is red sandstone
 Home has lowered shutters which had been rem.



(A) DOOR 6-panels mottled panels

7'3
 6'1
 7
 20'4

Section 2

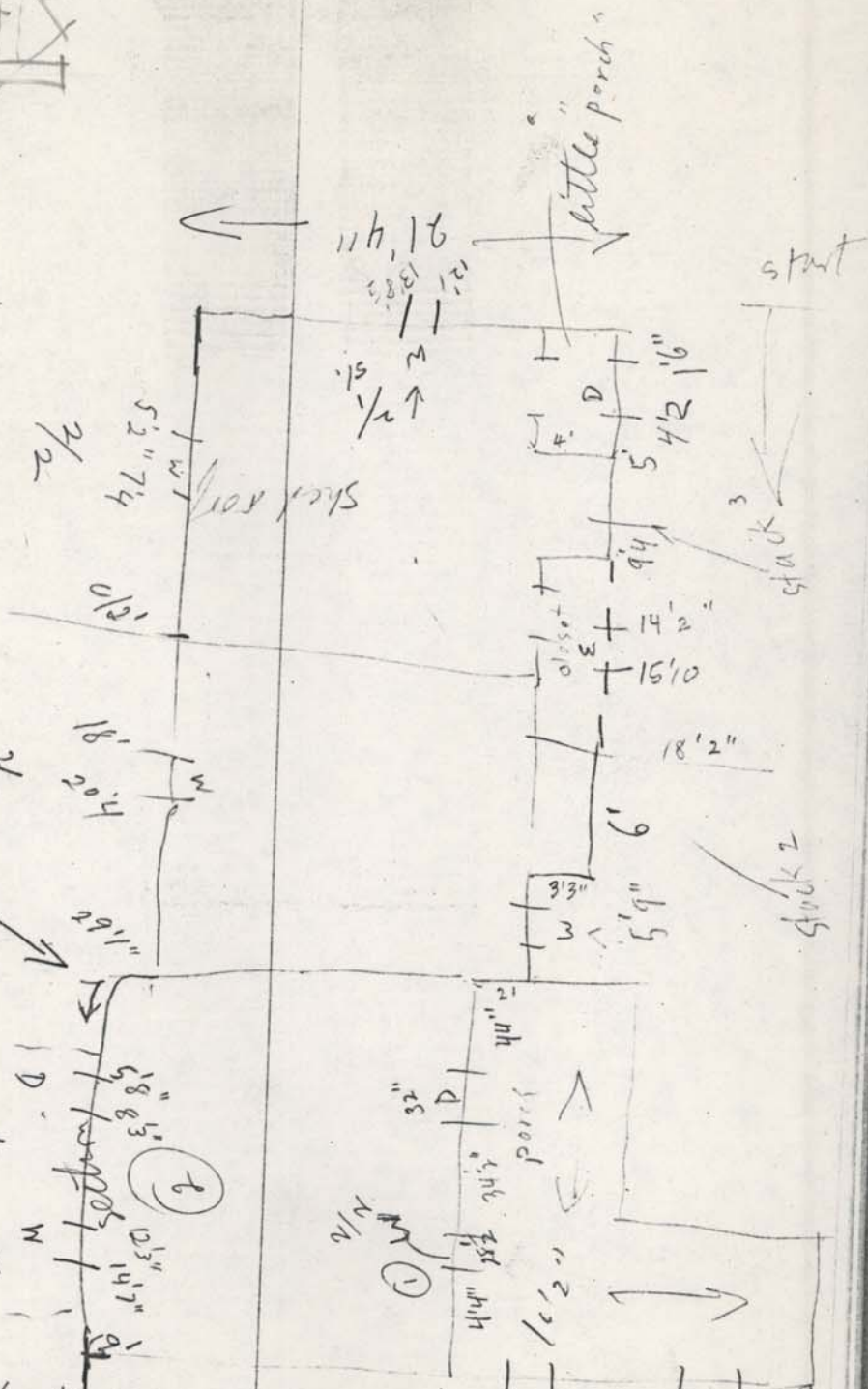


29
12 1/4

12 x 21 1/4"

17 x 21 1/4"

oblique angle from 5' x 10' 8" greater 90°



sect 1

① window = 1/2 old glass
pl. wide trim. door to right is
4-panel mach. made 1. in 15 plain, 15" wide w/ chamfering

11 1/4
6 4 9
2 1/2
19

Section 2
joins front 5 part w/
3d section
has porches on the 2 open sides w/ cut out
brackets + chamfered square
posts windows $\frac{2}{2}$
4 panel door
brick stove chimney where pt 1
meets this section.

Section 3,
has a 2-shouldered brick
chimney w/ corbelled cap
water table c 18" above ground.
raised lean mortar f.
stuccoed over girth.
brick basement w/
soft bricks w/
yellowish mortar (sand)
Flemish bond on chimney



faces south?

Section 3 has
plain wide box + rim
windows 2/2

joined to section 4 on the
east side w/ a pent closet
having built-in shelves, + a
small ~~fixed~~ hinged on one side
4 pane window.

see moulding beneath the roofline here

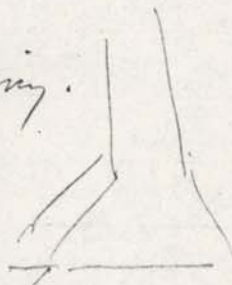
1-story
is a lean to
brick chimney

section 4
w a
on the east end.

square stack
with a stringer
atop,

full, skimming.

like an oven
stacked



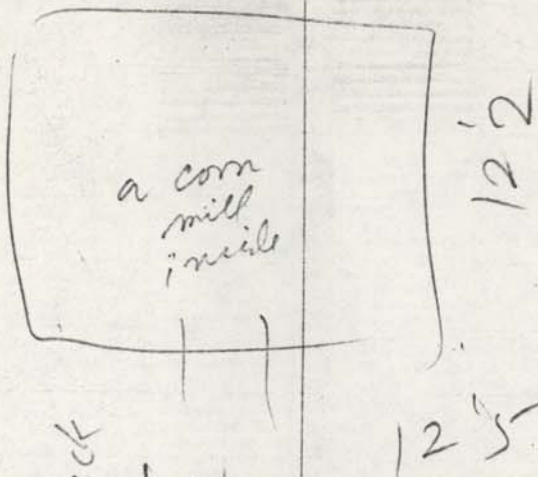
section rests on a brick? ~~brick pier~~?

found w/ no beam.

mortared w/ portl. may be just a facing

dir behind the house at 3 am. bldgs

a square, partly constructed
pent roofed out bldg



To Back
of
House
concrete floor

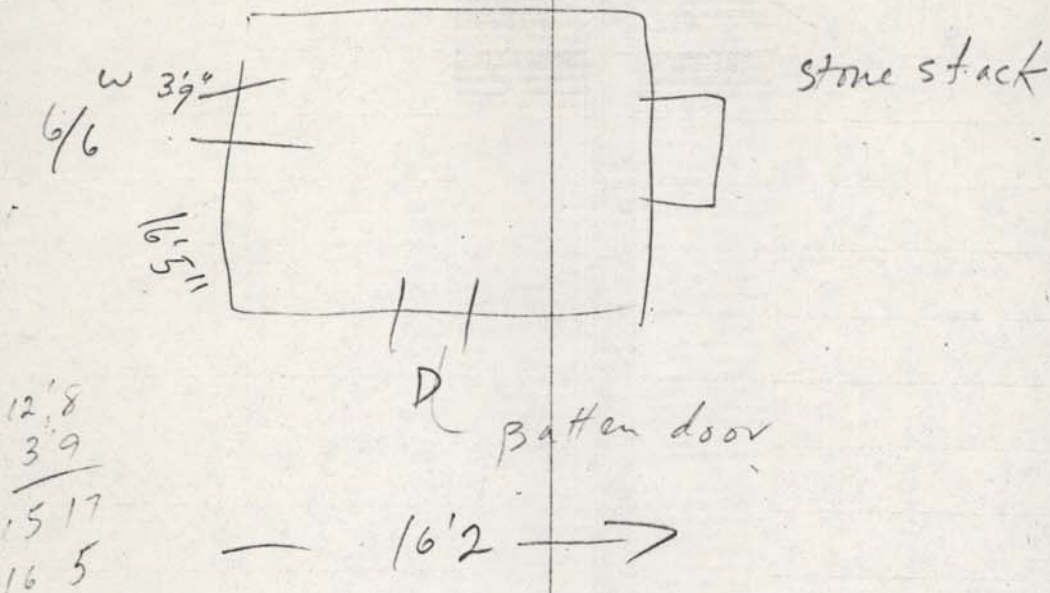
low w wood boards
roof trusses are old,
so are sills

posts are mortred for something else,

~~100~~ old beams sills. from elsewhere
prob barn.

out bly (2)
 on a stone foundation
 w/ portland cement mortar?

gnia roofed



cov w/ wide weathered clapboards w/
 some repl. siding

Box cornice

plain bracketed mantel shelf
 large f.p. opening cov. over cov/
 stove use;
 wide fl. boards.

curved saw joint
sawn lath

finished inside. narrow straight

stairs to left. board
paneling high trasers
cut w/ curved saw

House surrounded by a
fence. C 100

stones stepping. Lead wood
to out bldg + to gate

Interior

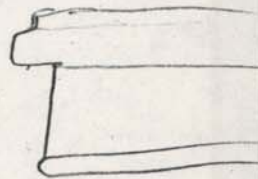
Section 4.

sloped ceiling. [+ floors]
plaster walls with pine floor.

mantel is small + blocked
for stove use. Thin moulded shelf
w/ rounded corners

dentils may in place
plain red. surround framed
with single bead moulding
Chair rail all around. + baseboards

walls about 6" thick chair



cupboard to right of f.p. has vert
batten door w. butt hinges.
main door is vert. w/ butt hinges

Section 3

is one
mantel
winder & paneling (plain boards w/ vertical
wainscoting + chair rail
med-width pine? floors
vert. batten doors w/ single feed.

H.L. hinges wrought nails?

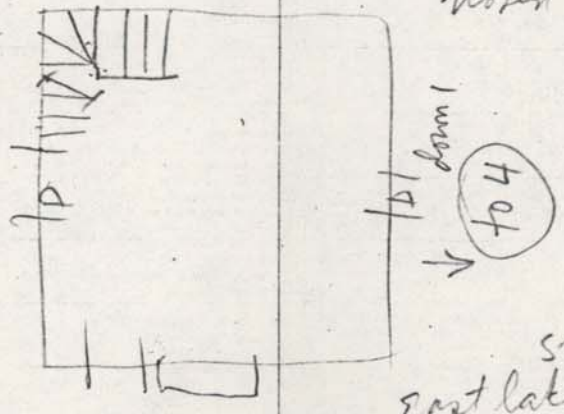
Mantel Thin shelf supported by 3-part
moulding plain surround
mantel is high. joints have double bead

Window trim is plain.

under stair closet has i repl. butt hinges

wood treads

Small room
above... w/
guard rail. w/
square baler.
simple newel
w/ chamfered
corners.



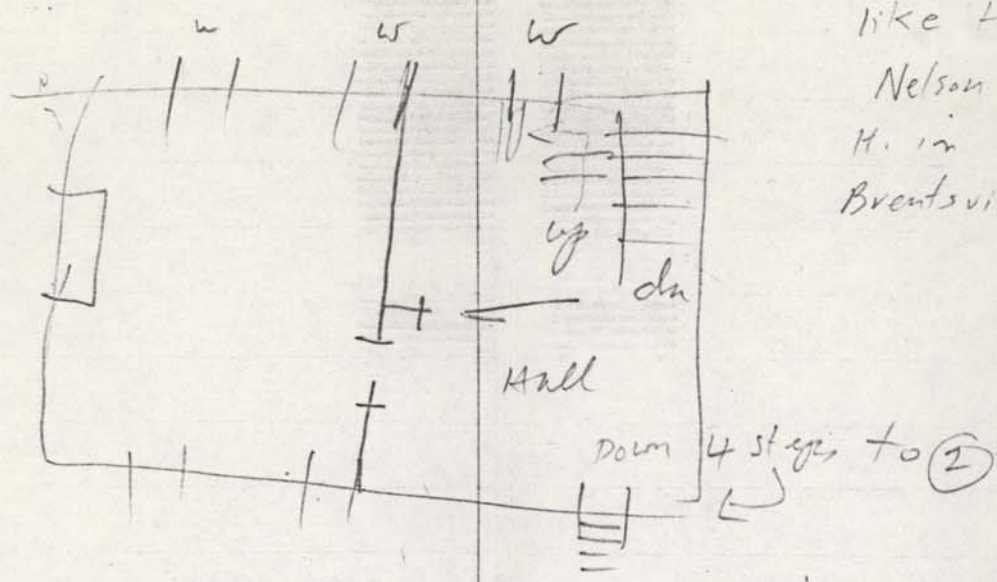
Small
East lake mantle
w/ bracketed shelf
upstairs

repetans sect. 2
has its own stairs +
hull + rail like in
section 3. no f.p. only
stove fitting.

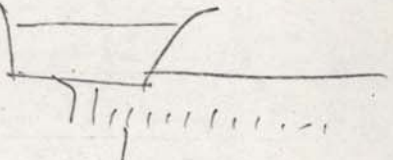
Section 1 2d fl.

mantel

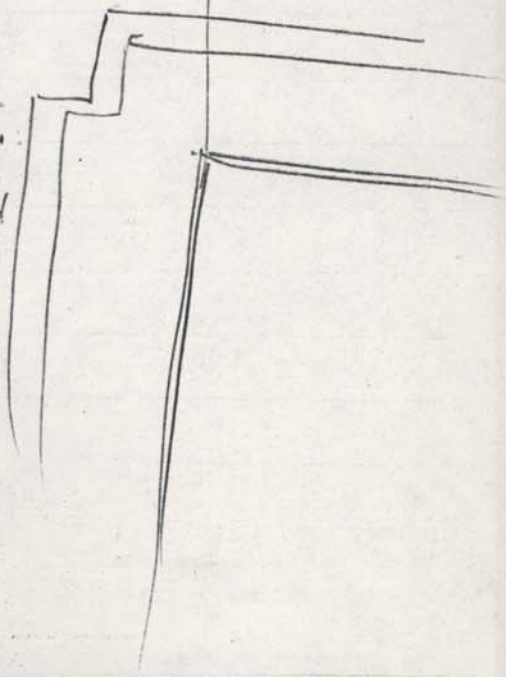
like the
Nelson
H. in
Brentsville



cut out moulded shelf
supported by dentils
architrave surround,



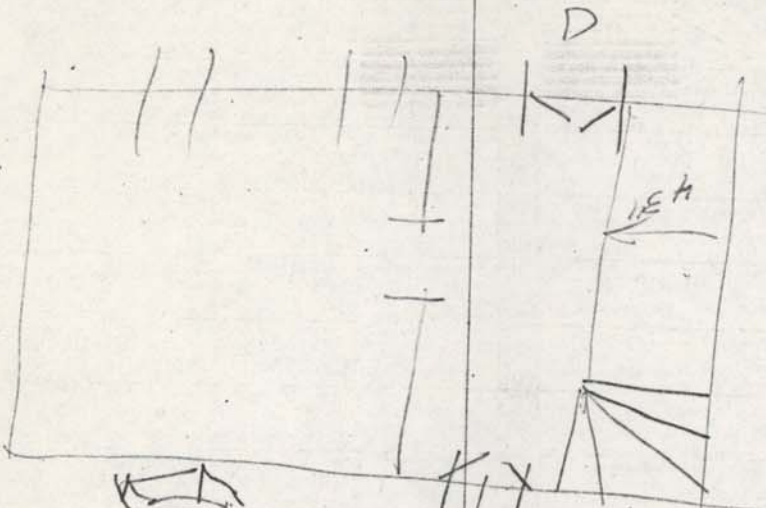
chain rail
 architrave window T.
 6-panel doors ^{moulded} but not ^{raised}
 w/ spring loaded
 butt hinges
 hardware removed
 box locks.



Finished after
main section
winder

1st fl.

treads
10" deep
riser 7"



Asphalt from on of sk
mended joints & paper
Barnscoff in hall + paper
stained + grained
mended + dentel ch. rail

Turner moud square base
bulge in middle
paper tile
mended rail

Hall = 11' 3" wide

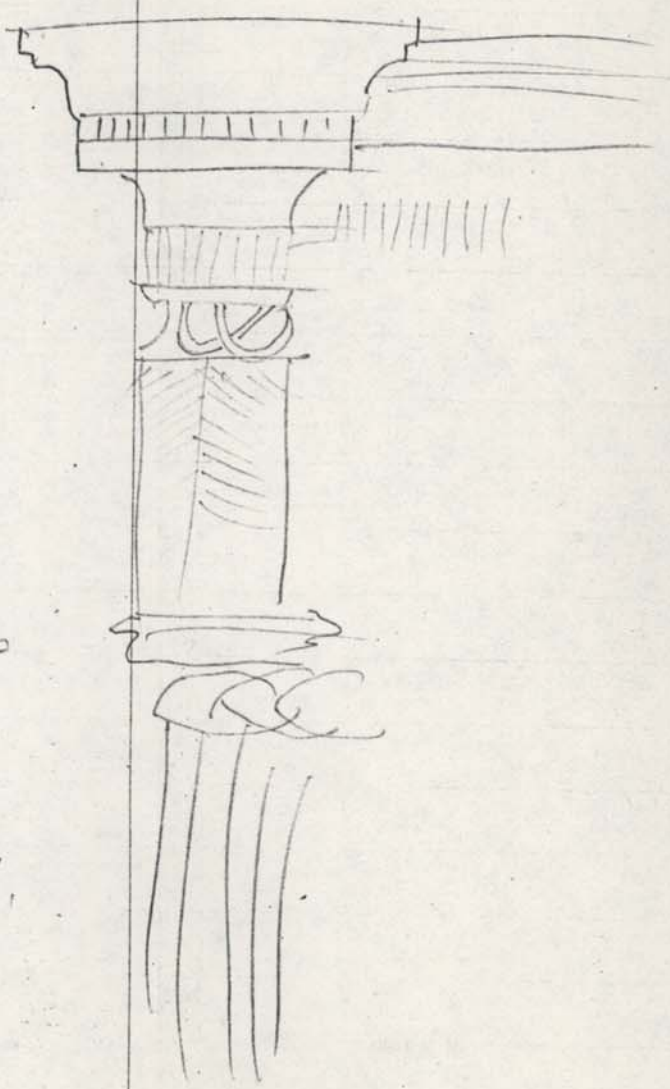
Mantel in large ornate

moulded cut-out shelf w. dentils
needed under shelf moulding
scalloped applique work.
fluted frieze
cut out

interlacing
semicircles

interlacing ellipses

recessed



doors are raised mounted
panels w/ graining.

Ceramic knobs. box locks.

