

Hazelwood 5-13

a Two-story, I-house 3 (5182)
side-passage
long & having an
external brick chimney laid
up in Flemish bond
House rests on a stone? ~~for~~
foundation w/ a basement
Foundation is partly stuccoed
stark has a water table at
c 3 feet from ground, a corbelled
cap.

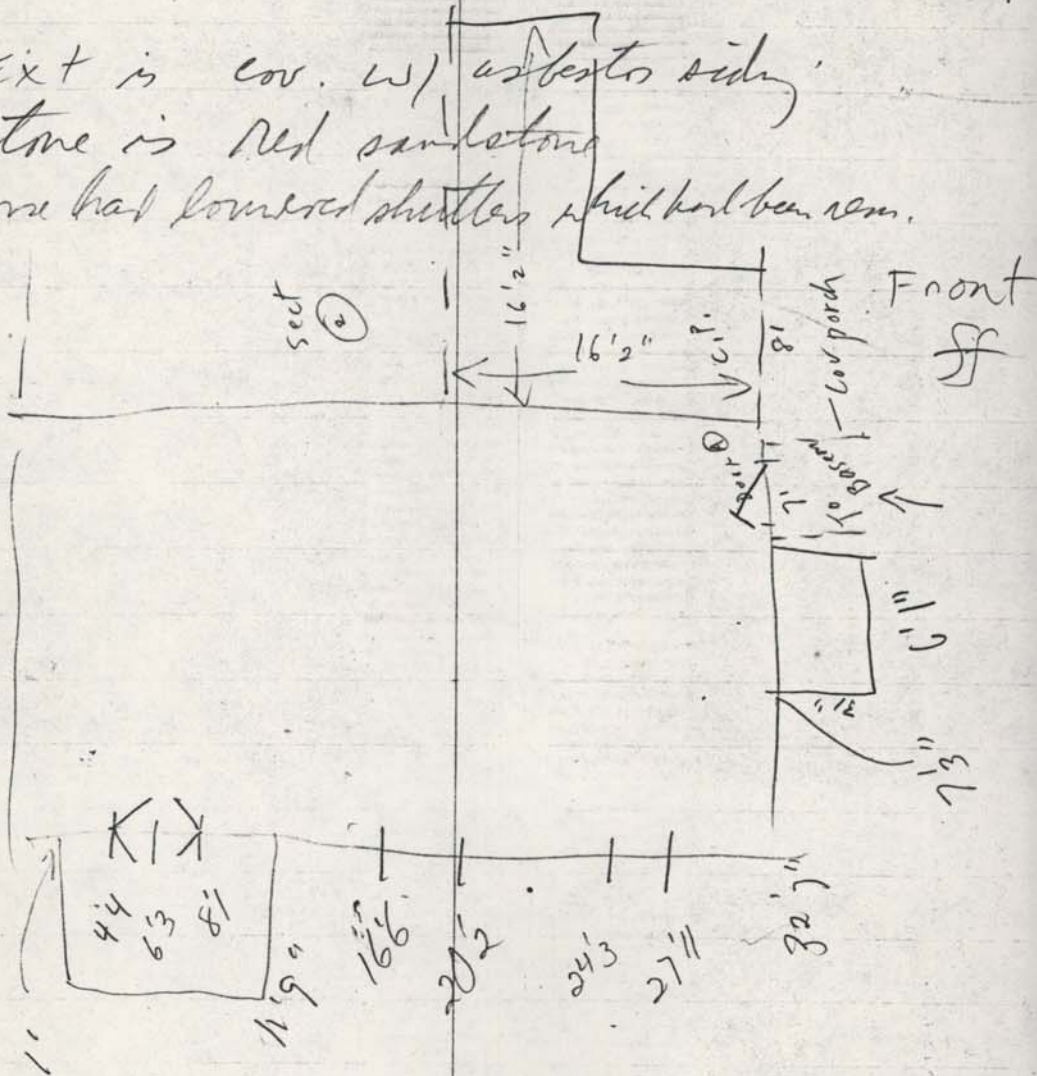
and rises straight to the
attic floor where it shoulders
in steps. 8
overhangs → →
raised seam
sand-lime mortar.

has a cut out rake, a box
cornice, 2 chimney windows
windows 12/8 2d floor
surrounded by architrave trim.
Front door has a fan light
architrave moulding
double front door w/ flush panels 3 per side

1st H. winter: 12/12

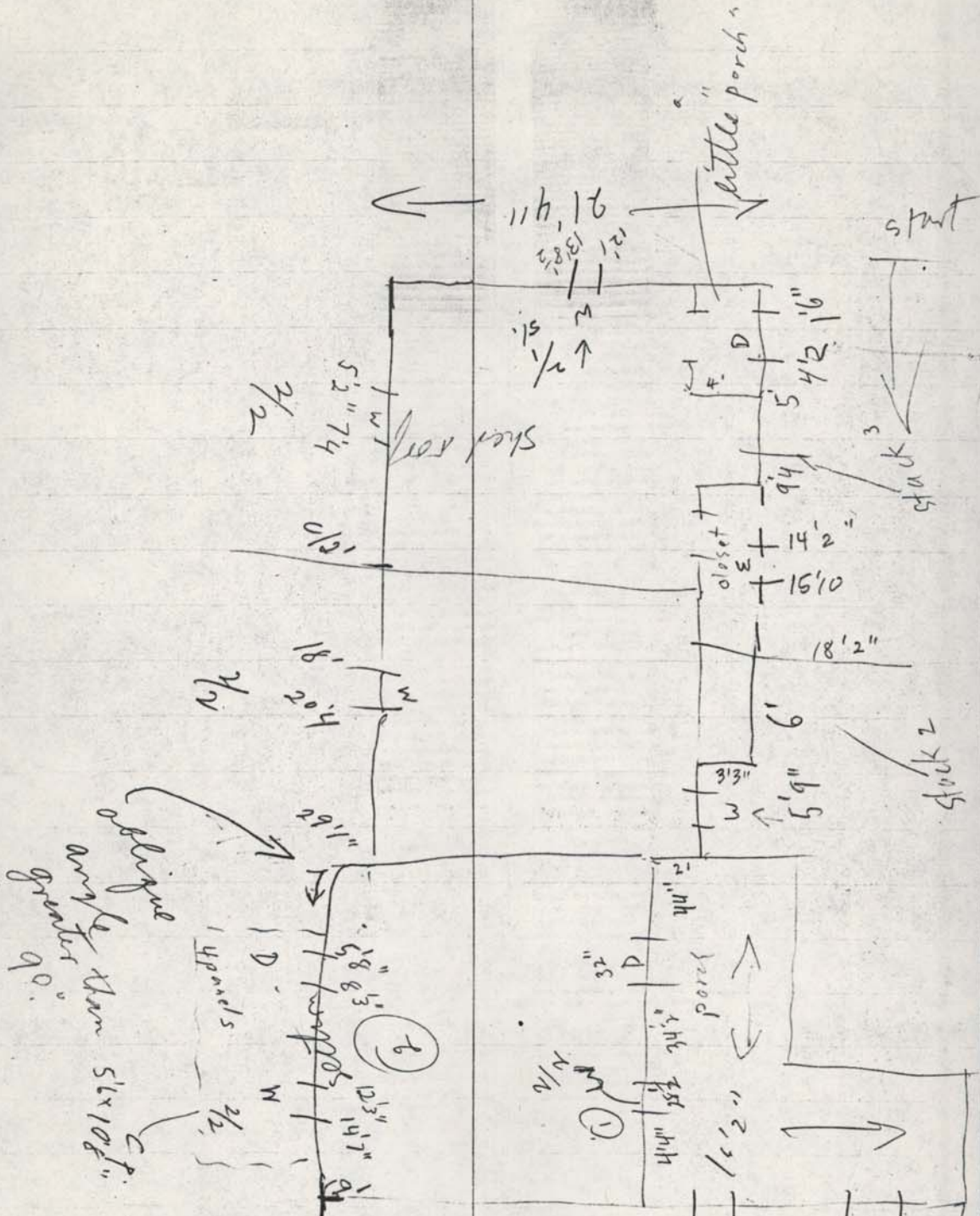
home-made screen door double glass
out shed-roofed.
small covered porch over entrance
has square posts supports w/
chamfered corners

Ext is cov. w/ asbestos siding
stone is Red sandstone
Have had lowered shutters which had been rem.



(A) DOOR 6-panels mottled panels

Section 2



① window = 3/2 old glass
 pl. wide trim, door to right is
 4-panel mach-made trim is plain, 45" wide w/ chamfering

sect 1

section 2

join front I - part w/

3d section
has porches on the 2 open sides w/ cut out
brackets & chamfered square
posts windows $\frac{3}{2}$

4 panel doors

brick stove chimney where pt 1
meets this section.

Section 3.

has a 2-shouldered brick
chimney w/ corbelled cap
water table c 18" above ground.

raised seam mortar j.
stuccoed over partly.

brick basement w/

soft bricks w/

yellowish mortar (sand)

Flemish bond on chimney



facing south?

Section 3 has
plain wide box + rim
window 2/2

joined to section 4 on the
east side w/ a pent closet
having built-in shelves, + a
small ~~fixed~~ hinged on one side
4 pane window.

see moulding beneath the roofline here

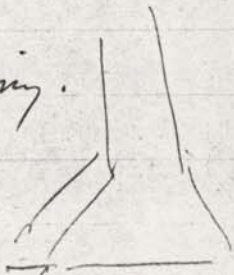
1-story
is a lean to
brick chimney

section 4
w a
on the east end.

square stack
with a stringer
atop,

like an oven
stuccoed

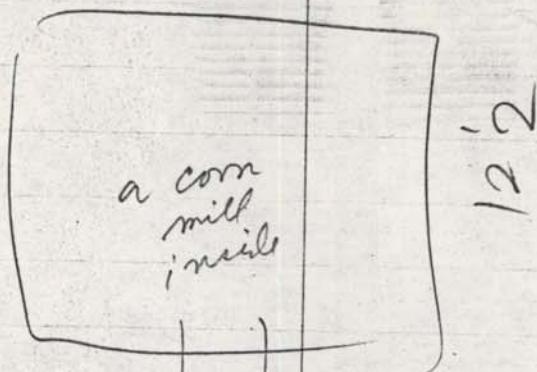
full, skimming.



section rests on a brick? ~~brick piers?~~
found w/ no beam.
mortared w/ portl. may be just a facing

dir behind the house a.c. 3pm. bldgs

a square, partly reconstructed
pent roofed out bldg



12'5

To Back
of
House

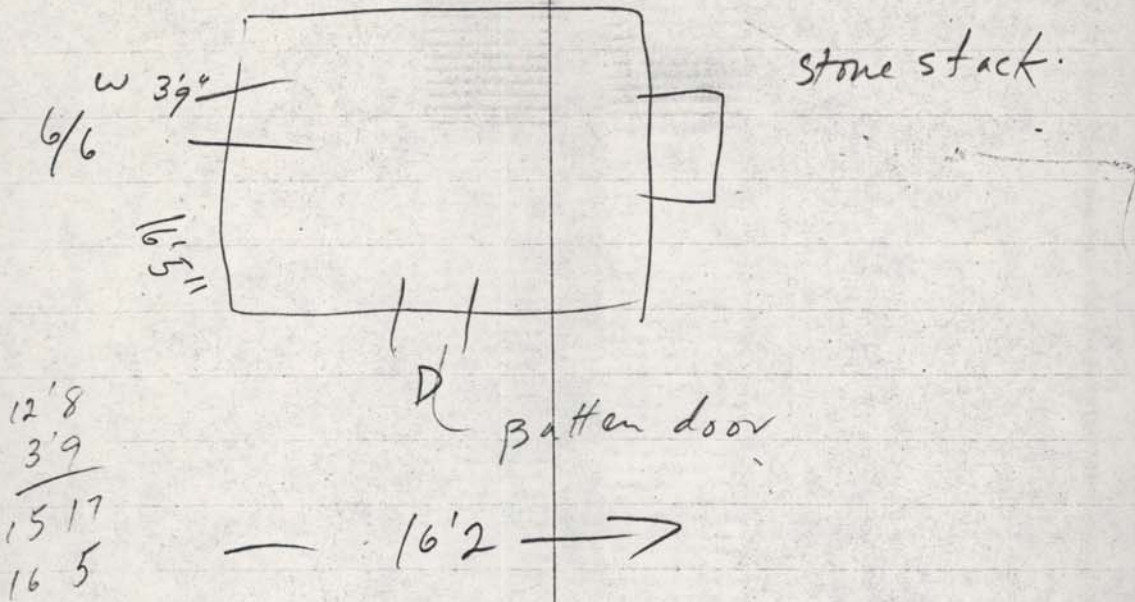
concrete floor

low w. wood & boards
roof trusses are old,
so are sills

posts are mortared for something else.

~~1~~ old beams sills, from elsewhere
prob barn.

out bldg (2.)
 on a stone foundation
 w/ portland cement mortar?
 gable-roofed



cov w/ wide weathered clapboards &
 some repl. siding

Box cornice

plain bracketed mantel shelf
 large f.p. opening cov. over cov. w/
 stove use;
 with fl. boards.

circular saw joints
sawn lath

flushed inside . . . narrow straight

starts to left. board
paneling high trasers
cut w/ circular saw

House surrounded by a
fence. C 100

stones stepping lead road
to out bldg + to gate

Interior

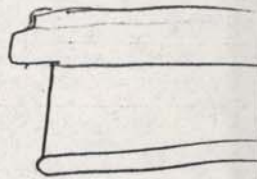
Section 4.

Sloped ceiling [+ floors]
plaster walls wide pine floors.

mantel is small + blocked
for stove use. Thin moulded shelf
w/ rounded corners

dentils masonry in places
plain rest. surround. trimmed
with single bead moulding
Chair rail all around. + baseboards

walls about 6" thick chair



cupboard to right of f.p. has vert
batten door w. butt hinges.
main door is vert. w/ butt hinges

Section 3

is one room

mantel

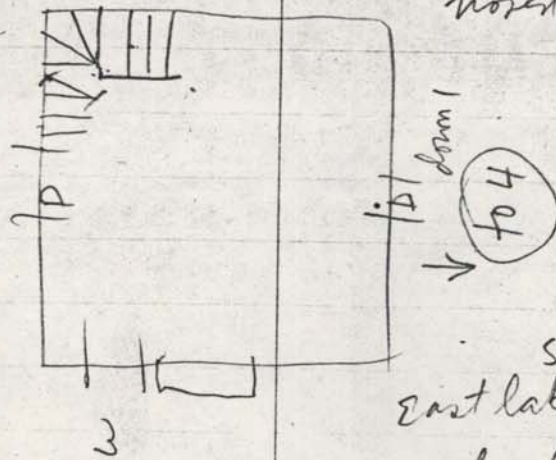
winder & paneling (plain boards vertical
wainscoting + chair rail
med-width pine? floors
vert. batten doors, w/ single bead,

H.L. hinges wrought nails?

Mantel Thin shelf supported by 3-part
moulding plain surround
mantel is high, joints have double bead
windows + min is plain.

under stair closet has 6 repl. butt hinges
wood treads

small room
above...
quartz rail w/
square base.
simple newel
w/ chamfered
corners.



small
east lake mantle
w bracketed shelf
upstairs

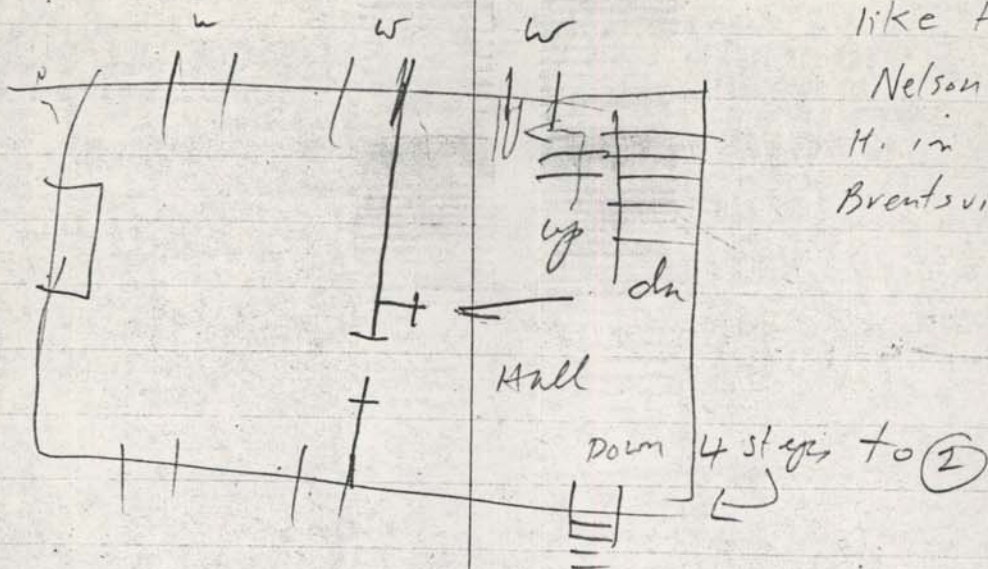
upstairs section 2

has its own stairs +
hovel + rail like in

section 3. 10 f.p. only
store fittings.

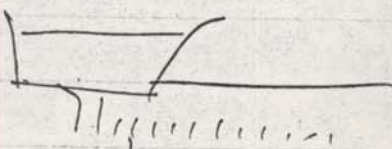
Section 1 2d fl.

mantel



like the
Nelson
H. in
Brentsville

cut out moulded shelf
supported by dentils
architrave surround.



chain rail

architrave window T.

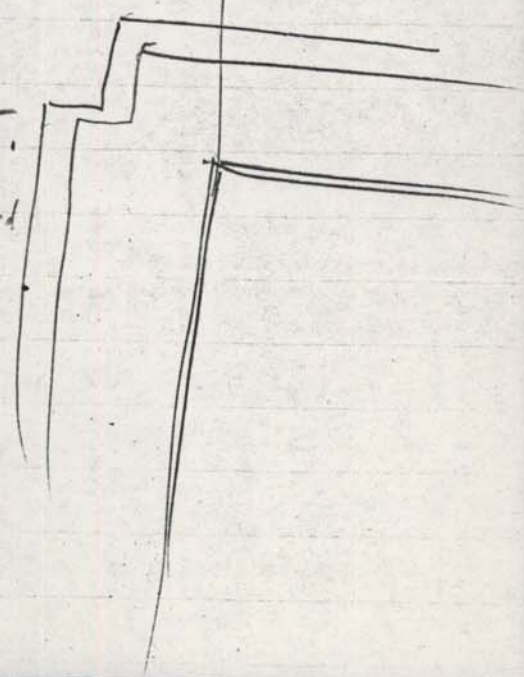
6-panel door moulded but not raised

w/ spring loaded

butt hinges

hardware removed

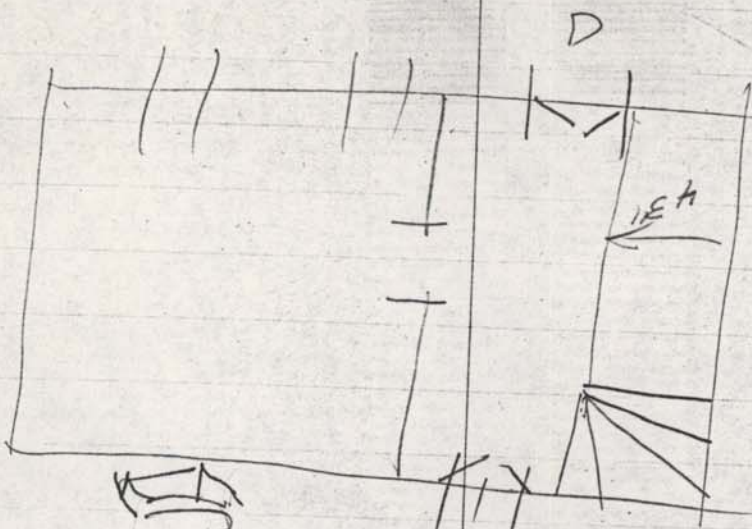
box locks.



Finished attic
main section
winder

1st fl.

treads
10" deep
riser 7"



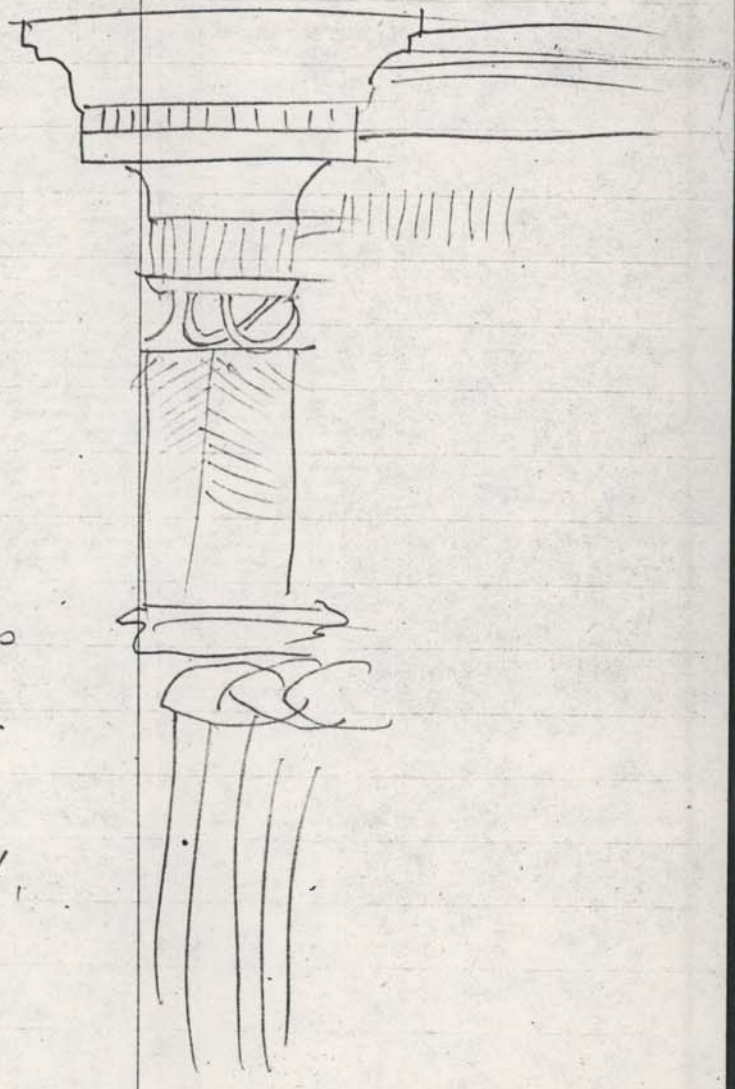
asphalt from on of sk
mended joints of
Barnscooting in hall + porch
stained + grained
mended + detailed sk. nail
Turner made square base
bulge in middle
square top
mended nail

Hall = 11' 3" wide

Mantel is a large ornate

moulded cut-out shelf w. dentals
needed under shelf moulding.
scalloped applique work.
fluted frieze
cut out

Interlacing
semicircles



Interlacing ellipses

needed.

doors are raised mounted
panels w/ graining.

ceramic knobs. box locks.

