

Chronology.

log home already there.

St. Joseph's built c/1893, as a n. instr. school for boys ^{a church}

Chapel built 1893 - demol. in 1960s?

St. Anne's school/Convent 1894-1895, 1915, 1928

St. Edith's opened 1894. Academy was est. to help pay for girls at St. Anne's, St.

Anne's ^{school} built in about 1915 in front of St. Anne's Convent.

In c. 1922 the Brotherhood left Tutor Hall, turning the prop. over to the nuns, on cond. that they open a school for poor girls.

In the 1920s the orphanage was moved to Richmond. St. Anne's was converted to a retreat facility, ^{weekend retreat.} Georgetown U. used it dur. 1950s+60s as -

In 1928 the guest quarters was built beside the 1915 addition to the orig. St. Anne's building.

The guest qtrs. was demol. in 1978.

* St. Joseph's Church and St. Joseph's Industrial school demolished in 19__.

~~St. Edith's Academy~~ and the original ¹⁸⁹³ chapel was demolished in the 1930s and a new ~~one~~ chapel was constructed on its site. St. Edith's Academy was demolished in 19__ and in ~~it~~ the 1950s ~~place was built~~ the present St. Anne's Convent was constructed.

Linton Hall.

JM 25 Feb 1965 "Benedictine Sisters Came
To Prince William County in 1864.
Sandra Pence in 2 pts.
photo.

includes photo of
2 pers. in front of Chapel.

Part 1

~~Sandra~~ St. Benedict's Convent is the
Mother House for the Benedictine sisters in the
Richmond Diocese, the location of Linton Hall
Military School, + St Ann's Retreat House.

In May 1894 the Sisters of OSB
Came to P.W. They had come to Va. in 1867
+ est. a Mother home there. Because living
conds. in Richmond were not healthful, the sisters
were semi-cloistered + could not get out in
the fresh air, many of them died from TB.
The Bishop therefore persuaded the m to find a place in
the country.

Lint. Hall
art.

(2)

The sisters at the invitation of the Benedictine Priests who had come from Belmont N.C. and were operating a boys school there, came to the Linton Estate to est. a convent + girl's school. - St. Edith's Academy + it was in existence until 1923.

- Then Linton Hall School for Boys was est. and St. Bertrude's School for girls was opened in Richmond. The school for boys became the military school, and the only one for boys from 1st grade on in Va. or Md.

The order at Linton totals 103 sisters in 1965. Many of the sisters are from the Richm. area. over half of them are usually away teaching - in Man, Richm, Warrent., FF Arl. + Hampton.

Every 6 years the community elects a new superior. Convent is practically autonomous.

Food consumed at the convent was until recently raised on the land. Dairy herd, ^{bought 1948} sold sometime before 1965, provided milk for conv. + the mil. school.

NEW BARN ERECTED
c. 1948.

(5)

Belt cattle & veg. prod on the farm. Work was done by the community.

Pt. (2)

"Linton Hall Military academy has Enrollment of 270 Boys"
by Sandra Ponce 4 mar 1965 J-M.

School was started in 1923 as a boys school.
Became a mil. acad in 1932. Present Bldg const 1956.
269 boys is highest # in c/10 yrs. & is the max. capac

Sister Mary David OSB is principal.

Most of the boys come from the Md, Wash, Va.
metrop. area.

School is housed in a long bldg. cont. classrooms,
dorms, gym & office.

All of the teachers are sisters from the convent.

St. Anne's

St. Benedict.

WMA

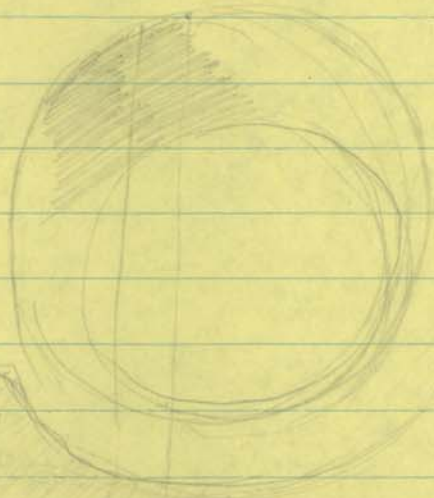
Thomas Fortune Ryan of Lynchburg, VA. c. 1890s.
He + Wm. Whitney had monopoly on streetcar lines, &
also made fortune in coal, etc.

St. Jean
St. John Baptiste in Manhattan
Sacred Heart in Richmond.

private chapel site estate Oak Ridge (Nelson County)

see book: Real Lace. Irish families in America by Stephen Birmingham

Mar. 1894*



The Fruit of his Works

Sister Mary H. Johnston.

975.527 Jo

history of the Benedictine.

Map St. Mary's Benedictine Institute 9. 43 1905
R. of Way 11. 64 1965

Deeds 1887-1908

to St Mary's Benedictine Institute

from W.W. Kinkeloe
DB 42. p. 467

Rev. Mother Alphonse Bliley

The Fruit of his Works, a history of the
Benedictine sisters of St. Benedict's Convent
Briston, Prince William County, Virginia
by sister M. Helen Johnston O.S.B., B.S.

Leighton Hall Press, Briston, Va. ©1954.

Buildings, notes:

Sisters originally came from Bavaria in 1852.

St. Walburg's Abbey, Eichstätt Bavaria.
came 1st to Western Pa. near Latrobe
to St. Vincent's Priory.

Either moved to or name was changed, because
by 1855 40 nuns were living at St. Joseph's
Convent, St. Mary's, Pennsylvania.

⇒ Benedictine sisters moved to Richmond
after the Civil war. 1868 to reopen
St. Mary's school. a Notre Dame ^{founded} school.

Orig. Leighton mansion was destr. by fire ^{just} before
the Civil War.

Sister Baptista left part of "Lintonford"
to the Benedictine Fathers of Belmont
Abbey N. C. on condition that
a school for poor boys be erected there;
and another part c500 acres to
the Benedictine Sisters to be used
in a similar manner for poor girls.

Boys school was to become an Industrial
School St. Joseph's.

No endowment went with the land.

When the Benedictine fathers, Father Julius
were at Bristol they found the unfinished
Linton mansion and the log cabin,
or kitchen part in which Miss Anne
Phillips had lived for many years.

Frame Bldg. was torn down - prob. the "mansion"
2 Brothers + Father Julius moved into the
log cabin. Chapel was in one room.

St. Joseph's Inst. est in 1894

Mother Edith accepts Bristow prop 1893.

Immediately purchases adjoining Kunkelhof farm.

Lumber for the bldg. at Bristow was ordered from Mr. Fritz Sitterling of Richmond.

In 1894 spring, the sisters moved up to Bristow.

Superior was ~~a~~ Sister M. Alphonse Bliley, O.S.B.

St. Edith's ^{Academy} frame bldg. was completed
Sept 1894

In 1901 a large wing was erected on the back of St. Edith's, providing space for kitchen, refectory for both sisters + girls, number of private rooms + a store room.

St. Anne's. finished 1897.

lumber from woods on prop.

carpentry done by Leonard Baumgardner assisted by Brother Gilbert.

Barrmgardner was a brother of Rev.
Fr. Willibald, O.S.B. &
would accept no money for the work.

St. Anne's became a home & shelter, school
for local young girls

In 1901 the Mother House was moved to the
Bristow Mission.

In 1898, dur. the Spanish-Amer. war, several
thousand soldiers, ordered from Camp Alger,
Md. to Camp Thoroughfare, Va. En route,
they stopped at Bristow, 2 1/2 mi. from the
convent grounds. Food was sent to the
soldiers who remained there for 1 week
& in exchange for the food, guarded the
Convent and gave a concert.

The Chapel: Mrs. Thomas Fortune Ryan, who had
financed the Sacred Heart Cathedral in Richmond
gave \$2,000 toward a chapel. which was
blessed in 1902. Windows were donated
new pews, & stations of the cross. Many

of these objects are in the new chapel.

In 1911, one story was added to the chapel bldg. providing more space

About that time a new boarding school building was built. 4000 was donated by 2 Baltimore maiden ladies, Misses Andrews. An addition was planned + erected in 1908 - a 3-story Va. [frame?] building in front of the old frame structure cont.

lg dormitory 5 Class rooms, Principal office, auditorium, parlor, library, + guest room.

In 1927 the Brothers or Belmont Fathers left the Bristow Mission.

Closed the school.

A day school was opened at St.

Joseph for neighboring children.

Bldgs at St. Josephs were taken over for training the novices. 1927 NOVITIATE.

Father John lived in a lg. apt. on 1st fl.

In 1943 novitiate was brought back to the
mother house, + St. Josephs used
for tenant farmers + their families

St. Anne's was enlarged sometime
prior to 1915 as a guest house as
well as a school.

Mr. + Mrs. Johnston parents of Sister
Agnes of Labroke Pa, frequent
visitors and residents at the convent.
Mr. J. planted the pin oaks on the grounds of
the Academy.

In 1927⁻²⁸ the Guest House was built
by Mr. Joseph Bahen of Wash. a
brother of one of the Sister Cecilia

Shrine. 1928. mosaic done by John J. Early
~~architect~~ Bahen + Wright (contractors)

St Edith's Academy closed

1922

St. Anne's

5/15

GREEN HOUSE OR DORMTORY

AT LINTON HALL MIL ACADEMY.

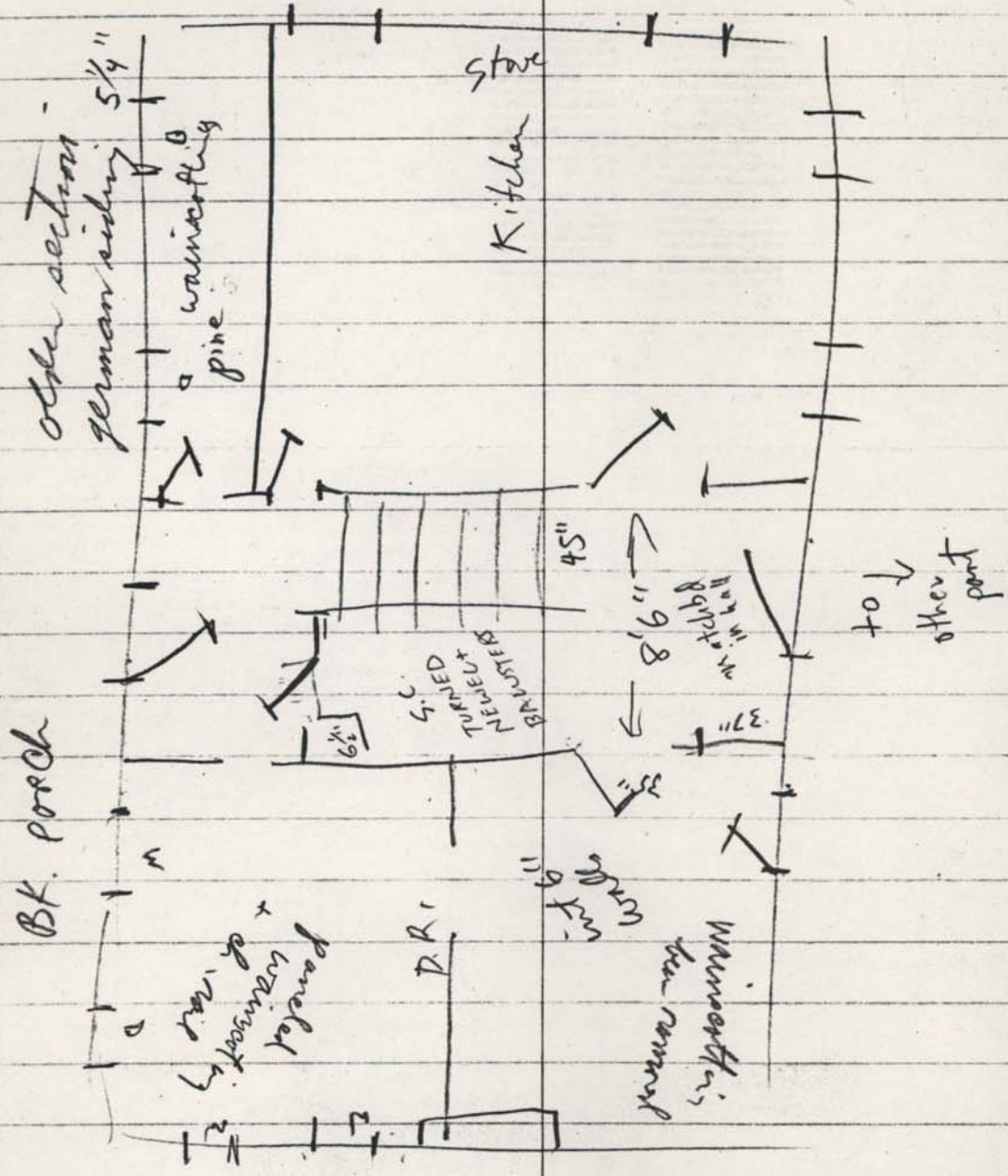
TO BE DEMOL "LATE SPRING" 1979.

oldest part in 1894-95, newer 1915.

"Early in the summer of 1893 a large tract of land, known as the Linton Estate or Linton's Ford, located in Prince William County, Va. was offered to the Benedictine Fathers of Belmont, N.C. by Sister Baptista Linton of the Visitation Convent, Washington, D.C. and her half sister Miss Ann Phillips."

Mother Alphonse wrote the journal.
prob. written in ~~1901~~ 1899

Aug 7, 1898 a group of 13,000 ^{marching} soldiers encamped at Chapel Springs.
from Camp Alger to Camp Thoroughfare
after close of Sp.-Am. War.



By 4-panel
doors

Shrine at Vinton Hall School

5/7
plestoy.

Wm. Johnston

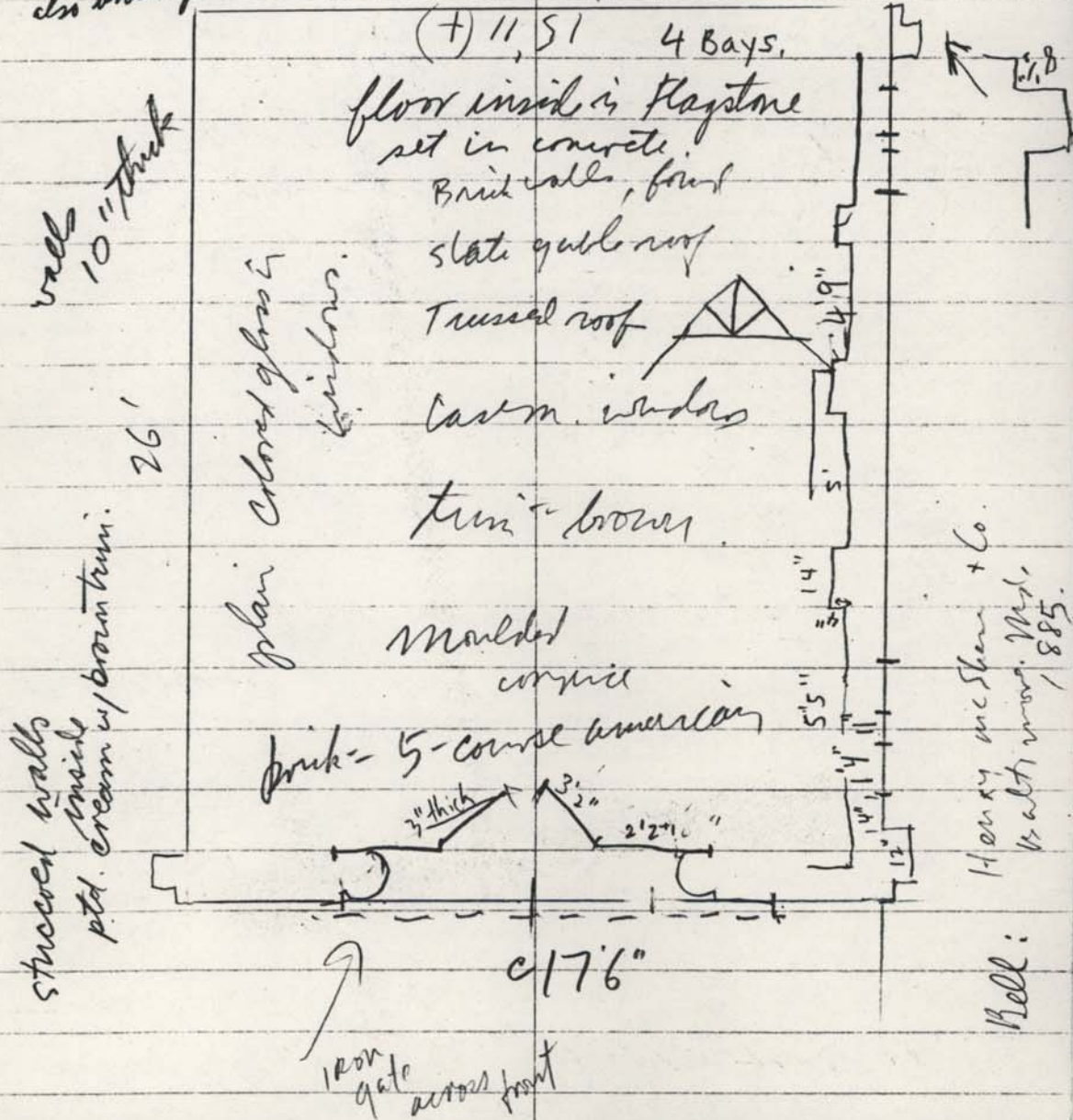
Sister Froy Johnston →

her mother was a head.

also built guest ftcs. in 1928.

plaque: Erected in memory of
W.A. Johnston by his wife
Mary S. Johnston / 1930

Mosaic inside of colored
stone.



32
73

Early Studios may have been the builder.

See a mosaic in there.

Acreage.

92½ acres sisters bought.

1700 acres were a grant from the
Linton Family.

Linton "mansion" was located where
Rienburg's home is now across st.
burned pre-Civil War.

Then built a foundation for another
home where Ford's home.

Chapel there built 1893 demol
in 1960s.

Small "summer houses" were
once all around - 2 remaining.

1700
92½

1792