

Lustron House

one-story gable-roofed residence on
a concrete foundation

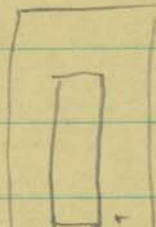
Exterior walls: ^{enameled steel} metal panels

Roof: moulded metal

Interior walls: enameled steel panels

floor covering: asphalt tile

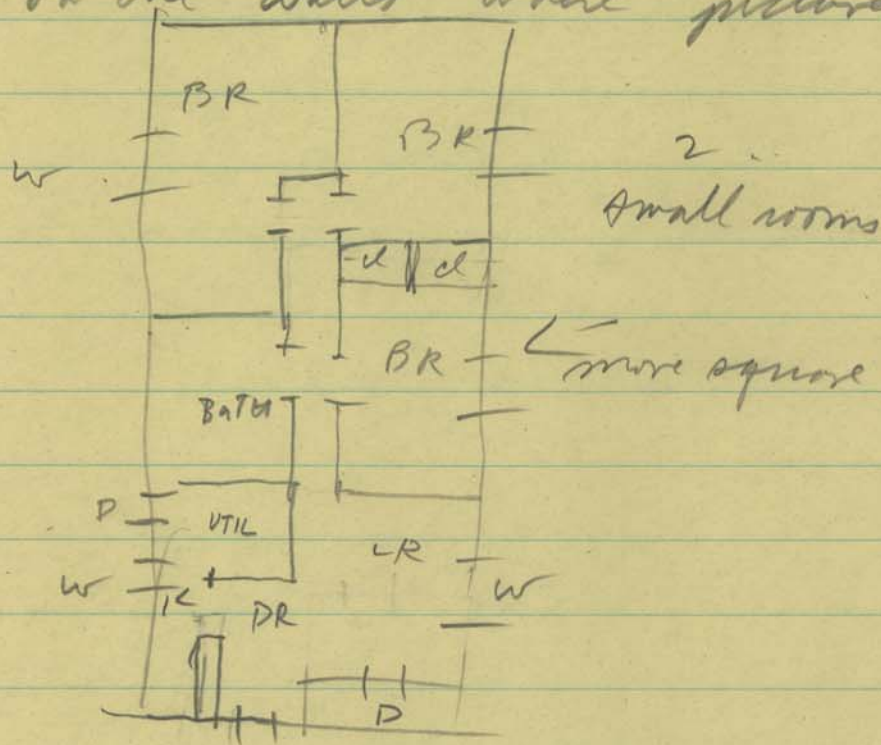
exterior doors: metal w/ translucent
glass panel



The interior walls in the living room,
dining room and bedrooms are
panels of random-width vertical
enameled steel of colored light
gray. The panels in the bathroom
and utility room are square,
c 18" - 25". They fit together somehow.

The interior walls are about 4-5"
thick. It is not known whether the
steel panels support the structure
or are only wall coverings. It
is not known what is beneath the

panels. The walls are bowed somewhat in places. Picture hanging is difficult, and small the holes of can be seen here & there on the walls where pictures used to hang.



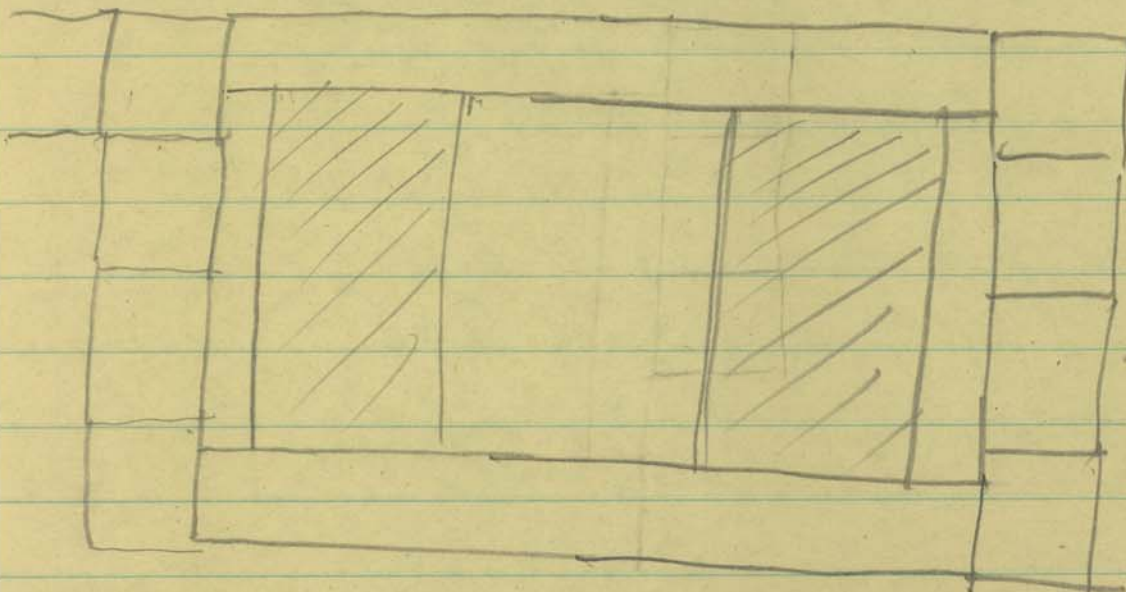
The walls and ceiling require no maintenance, simply regular washing to keep the surface clean. The marine corps maintenance crew is routinely renovating some of the house interiors by painting the walls & ceiling, changing the closet and kitchen cabinet doors (steel) and replacing them with wood. They have also removed the dark-colored vinyl baseboards & replaced them with wooden baseboards painted white. Overall, the

repairs have improved the houses' appearance, though it is not known ^{if} whether the painted panels will require regular repainting now.

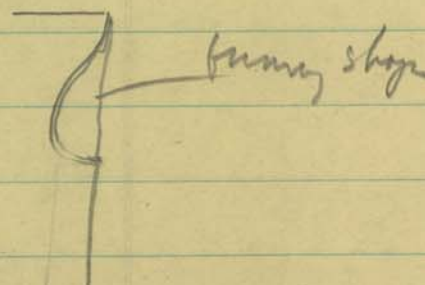
Refer to the
The exteriors of these the Lustron homes are colored different shades of gray, and pastel colors, a pleasing array, which helps break up the monotony of the similarity of these houses.

The windows ~~are so~~ consist of a single, large fixed pane with flanking casement windows that crank open.

The windows are surrounded by



specially-shaped panels to fit the contours of the window



furnishings

This house is one of perhaps 40 or 50
such houses built on Quantico
Marine Base in 1949 and 1950
by The Lustron Corp.

The designer of the house etc.