

Recent Photos of Manassas AFS, VA

BULL RUN REG LIB

October 1998

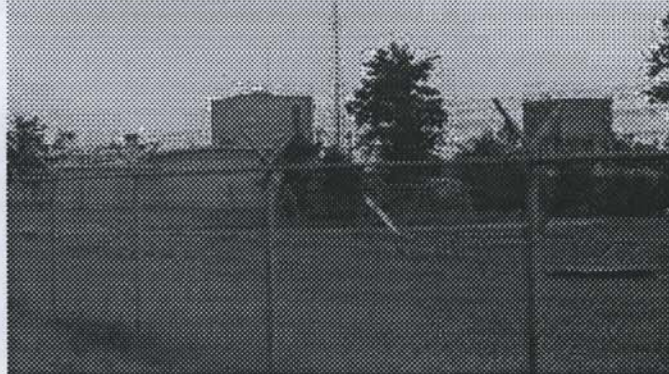
Photos and notes by Tom Page
Email: tepage@erols.com

The former Manassas AFS, VA (Z-55) is situated in Independent Hill, VA, at the intersection of Joplin Road (VA Rte 619) and Aden Road (VA Rte 646) (southwest quadrant), on a tract of land that originally was the northeast corner of the Quantico Marine Base. Today, the Prince William County (VA) School Board and the Independent Hill School use some of the former Air Force buildings. Several commercial radio towers are also situated on this site today. The GATR site (used after the radar mission ceased, as site R-20, stayed open until the mid to late 70's) was located about a half mile or so west of the main site, with access from Aden Road. The GATR site today is used by a Government agency, and sports several large dish antennas in its antenna farm.

View of the radar area from the southeast side (looking northwest), as seen from Joplin Road.



View of the radar area from the east side (looking west-southwest), as seen from Joplin Road.



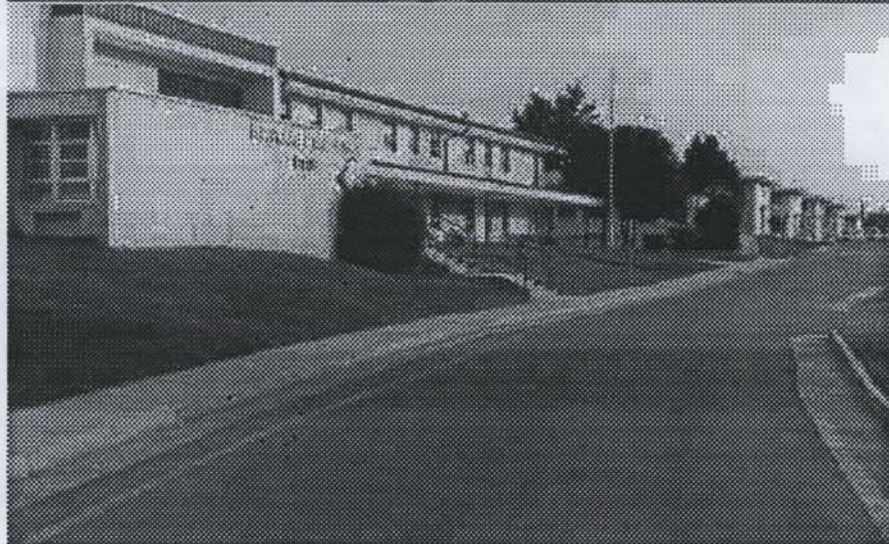
Housing area, immediately at the intersection of Joplin Road (VA Rte 619) and Aden Road (VA Rte 646); the former AN/FPS-35 tower is in center, background. Looking ~ south-southwest.



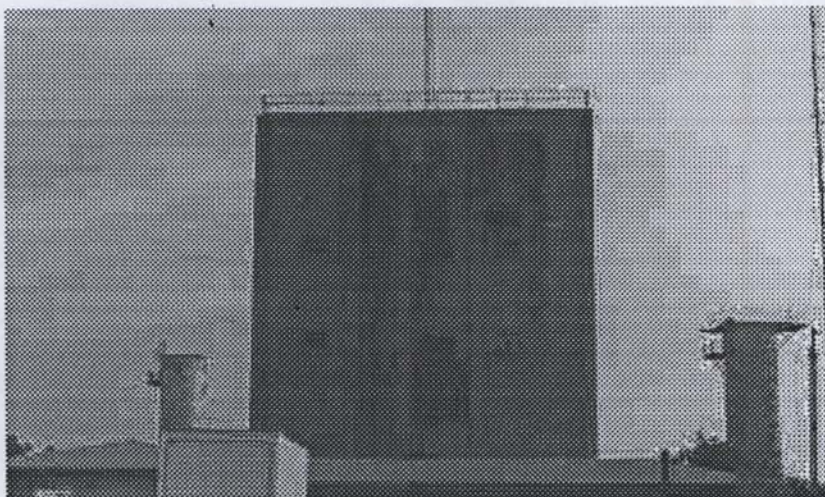
Housing area, viewed from Aden Road, looking roughly east-northeast.



Former administrative area, barracks. Radar towers (not shown) are to right (west).



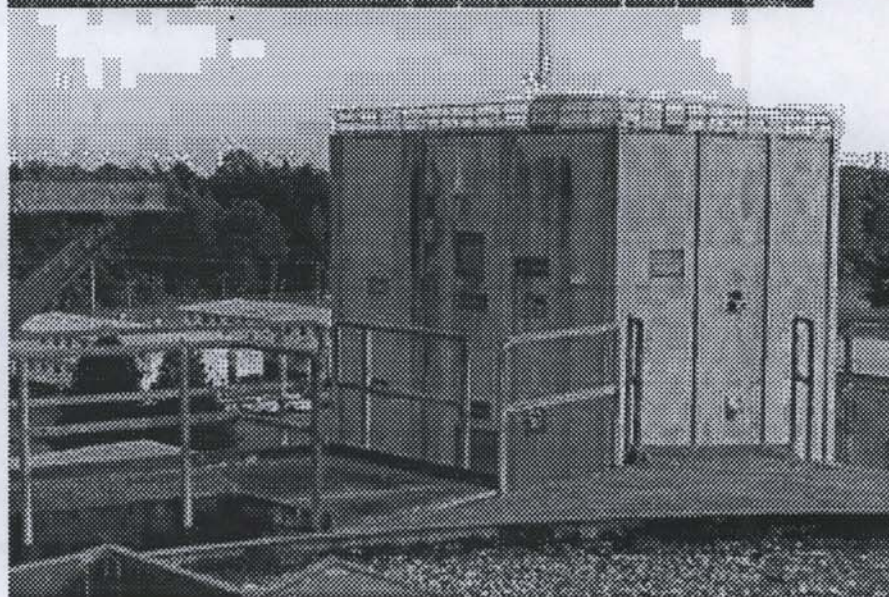
AN/FPS-35 search radar tower is in the center. The older radar towers (that look like "lighthouses") on either side of the AN/FPS-35 tower held an AN/FPS-6 heightfinder radar and an older search radar (AN/FPS-3? AN/FPS-8?), but it is not obvious which tower supported which radar type. [Manassas AFS might have been the only USAF radar site to use these types of towers (??).]



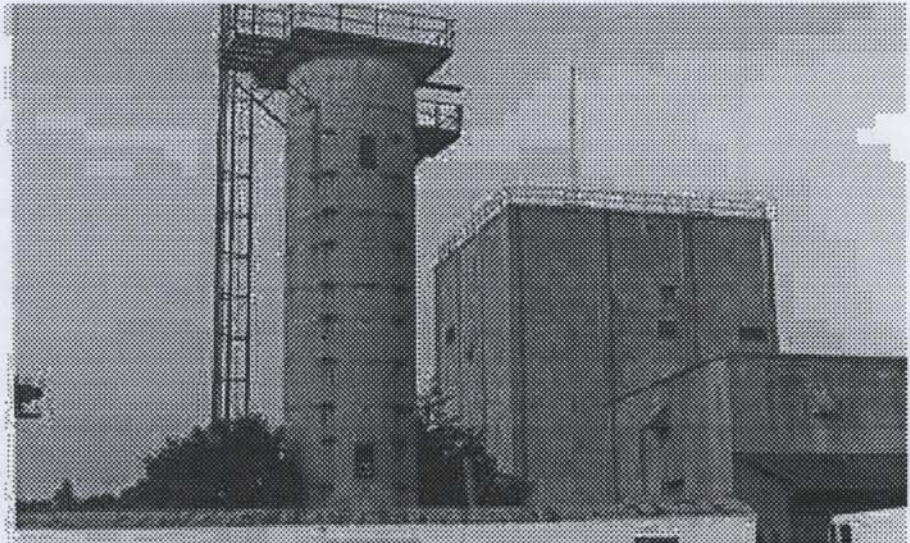
AN/FPS-26 heightfinder radar tower, viewed from northwest side; AN/FPS-35 tower in the background.



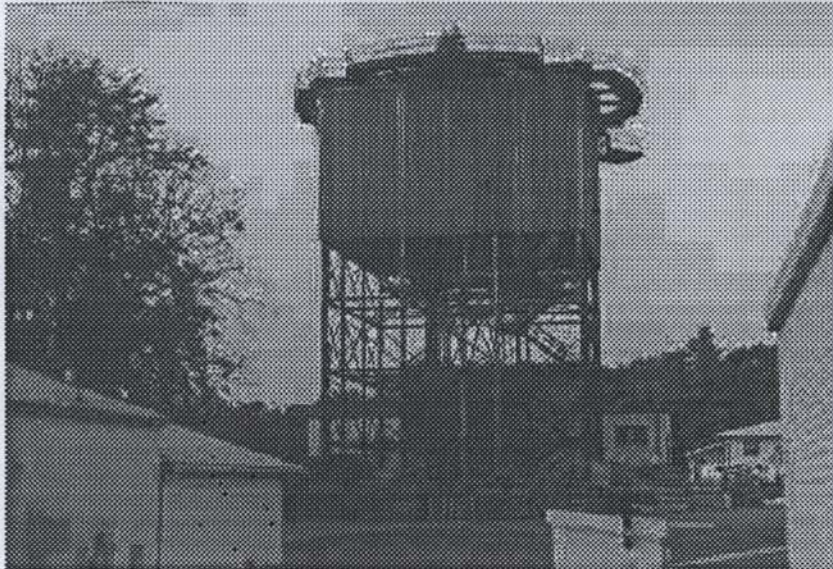
AN/FPS-35 search radar tower, as viewed from the top of the AN/FPS-26 heightfinder radar tower (note catwalk, foreground). [The old heightfinder radar tower is home now to numerous pigeons, and apparently has been for quite some time, as evidenced by the foot-deep layer of droppings inside the work-center area!]



One of the old "lighthouse-shaped" radar towers (for AN/FPS-6, -3, -8 ??), with AN/FPS-35 search radar tower in the center, and the old Operations building to the right.



AN/FPS-26 heightfinder radar tower, viewed from the south side.



[Return to Search Page](#)
[USAF AC&W Home Page](#)