

Mrs. Benny M...
 Oak St. Carpenter shop

32 5/8"
 30"
 32 3/8"

opening?

275'

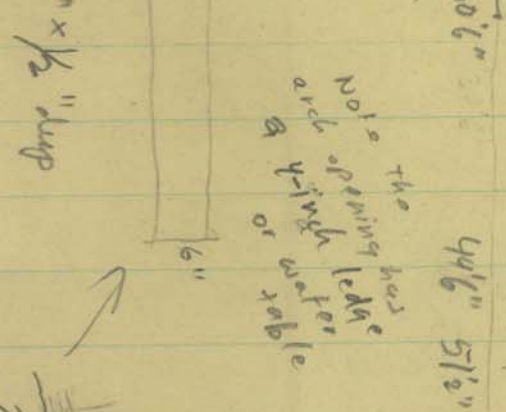
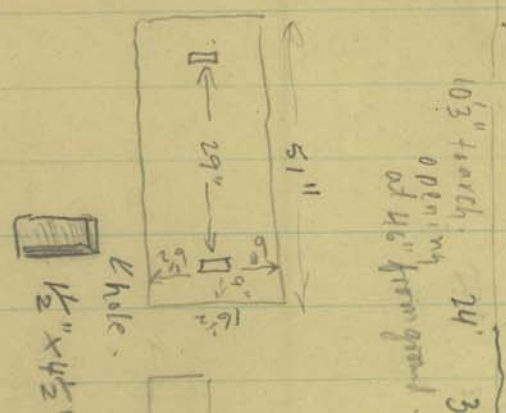
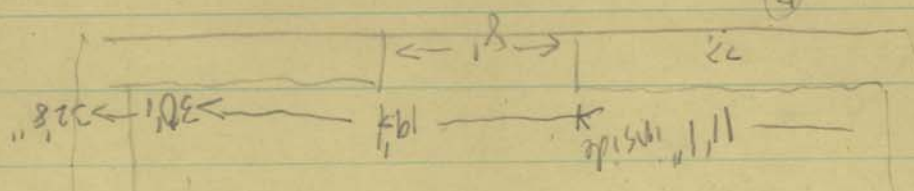
opening

4' 1" 1/2
 6'
 (A)

The door in the upper edge
 arc was prob. a upper edge
 arc was prob. at the same boards
 rectangle. of some boards
 of arch. of tong + painted red.
 leaded + painted red.

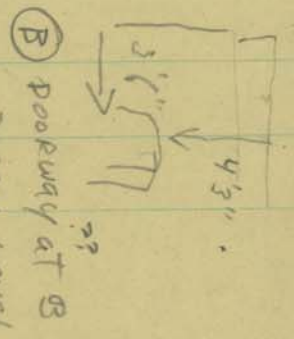
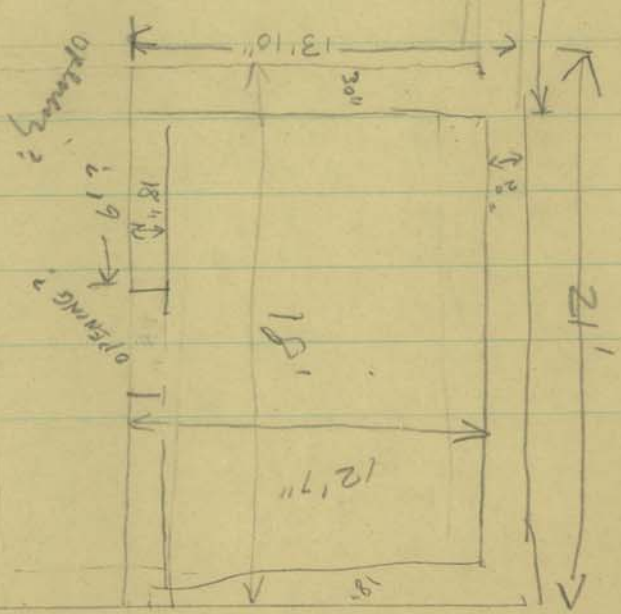
2 pieces of wood line
 curved on the inside
 of the inside section
 of the circular joints
 1" 6" nailed into masonry
 La. round leaded over out
 to be kept over the
 59 m. of lead out edge
 which is the side

well-break
 Stone of (A)
 wall?



to end of arch opening

65
 35 1/4
 75 3/4
 end.



C 4' 3" down from plate or wall. (top.) could be later painted opening.

4-11-80