

Martin  
House

Martin  
7643 Chestnut?

Bought in 1975 from Houston Darnell

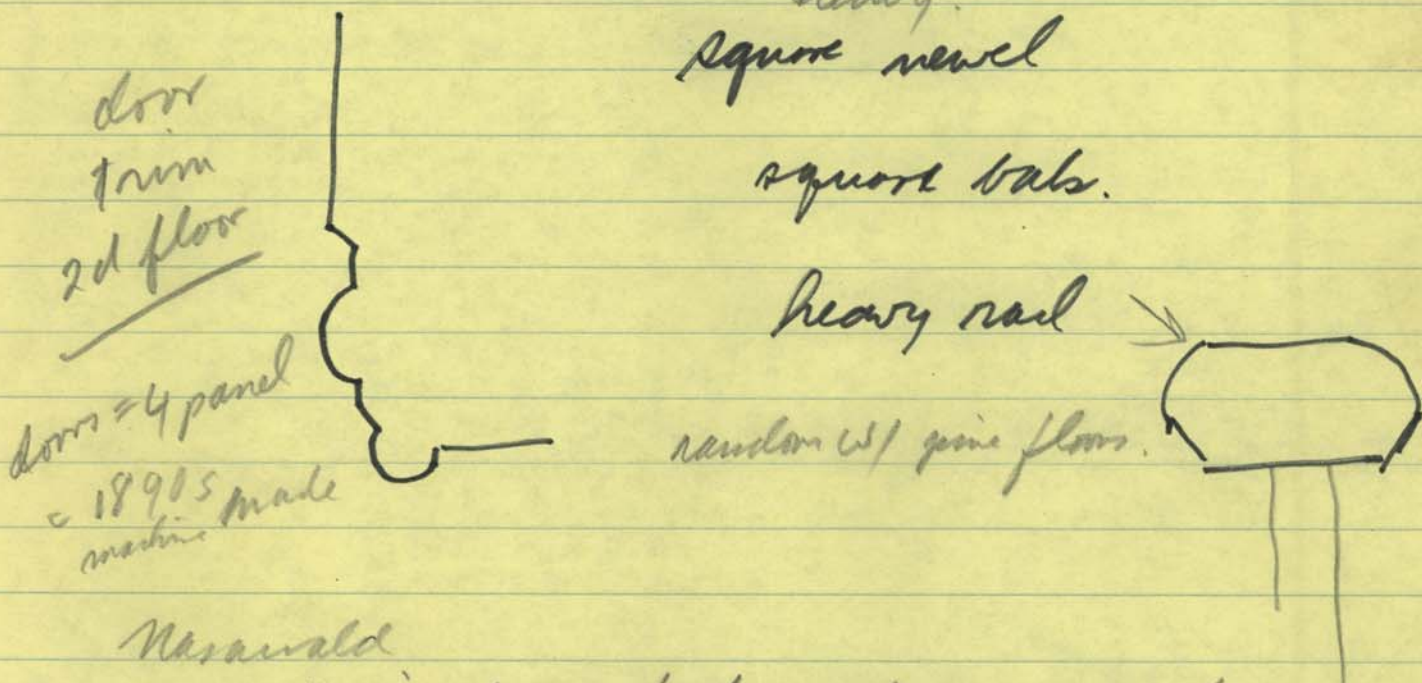
who got it from Ben Marks in c. 1971.

Ben Marks bought it in c. 1951.

Prop. subdivided in 1949. ~~off~~ from Goldrich

who got it from Breeden.

78,000 + sq ft.  
c. 2 acres



Masawald

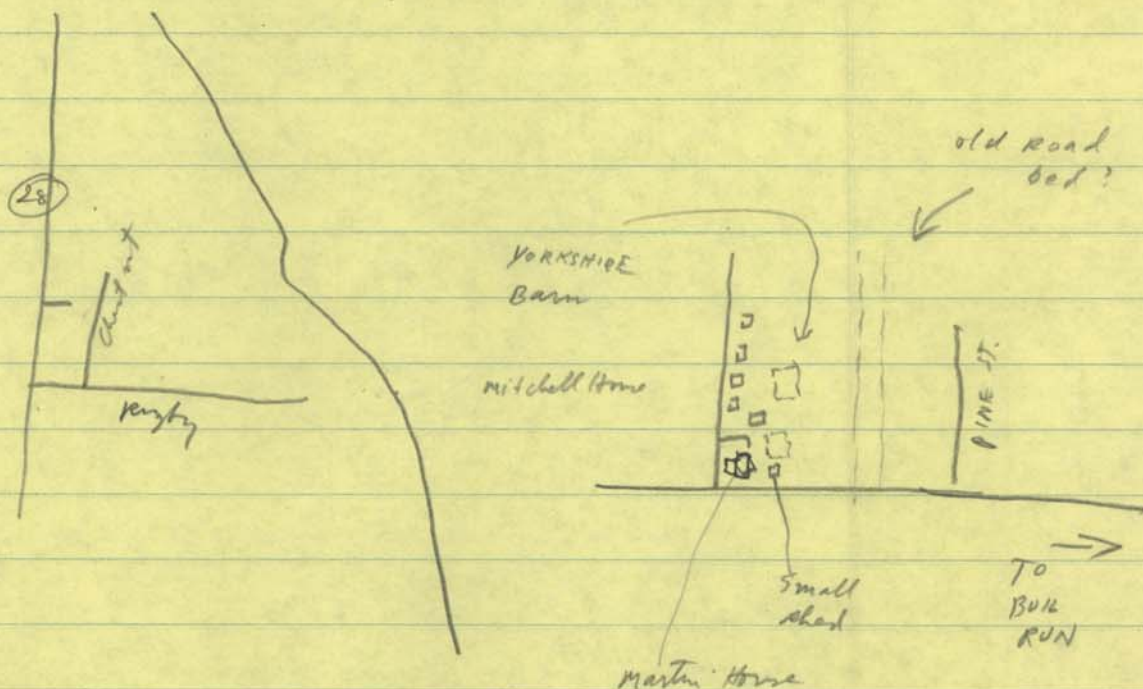
Union forces kept records of survey done  
on land that had been occupied -  
Bldg. standing at the time land was returned.



Mr. Mitchell little yellow house. been in the  
area for a long time. 17 Apr,

Tom Whitehorn. found small brown glass bottle  
w/ cork stopper with hole -  
no basement, could space only.

small frame shed or garage parts on found,  
part cinder block & part field stone,





Official Military Atlas of the Civil War.

Dwin, Perry et al

McLean's ford, Va. 7, 1

Blackburn's ford. 3, 1; 7, 1; 100, 1

Plate VII, 1. Map of northeastern Virginia + vic. of Washington  
Scale 1" = 2 mi.

J. J. Young + W. Hesselbach 1 Aug 1862.

McDowell's division. Hdqtrs.

Surveys for military Defenses.

IV, 1 = Battle at Bull Run. 21 Jul 1861. (Blackb. Fd.)

III, 2. MANASSAS area Battle. c 21 Jul 1861

2000' = 1"

C, 1 = Central Va., showing Genl. U.S. Grant



12/22/79

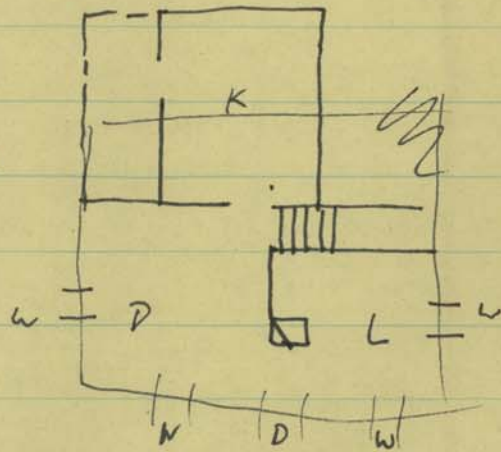
## Charles Martin's House

clapboards covered recently w/ aluminum siding.  
balusters & rail added to porch  
interior gutted

Roof: common rafters circular sawn  
metal roof

back part 2-stories of house a later  
addition - see where roof of main house  
opened & sheathing cut

House formerly had architrave  
moulding around doors,  
windows. This has ~~been~~  
been replaced except NE  
~~the~~ room on 2d fl.



windows 6/6 ? replacement.  
repro chair rail ~~is~~

Charlie Martin, lives in the home built on  
the site of the old McLean House.

is sometimes at home during the day.

Local historian — Van Loan Macawald  
believes the house is on the McLean  
House site.

House has a title search. prob back to  
1940s.

Who owns Barn?

Charlie

Annandale.



Charles W. Martin

7643 Chestnut St.

121-13-BKD-210

prev. owner: Houston P. + Ruth Payne Darnell

1.8047 A.

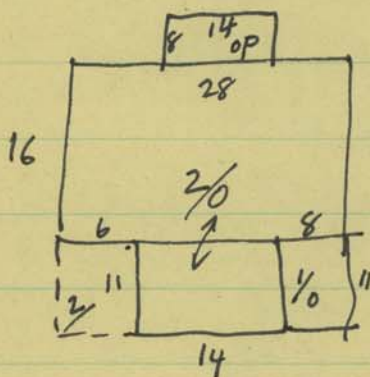
"Year built": 1910

DARNELL ACQ.

DB 140 P.206

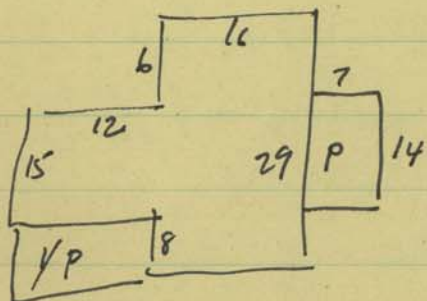
MARTIN ACQ.

DB 794, P.550



1975?

or.



(1970)