

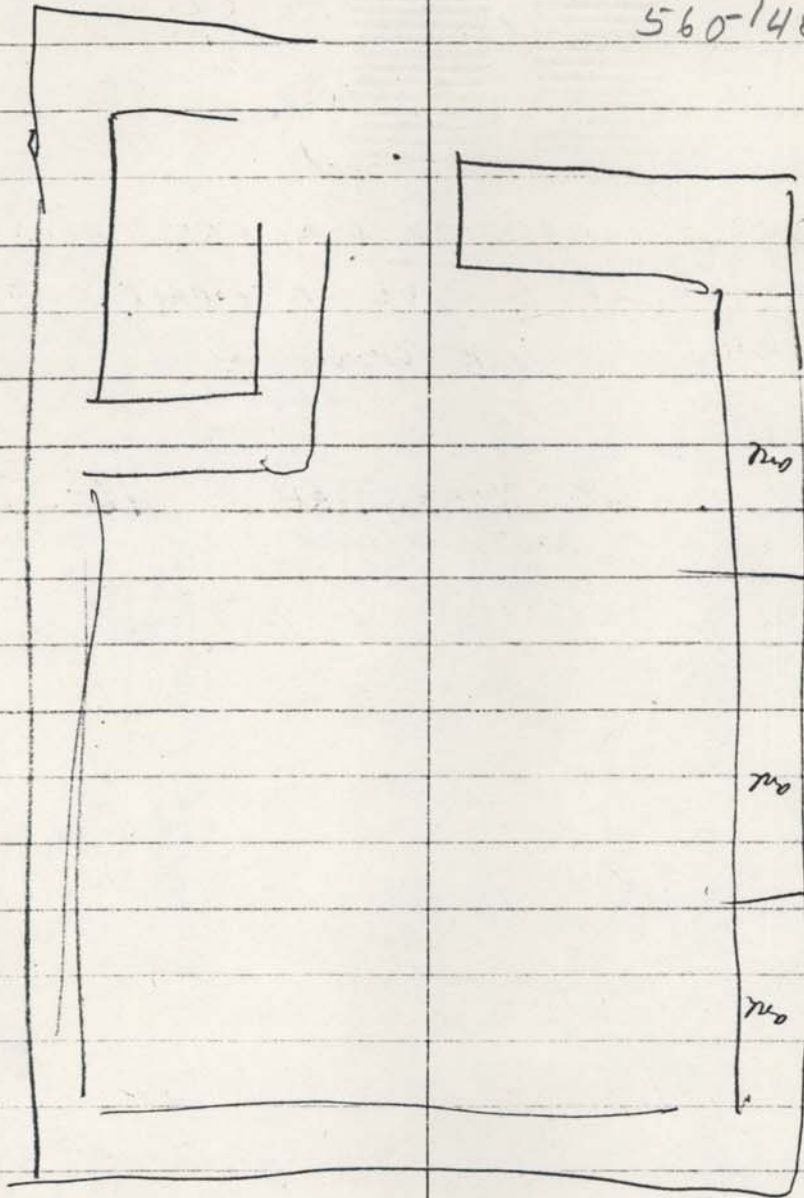
YORKSHIRE BARN

stone = 2'7" thick

#17

560-2888 W.

560-1484 H.



back ramp measures 230 x 50



7/7

FRAME HOUSE AT YORKSHIRE

Tomy Whitehorn 76-276

7643 Chestnut St.

Yorkshire (Manassas) 22110

tel. NO NO. IN BOOK

CORNER OF CHESTNUT + RUGBY. PACES N.E.

Yellow asbestos siding. EL OR T-SHAPE. 2 ST

WINDOWS 6/6 STOVE CHIMNEYS

MCLEAN

Barn, AT YORKSHIRE. 76-274

Arch = 7'6 high to inside of  
13' wide on inside



Ronnie Stanley

7639 Chestnut St.

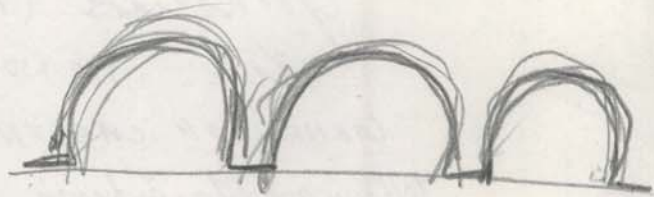
Manassas (Yorksh.)

Bill Akers

7633 Chestnut St.

size of

1879 - date stone .



$3\frac{1}{2}$  acres.