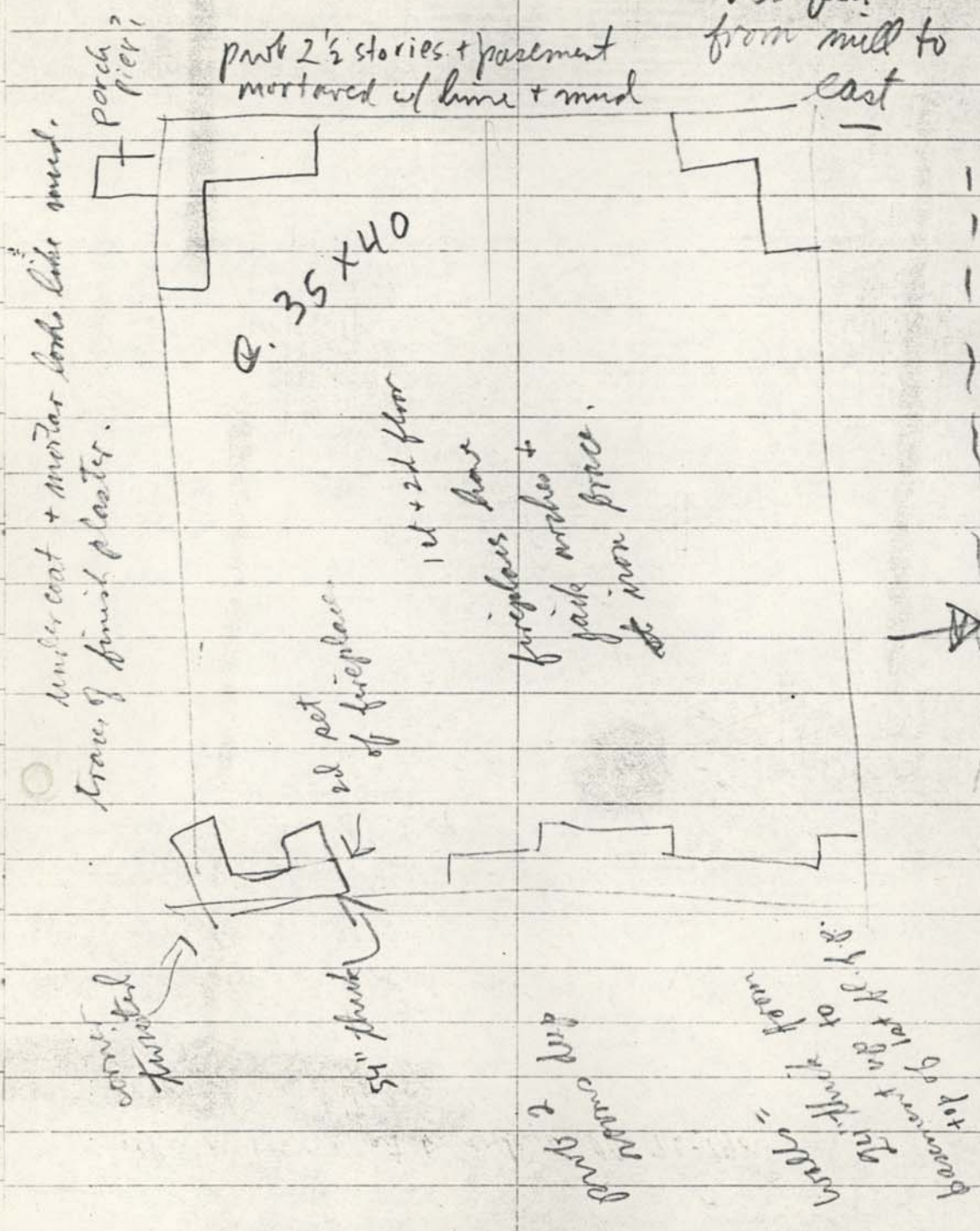


Chapman House Ruins
 "Meadowlands"

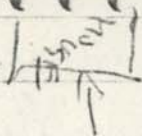
76-197

~ 250 feet
 from mill to
 east

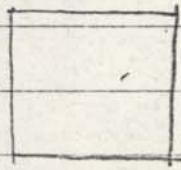
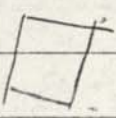


12 | 54
 48

part 2
 2d set
 54" thick
 2d set of fireplace
 1st + 2d floor
 fireplace base
 jacks arches + iron brace.
 under coat + mortar looks like sand.
 trace of finish plaster.
 R. 35 x 40
 part 2 1/2 stories + pavement mortared w/ lime + mud
 Porch pier?
 ~ 250 feet from mill to east
 top of last floor
 2d floor
 1st floor
 1st + 2d floor

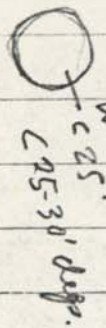


POST OFFICE



300 ft.

Grand Run

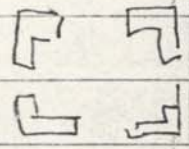


Chaparral House RUINS.
STONE WELLS, or other hole
C 25
C 25-30' deep.

possibly cleared

Even Now cut

Present stream



Chaparral mill
what kind of wheel?

possible
loc. of
mill
stream

mill site.