

main part is
cov. w. kerman siding on north
beaded siding on west + south

1950s addition is cov. w. Channel siding.

south side (front)

2 front doors

trim is beaded flat + architrave

windows 6/6

exterior siding is beaded 5" lap well painted.

shed roofed porch across front supported by

square posts pilasters on front wall though

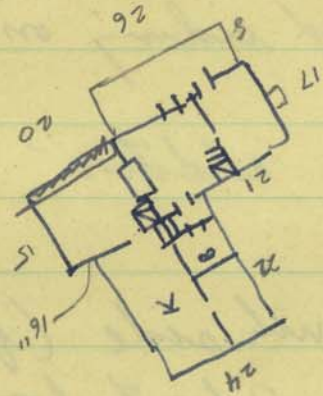
are 1870s or so. with a chamfered edge +

run out steps.

porch floor repl. porch found. is stone.

The chimneys.

46 x
47
22
28
17



47

mill Creek Farm.

Mr. Shim.

754-4637.

orig. built 1795

added 1800s

" mid 1900s.

→ Forsyth Plantation - small graveyard w/ stones
→ Forsyth fam. have papers on house.

Mrs. Conner knows the Forsyths. Ref. to Wise Chapel at Woolsey

Forsyth's place
Morton notes 3 graves.

"OAK SHADE" - VDC GENEALOGICAL
RECORDS.

→ in the corner by a field.

1905

{ King
Bonner
Davis

See map



→ "Homestead" Mill Creek Farm also known as

if 3 Forsyths buried there.

↳ airline pilot owner.

1870 - early 1900s owner of
grove in Worley.

WILMER HATCHISON - Big guy