

HISTORIC SITE FILE: *MILL PARK*
PRINCE WILLIAM PUBLIC LIBRARY SYSTEM
RELIC/Bull Run Reg Lib Manassas, VA

MILL PARK

ON HAYMARKET AND
HICKORY GROVE ROAD

3 miles of Haymarket, Va., 5 miles Gainesville and
Lee Highway, 15 miles of Warrenton, 20 miles
Leesburg, 14 miles Middleburg



A BEAUTIFUL 830 ACRE ESTATE
Subdivided into several Tracts, will be
OFFERED to The HIGHEST BIDDER

At Auction, Monday, Oct. 28th
10:30 A. M.



"The Name That Justifies Your Confidence"

PETERSBURG, VA.

Offices

WINSTON-SALEM, N. C.

*Copied from original owned by
Ronald R. Turner, Manassas, VA
19 Feb. 2003*

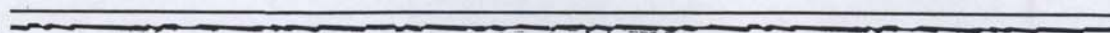


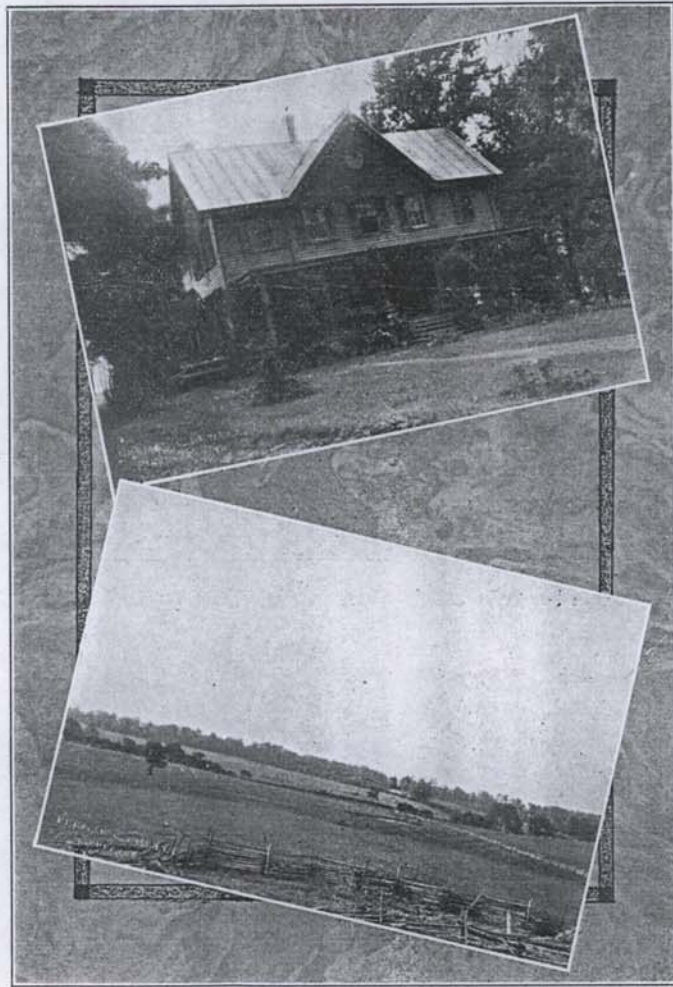
This thrilling scene is often enacted in the country surrounding Mill Park.

Announcing—

Auction Extraordinary!

Mill Park is a magnificent property in one of the prettiest sections of the state. This property consists of 830 acres, of which 110 are under cultivation, 350 in grass, and 330 in woods land. This fine farm will be offered at auction, Monday, October 28th, at 10:30 A. M. It has been subdivided into a number of tracts, and you will have an opportunity of purchasing any part of this splendid property at that time.





Mill Park

Man and nature have conspired to make Mill Park a beauty spot. Here you find beautiful shade trees, well cultivated fields, pretty streams, and in the background magnificent mountain scenery — scenes that will delight the eye and are restful to the body. To live at Mill Park is to enjoy living.

The beautiful lawn is well set with shade trees. The house is a frame building, having 16 rooms, storeroom, pantries; also a large cellar, and a third floor containing an attic. A new roof has recently been put on this residence, and it has a heating plant in good condition.

You can only Appreciate

the beauty of this property by a
physical inspection . . .

Look it over Today !

MILL PARK Subdivided

Three miles of Haymarket, five miles Gainesville, 15 miles Warrenton,
on the Haymarket-Hickory Grove Road

At Auction, Monday, Oct. 28th, 10:30 A. M.

Mill Park is a well located estate in Prince William County. It has been placed in our hands for subdivision and sale at public auction. The sale will be conducted on the premises, rain or shine, and everyone is cordially invited to attend.

This splendid property has been subdivided into several small tracts. Purchasers will have the choice of buying any tract they wish and can select the part that appeals to them most. Cleared land, grass land and woods land in good proportion permit subdivision, so that complete farm units can be developed on the various tracts. The entire property covers approximately 830 acres.

The home is attractive, being well set on a beautiful lawn with shade trees. It is a frame building, having 16 rooms, a heating system and ample pantry and closet space. It has a large cellar, and the third story is an attic. It is of wood construction and a new roof has been recently put on. Fine homes are characteristic of this section and the home place in Mill Park fits in well with the surrounding country. Look it over today and visualize how it will look when you add the touches that reflect your taste.

Fine grazing land that is particularly valuable for stock raising is always in demand. There are 350 acres in grass land in Mill Park.

Fertile fields comprising 110 acres, producing good grain crops, can be seen in pictures in this booklet, but pictures cannot do justice to a property that has such natural beauty and advantages. Nothing less than a detailed personal inspection permits proper appreciation of Mill Park.

Every field has running water. Ideal location for dairy farm. Within easy reach of several towns which will supply a ready market for dairy products. There is plenty of cord wood for all farm purposes. A large barn with basement, and other outbuildings.

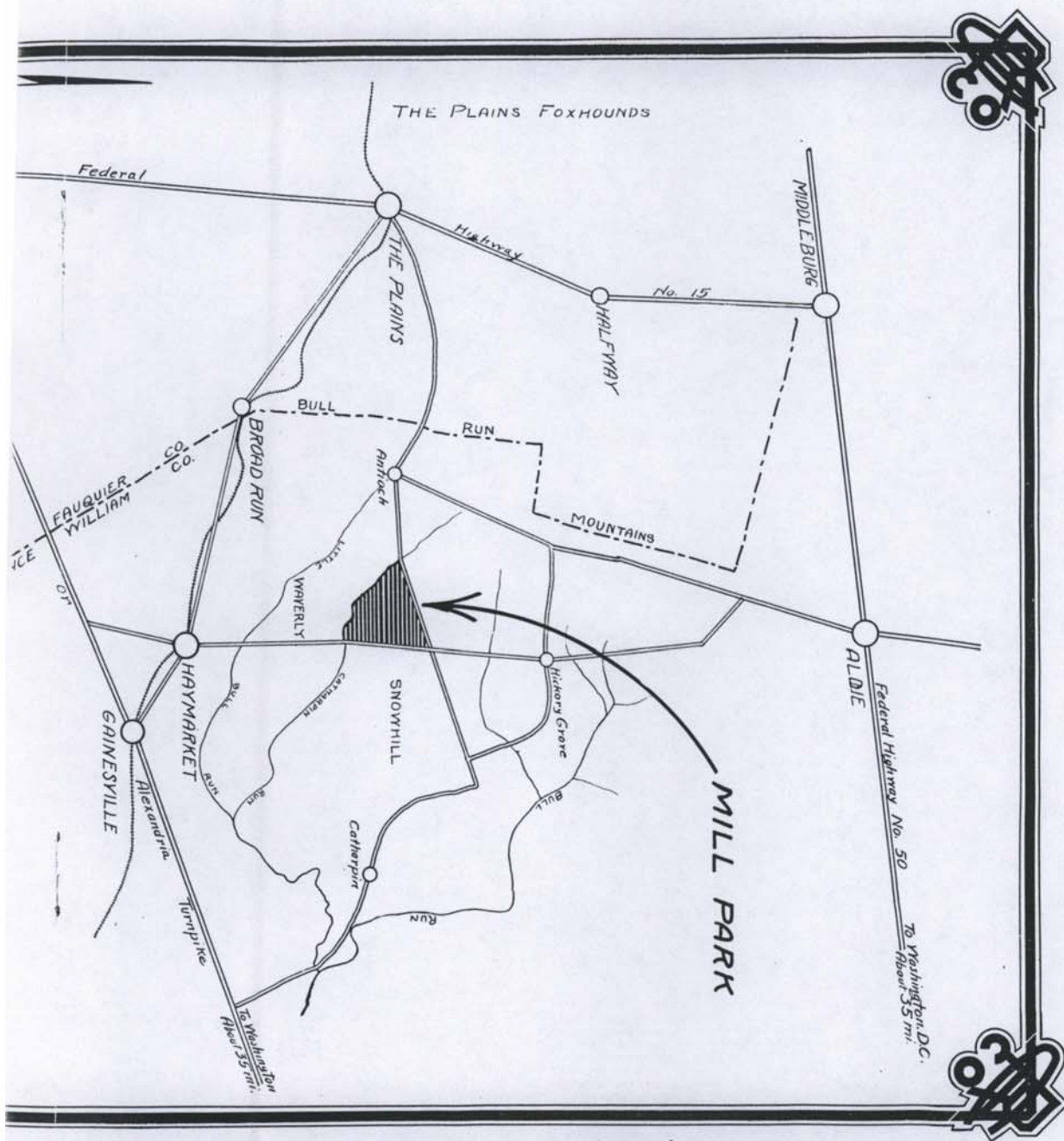
You appreciate the value of good land in the section between Warrenton, Virginia and Washington, D. C. Wealthy families from the North, seeking a climate that permits them to enjoy the freedom of outdoors all the year around, are settling in this section. Fine homes are all around. The environment is ideal. The future of Mill Park is indeed bright. Now is the time to buy when your price does the buying.

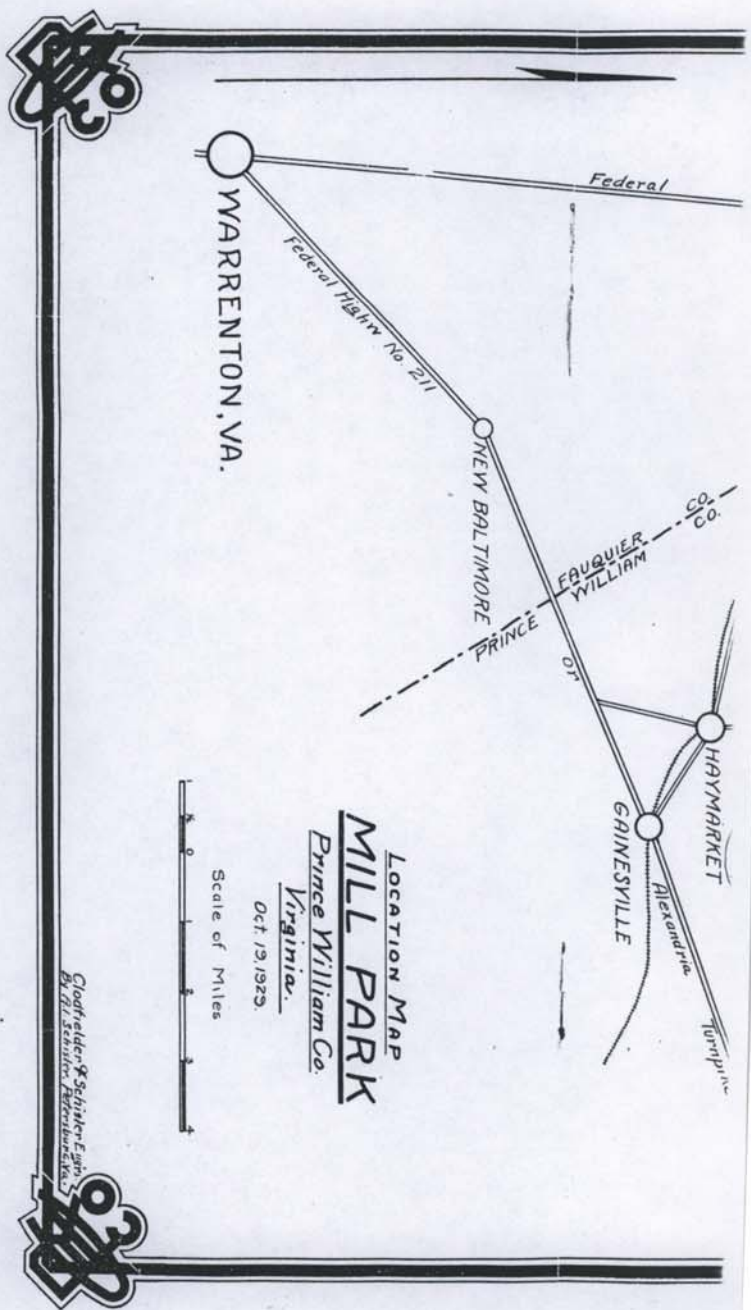
Easy terms make the purchase of Mill Park even more attractive. Inspect the property today—buy it

Monday, October 28th, at 10:30 A. M.

SALE CONDUCTED BY



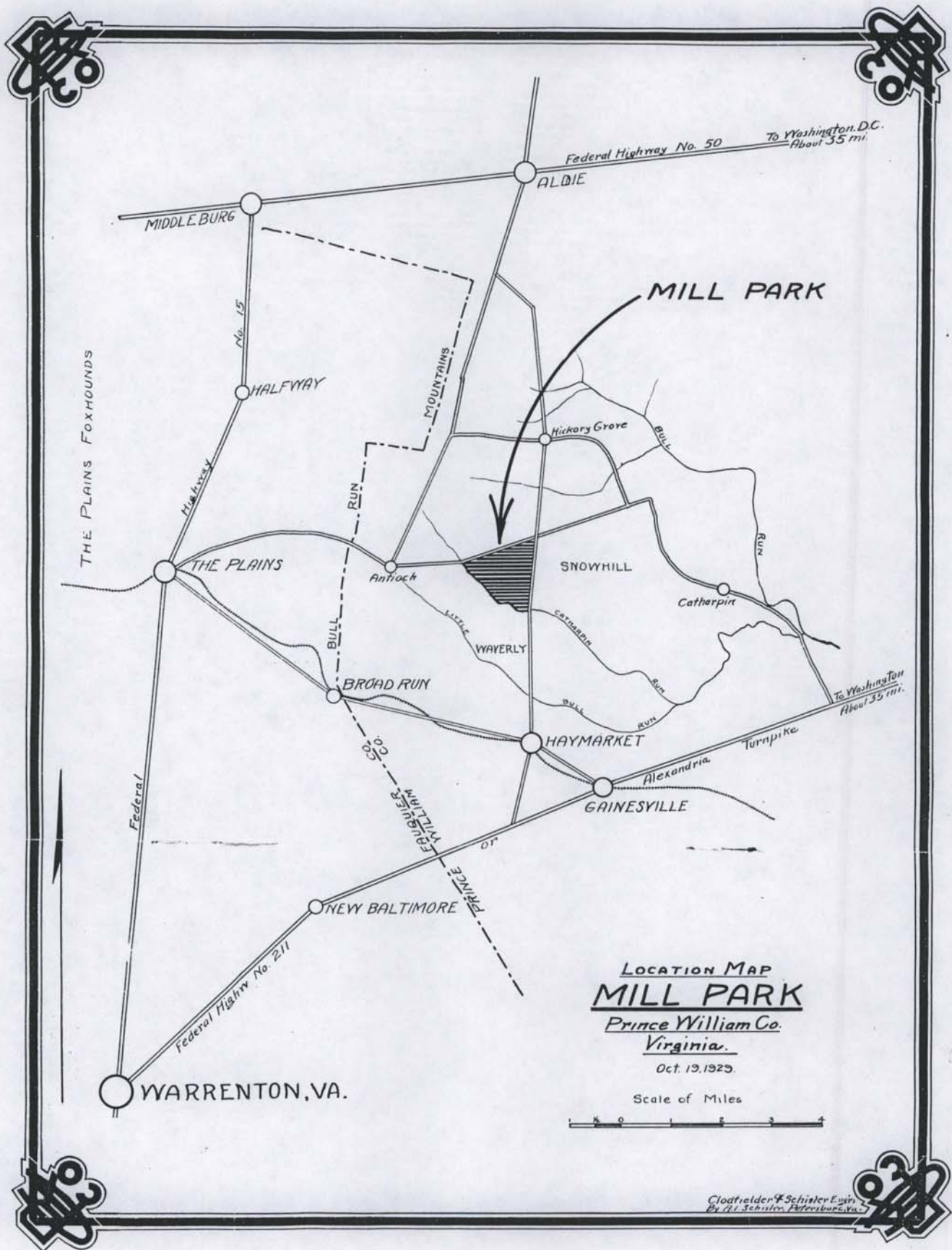




Study the map above and note how easily Mill Park is reached. In close proximity to Warrenton, Leesburg, Gainesville and within a short run of Washington, D. C.

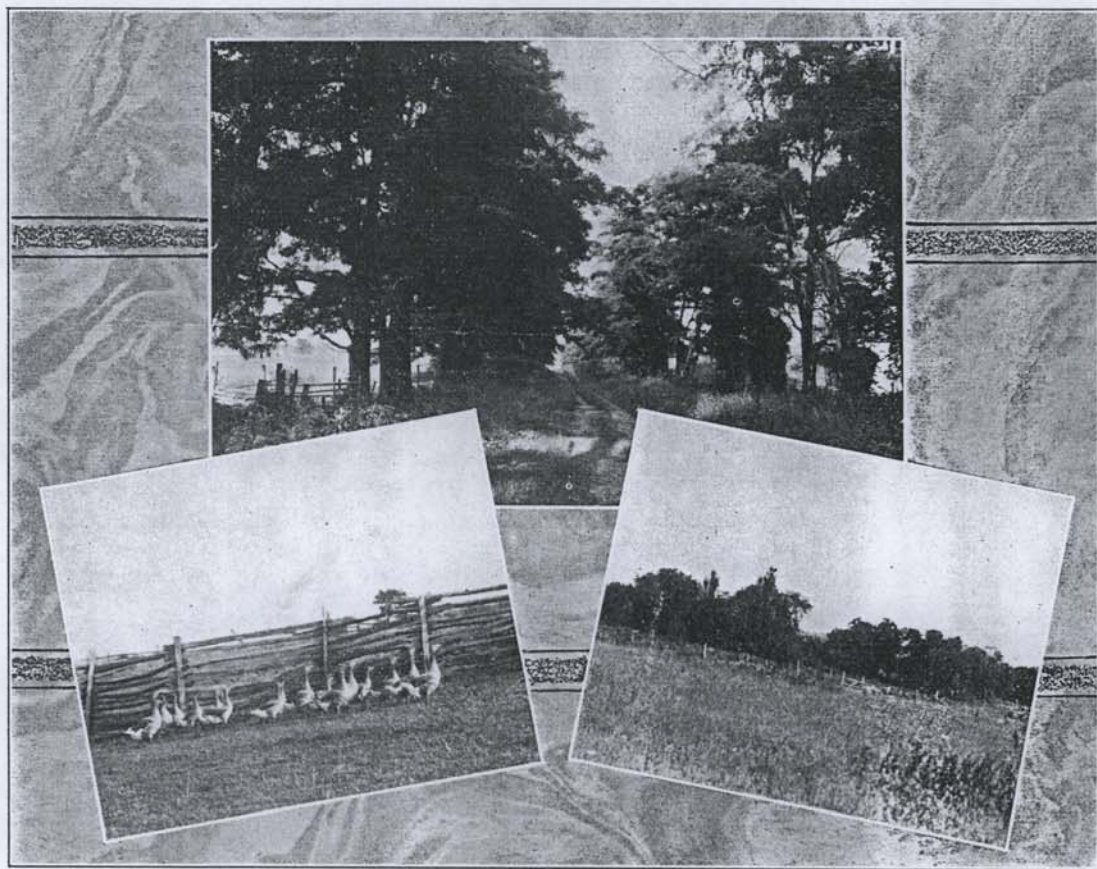


THIS FINE PROPERTY AT AUCTION
MONDAY, OCT. 28th, 10:30 A. M.



Study the map above and note how easily Mill Park is reached. In close proximity to Warrenton, Leesburg, Gainesville and within a short run

CW - Leesburg, D.C.



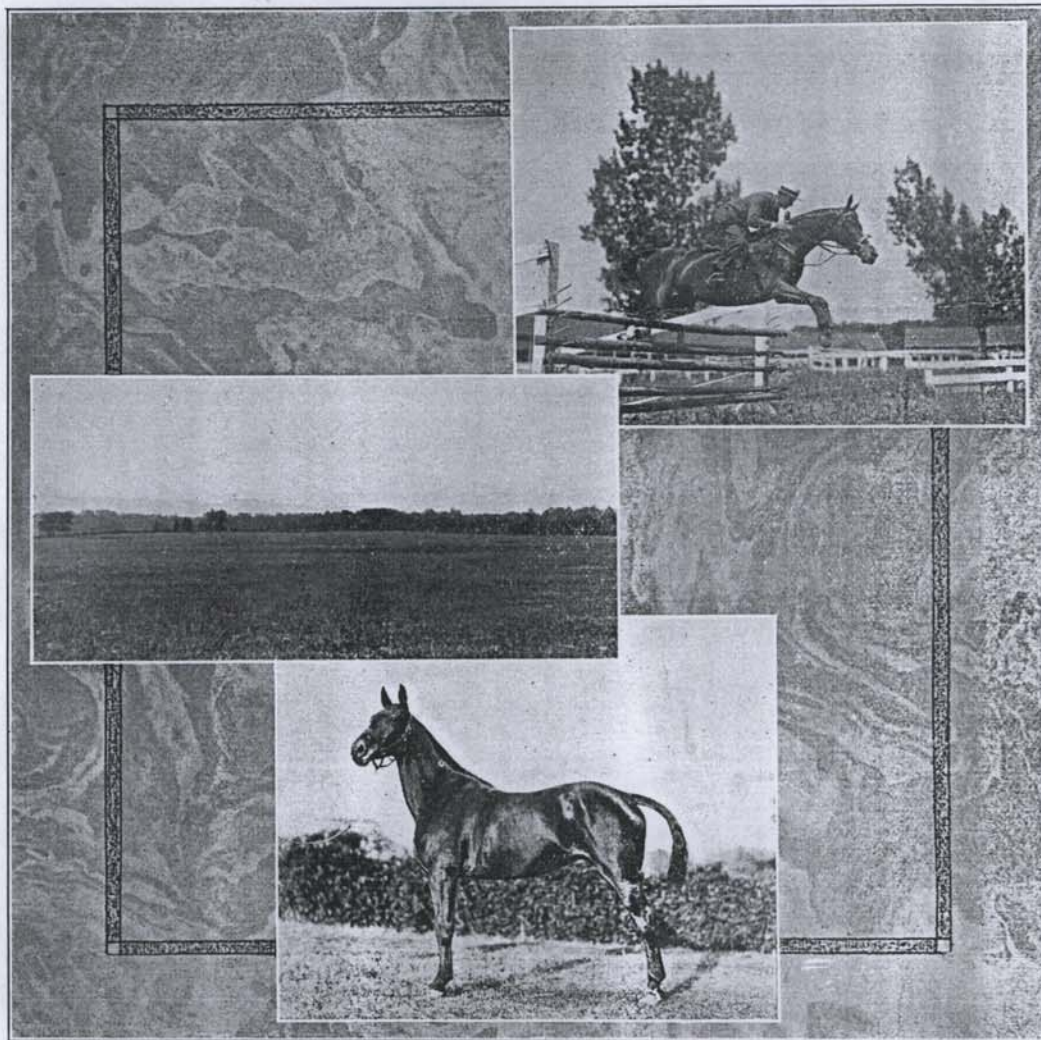
Scenes at Mill Park.

Mill Park comprises 830 acres, more or less

.... of excellent land, of which 110 are cleared, 350 in woods land, and 350 in grass land. It is a splendid part of the state and is very accessible, being within three miles of Haymarket, five miles of Gainesville, 15 miles of Warrenton, 20 miles of Leesburg, 14 miles of Middleburg. Good highways traverse this section of the country and are easily reached from Mill Park. Five miles from Lee Highway, about eight miles to the Jackson Highway, and only a short run from Washington, D. C.

Mill Park offers a wonderful opportunity for a dairy farm, is in a stock raising section, and the cleared land is in a high state of cultivation. There are approximately 11 acres covered by an orchard. Running water in every field. Large barn with basement.

Study the location map in this folder and see how easy it is to reach Mill Park.



The Environment is Ideal

This section of the country is famed for the appreciation of its residents of the finer things of life. Splendid farms owned by people of wealth surround Mill Park, a high-class neighborhood in every way, with delightful social atmosphere.

Fine stock raising country, particularly noted for its splendid horses.

id, and
essible,
5 miles
1 high-
1 from
ackson

stock
There
ater in

reach

*These are the Outstanding Features of Mill Park that
you will see when you make your inspection.*

Look it over today and plan to attend the auction sale

Monday, October 28th, at 10:30 A. M.

In the event the weather is inclement, sale will be conducted indoors.

LOCATION:

Excellent. Three miles of Haymarket, five miles of Gainesville, 15 miles of Warrenton, 20 miles of Leesburg and 14 miles of Middleburg. Within short run of Washington, D. C.

ACCESSIBILITY:

Good roads lead into State and Federal Highways only a few miles distant.

NEIGHBORHOOD:

A splendid neighborhood with many fine estates in the immediate vicinity.

BUILDINGS:

Sixteen-room residence, large barn.

SOIL:

Fertile, particularly adaptable to the cultivation of grain crops.

STOCK RAISING:

Good grass land, furnishing good grazing. Thoroughbred horses such as are shown on Page seven are bred in this section.

RELIGION:

Churches near by.

EDUCATIONAL:

Schools near by. The school system in this state has developed most rapidly in the past decade.

Study the location map. Ask our representative, Mr. O. W. Currin, at the Warren Green Hotel, Warrenton, to furnish you with subdivision maps showing Mill Park. Remember this fine property will be offered at Public Auction

Monday, October 28th, at 10:30 A. M.

SALE CONDUCTED BY

Atlantic Coast Realty Co., Agents

"The Name That Justifies Your Confidence"

PETERSBURG, VA. WINSTON-SALEM, N. C.

