

Mt. Atlas.

4024 Mt Atlas Lane

Hazimarket

owner Mrs. Pauline Padgett.

Built 1795,

Willis Foley purchased in 1835. Willed it
to his daughter Eliza Foley.

Part of Carter's Bull Run Tract.

presently on 10 acres. orig. 47A.

2 1/2 + 2 story frame E shape house
on stone foundation
with stone ext. end chimney
side entr. w overhead 5-pane transom.
windows 1st floor 9/9
2d " 6/6.

1 story porch runs half way across
front from center to entr. at rt.

3 round columns on concrete? base
at front; 2 semi-circle engaged columns
Modillon cornice

asbestos/tar shingle roof.

2 dormers in roof windows 4/6
plain gables dormers added post 1900

painted cream yellow w/ brown trim.

Fair cond. w/ some serious deterioration

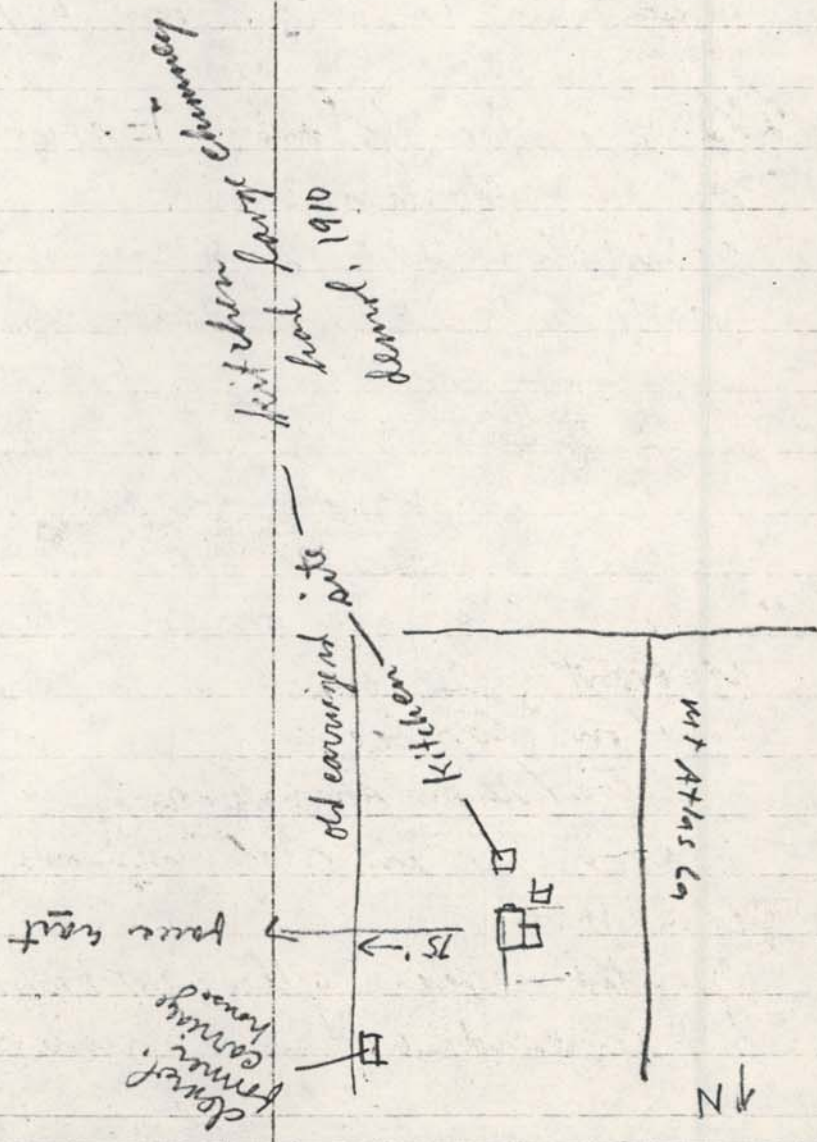
11/9

76-15

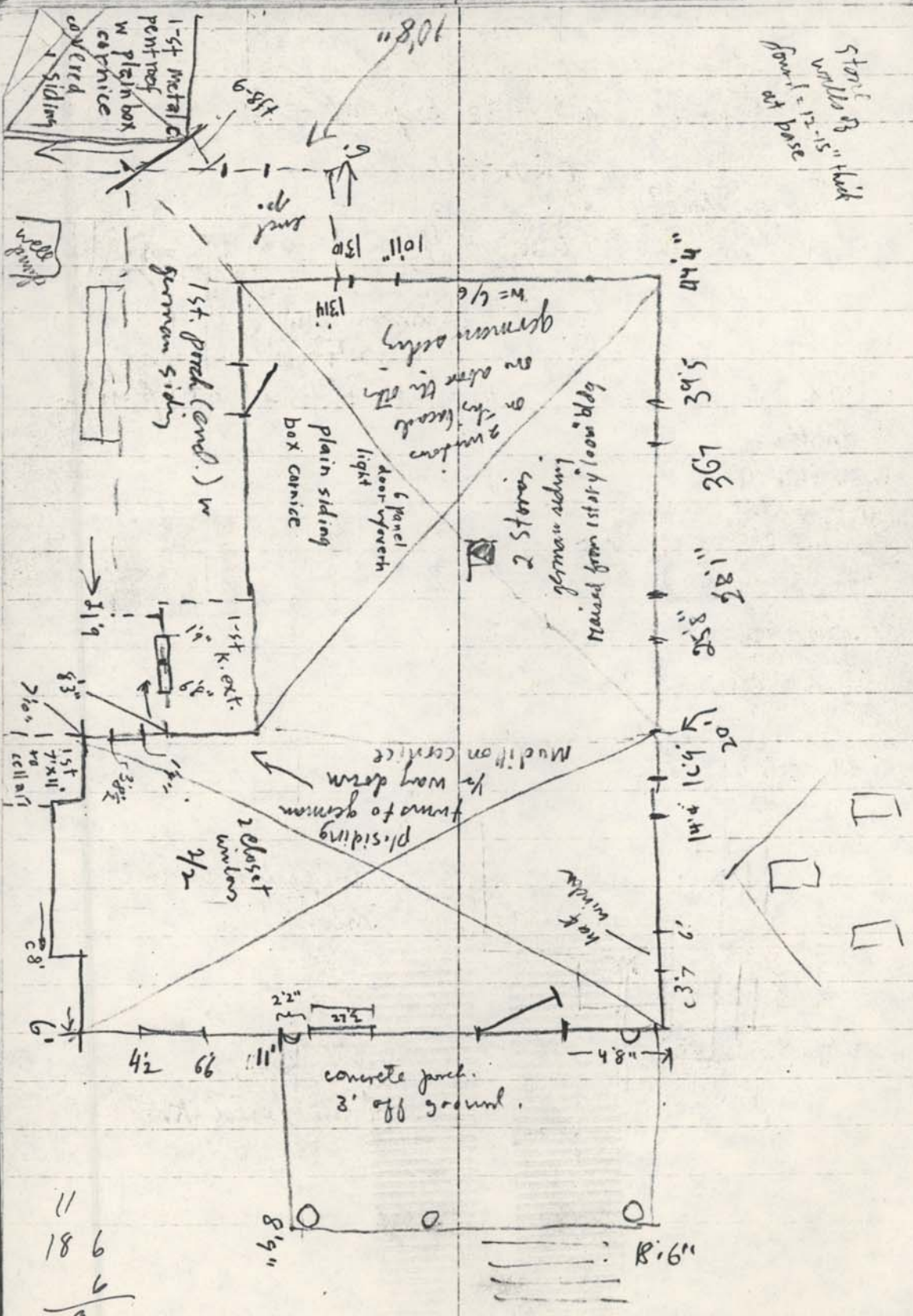
VHLC ✓

stone

upstairs right = gentry



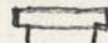
Start of 8" thick
 walls of 12-15
 ft from base

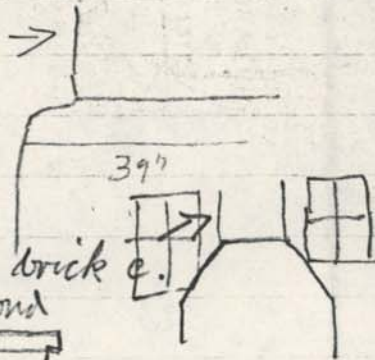


chimney stack 38" deep at →

quartz stone?
white mortar w/ bits of
sand + shell in it

1 water table

30" from
ground
becomes brick
common bond
w/ 1 = 



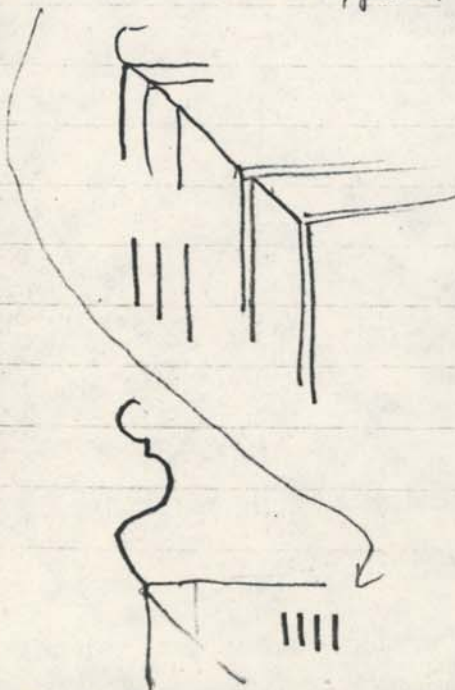
trim is 55" wide beveled + joined at top in
mitered corner

water shield
proj out
about 2"



main door: 4 1/2" x 7'3" without overhead
altogether height = 10'1"

4 vert. marks in exposed section of door lintel

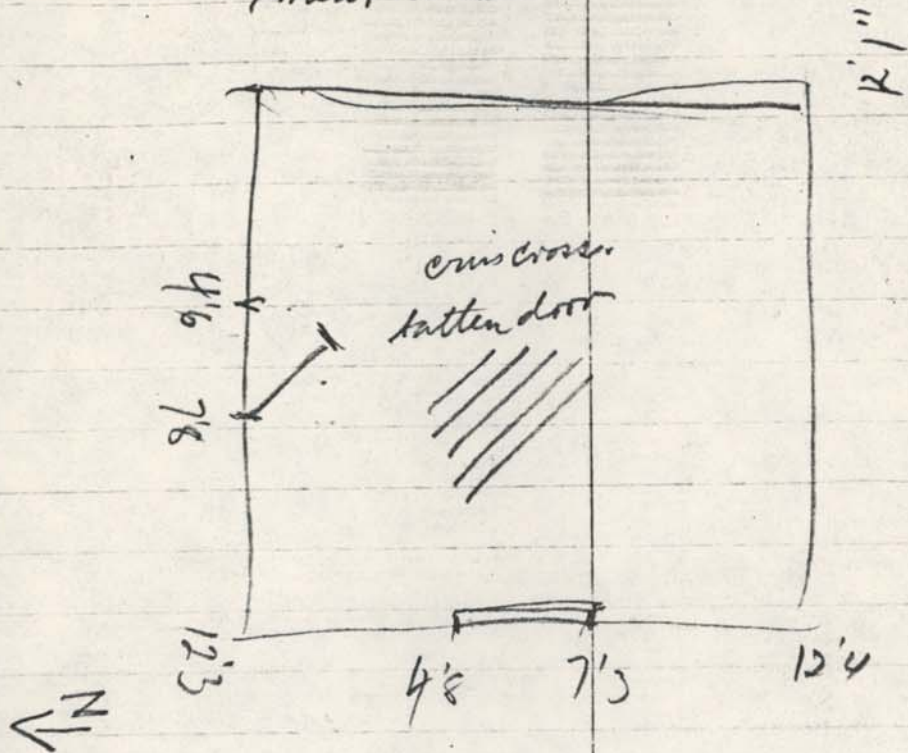


suspected Indian
mound. in

Rock from front
porch taken
from demol K.

MT.
ATLAS

out bldg. ks of heavy timber constr.
with mort + tenon joints & corner braces
meat house



siding 5" lag.

sits on stone pillars. one has a
stone front. w/ dirt floor

Mrs. P.'s father put the present roof.
~~also~~ built the front porch, demol. the
place kitchen, built the carriage house,