

History.

Park Gate was built on the Brent quarter of the Brent Town Tract, possibly as early as 1750. Some writers say that the home was a tenant house on the original 795-acre estate, while others believe it to have been the plantation's seat. In 1789, Daniel Carroll Brent, who had inherited the property from his father, William, sold the estate to Thomas Lee. Lee, the eldest son of Richard Henry Lee, the signer of the Declaration of Independence, was a lawyer by trade. In 1793, Thomas Lee moved from Dumfries to Park Gate with his wife, the former Mildred Washington, a niece of George Washington. Thomas Lee ~~was~~ died in 1805, leaving Park Gate to his second wife, Eliza Ashton Brent. Mildred Washington Lee is buried in a cemetery at Park Gate.

The present owners purchased the house with 40 acres in 1976 from Revell R. Liskey.

published sources, cont.

Gail Niedernhofer, "Rats vs. Restoration
in Virginia," The Old-House Journal, Oct 1977.

Marilyn Muse, "Park Gate: Out of Obscurity,"
Potomac News, 21 Sep 1976.

Eleanor Lee Templeman and Nan Netherton,
Northern Virginia Heritage (©1966), p. 186.

HABS, Virginia Catalog (c1976), p. 184.

Park Gate.

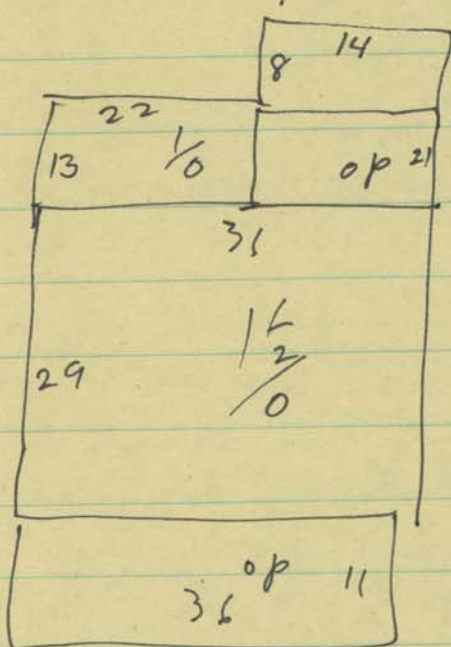
10508 Park Gate Dr.
 Ashesville Va. 22123

41.36964 AC,
 67-1-9D

in 1976 DB836 p.495. 78,000.

from Revell R. Liskey
 BP Barn 1976 + int Repairs.

"1750" in 1976 listed as poor cond.
 using well on lot 9B.



8 rooms
 4 B.R.

2 FP. only 1 brook

repaired - termite damage
 repl. winter doors etc
 added storm doors + winter
 1978

Born 40x60.