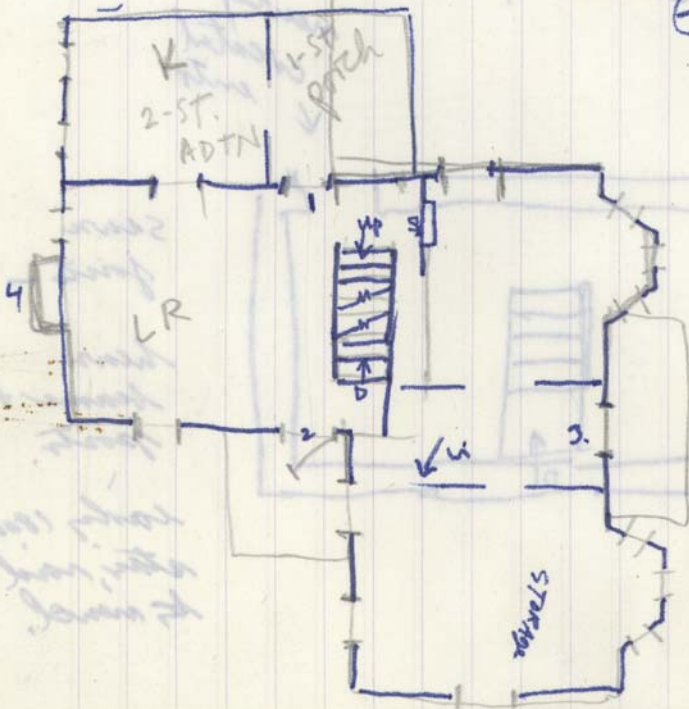


# G. PATTIE HOUSE

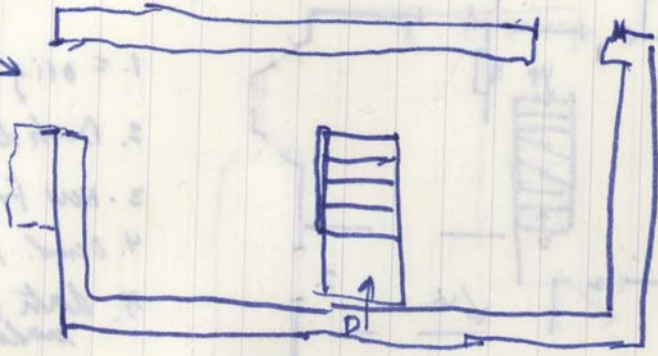


- 1. = orig front door
- 2. Back door
- 3. New Front
- 4. 2nd. F.P.
- 5. date scratched under S.C.?

cellar,

orig entry to  
basement

newly  
created  
entr

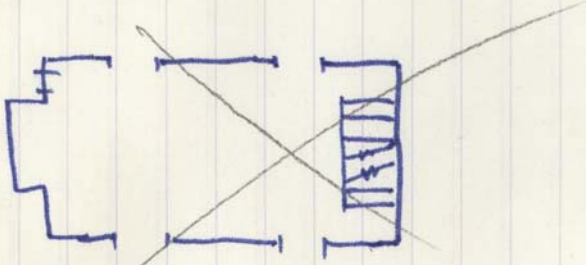


sawn  
joists -

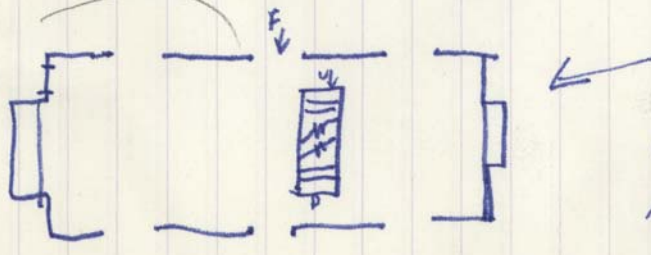
heavy  
beams +  
posts.

early 1800's  
stair, road +  
to manor.

Pattie



early house =  
2 bay  
side passage  
ST



shortened

cellar  
suggests  
this plan,  
only ~~wider~~ deeper