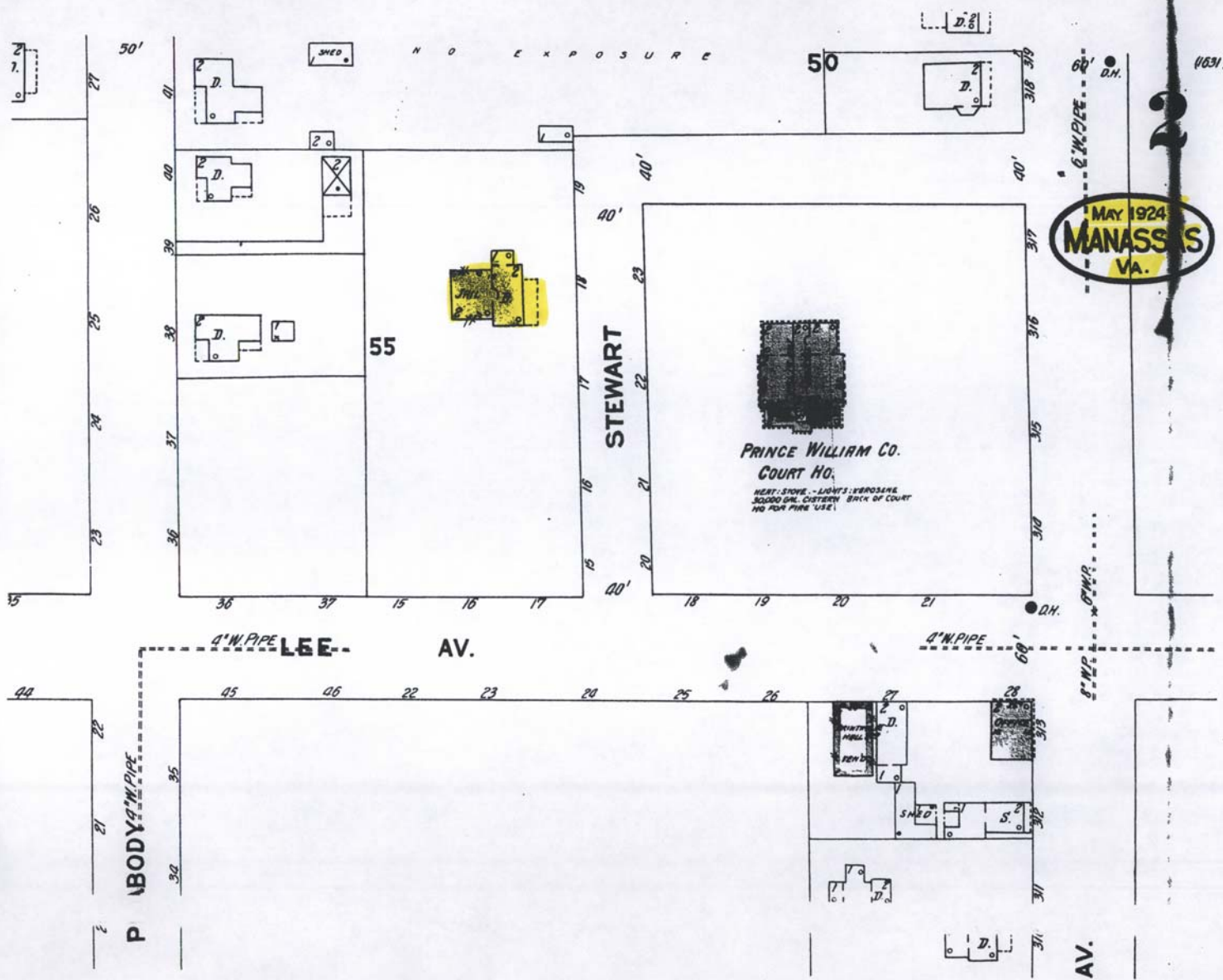


Sanborn Fire Insurance Maps



WA. FACILITIES:

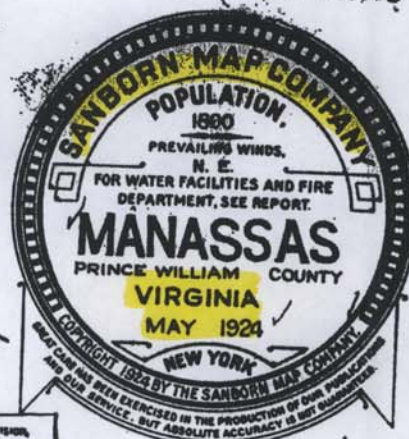
owned source wells. Water pumped from wells to Reservoir cap'cy. 40,000 Gal's. by 2 Ingersoll air compressors from Reservoir to H.T. elev'd. 75', cap'cy. 35,000 Gal's by Frederick pump. 11. per min. installed 1905. 55 Hpd's. Average daily consumption. 60,000 Gal's. 1.5 Miles "H. Pipe. Pressure: 55 lbs. No fire limits.

FIRE PT.:

Water Co. 35 men, chief is only paid man, receiving \$600 annually. No steam eng. 1 combination gasol eng. (40 H.P. gasol eng.), 1 H. & I. Truck. One 3 wheel hose cart with 150' 2" c.r.l. hose a 2" hose. Alarm sounded by pounding on piece of sheet iron at eng. ho. Brick Building. Streets practically level. About 1/2 Mile of paved streets others board walks. Town lighted by elec.

C.P.F. 434786

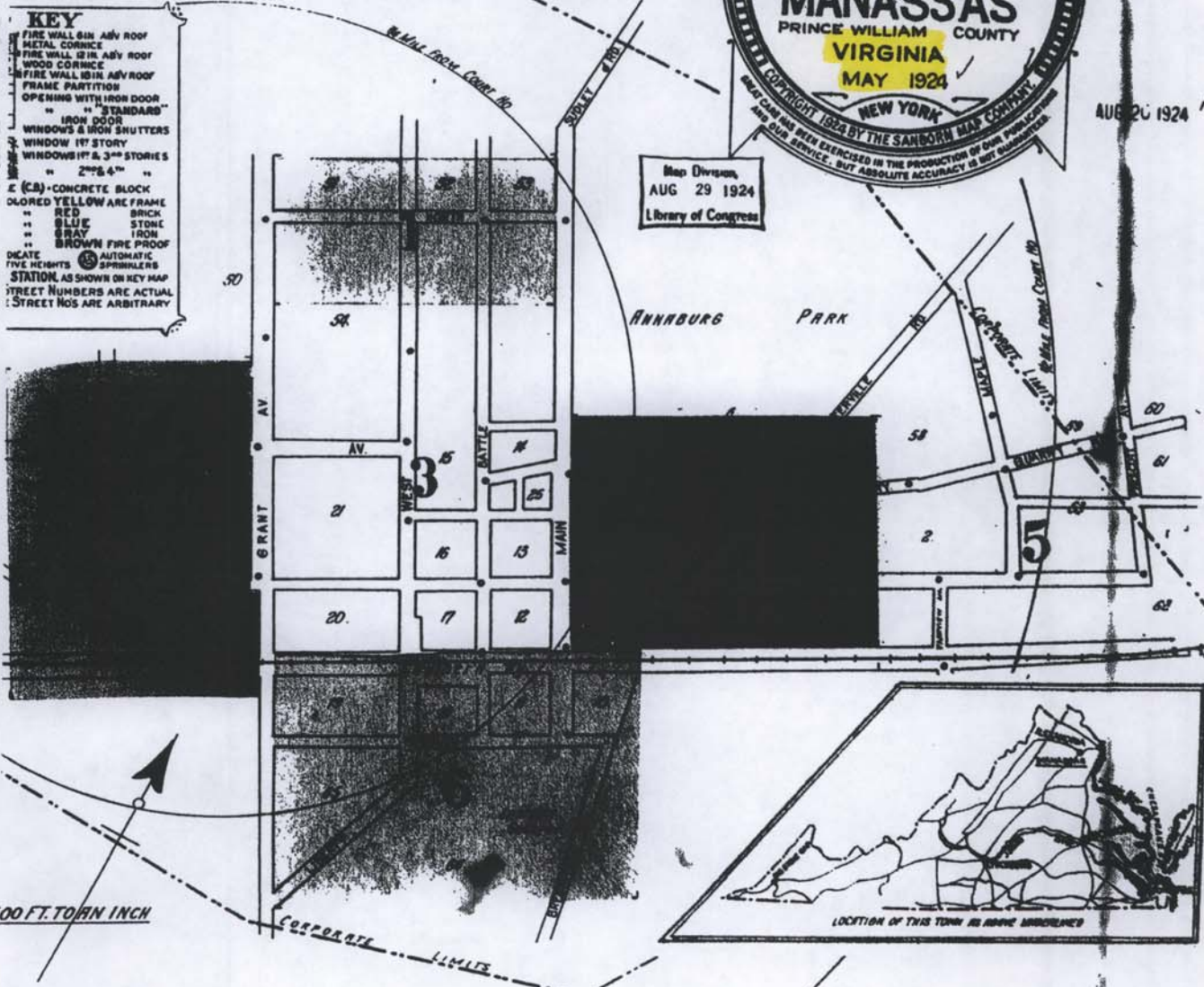
(1837)
(6 SHEETS)



AUG 20 1924

Map Division
AUG 29 1924
Library of Congress

- KEY**
- FIRE WALL 6 IN. ASB. ROOF
 - METAL CORNICE
 - FIRE WALL 12 IN. ASB. ROOF
 - WOOD CORNICE
 - FIRE WALL 18 IN. ASB. ROOF
 - FRAME PARTITION
 - OPENING WITH IRON DOOR
 - " " STANDARDS
 - " " IRON DOOR
 - WINDOWS & IRON SHUTTERS
 - WINDOW 17' STORY
 - WINDOWS 17' & 3" STORIES
 - " " 2" & 4" "
 - " " 2" & 4" "
 - (C.B.) CONCRETE BLOCK
 - COLORS YELLOW ARE FRAME
 - " " RED BRICK
 - " " BLUE STONE
 - " " GRAY IRON
 - " " BROWN FIRE PROOF
 - DICATE
 - FIVE HEIGHTS
 - AUTOMATIC SPRINKLERS
 - STATION, AS SHOWN ON KEY MAP
 - STREET NUMBERS ARE ACTUAL
 - STREET NOS ARE ARBITRARY



INDEX

STREETS		SHERTS		SHERTS		SHERTS			
Battle	B	Grant Ave.	G	Petasky Place (arbitrary)	S	Baptist Church, 30 West St.	S	Manassas High School	S
Brentsville Road	B	Lee Ave.	L	Prossett Ave.	S	(Colored)	S	Ice and Candy Manufactory	S
Center	C	Liberty	L	Quarry	Q	Hughes & Hoof Lumber Yard, etc.	S	Industrial School (Colored)	S
Centerville Road	C	Main	M	Road	R	School No. 2	S	Methodist Episcopal Church (South)	S
Charlevoix Place (arbitrary)	C	Maple	M	South	S	City Hall	C	New Prince William Hotel	S
East	E	North	N	Stewart	S	Conner, A. J., Saw and Planing Mill,	S	North Methodist Episcopal Church	S
Fairview	F	Peabody	P	West	W	County Court House and Jail	S	Presbyterian Church	S
				Zebaden	Z	Eastern College	E	Post Office	S
						Fire Department	F	Roman Catholic Church	S
						Larkin, Durrell & Co., Flour, Feed	L	S. R. R. Freight Depot	S
						and Produce	L	Standard Oil Co., Fuel, etc.	S
						Lutheran Church	L	State Agricultural School	S
						Manassas Electric Light and Power	M	Trinity Episcopal Church	S
						Co. and Pumping Station	M		
						Food and Milling Co.	M		

NOTE.—House Numbers given are arbitrary.

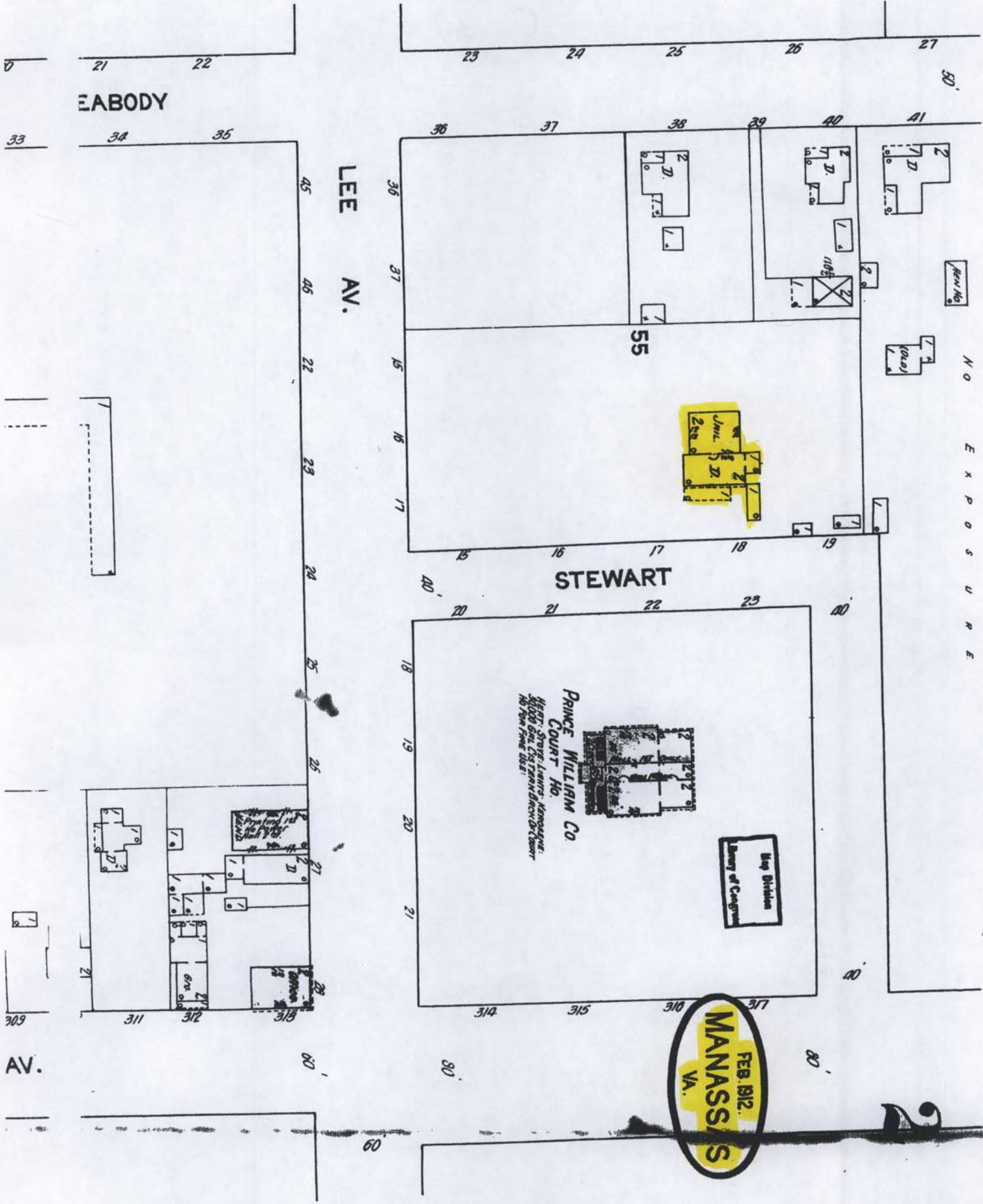
10 HOSPI
17 STEAM

42'

11/11/24

Saborn Fire Insurance maps

N O E X P O S U R E



FEB. 1912.
MANASSAS
 VA.