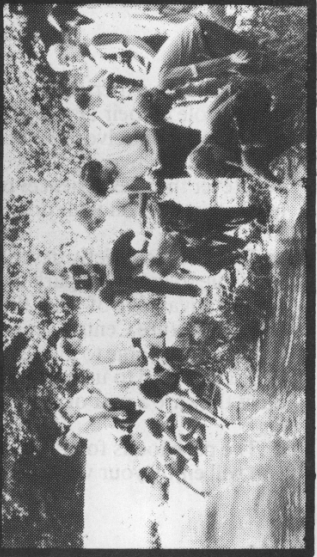
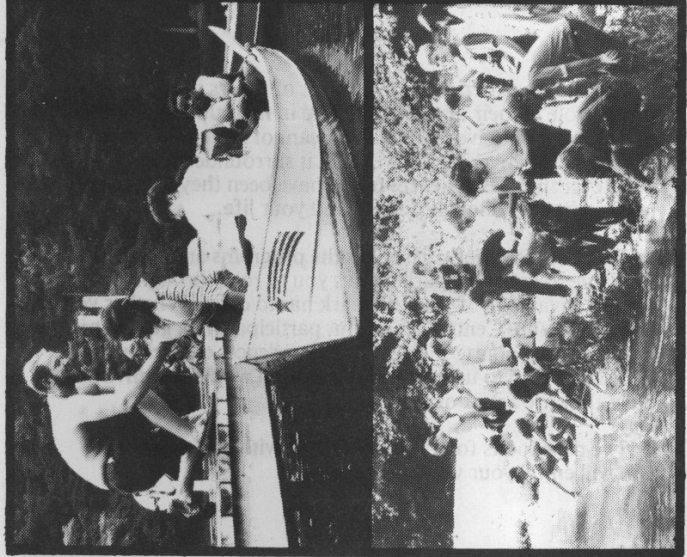


VIRGINIANA FILE MAR 16 1983

P.W.C. (Prince Wm. Forest)

Prince William Public Library

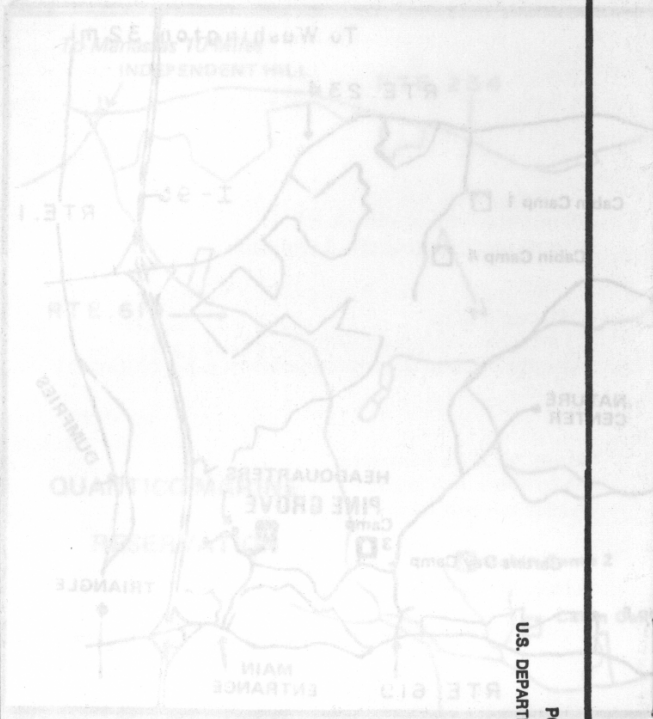


# Group Activities Prince William Forest Park



PRINCE WILLIAM FOREST PARK is administered by the National Park Service. As part of the Nation's principal conservation agency, we have a basic responsibility to protect and conserve our land and water, fish and wildlife, park and recreation areas, and for the wise use of all these resources.

Please observe regulations and remember, safety is no accident.



POSTAGE AND FEES PAID  
U.S. DEPARTMENT OF THE INTERIOR  
INT-417



## Programs Programs Programs

As part of the National Park system, Prince William Forest Park must, as its primary responsibility, support the enabling legislation of the National Park Service which states that all parks are to "...conserve the scenery and the natural and historic objects therein and provide for the enjoyment of the same in such manner and by such means as will leave them unimpaired for the enjoyment future generations".

The programs in this booklet have been designed to address this primary mission. Fostering an understanding of the natural and historic scene here in the park leads to the protection and to the wise use of the park and ensures that generations yet to come will be able to enjoy the park and its resources as much as we do today.

To arrange a program, the Nature Center generally requires a minimum of two weeks notice. During the busy spring and fall months an earlier notice may be necessary. Please feel free to call if you have any questions about the programs. Remember to have your group dressed and equipped in a manner appropriate for the weather and activity. **phone: (703) 221-2104**

## Introduction

Children's experiences in the out of doors play a fundamental role in their development and in their understanding of life and themselves. What adult cannot remember those days spent discovering the world that surrounded them? Whatever those experiences might have been they will always have an impact on your dreams and your life.

This booklet briefly describes the programs and facilities available to you. The park invites you to read through it and to take advantage of what the park has to offer. Whether you visit the Nature Center, see a film, participate in a guided program, or just come to picnic; these experiences can help people to discover and to understand the natural world and environment they are a part of.

The park looks forward to working with you and hopes you will enjoy your visit.

### Life on a Dead Tree

Preschool - 2nd grade

This program is based on the film "Life on a Dead Tree" in which two boys explore a rotting tree and find many kinds of living things on and in it. After the film, a park ranger will guide the children on a walk into the forest so that they can make their own discoveries.

### How Animals Move

Preschool - 2nd grade

The program is based on the film "Animals Move in Different Ways" in which several different animals and their methods of locomotion are presented. After the film a park ranger will bring out different animals and discuss how they move.

### Nature Center Visit

All ages

If you do not wish to have a guided program or if time is not available, you may wish to schedule a visit to the Nature Center to see the exhibits and perhaps view one of the films listed in this booklet. The Nature Center is handicap accessible and has handicap facilities.

### Fires, Forests, and Man

4th grade - Adults

The forest is a complex environment with the forces of both man and nature at work. This program takes a look at fire and other factors such as insects and the role they play in the forest. We will also discuss the value of a forest to both man and animal. The film "Friendly Flame" or "Forest of Trees and Logs" will be shown dependent upon the teacher or leaders interest in stressing fire ecology or general forest ecology.

### Pond Life

3rd grade - Adult

An introduction to pond ecology through the study of the plants and animals living in the pond and an analysis of the water and surrounding environment. The relationship of the animals to their habitat will be discussed. The film "Freshwater Pond", "Pond Life", or "The Aging of Lakes" may be shown depending upon the group and the time available.

## Programs Programs Programs

### Stream Life

3rd grade - Adult

An introduction to stream ecology through the study of the plants and animals in the stream and an analysis of the water and surrounding environment. The relationship of the animals to their habitat will be discussed.

### Watershed

3rd grade - Adult

Prince William Forest Park was established to protect and preserve the watershed of Quantico Creek. The program takes a look at what a watershed is and the history of the Quantico Creek watershed. The film "Problems of Conservation: Soil" may be shown depending upon the group and time available.

### Wildlife Managers

3rd grade - Adult

Nature has always known how to manage her wildlife and man is learning too. This program takes a look at some of nature's wildlife managers such as beaver, deer, and turkey. We will also discuss how park rangers help manage wildlife. The film "Wildlife Conservation" or "At the Crossroads" may be shown depending upon the group and time available.

### The Three Bees

3rd grade - Adult

Highly beneficial but much feared, bees, wasps, and hornets play an important role in the forest. This program looks at the habits of these three "bees" - what they do and what we should do when around them. The film "Marvels of the Hive" or "Bees: Backyard Science" may be shown depending upon the group and time available.

### Getting Outdoors

3rd grade - Adult

How to hike, backpack, cross country ski, bicycle and recreate safely in Prince William Forest Park. Films on backpacking, cross country skiing, bicycling, and safety in nature are available with the programs.

### Map & Compass

4th grade - Adult

Instruction in the skill of finding your way through the forest using a topographic map and compass. Instruction is followed by a practical exercise.

### Stormy Weather

4th grade - Adult

The weather has a profound effect on all life. This program shows how weather is measured and the effects weather can have on the forest both in terms of the potential for fire and acid rain - what it is and what it is doing to the environment.

### A Forest Returns

3rd grade - Adult

When the park was established in the 1930's much of the land now contained in the park was farmland. A hike from the Nature Center to the Davis farm site features a discussion of the people who lived here before the park was established and the forest that has returned to the land by forest succession.

### Cabin Branch Pyrite Mine

5th grade - Adult

An exploration of the history, geology, and environmental impact of the Cabin Branch Pyrite Mine on the park. A minimum of two hours is required for the program and it includes a 2½ mile round-trip hike.

## Facilities Facilities Facilities

Listed below are the facilities and equipment available for your use at the park. Some of the facilities do require advanced reservations so be sure to call the appropriate telephone number listed in the descriptions of the facilities for information or making reservations if required.

### Recreation

**Picnicking** - If you wish to bring your class or group for a day in the park, Prince William offers picnic facilities on a first come first served basis. You may wish to inquire about Carter's Day Camp which is available to groups by reservation only. It has picnic facilities, a large covered pavilion, restrooms, and a play field. Call Park Headquarters at (703) 221-7181 for an application for reservations.

**Ball fields** - There are two ball fields available in the park on a first come first served basis.

**Trails** - Thirty five miles of hiking trails are available including four self-guiding nature trails. The Pine Grove Forest Trail is handicap accessible. Park fire roads are open for cross country skiing when there is snow.

### Camping

**Cabin camps** - During the spring and fall the park has cabin camps available for overnight use by schools or organized groups of 50 or more persons. Many schools use the camps to hold two or three day recreational/environmental education experiences for their students. For details about cabin camping call Park Headquarters at (703) 221-7181.

**Tent camping** - Tent camping is available to groups at Turkey Run Ridge Campground near the Nature Center. Sites and facilities are accessible to the handicapped. For information about reservations call Park Headquarters at (703) 221-7181.

### Auditorium facilities

**Outdoor** - An outdoor amphitheater at the Nature Center is available to groups on a first come first served basis. There is seating for approximately 80 people, firewood, fire ring, and electricity. Evening use is for campers only.

**Indoor** - The Nature Center auditorium is available during the day on a reservation basis. There is seating for 40, a blackboard, movie screen, and audiovisual equipment. The Nature Center is handicap accessible and has handicap facilities. For reservations call the Nature Center at (703) 221-2104.

### Equipment

The Nature Center has a variety of equipment available for loan which may be used for self conducted activities here in the park. Staff from the Nature Center are available to meet with you to demonstrate equipment and to help you plan your activities. There is a checkout, accountability, and return procedure which must be followed. Call the Nature Center at (703) 221-2104 for details.

compasses	hand lenses
orienteeing maps	soil auger
orienteeing markers	soil moisture meter
forestry hypsometers	soil thermometer
diameter tapes	soil trowels
measuring wheels	stream seine
tree sections	box strainer
sample "board foot"	secchi disk
insect sweeps	bottom dredge
test kits (various)	plankton net

## Films Films Films Films

Listed here are the films available for viewing at the Nature Center. Because of the expense of maintaining and replacing them, films are not available for loan. Films are shown upon request during the weekends and by appointment during the week. **phone: (703) 221-2104**

### **Marvels of the Hive**

22 minutes 1st grade - Adult  
Nature film discusses the life of the honey bee.

### **Bees: Backyard Science**

13 minutes 1st grade - Adult  
Describes the life cycle of honey bees, their habits, and how honey is collected by a beekeeper.

### **Soil: An Introduction**

8½ minutes 4th grade - Junior High  
Describes soil formation, soil nutrients, soil types, erosion, the role of plants and animals, and the importance of soil to man.

### **Insects That Help Us**

10½ minutes 1st grade - 6th grade  
Benefits to man, insects role in soils, and insects controlling other insects.

### **Life on a Dead Tree**

11 minutes Preschool - 3rd grade  
Two boys explore a rotting log and discover many creatures living there.

### **Animals Move In Many Ways**

11 minutes Preschool - 3rd grade  
A study of the various means of locomotion from insects to sea turtles.

### **The Pond: A First Film**

10½ minutes 1st grade - 6th grade  
Life in and around a pond through the seasons.

### **Rain: A First Film**

9 minutes 1st grade - 3rd grade  
A look at rain in simple terms.

### **Changing Forest**

10½ minutes 1st grade - 6th grade  
The forest ecosystem through the seasons.

### **What Do Plants Do? A First Film**

10½ minutes 1st grade - 6th grade  
Provide lumber, clothing, beauty, make food for living things, and (through time lapse photography) they move!

### **World of the Beaver**

28 minutes All ages  
Fascinating photography and account of the life of a beaver.

### **Animal Habitats**

11 minutes 4th grade - Junior High  
Animals and their adaptations to various environments.

### **Life On The Forest Floor**

9½ minutes 4th grade - Junior High  
Plant and animal ecology on the forest floor.

### **Balance In Nature**

8½ minutes 4th grade - Junior High  
The balance between all living and non-living things and how that balance can change.

### **Life In the Forest**

11 minutes 3rd grade - 6th grade  
General nature film about the forest environment.

### **The Community**

11 minutes 5th grade - Adult  
Descriptions of the levels in a food chain and the interrelation of living and non-living things in different habitats.

### **The Temperate Deciduous Forest**

16 minutes 5th grade - Adult  
Description of the interrelationships in an eastern hardwood forest through the seasons.

### **What is Ecology ?**

11 minutes 5th grade - Adult  
Defines predation, parasitism, mutualism, etc., and the relation between living and non-living things.

### **Problems of Conservation: Wildlife**

13 minutes 4th grade - Adult  
How wildlife is managed and some unexpected results from man's actions. The dependence of all living things on each other.

### **Problems of Conservation: Soil**

14 minutes 4th grade - Adult  
Soil types, how soils are formed, destruction of soil by erosion, and how soil can be conserved.

### **The Aging of Lakes**

14 minutes 5th grade - Adult  
The transition of a lake from lake, to marsh, to meadow, to forest, and how man's activities accelerate the process through pollution.

### **The Freshwater Pond**

13 minutes 4th - Junior High  
A study of the creatures of a pond.

### **Life In A Vacant Lot**

10 minutes 3rd grade - Adult  
The plants and the animals found in the ecosystem of an urban vacant lot

### **Life In the Woodlot**

20 minutes 3rd grade - Adult  
The interdependence of living things in a small woodlot and the benefits of a woodlot to the farmer.

**World In a Marsh**

22 minutes 4th grade - Adult

A look at all of the creatures that live in a freshwater marsh.

**Forest of Trees and Logs**

20 minutes 5th grade - Adult

Filmed in the Pacific Northwest, the film talks about forest conservation.

**Wild Babies**

27 minutes All ages

Entertaining and informative look at the lives of wild animal babies.

**At the Crossroads**

26 minutes All ages

The story of America's endangered species of animals.

**Instruments: Measuring the Weather**

12 minutes 5th grade - Junior High

Description of units of measurement, calibration, and the instruments used to measure the weather.

**Friendly Flame**

28 minutes 6th grade - Adult

How forest fires can be both beneficial and destructive and the use of fire for forest management.

**For Your Pleasure**

5 minutes All ages

Cartoon portrayal of the destruction of a pastoral scene by urbanization.

**Anytime - Anyplace**

15 minutes All ages

Film for developing environmental awareness.

**Bicycle Safety**

12 minutes All ages

How to ride your bicycle safely.

**Backpacking**

15 minutes All ages

Preparing for a backpack trip.

**Cross Country Skiing**

15 minutes All ages

The basics of cross country ski touring including equipment waxing, and technique.

**Safe In Nature**

20 minutes 3rd grade - Junior High

What to do if lost in a forest or desert environment and how to avoid getting lost.

**Age of Alaska**

28 minutes All ages

The new parklands of Alaska.

**Nature's Last Frontier**

30 minutes All ages

Scenes from our National Parks.

**This Land**

16 minutes All ages

The National Park Service

**Human Crop**

9 minutes 4th grade - Adult

The story of Prince William Forest Park, why it was developed in 1936.

**Opposites in Harmony**

15 minutes 4th grade - Adult

The founding fathers struggle to unify the states under the Constitution in the years after the Revolution and to determine what the Constitution means.

**Early Americans**

25 minutes 4th grade - Adult

Culture of the native Americans in 1776.

**Independence Visitor Center**

25 minutes 4th grade - Adult

The founding fathers retell the story of our Nation's beginnings.

**American 1776**

25 minutes 4th grade - Adult

A father and his son share differing views of the American Revolution.

**To Keep Our Liberty**

20 minutes 4th grade - Adult

Events leading up to the Revolution.

**Officer's Life**

15 minutes 4th grade - Adult

An enlisted man describes the life of a Revolutionary War officer.

**Siege of Fort Stanwix**

15 minutes 4th grade - Adult

A reenactment of the siege.

**Kings Mountain**

15 minutes 4th grade - Adult

Telling of the story of the battle of Kings Mountain.

**Victory at Yorktown**

15 minutes 4th grade - Adult

Reenactment of the British surrender at Yorktown.

**Morristown Encampment**

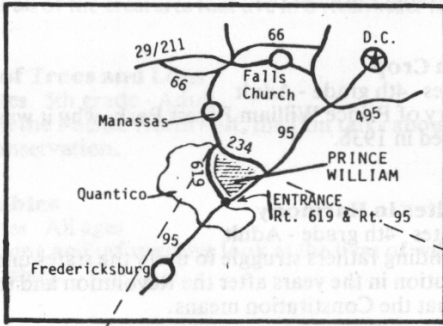
15 minutes 4th grade - Adult

Reenactment of the hardship suffered by the soldiers during the winter of 1779 - 1780.

**Washington's Birthplace**

15 minutes 4th grade - Adult

Film about Pope's Creek, Washington's boyhood home.



NATIONAL PARK SERVICE  
PRINCE WILLIAM FOREST PARK  
P. O. BOX 208  
TRIANGLE, VIRGINIA 22172

