

PRINCE WILLIAM COUNTY

Arts and Agriculture Overlay District

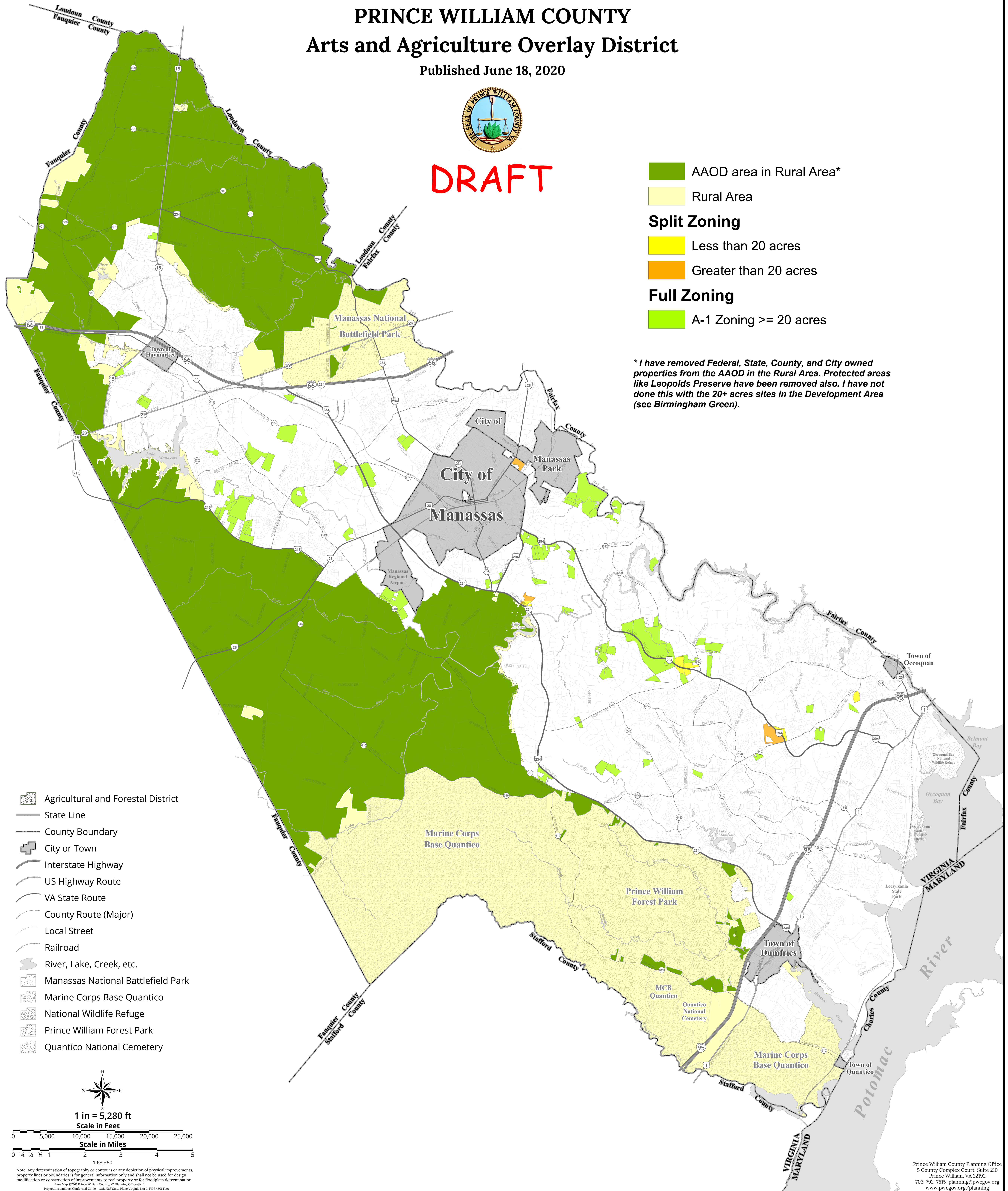
Published June 18, 2020



DRAFT

- AAOD area in Rural Area*
- Rural Area
- Split Zoning**
 - Less than 20 acres
 - Greater than 20 acres
- Full Zoning**
 - A-1 Zoning \geq 20 acres

** I have removed Federal, State, County, and City owned properties from the AAOD in the Rural Area. Protected areas like Leopolds Preserve have been removed also. I have not done this with the 20+ acres sites in the Development Area (see Birmingham Green).*



Note: Any determination of topography or contours or any depiction of physical improvements, property lines or boundaries is for general information only and shall not be used for design, modification or construction of improvements to real property or for floodplain determination.
Base Map ©2017 Prince William County, VA Planning Office (dms)
Projection: Lambert Conformal Conic; NAD83; State Plane Virginia North FIPS 4001 Feet

Prince William County Planning Office
5 County Complex Court, Suite 210
Prince William, VA 22192
703-792-7615 planning@pwgov.org
www.pwgov.org/planning