

PRINCE WILLIAM

Transportation

Walkability Assessment Checklist – Sudley Road

ADDRESS: 7809 Sudley Road, Manassas, VA 20109

DIRECTION: NB

SURVEYOR and DATE OF SURVEY: Evandro Santos, 01/17/2025



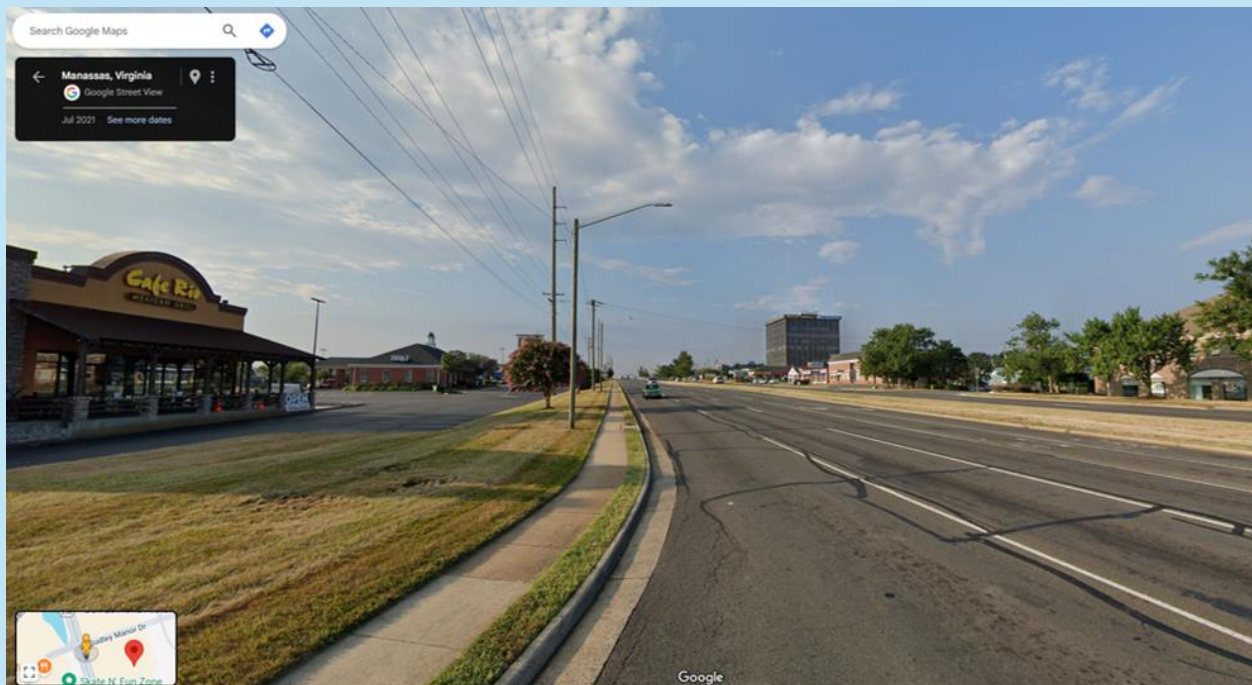
SIDEWALKS

1. Is the sidewalk wide enough for wheelchairs or people walking in opposite directions?

() YES

(X) NO

OBS: Although 4-foot sidewalks were considered the minimum width, it's an old standard (currently 5 feet is the minimum) and due to the lack of protective buffer related to traffic and due to the heavy and fast traffic (45-mph posted speed limit), the sidewalk width is considered insufficient.

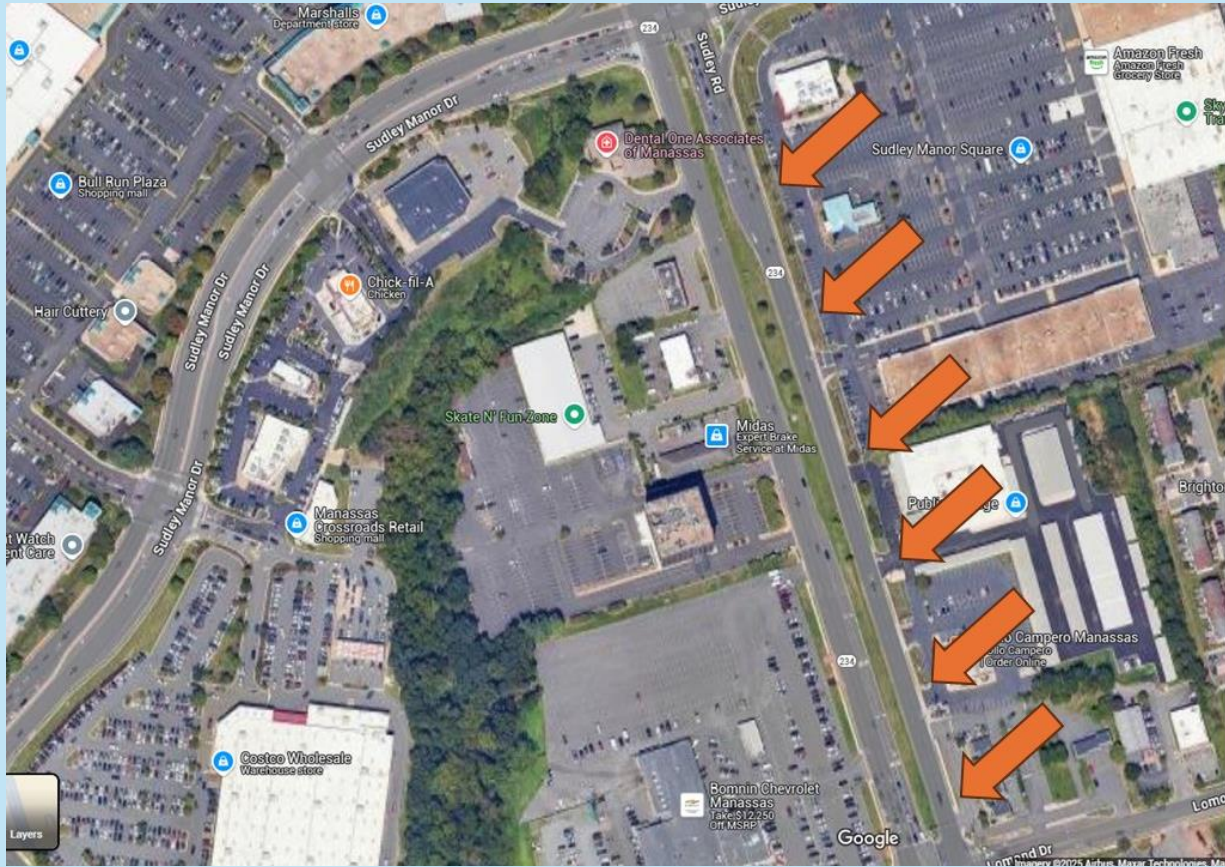


2. Is the sidewalk or pathway continuous?

(X) YES

() NO

OBS: Despite being an old sidewalk, it is continuous along the segment.



3. Are sidewalks clear of weeds, yard debris, signs, poles, and cars?

YES

NO

OBS: Despite the minimal width, the path is clear. Although, no trash cans were found along the sidewalk.



4. Is there enough space between traffic and the sidewalk?

() YES

(X) NO

OBS: 2 feet buffer is not enough, despite the curb. Safety, pollution emissions, and noise compromise the walkability conditions.

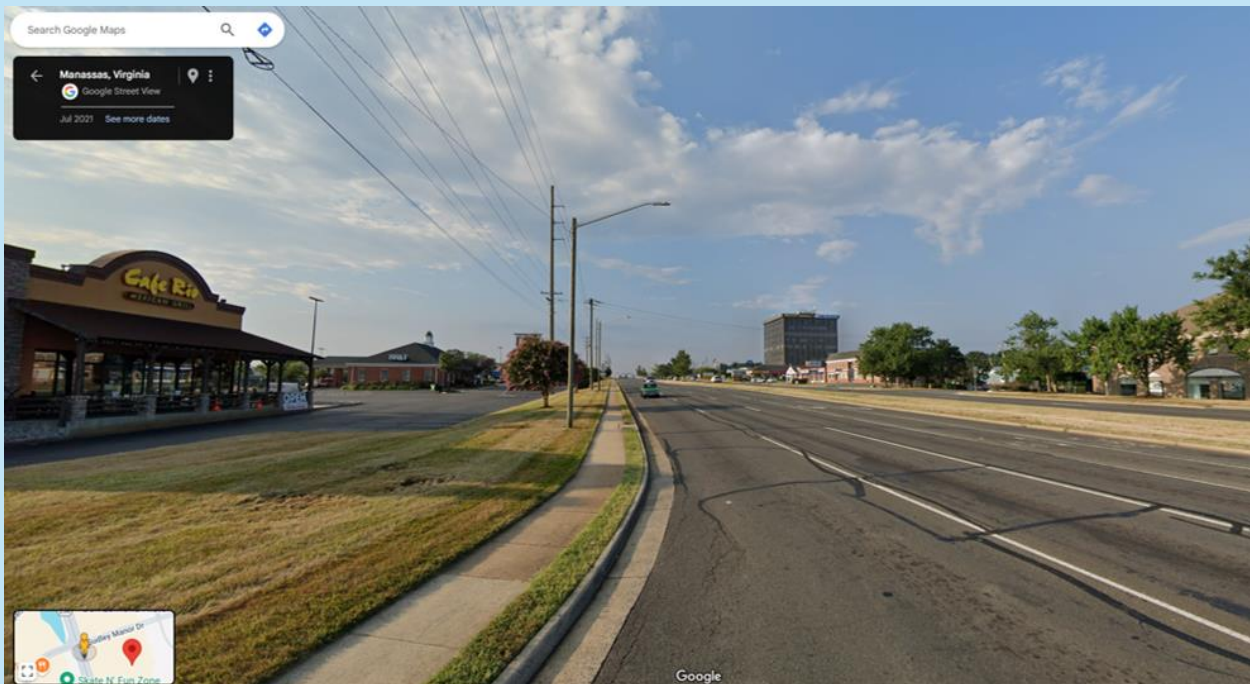


5. Is there on-street parking or buffer strip to buffer pedestrians from traffic?

() YES

(X) NO

OBS: 2 feet buffer is not enough, despite the curb and gutter.



6. Are the sidewalks in good condition, without any large cracks or dips?

() YES

(X) NO

OBS: Some cracks and unlevelled stretches are present.



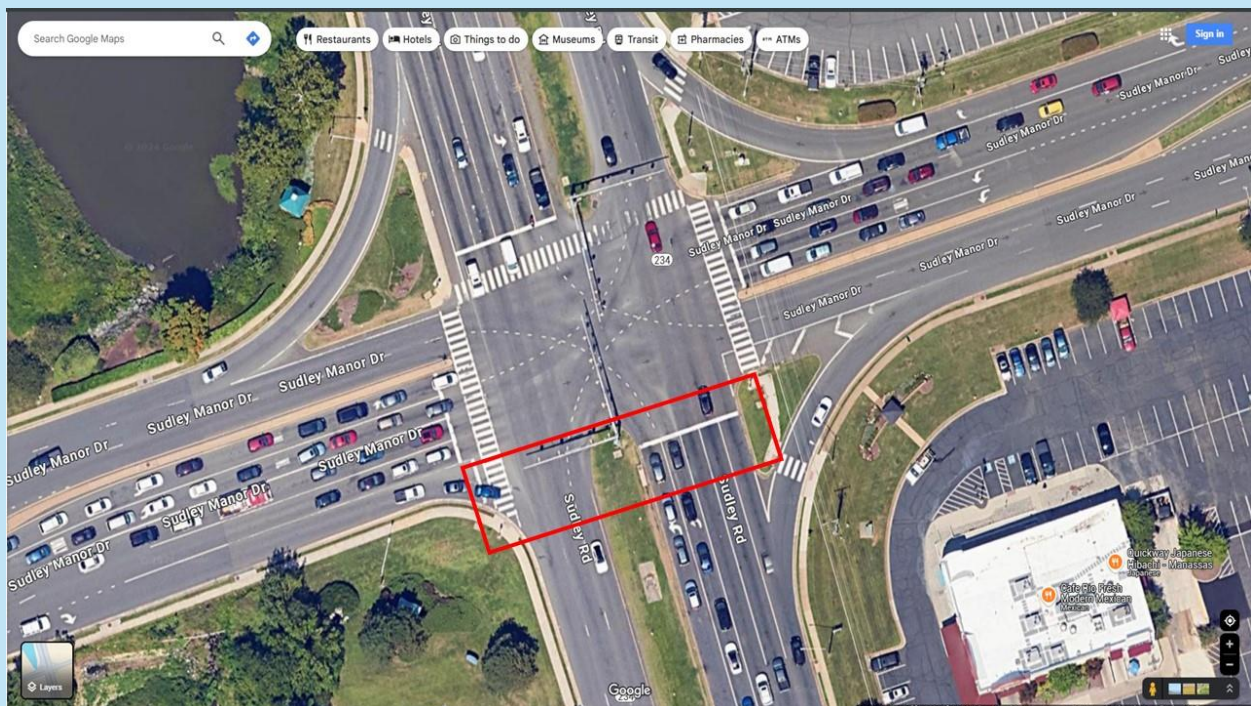
CROSSWALKS

7. Are there clearly marked crosswalks?

() YES

(X) NO

OBS: Missing crosswalk in one section of the intersection.



8. Is there a crossing signal?

(X) YES

() NO



9. Did the signal give you enough time to cross the street?

YES

NO

OBS: VDOT calibrates the signal timing based on the Manual of Uniform Traffic Control Devices (MUTCD) and/or AASHTO which specifies use of a walking speed of 3.5 feet/ second to calculate pedestrian crossing time. Different timings might have set for different traffic conditions and time of the day.

10. Can you see oncoming traffic while standing on the sidewalk before you cross the street?

(X) YES

() NO

OBS: The intersection is unobstructed.



TRAFFIC

11. Do drivers respect pedestrians?

() YES

(X) NO

OBS: As a heavy traffic and high-speed road (45 mph posted speed), drivers focus on traffic flow and several pedestrians take chance of crossing the road outside of the crosswalks.

12. Are cars following the speed limits?

() YES

(X) NO

OBS: When traffic conditions permit, many drivers go over the 45-mph posted speed limit.

OVERALL SUROUNDINGS

13. Did you feel safe?

() YES

(X) NO

OBS: During winter, this sidewalk becomes dangerous and challenging for pedestrians.



Foto: Kevin Wyrach, 2025

14. Is there adequate street lighting?

() YES

(X) NO

OBS: It's dangerous to walk at night on this sidewalk.



15. Are the streets and sidewalks free of litter and trash?

() YES

(X) NO

OBS: Trash is found everywhere.



16. Are there street trees that provide shade?

() YES

(X) NO

OBS: Lack of urban character and comfort for a pleasant walk.

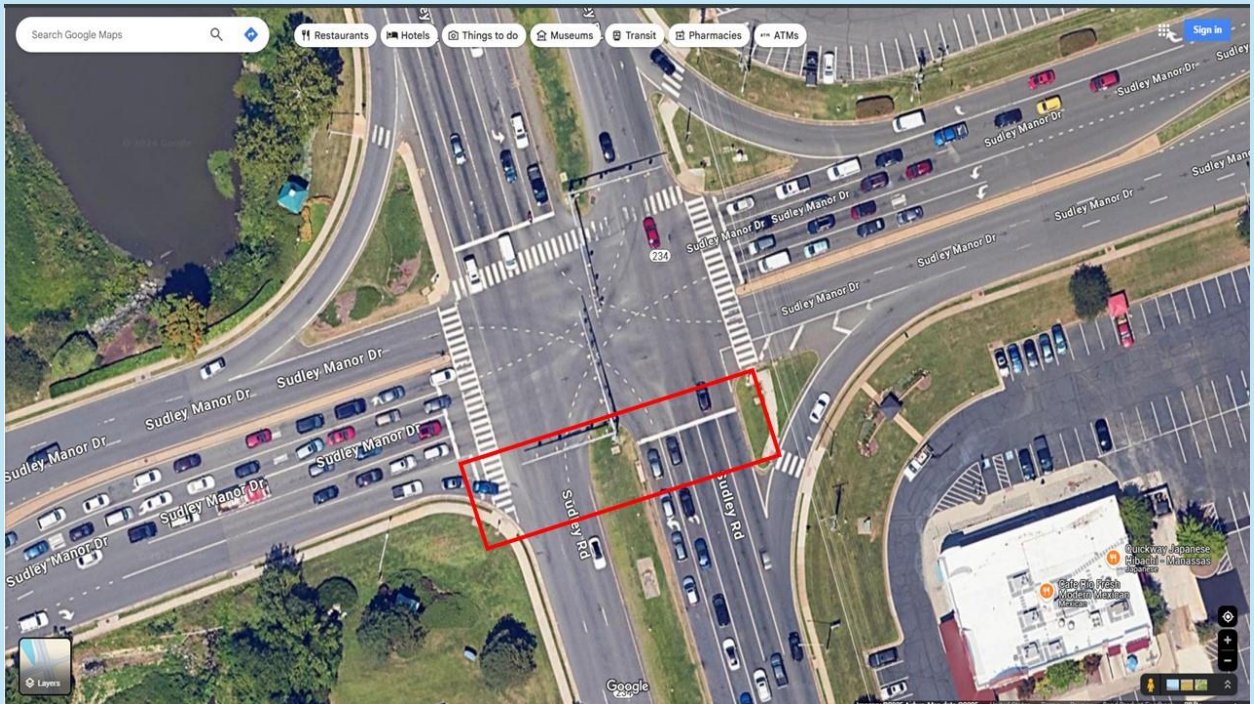


A.D.A. COMPLIANCE

17. Are there ramps connecting sidewalks and crosswalks on both sides?

() YES

(X) NO



18. Are ramps in good shape, leveled, and following current standards?
(PROWAG, 2024*)

() YES

(X) NO



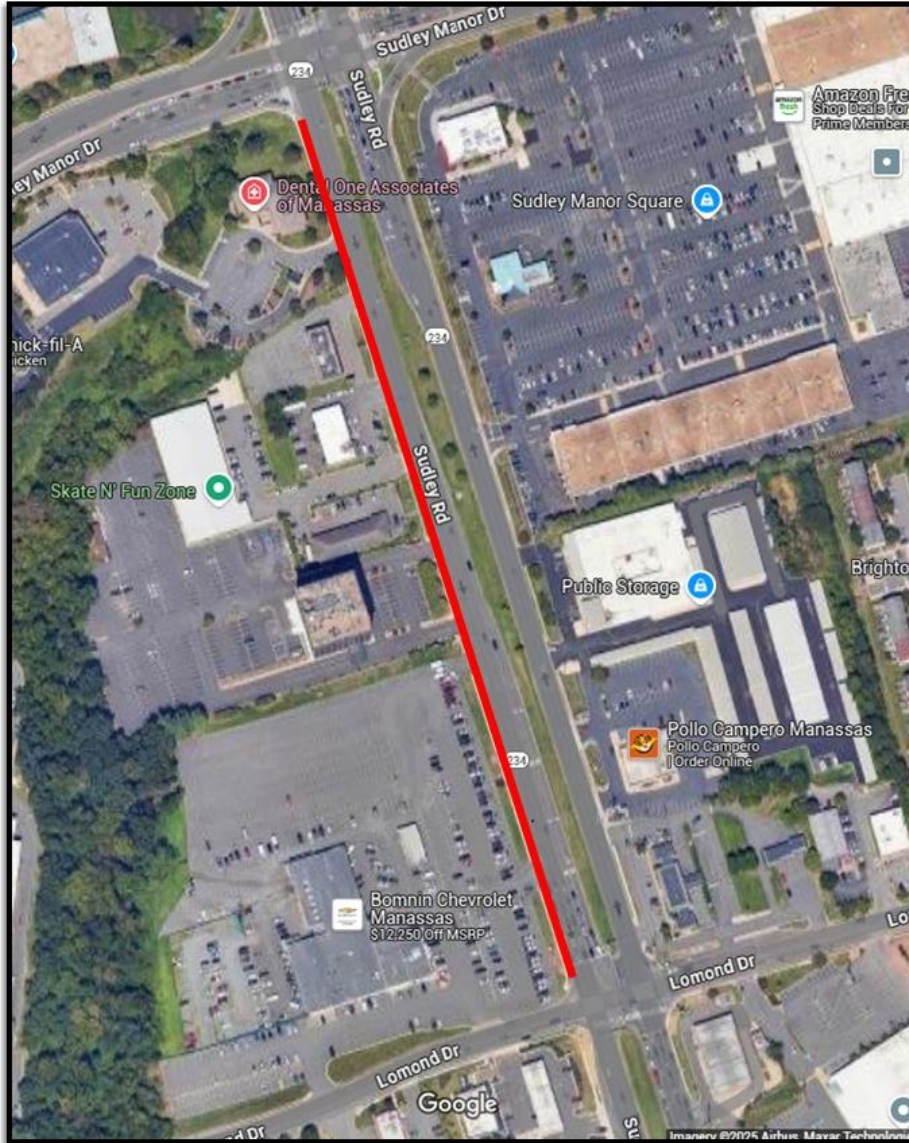
SCORE: 5.0

*<https://www.access-board.gov/prowag/>

ADDRESS: 7809 Sudley Road, Manassas, VA 20109

DIRECTION: SB

SURVEYOR and DATE OF SURVEY: Evandro Santos, 01/17/2025



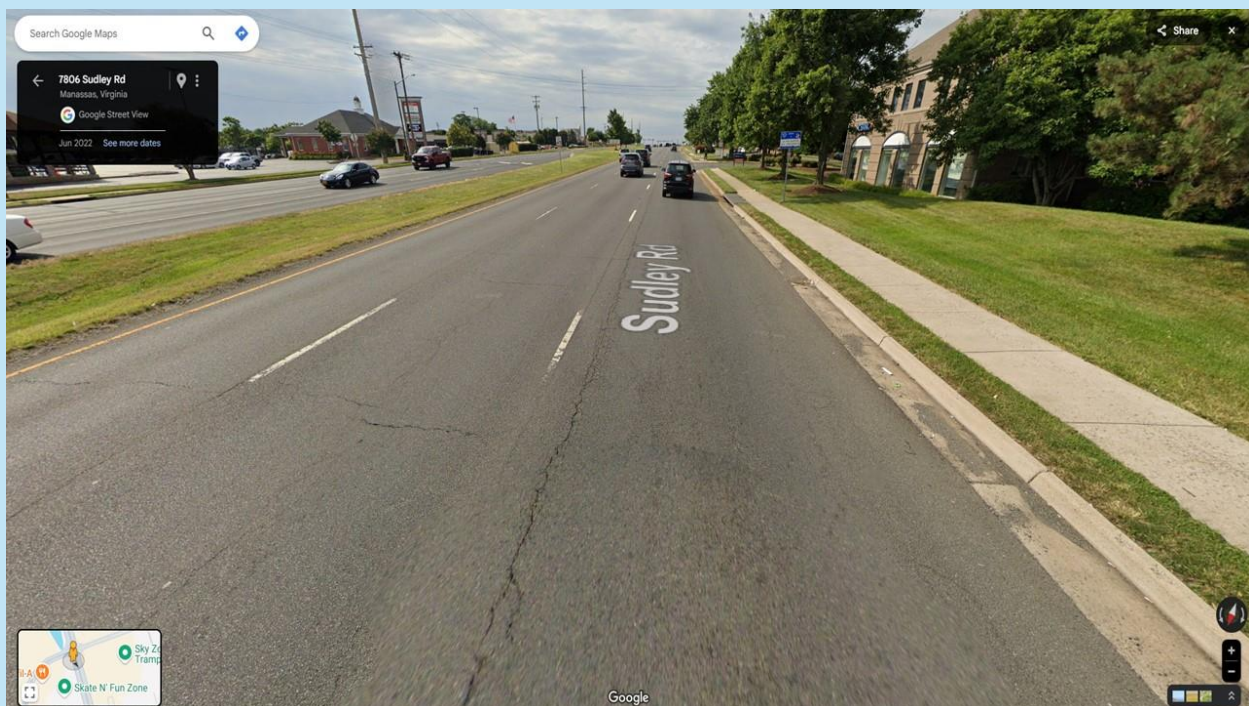
SIDEWALKS

1. Is the sidewalk wide enough for wheelchairs or people walking in opposite directions?

() YES

(X) NO

OBS: Although 4 feet sidewalks were considered the minimum width, it's an old standard (currently 5 feet is the minimum) and due to the lack of protective buffer related to traffic and due to heavy and fast traffic (45 mph posted speed limit) the sidewalk width is considered insufficient.



2. Is the sidewalk or pathway continuous?

YES

NO

OBS; No interruptions on the path.



3. Are sidewalks clear of weeds, yard debris, signs, poles, and cars?

(X) YES

() NO

OBS: Although, no trash cans were found along the sidewalk.



4. Is there enough space between traffic and the sidewalk?

() YES

(X) NO

OBS: 2 feet buffer is not enough, despite the curb. Safety, pollution emissions, and noise compromise the walkability conditions.

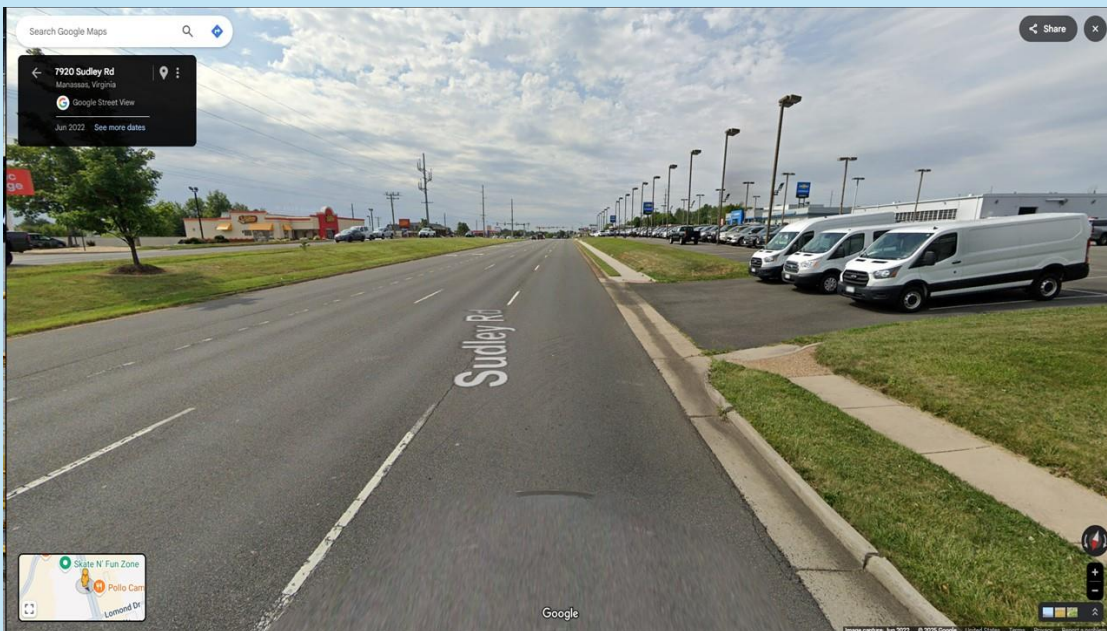


5. Is there on-street parking or buffer strip to buffer pedestrians from traffic?

() YES

(X) NO

OBS: 2 feet grass strip is not enough to buffer pedestrians from traffic, despite the curb. Commercial building entrances should be marked to warn drivers about pedestrians.

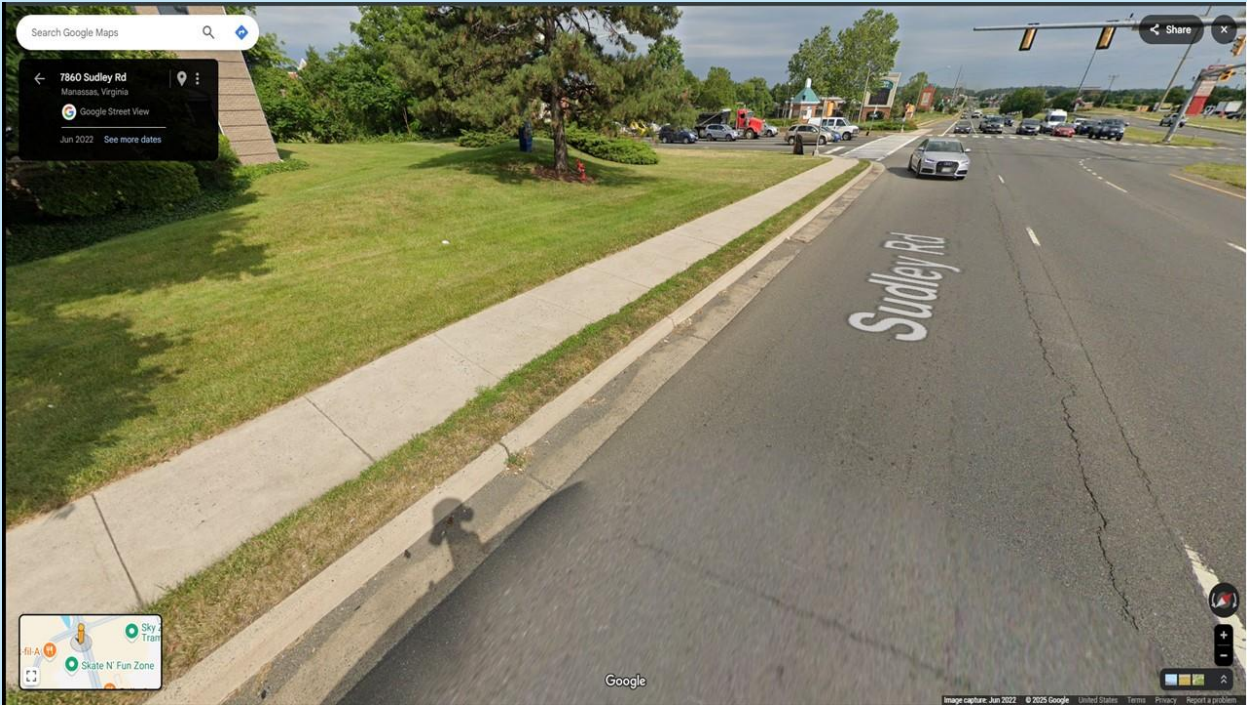


6. Are the sidewalks in good condition, without any large cracks or dips?

(X) YES

() NO

OBS: This side of the road's sidewalk is better maintained than the other side.



CROSSWALKS

7. Are there clearly marked crosswalks?

() YES

(X) NO

OBS: Missing crosswalks at intersections on both edges of the segment.



8. Is there a crossing signal?

YES

NO

OBS: Although the cross signal is present, there is a missing link for crosswalks to complete.

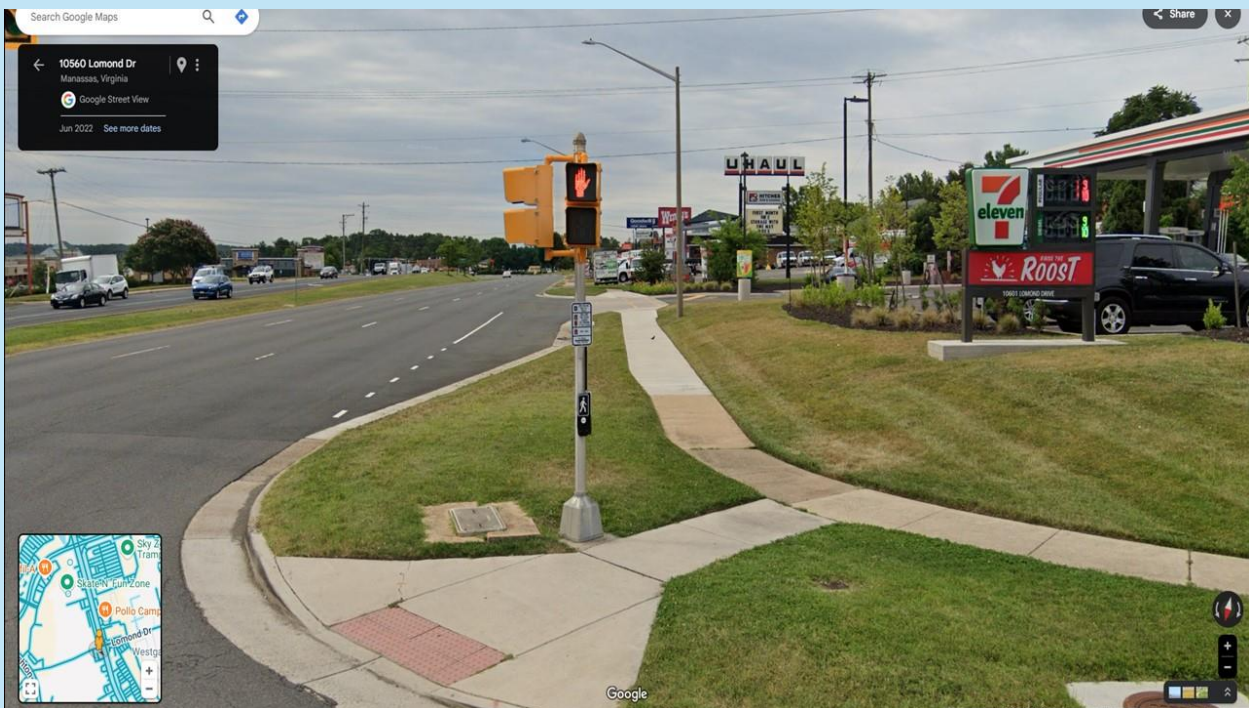


9. Did the signal give you enough time to cross the street?

YES

NO

OBS: VDOT calibrates the signal timing based on the Manual of Uniform Traffic Control Devices (MUTCD) and/or AASHTO which specifies use of a walking speed of 3.5 feet/second to calculate pedestrian crossing time.



10. Can you see oncoming traffic while standing on the sidewalk before you cross the street?

(X) YES

() NO

OBS: Unobstructed intersection.



TRAFFIC

11. Do drivers respect pedestrians?

() YES

(X) NO

OBS: As a heavy traffic and high-speed road, drivers focus on traffic flow and several pedestrians take chance of crossing the road outside of the crosswalks.

12. Are cars following the speed limits?

YES

NO

OBS: When traffic conditions permit, many drivers go over the 45-mph posted speed limit.

OVERALL SUROUNDINGS

13. Did you feel safe?

() YES

(X) NO

OBS: Sudley Road looks like a highway serving a commercial zone within a populated area, not pedestrian-friendly at all. During winter and snowy days this sidewalk becomes dangerous and challenging for pedestrians.



14. Is there adequate street lighting?

() YES

(X) NO

OBS: It's dangerous to walk at night on this sidewalk.



15. Are the streets and sidewalks free of litter and trash?

() YES

(X) NO

OBS: Trash is found everywhere.

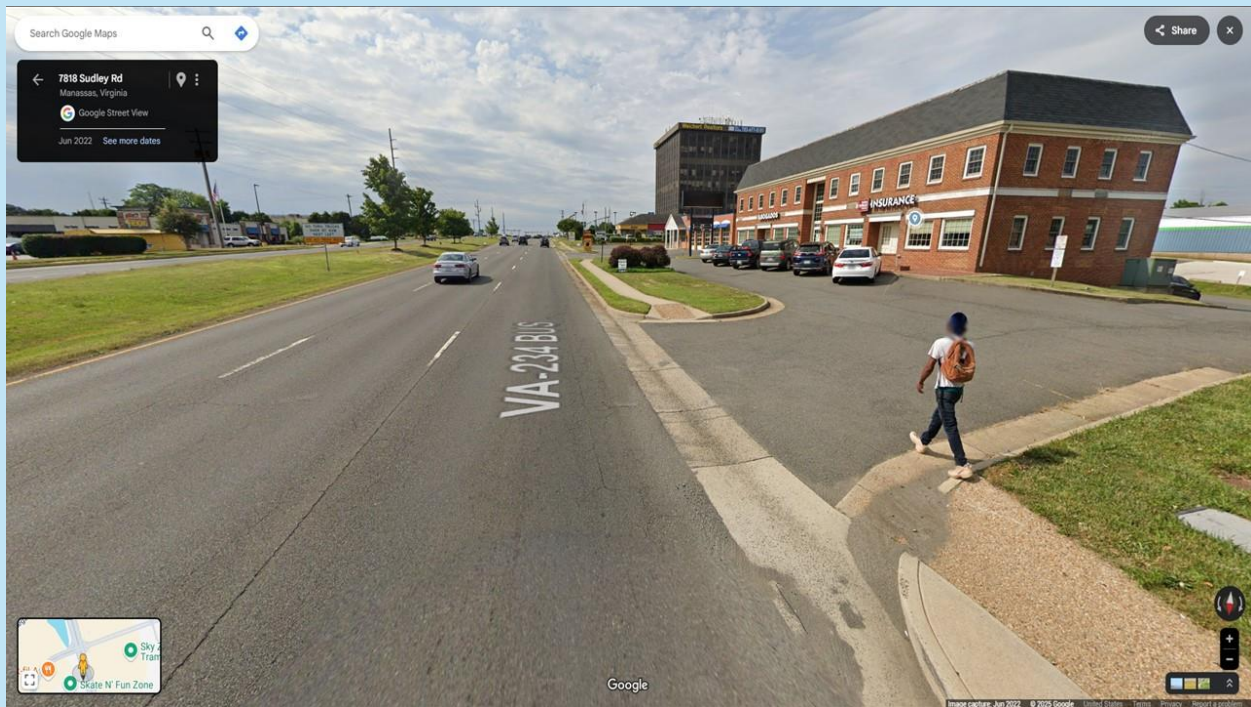


16. Are there street trees that provide shade?

() YES

(X) NO

OBS: Lack of urban character and comfort for a pleasant walk.



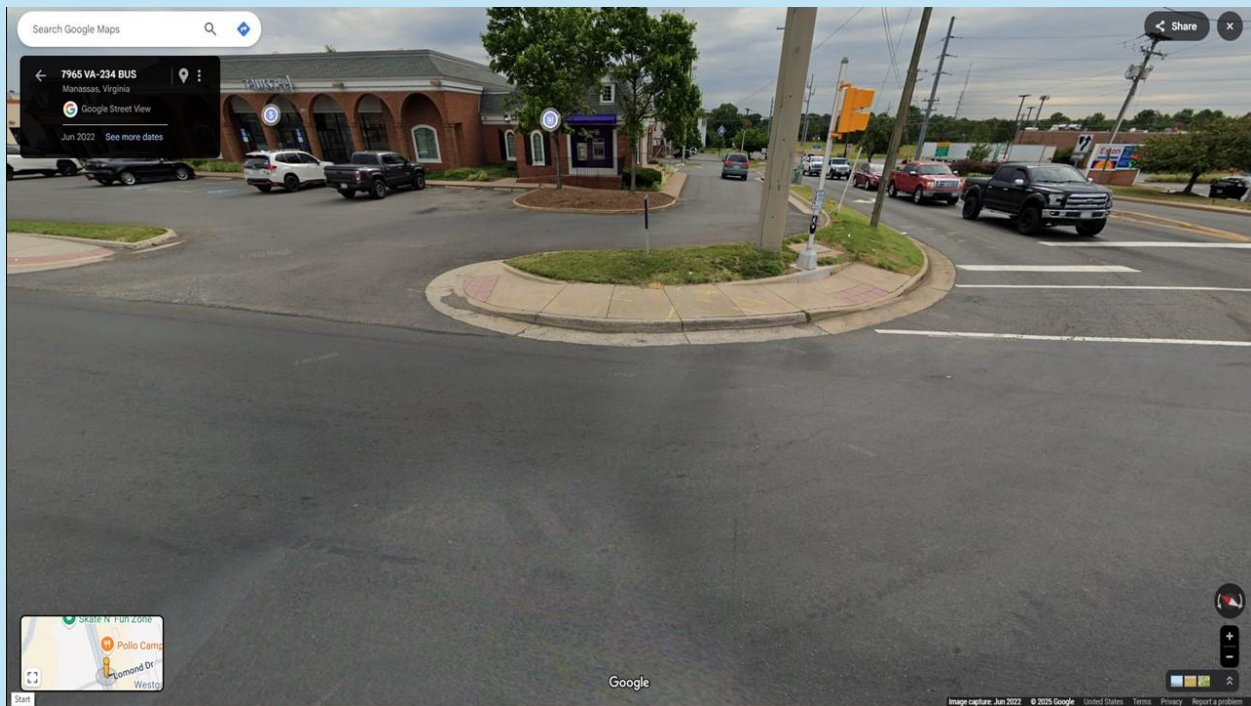
A.D.A. COMPLIANCE

17. Are there ramps connecting sidewalks and crosswalks on both sides?

YES

NO

OBS: Ramps are positioned in different directions not necessarily facing the crosswalk path, when available.

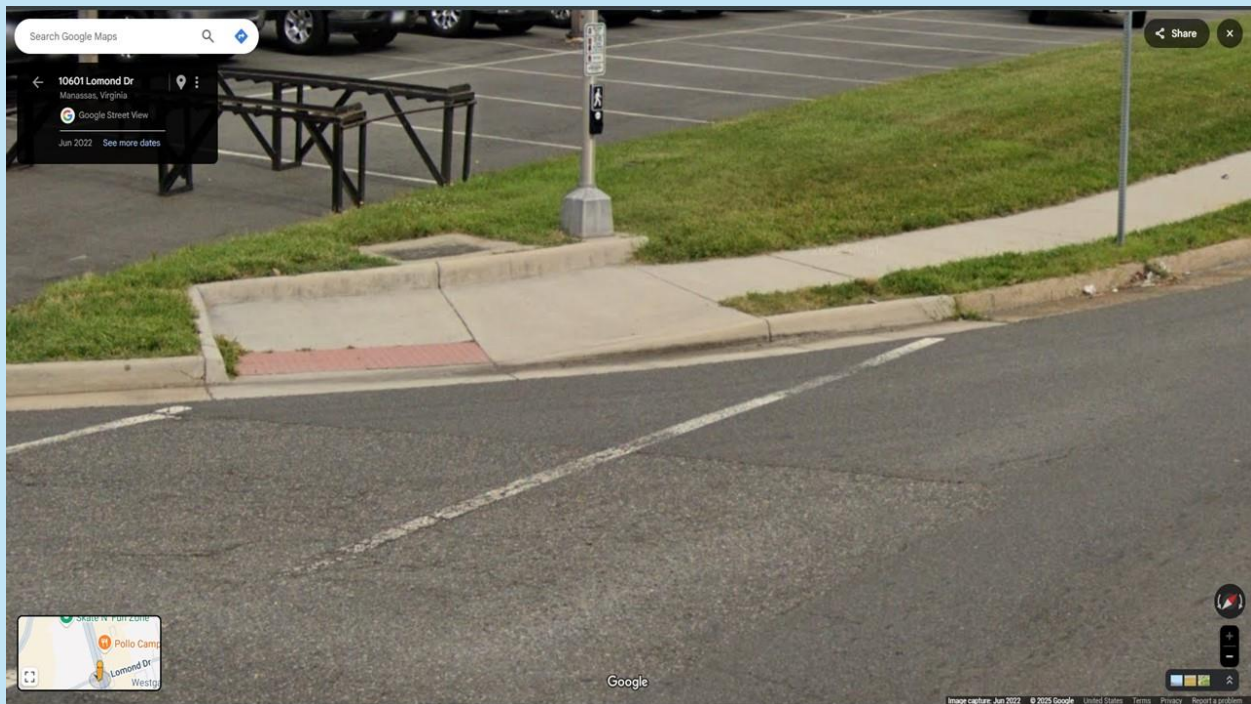


18. Are ramps in good shape, leveled, and following current standards?
(PROWAG, 2024*)

() YES

(X) NO

OBS: Old ramps don't follow new standards.



SCORE: 7.0

*<https://www.access-board.gov/prowag/>

SCORE FINAL:

6.0

SCORE RESULTS

0-4 points: Not Walkable Route

5-7 points: Poor conditions and risky route for pedestrians

8-11 points: Walkability okay but not ideal, higher risk for especial groups like the elderly and the kids

12-14 points: Walkability is good but there's room for improvement, especially for safety (look for "no's" on crosswalks, A.D.A. compliance, and traffic)

15-18 points: This is a pedestrian-friendly route